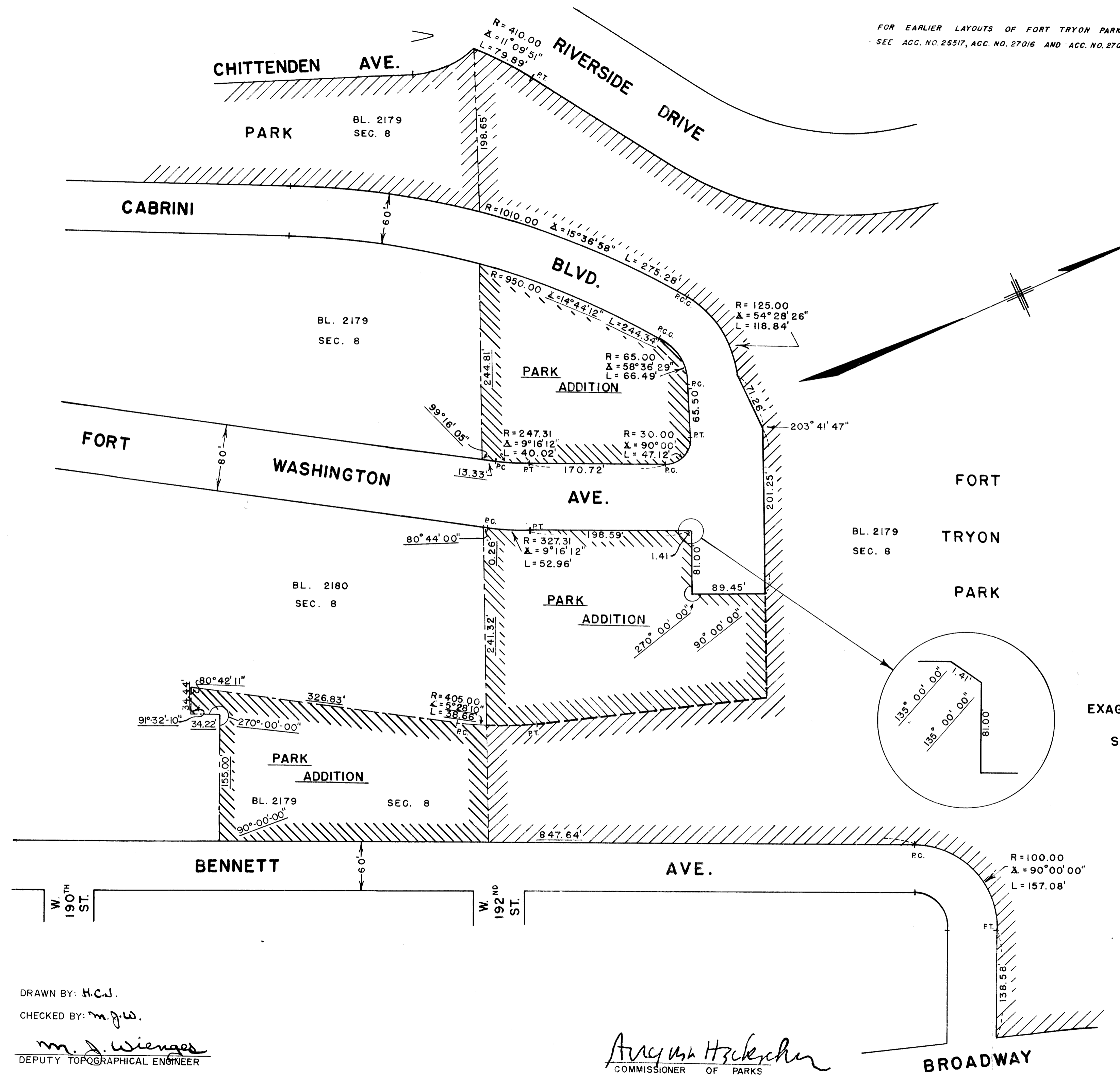


FOR EARLIER LAYOUTS OF FORT TRYON PARK
SEE ACC. NO. 25517, ACC. NO. 27016 AND ACC. NO. 27003

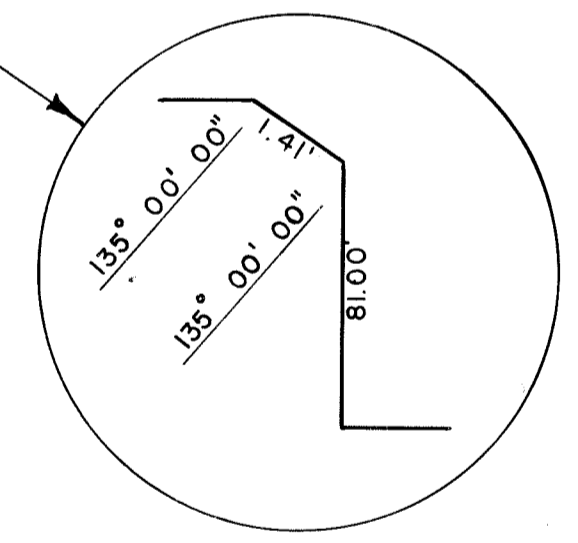


- NOTES**
- INDICATES STREET LINE HERETOFORE ESTABLISHED AND HEREBY RETAINED.
 - - - INDICATES PROPERTY SUBDIVISION LINE.
 - INDICATES LINES HERETOFORE ESTABLISHED AND HEREBY ELIMINATED.
 - 170.72' INDICATES DIMENSION HERETOFORE ESTABLISHED AND HEREBY RETAINED.
 - 326.83' INDICATES DIMENSION HEREBY ESTABLISHED.
 - PARK INDICATES PARK HERETOFORE ESTABLISHED AND HEREBY RETAINED.
 - PARK ADDITION INDICATES PARK ADDITION HEREBY ESTABLISHED.

I, LOIS Mc DANIEL, SECRETARY OF THE CITY PLANNING COMMISSION, DO HEREBY CERTIFY THAT THIS MAP IS ONE OF EIGHT SIMILAR MAPS APPROVED BY THE CITY PLANNING COMMISSION ON THE 11th. DAY OF FEBRUARY, 1981 (Calendar No. 28), AND SUBSEQUENTLY APPROVED BY THE BOARD OF ESTIMATE ON MARCH 12, 1981, (Cal. No.13), AND THAT THESE MAPS WERE FILED ON THE DATE OF THIS CERTIFICATION AND WILL TAKE EFFECT ON THE FOLLOWING DAY.

DATE: NEW YORK February 3, 1993

Lois McDaniel
SECRETARY, CITY PLANNING COMMISSION



CITY OF NEW YORK
OFFICE OF THE PRESIDENT BOROUGHS OF MANHATTAN
TOPOGRAPHICAL BUREAU

MAP SHOWING A CHANGE IN THE CITY MAP
BY LAYING OUT
THREE PARK ADDITIONS
TO
FORT TRYON PARK

ON CABRINI BLVD, FORT WASHINGTON AVE. AND BENNETT AVE.
IN THE VICINITY OF WEST 192ND STREET

DATED: OCT. 15, 1970 SCALE: 1" = 80'

Joseph A. ...
PRESIDENT, BOROUGHS OF MANHATTAN

Felipe Sanchez PE.
TOPOGRAPHICAL ENGINEER

DRAWN BY: H.C.W.
CHECKED BY: m.g.w.
m. J. Wienges
DEPUTY TOPOGRAPHICAL ENGINEER

Angus H. ...
COMMISSIONER OF PARKS