

AVE.

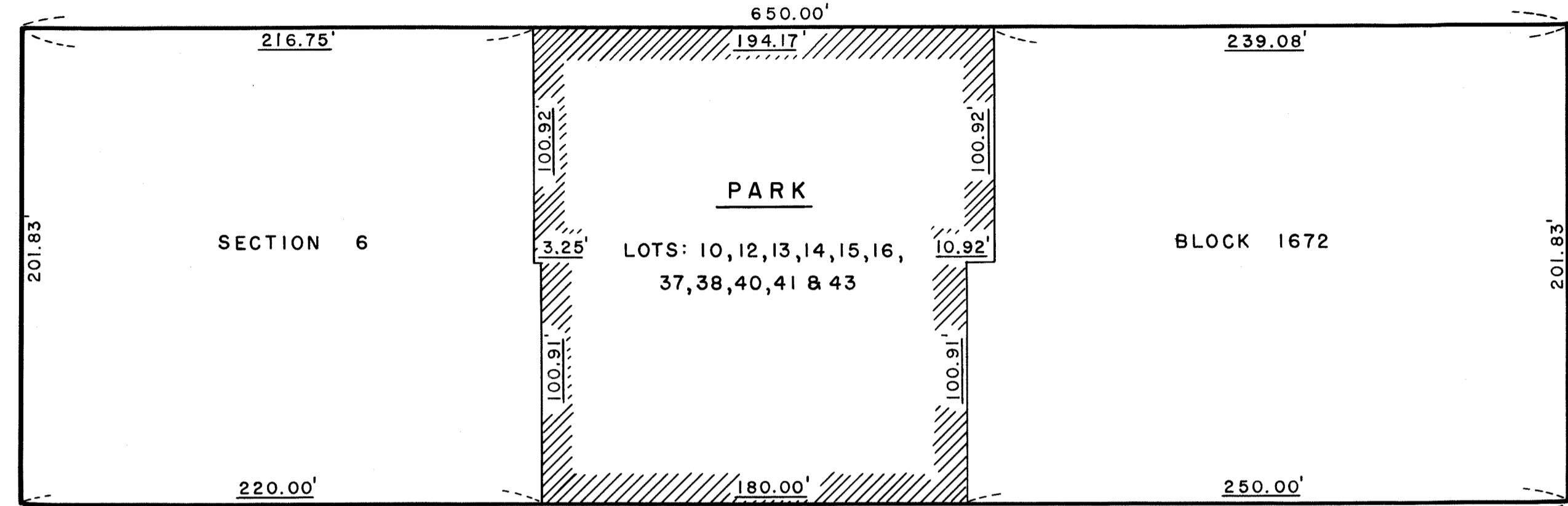
100'

SECTION 6

60'

E. 101ST

ST.



AVE.

100'


BLOCK 1672

60'

E. 100TH

ST.

NOTES

- INDICATES STREET LINE HERETOFORE ESTABLISHED AND HEREBY RETAINED.
- 650.00' INDICATES DIMENSION HERETOFORE ESTABLISHED AND HEREBY RETAINED.
- 250.00' INDICATES DIMENSION HEREBY ESTABLISHED.
-  INDICATES PARK HEREBY ESTABLISHED.

I, RUTH W. WHALEY, SECRETARY OF THE BOARD OF ESTIMATE OF THE CITY OF NEW YORK DO HEREBY CERTIFY THAT THIS MAP IS ONE OF EIGHT SIMILAR MAPS ADOPTED BY THE SAID BOARD OF ESTIMATE ON THE 14TH SEPT. 1968 CAL. 257

DATED: NEW YORK
Ruth W. Whaley
 SECRETARY, BOARD OF ESTIMATE
 N.Y.

August H. H. H. H.
 COMMISSIONER OF PARKS

DRAWN BY: E.F.M.
 CHECKED BY: m.j.w.
m. J. Winger
 DEPUTY TOPOGRAPHICAL ENGINEER

CITY OF NEW YORK
 OFFICE OF THE PRESIDENT BOROUGH OF MANHATTAN
 TOPOGRAPHICAL BUREAU

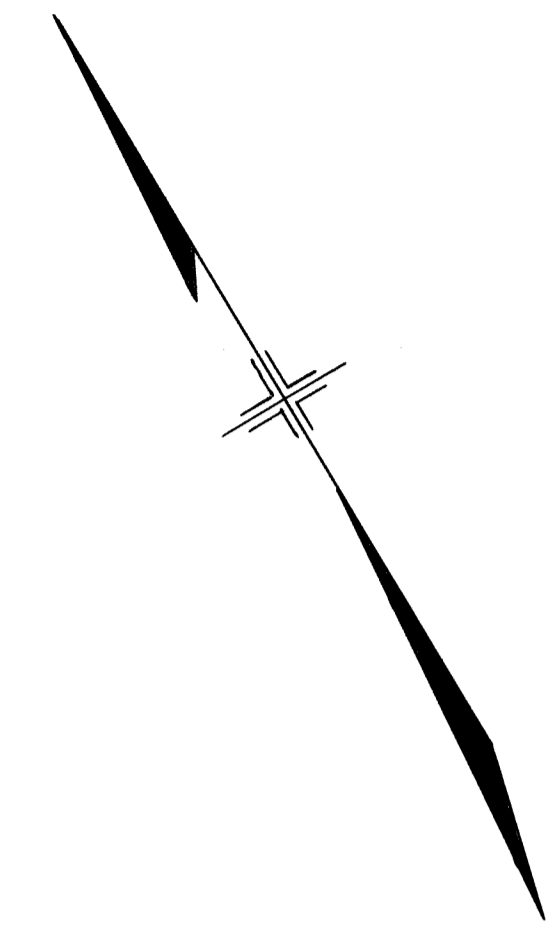
MAP SHOWING A CHANGE IN THE CITY MAP
 BY LAYING OUT
A PARK
 IN THE AREA BOUNDED BY
 EAST 100TH STREET, SECOND AVENUE,
 EAST 101ST STREET AND FIRST AVENUE

DATED: AUG. 21, 1968. SCALE: 1" = 50'

Joseph P. ...
 PRESIDENT, BOROUGH OF MANHATTAN

Felipe Sanchez P.E.
 TOPOGRAPHICAL ENGINEER

ACC. NO. 29947



Erave 20

11/7/1968
John Faybit