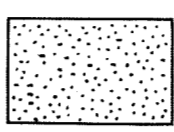
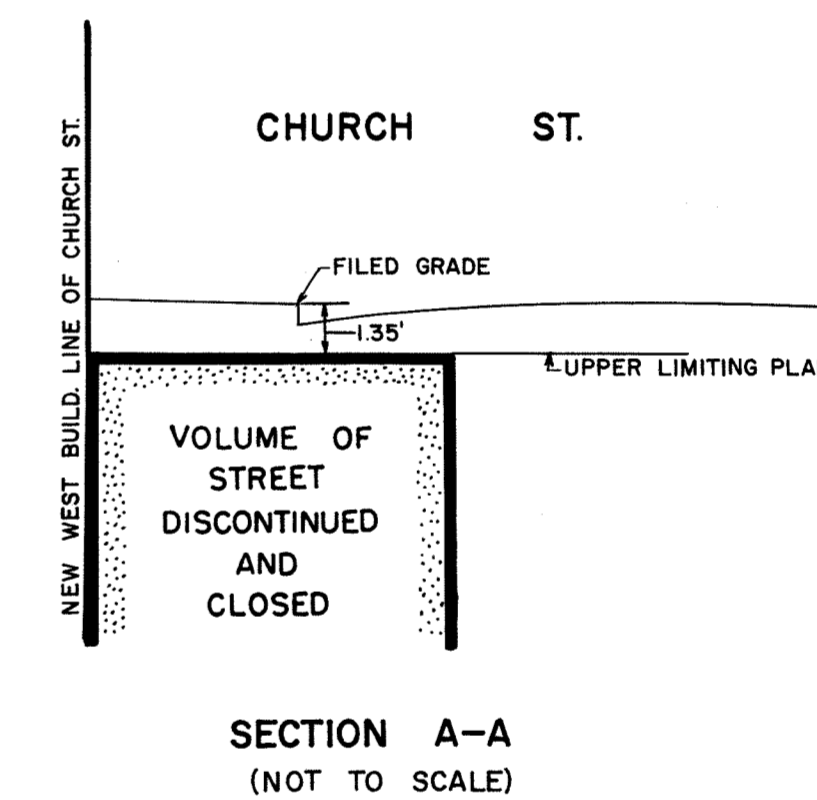
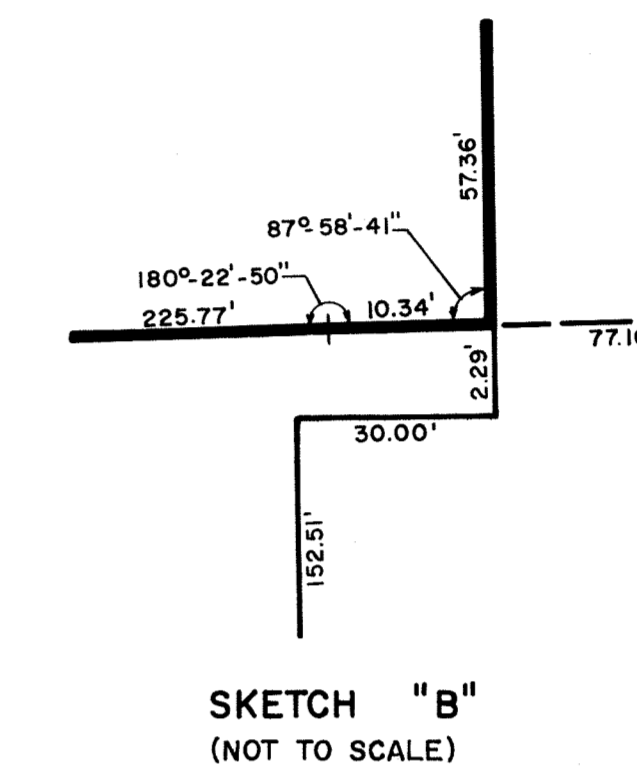
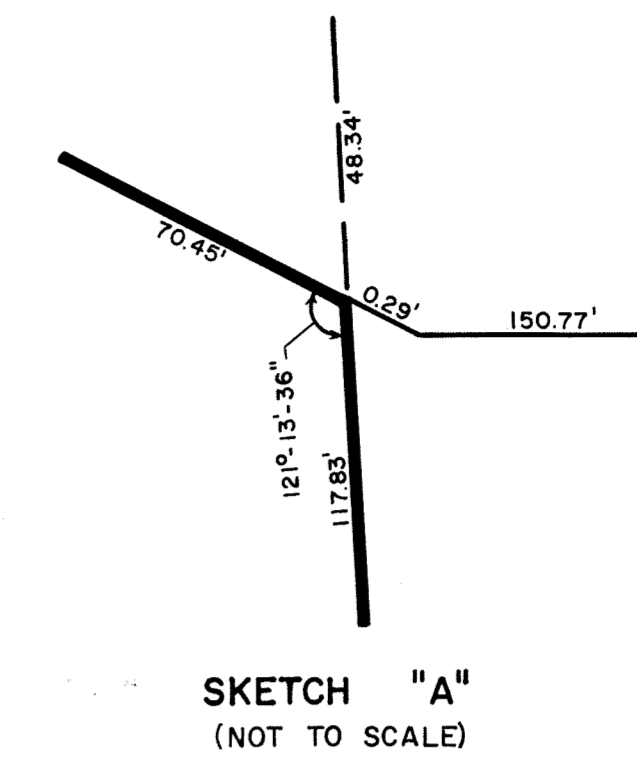


NOTES:

STREETS TO BE DISCONTINUED AND CLOSED INDICATED IN HEAVY BLACK LINES.

 INDICATES STREET VOLUME TO BE DISCONTINUED AND CLOSED BELOW A PLANE 1.35 FEET BELOW CURB GRADE.



STREETS IN THIS AREA CLOSED BY ACC. NO. 29911,
APPROVED BY THE BOARD OF ESTIMATE ON JUNE 22, 1967,
CAL. NO. 2.

RUTH W. WHALEY, SECRETARY OF THE
BOARD OF ESTIMATE OF THE CITY OF NEW YORK
HEREBY CERTIFY THAT THIS MAP IS ONE OF
SEVEN SIMILAR MAPS ADOPTED BY THE SAID BOARD
ESTIMATE ON THE 19TH DEC. 1966 CAL. NO. 6

NEW YORK
JUN 22 1967
Ruth W. Whaley
SECRETARY, BOARD OF ESTIMATE

BY: G.S.
D BY: *m. g. d.*
m. wilson
TOPOGRAPHICAL ENGINEER

CITY OF NEW YORK
OFFICE OF THE PRESIDENT, BOROUGH OF MANHATTAN
TOPOGRAPHICAL BUREAU

MAP SHOWING A CHANGE IN THE STREET SYSTEM
BY DISCONTINUING AND CLOSING THE REMAINING
VOLUMES OF STREETS BELOW DESIGNATED UPPER LIMITING PLANES
AND
STREETS WITH NO UPPER OR LOWER LIMITS
IN THE AREA GENERALLY BOUNDED BY
WEST STREET, BARCLAY STREET,
CHURCH STREET AND LIBERTY STREET.

DATED: AUG. 12, 1968

Leonard T. Cohen
ACTING PRESIDENT, BOROUGH OF MANHATTAN

Felipe Sanchez P.E.
TOPOGRAPHICAL ENGINEER

FILED IN THE OFFICE OF THE PRES. BORO. MAN.
6/24/1969
F. Faylik

ACC. NO. 29937

Drawn 55 D