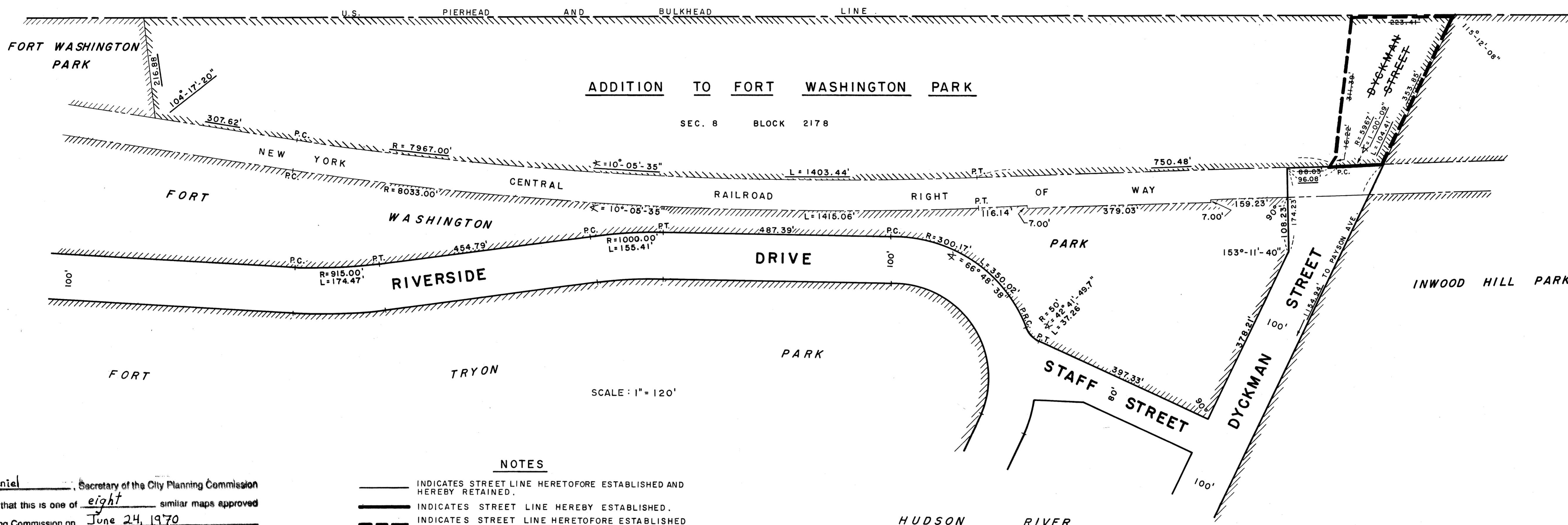
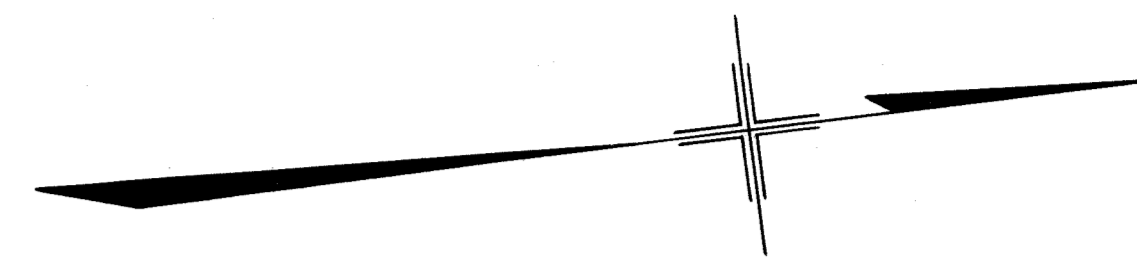


H U D S O N R I V E R



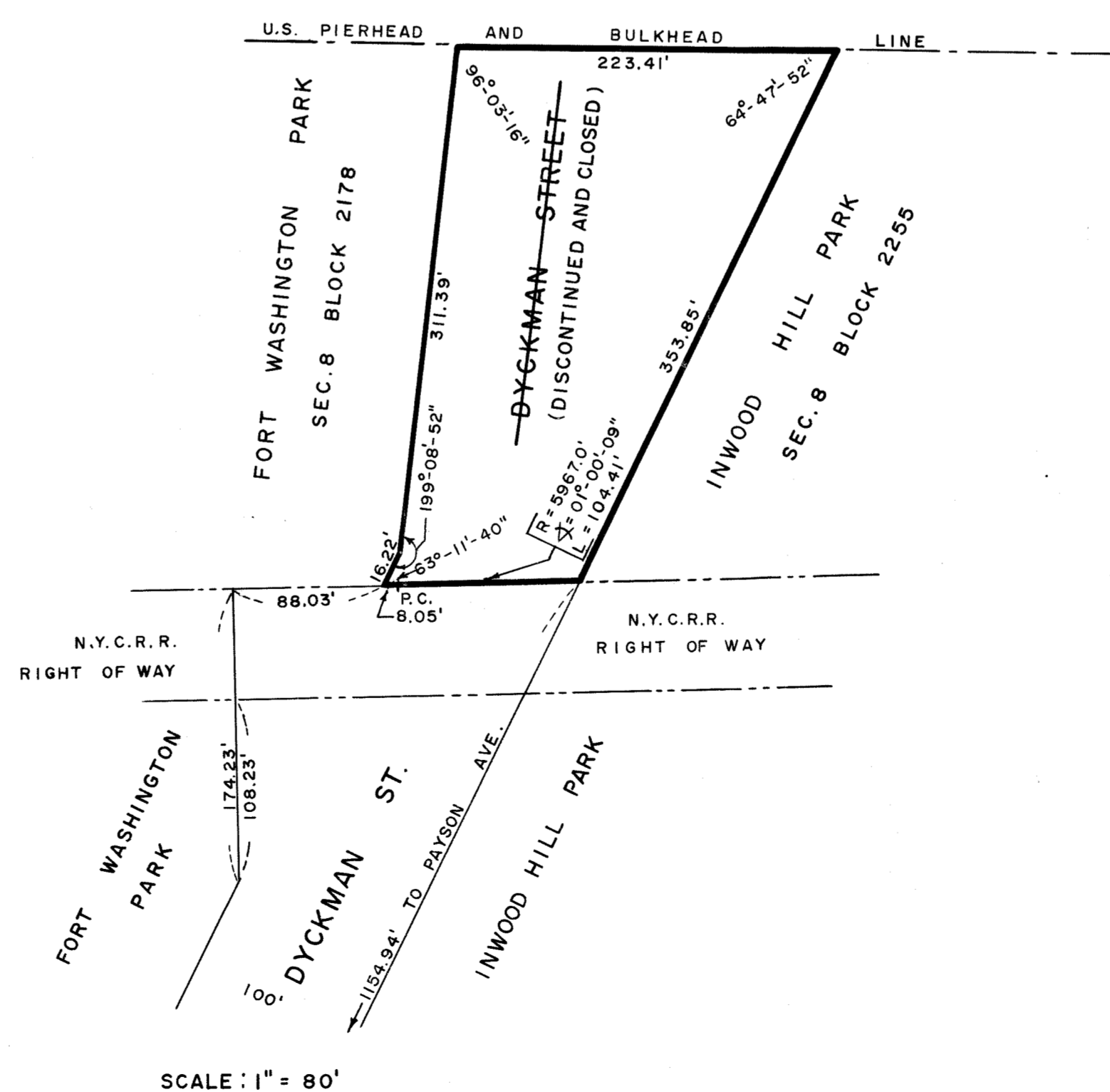
NOTES

- INDICATES STREET LINE HERETOFORE ESTABLISHED AND HEREBY RETAINED.
- INDICATES STREET LINE HEREBY ESTABLISHED.
- - - INDICATES STREET LINE HERETOFORE ESTABLISHED AND HEREBY ELIMINATED.
- 485.27 INDICATES DIMENSION HERETOFORE ESTABLISHED AND HEREBY RETAINED.
- 246.18 INDICATES DIMENSION HEREBY ESTABLISHED.
- ~~235.90~~ INDICATES DIMENSION HERETOFORE ESTABLISHED AND HEREBY ELIMINATED.
- [PARK] INDICATES PARK HERETOFORE ESTABLISHED AND HEREBY RETAINED.
- [PARK ADDITION] INDICATES PARK ADDITION HEREBY ESTABLISHED.
- [DISCONTINUED AND CLOSED] INDICATES STREET AREA TO BE DISCONTINUED AND CLOSED.

Lois McDaniel, Secretary of the City Planning Commission do hereby certify that this is one of eight similar maps approved by the City Planning Commission on June 24, 1970 (Calendar No. 28), and subsequently adopted by the Board of Estimate on May 24, 1990 (Calendar No. 3), and that these maps were filed on the date of this certification and will take effect on the following day.

Date New York: December 3, 1992
 Lois McDaniel
 Secretary, City Planning Commission

REFERENCES: ACC. NO'S. 21761, 25716, 25719, 25862, 26072, 26495



CITY OF NEW YORK
 OFFICE OF THE PRESIDENT BOROUGH OF MANHATTAN
 TOPOGRAPHICAL BUREAU
 MAP SHOWING A CHANGE IN THE CITY MAP
 BY LAYING OUT A
PARK ADDITION
 TO FORT WASHINGTON PARK
 ALONG THE HUDSON RIVER
 BETWEEN THE NORTHERLY TERMINUS OF FORT WASHINGTON PARK
 AND THE NORTHERLY LINE OF DYCKMAN STREET,
 BY ELIMINATING THE LINES OF
DYCKMAN STREET
 BETWEEN THE HUDSON RIVER AND THE
 N. Y. CENTRAL RAILROAD RIGHT OF WAY
 AND BY DISCONTINUING AND CLOSING
DYCKMAN STREET
 BETWEEN THE HUDSON RIVER AND THE
 N. Y. CENTRAL RAILROAD RIGHT OF WAY

DATED: APRIL 6, 1970 SCALE: AS SHOWN

DRAWN BY: E.F.M.
 CHECKED BY: M.J.W.
 M.J. Wieman
 DEPUTY TOPOGRAPHICAL ENGINEER

APPROVED FOR DEPT. OF PARKS
 Murray Haskin
 COMMISSIONER OF PARKS

[Signature]
 PRESIDENT, BOROUGH OF MANHATTAN
 TOPOGRAPHICAL ENGINEER

ACC. NO. 29924