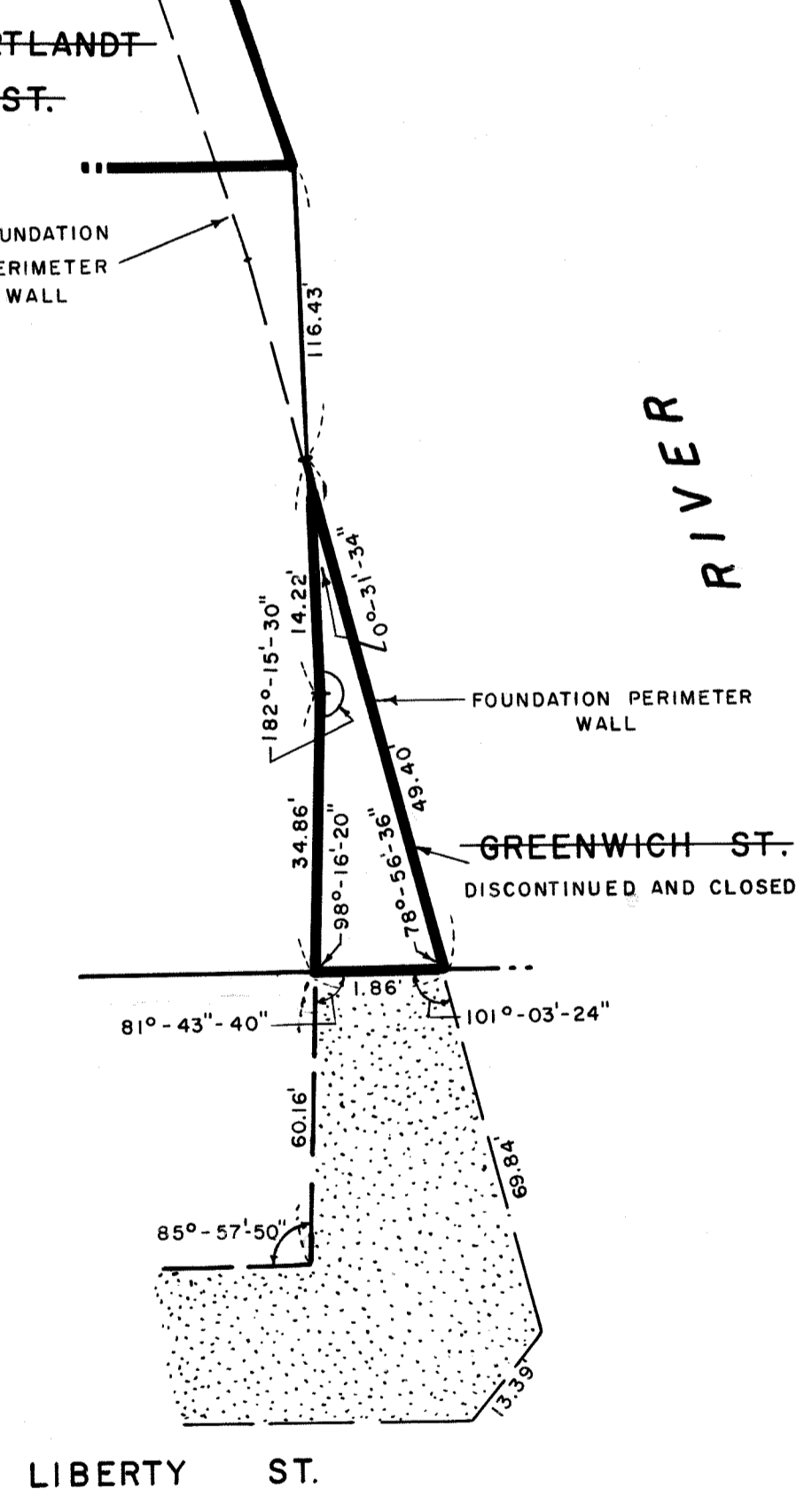


- NOTES:**
- STREETS TO BE DISCONTINUED AND CLOSED ENCLOSED IN HEAVY BLACK LINES .
 - ▨ INDICATES STREET VOLUME TO BE DISCONTINUED AND CLOSED BELOW A PLANE 1.35 FEET BELOW CURB GRADE.
 - ▭ AREA IN PINK BORDER, DELINEATING VOLUMES OF STREETS TO BE DISCONTINUED AND CLOSED, EXCLUDED FROM ADOPTION BY THE CITY PLANNING COMMISSION ON MAY 16, 1967 (CAL. NO. 2) AND BY THE BOARD OF ESTIMATE ON JUNE 22, 1967 CAL. # 2 AT 10 A.M. MEETING.



EXAGGERATED SKETCH "A"

BERNARD J. GINS
 SECRETARY OF THE BOARD OF ESTIMATE OF THE CITY OF NEW YORK
 DO HEREBY CERTIFY THAT THIS MAP IS ONE OF SEVEN SIMILAR MAPS ADOPTED BY THE SAID BOARD OF ESTIMATE ON THE 22ND JUNE 1967 CAL. # 2 AT 10 A.M. MEETING.
 DATED: NEW YORK

Thomas J. Shea
 ACTING SECRETARY, BOARD OF ESTIMATE

DRAWN BY: L.F.M.
 CHECKED BY: M.J.W.
Abraham J. Wisniewski
 TOPOGRAPHICAL ENGINEER

CITY OF NEW YORK
 OFFICE OF THE PRESIDENT, BOROUGH OF MANHATTAN
 TOPOGRAPHICAL BUREAU

MAP SHOWING A CHANGE IN THE STREET SYSTEM
 BY DISCONTINUING AND CLOSING
 VOLUMES OF STREETS BELOW DESIGNATED UPPER LIMITING PLANES
 AND
 STREETS WITH NO UPPER OR LOWER LIMITS
 IN THE AREA BOUNDED BY
 LIBERTY STREET, WEST STREET
 VESEY STREET AND GREENWICH STREET

DATED: FEB. 24, 1967

Joseph W. Sullivan
 PRESIDENT, BOROUGH OF MANHATTAN

Felipe Sanchez P.E.
 TOPOGRAPHICAL ENGINEER

SCALE: 1" = 60'

ACC. NO. 29911

FILED IN THE OFFICE OF THE PRES. BORO. M.M.
 9/8/67
 J. Fayler