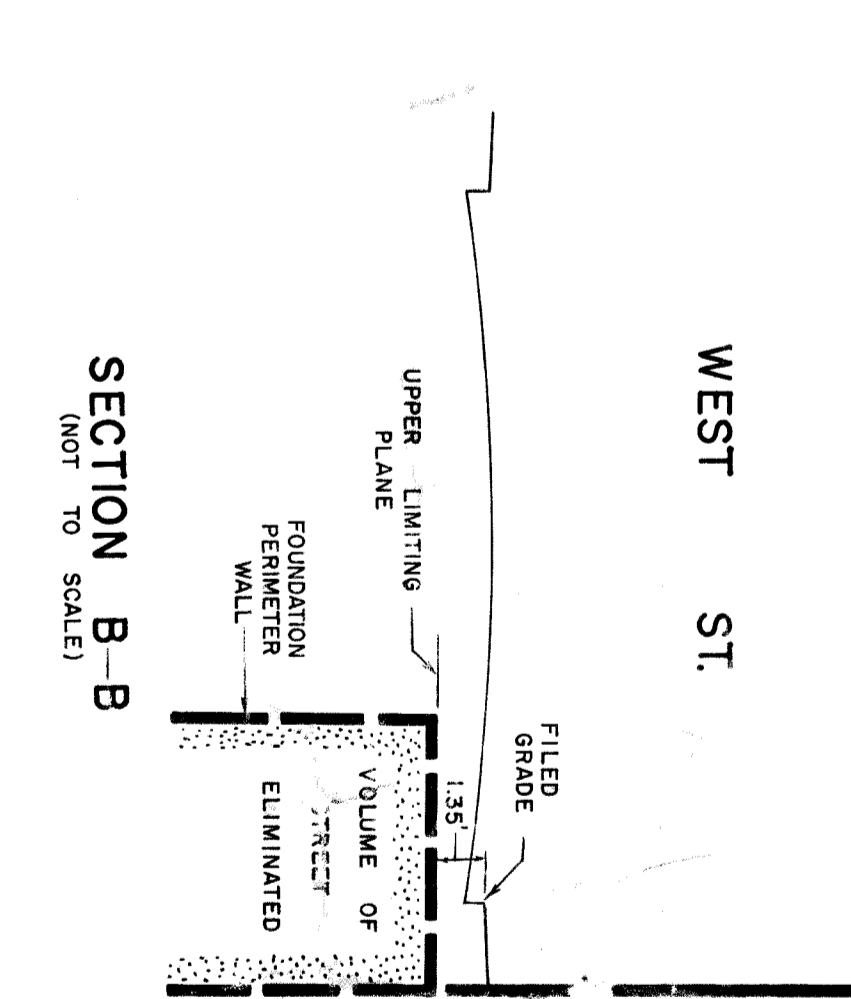
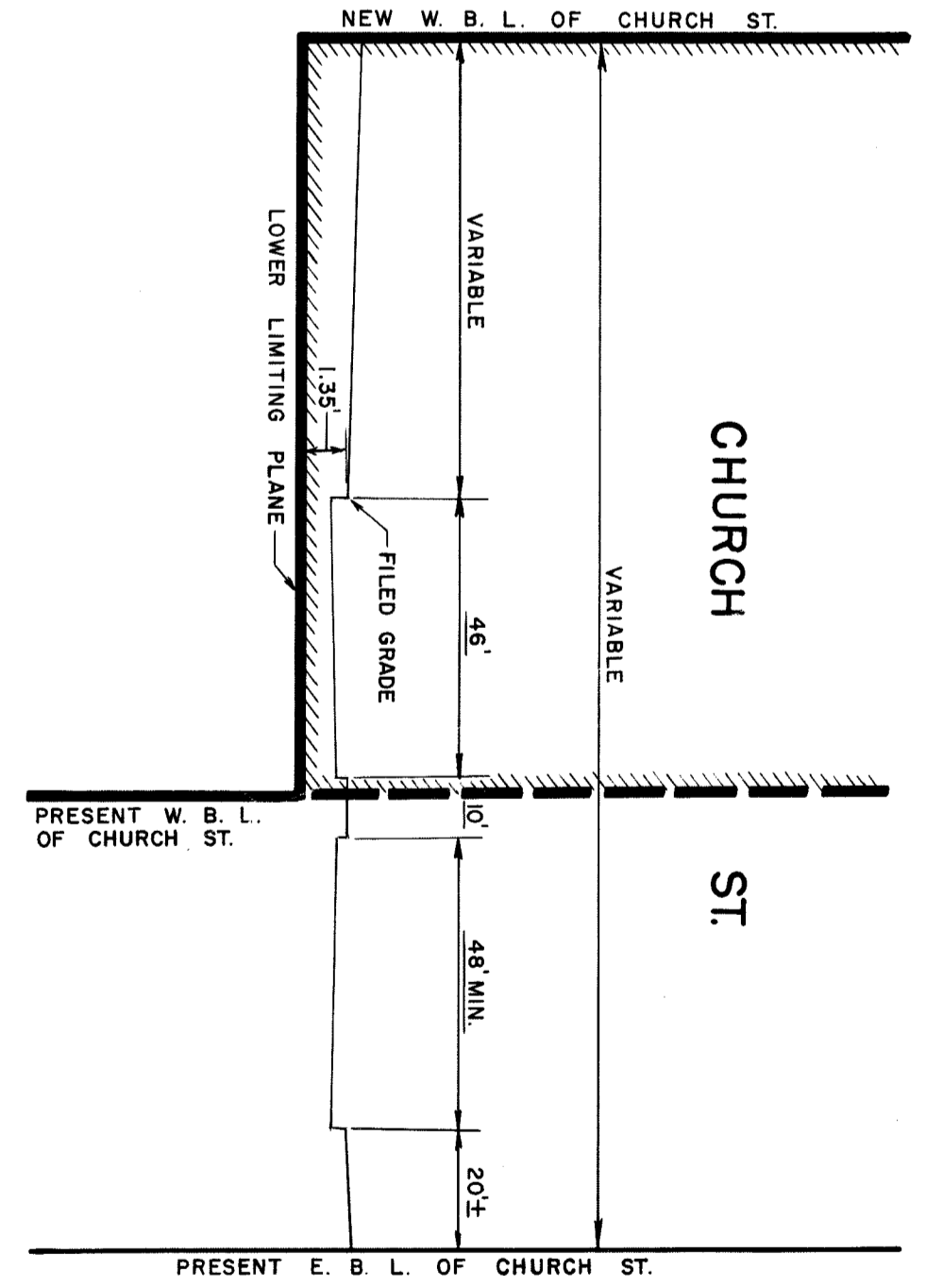
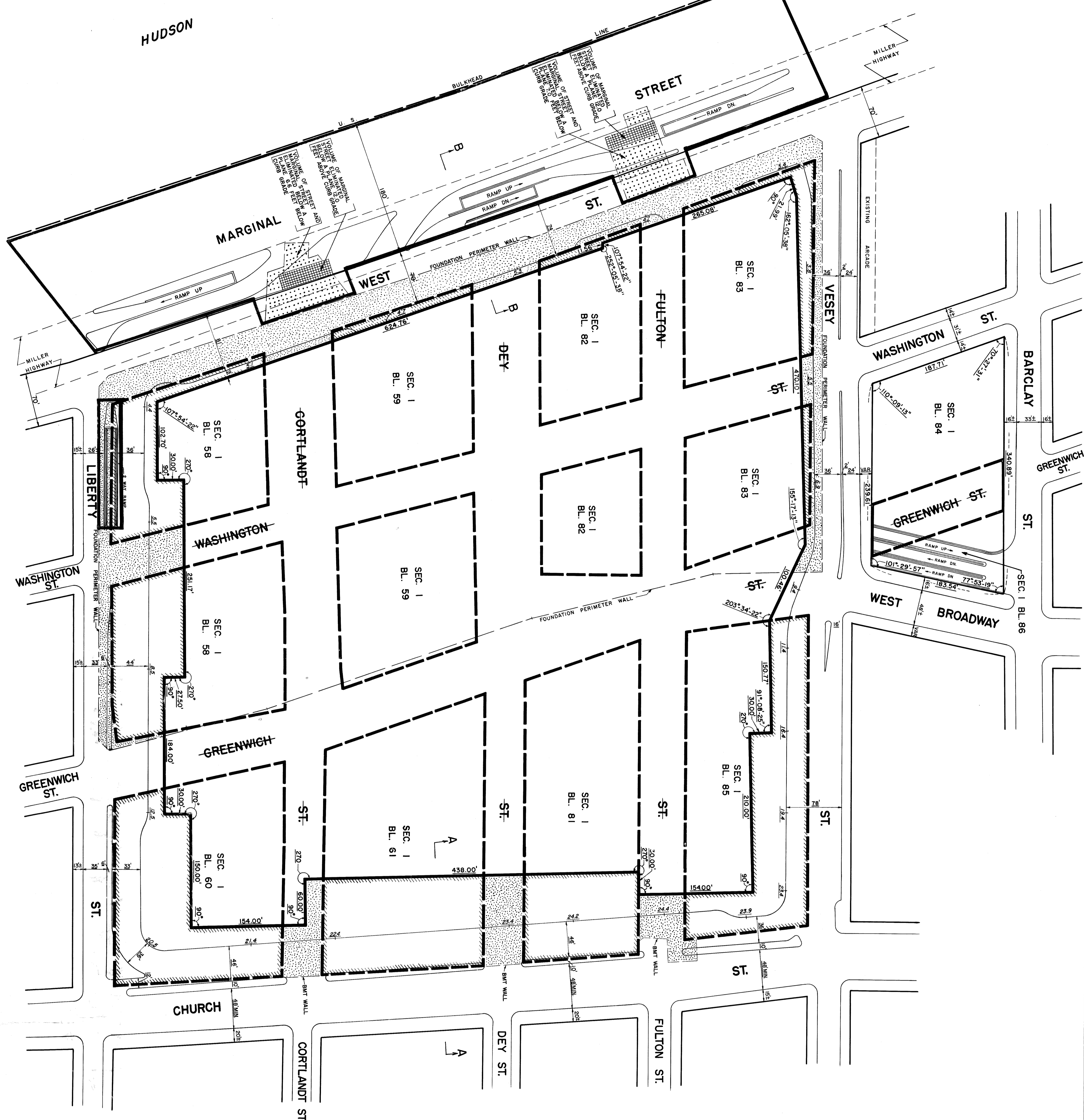


1. **Thomas J. Cline, Chairman**
 BOARD OF ESTIMATE OF THE CITY OF NEW YORK
 SEVEN SIMILAR MAPS ADOPTED BY THE SAID BOARD
 OF ESTIMATE ON THE 24th DAY OF MAY, 1967 (CAL. NO. 1)
 DATED NEW YORK, N.Y. 5/24/67

James A. DeLoach, Secretary
 ADMINISTRATIVE BOARD OF ESTIMATE



- NOTES**
- INDICATES STREET LINE HERETOFORE ESTABLISHED AND HEREBY REMAINED.
 - INDICATES STREET LINE HEREBY ESTABLISHED.
 - INDICATES STREET LINE HERETOFORE ESTABLISHED AND HEREBY ELIMINATED.
 - INDICATES DIMENSION HERETOFORE ESTABLISHED AND HEREBY REMAINED.
 - INDICATES DIMENSION HEREBY ESTABLISHED.
 - INDICATES DIMENSION HERETOFORE ESTABLISHED AND HEREBY ELIMINATED.
 - INDICATES ELEVATION HEREBY ESTABLISHED.
 - ELEVATIONS ARE FOR TOP OF CURB AND ARE REFERRED TO THE DATUM OF THE TOPOGRAPHICAL BUREAU, BOROUGH OF MANHATTAN, 1955 FEET ABOVE THE U.S.C. & G.S.
 - INDICATES SIDEWALK AND ROADWAY TREATMENT HEREBY REMAINED OR HERETOFORE ESTABLISHED AND HEREBY ELIMINATED.
 - INDICATES SIDEWALK AND ROADWAY TREATMENT DIMENSION HERETOFORE ESTABLISHED AND HEREBY REMAINED.
 - INDICATES SIDEWALK AND ROADWAY TREATMENT DIMENSION HEREBY ESTABLISHED.
 - INDICATES STREET WIDENING ABOVE A PLANE 1.35 FEET BELOW CURB GRADE.
 - AREA IN PINK BORDER EXCLUDED FROM ADOPTION BY THE CITY PLANNING COMMISSION ON MAY 16, 1967 (CAL. NO. 1) AND A "M" MEETING ON JUNE 23, 1967 (CAL. NO. 1)

CITY OF NEW YORK
 OFFICE OF THE PRESIDENT
 TOPOGRAPHICAL BUREAU

MAP SHOWING A CHANGE IN THE STREET SYSTEM
 BY ELIMINATING STREET LINES,
 BY WIDENING PERIPHERAL STREETS,
 ABOVE DESIGNATED LOWER LIMITING PLANES,
 BY ELIMINATING VOLUMES OF PUBLIC STREETS,
 BELOW DESIGNATED UPPER LIMITING PLANES,
 AND BY ESTABLISHING GRADES AND ROADWAY TREATMENT
 IN THE AREA GENERALLY BOUNDED BY
**WEST STREET, BARCLAY STREET, CHURCH STREET
 AND LIBERTY STREET.**

DATE: FEB. 23, 1967

James A. DeLoach, Secretary
 TOPOGRAPHICAL ENGINEER

ACC. NO. 23910

9/18/67
 J. DeLoach