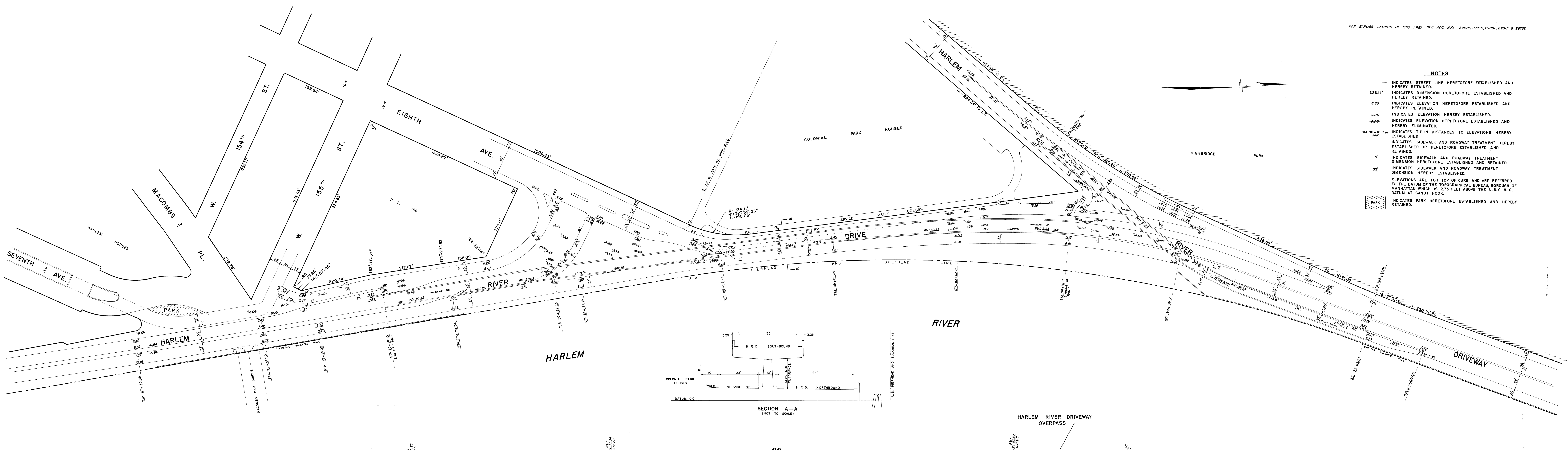
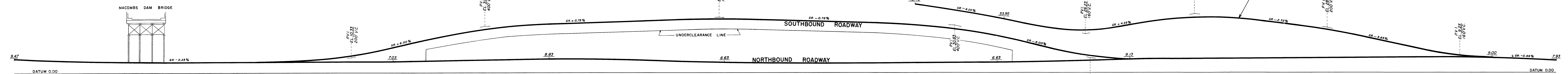
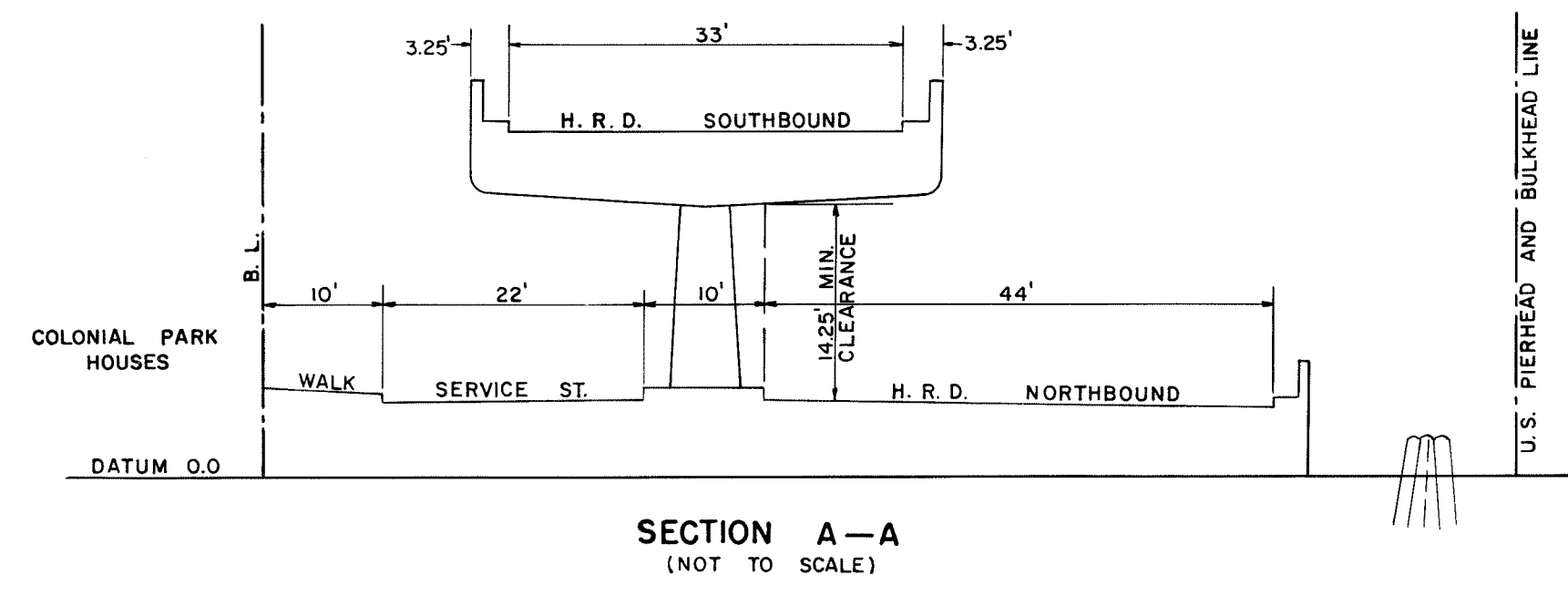


FOR EARLIER LAYOUTS IN THIS AREA SEE ACC. NO'S 29374, 29216, 29091, 29017 & 28752



- NOTES**
- INDICATES STREET LINE HERETOFORE ESTABLISHED AND HEREBY RETAINED.
 - 226.11' INDICATES DIMENSION HERETOFORE ESTABLISHED AND HEREBY RETAINED.
 - 6.65' INDICATES ELEVATION HERETOFORE ESTABLISHED AND HEREBY RETAINED.
 - 3.00' INDICATES ELEVATION HEREBY ESTABLISHED.
 - INDICATES ELEVATION HERETOFORE ESTABLISHED AND HEREBY ELIMINATED.
 - INDICATES TIE-IN DISTANCES TO ELEVATIONS HEREBY ESTABLISHED.
 - STA 98+10.17 INDICATES SIDEWALK AND ROADWAY TREATMENT HEREBY ESTABLISHED OR HERETOFORE ESTABLISHED AND RETAINED.
 - 15' INDICATES SIDEWALK AND ROADWAY TREATMENT DIMENSION HERETOFORE ESTABLISHED AND RETAINED.
 - 33' INDICATES SIDEWALK AND ROADWAY TREATMENT DIMENSION HEREBY ESTABLISHED.
 - ELEVATIONS ARE FOR TOP OF CURB AND ARE REFERRED TO THE DATUM OF THE TOPOGRAPHICAL BUREAU, BOROUGH OF MANHATTAN WHICH IS 2.75 FEET ABOVE THE U.S.C. & G. DATUM AT SANDY HOOK.
 - INDICATES PARK HERETOFORE ESTABLISHED AND HEREBY RETAINED.



PROFILE
 SCALES: HOR. 1" = 80'
 VERT. 1" = 20'

CITY OF NEW YORK
 OFFICE OF THE PRESIDENT, BOROUGH OF MANHATTAN
 TOPOGRAPHICAL BUREAU

MAP SHOWING A CHANGE IN THE STREET SYSTEM
 BY CHANGING THE GRADES AND ROADWAY TREATMENT
 OF THE
HARLEM RIVER DRIVE
 BETWEEN
155TH STREET AND THE HARLEM RIVER DRIVEWAY

DATED: MAY 14, 1965 SCALE: 1" = 80'

Christina Baker Matley
 PRESIDENT, BOROUGH OF MANHATTAN

P. Roach CONSULTING ENGINEER
John J. Conroy TOPOGRAPHICAL ENGINEER

ACC. NO. 29861

DRAWN BY: G.S.
 CHECKED BY: N.L.W.
N.L.W.
 DEPUTY TOPOGRAPHICAL ENGINEER

DATED: NEW YORK
Ruth W. Whaley
 SECRETARY, BOARD OF ESTIMATE

APPROVED FOR DEPT. OF HIGHWAYS
John T. Canoll
 COMMISSIONER OF HIGHWAYS