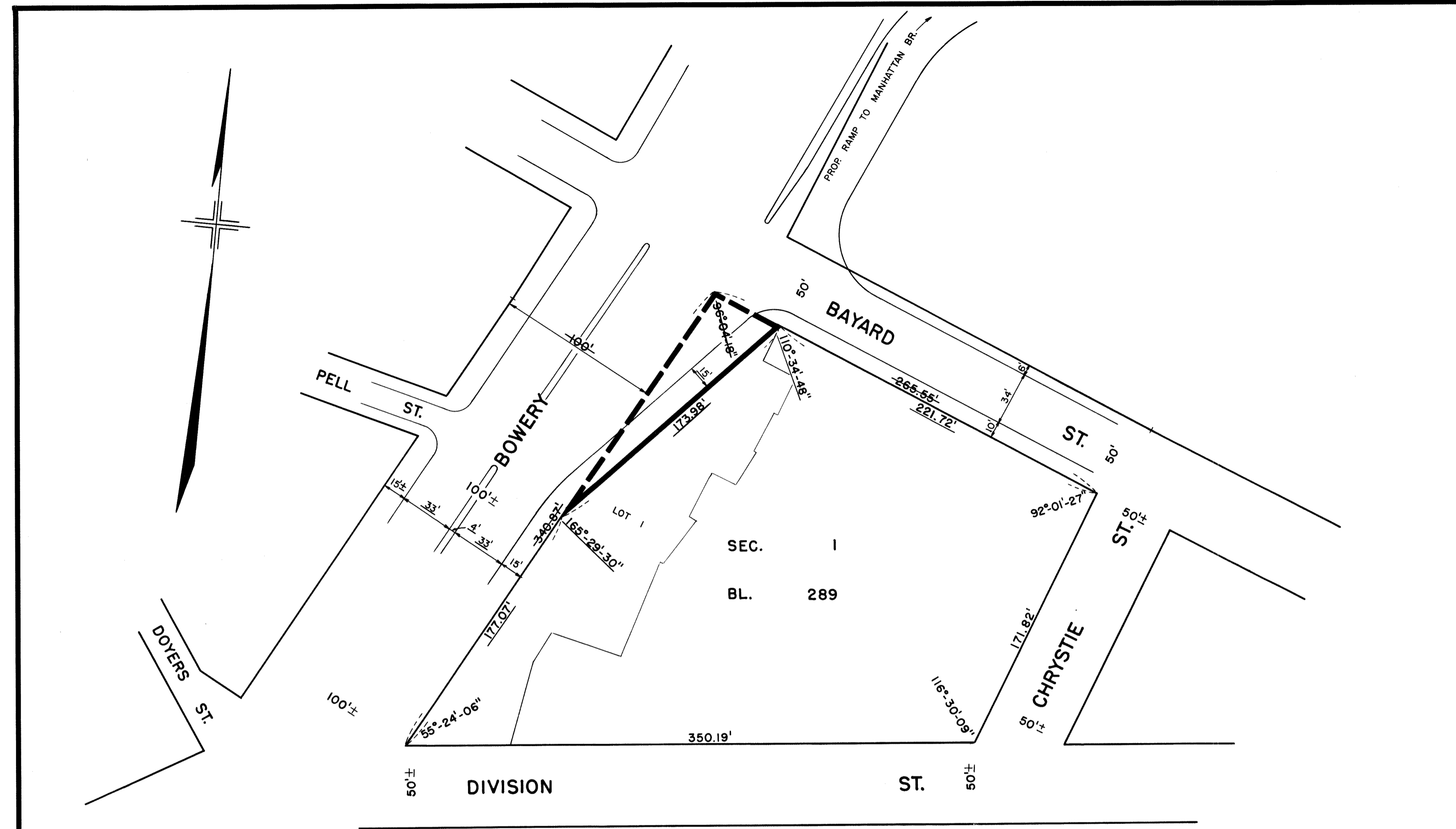


FOR EARLIER LAYOUTS IN THIS AREA
SEE ACC. NOS. 29416, 29382 & 29098



NOTES

- INDICATES STREET LINE HERETOFORE ESTABLISHED AND HEREBY RETAINED.
- INDICATES STREET LINE HEREBY ESTABLISHED.
- INDICATES STREET LINE HERETOFORE ESTABLISHED AND HEREBY ELIMINATED.
- 350.19' INDICATES DIMENSION HERETOFORE ESTABLISHED AND HEREBY RETAINED.
- 173.98' INDICATES DIMENSION HEREBY ESTABLISHED.
- 265.55' INDICATES DIMENSION HERETOFORE ESTABLISHED AND HEREBY ELIMINATED.
- INDICATES SIDEWALK AND ROADWAY TREATMENT HEREBY ESTABLISHED OR HERETOFORE ESTABLISHED AND RETAINED.
- 15' INDICATES SIDEWALK AND ROADWAY TREATMENT DIMENSION HERETOFORE ESTABLISHED AND RETAINED.
- 15' INDICATES SIDEWALK AND ROADWAY TREATMENT DIMENSION HEREBY ESTABLISHED.

I, RUTH W. WHALEY, SECRETARY OF THE BOARD OF ESTIMATE OF THE CITY OF NEW YORK DO HEREBY CERTIFY THAT THIS MAP IS ONE OF NINE SIMILAR MAPS ADOPTED BY THE SAID BOARD OF ESTIMATE ON THE 22ND July 1965 CAL. 203

SEP 23 1965
DATED: NEW YORK
Ruth W. Whaley
SECRETARY, BOARD OF ESTIMATE

CITY OF NEW YORK
OFFICE OF THE PRESIDENT BOROUGH OF MANHATTAN
TOPOGRAPHICAL BUREAU

MAP SHOWING A CHANGE IN THE STREET SYSTEM
BY WIDENING
BOWERY
ON ITS EASTERLY SIDE
BETWEEN
DIVISION STREET AND BAYARD STREET

DATED: MARCH 26, 1965 SCALE: 1" = 50'

Constance Baker Motley
PRESIDENT, BOROUGH OF MANHATTAN
F. Ruppel P.E. CONSULTING ENGINEER
Felipe Sanchez P.E. TOPOGRAPHICAL ENGINEER

DRAWN BY: G. S.
CHECKED BY: M. J. W.
m. J. Wienges
DEPUTY TOPOGRAPHICAL ENGINEER

APPROVED FOR DEPARTMENT OF HIGHWAYS
John T. Carroll
COMMISSIONER OF HIGHWAYS

FILED IN THE OFFICE OF THE PRES. BORO. MGR. 9/21/65
F. Foytik

(B)

ACC. NO. 29858