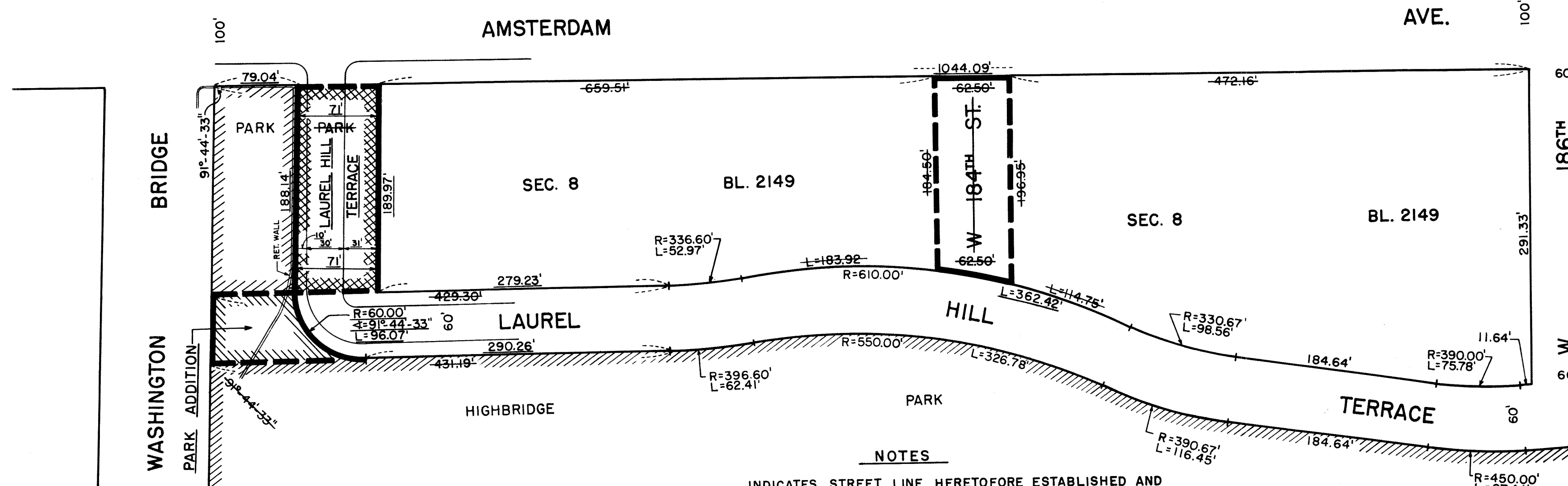


8⁰ W. 181ST ST. 8⁰ W. 182ND ST. 8⁰ W. 183RD ST. 8⁰ W. 184TH ST. 8⁰ W. 185TH ST. 8⁰ W. 186TH ST.



NOTE—FOR EARLIER LAYOUTS IN THIS AREA
SEE ACC. NOS. 29395, 8337, 7390, 21627 & 6019

NOTES

- INDICATES STREET LINE HERETOFORE ESTABLISHED AND HEREBY RETAINED.
- INDICATES STREET LINE HEREBY ESTABLISHED.
- INDICATES STREET LINE HERETOFORE ESTABLISHED AND HEREBY ELIMINATED.
- 184.64' INDICATES DIMENSION HERETOFORE ESTABLISHED AND HEREBY RETAINED.
- 189.97' INDICATES DIMENSION HEREBY ESTABLISHED.
- 429.30' INDICATES DIMENSION HERETOFORE ESTABLISHED AND HEREBY ELIMINATED.
- INDICATES SIDEWALK AND ROADWAY TREATMENT HEREBY ESTABLISHED OR HERETOFORE ESTABLISHED AND RETAINED.
- 30' INDICATES SIDEWALK AND ROADWAY TREATMENT DIMENSION HEREBY ESTABLISHED.
- [PARK] INDICATES PARK HERETOFORE ESTABLISHED AND HEREBY RETAINED.
- [PARK ADDITION] INDICATES PARK ADDITION HEREBY ESTABLISHED.
- [PARK] INDICATES PARK HERETOFORE ESTABLISHED AND HEREBY ELIMINATED.

I, RUTH W. WHALEY, SECRETARY OF THE BOARD OF ESTIMATE OF THE CITY OF NEW YORK DO HEREBY CERTIFY THAT THIS MAP IS ONE OF TEN SIMILAR MAPS ADOPTED BY THE SAID BOARD OF ESTIMATE ON THE 14TH APRIL 1966 CAL # 10

DATED: NEW YORK MAY 26 1966
Ruth W. Whaley
SECRETARY, BOARD OF ESTIMATE

DRAWN BY: G.S.
CHECKED BY: M.J.W.

m. j. wienges
DEPUTY TOPOGRAPHICAL ENGINEER

APPROVED FOR DEPT. OF HIGHWAYS
John T. Carroll
COMMISSIONER OF HIGHWAYS

APPROVED FOR DEPT. OF PARKS
Needold Morris
COMMISSIONER OF PARKS

CITY OF NEW YORK
OFFICE OF THE PRESIDENT BOROUGH OF MANHATTAN
TOPOGRAPHICAL BUREAU

MAP SHOWING A CHANGE IN THE STREET SYSTEM
BY ELIMINATING THE LINES OF
WEST 184TH STREET,
AND BY LAYING OUT AN EXTENSION OF
LAUREL HILL TERRACE
BETWEEN LAUREL HILL TERRACE AND AMSTERDAM AVENUE;
BY LAYING OUT A PARK ADDITION,
AND BY ELIMINATING A PORTION OF A PARK
ON THE NORTH SIDE OF THE WASHINGTON BRIDGE
BETWEEN LAUREL HILL TERRACE AND AMSTERDAM AVENUE.

DATED: MARCH 7, 1965 SCALE: 1" = 80'

Constance Baker Motley
PRESIDENT, BOROUGH OF MANHATTAN
P. Lizack R.E. *Felice Sanchez* R.E.
CONSULTING ENGINEER TOPOGRAPHICAL ENGINEER

ACC. 29853

Drawer 20