

I, RUTH W. WHALEY, SECRETARY OF THE BOARD OF ESTIMATE OF THE CITY OF NEW YORK DO HEREBY CERTIFY THAT THIS MAP IS ONE OF TEN SIMILAR MAPS ADOPTED BY THE SAID BOARD OF ESTIMATE ON THE 25th NOV. 1966 CAL. 117

DATED: NEW YORK OCT 24 1966
Ruth W. Whaley
 SECRETARY, BOARD OF ESTIMATE

NOTES

- INDICATES STREET LINE HERETOFORE ESTABLISHED AND HEREBY RETAINED.
- INDICATES STREET LINE HEREBY ESTABLISHED.
- INDICATES STREET LINE HERETOFORE ESTABLISHED AND HEREBY ELIMINATED.
- 297.31' INDICATES DIMENSION HERETOFORE ESTABLISHED AND HEREBY RETAINED.
- 540.47' INDICATES DIMENSION HEREBY ESTABLISHED.
- 143.68' INDICATES DIMENSION HERETOFORE ESTABLISHED AND HEREBY ELIMINATED.
- 10.40 INDICATES ELEVATION HERETOFORE ESTABLISHED AND HEREBY RETAINED.
- 13.00 INDICATES ELEVATION HEREBY ESTABLISHED.
- 12.00 INDICATES ELEVATION HERETOFORE ESTABLISHED AND HEREBY ELIMINATED.
- 80.0' INDICATES TIE-IN DISTANCES TO ELEVATIONS HEREBY ESTABLISHED.
- INDICATES SIDEWALK AND ROADWAY TREATMENT HEREBY ESTABLISHED OR HERETOFORE ESTABLISHED AND RETAINED.
- 15' INDICATES SIDEWALK AND ROADWAY TREATMENT DIMENSION HERETOFORE ESTABLISHED AND RETAINED.
- 15' INDICATES SIDEWALK AND ROADWAY TREATMENT DIMENSION HEREBY ESTABLISHED.
- ELEVATIONS ARE FOR TOP OF CURB AND ARE REFERRED TO THE DATUM OF THE TOPOGRAPHICAL BUREAU, BOROUGH OF MANHATTAN, WHICH IS 2.75 FEET ABOVE THE U.S.C. & C. DATUM AT SANDY HOOK.
- INDICATES SEWER EASEMENT HEREBY ESTABLISHED.
- INDICATES SIDEWALK EASEMENT HEREBY ESTABLISHED.

CITY OF NEW YORK
 OFFICE OF THE PRESIDENT BOROUGH OF MANHATTAN
 TOPOGRAPHICAL BUREAU

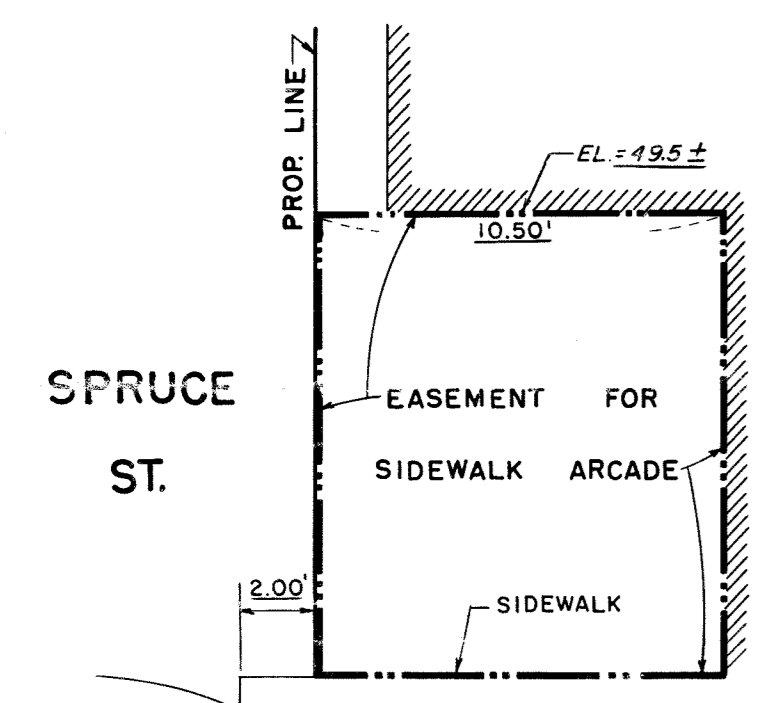
MAP SHOWING A CHANGE IN THE STREET SYSTEM BY ELIMINATING AND WIDENING STREET LINES, BY LAYING OUT A PEDESTRIAN STREET, AND BY ESTABLISHING GRADES AND ROADWAY TREATMENT, IN THE AREA GENERALLY BOUNDED BY FRANKFORT STREET, PEARL STREET, FULTON STREET, GOLD STREET, BEEKMAN STREET, AND NASSAU STREET; BY LAYING OUT THE LINES AND DIMENSIONS OF A PERMANENT AND PERPETUAL SIDEWALK EASEMENT, PART OF WHICH IS BELOW AN UPPER LIMITING PLANE IN SPRUCE STREET BETWEEN NASSAU STREET AND GOLD STREET; AND BY LAYING OUT THE LINES AND DIMENSIONS OF A SEWER EASEMENT IN THE BED OF FERRY STREET BETWEEN GOLD STREET AND PEARL STREET; ALL IN CONNECTION WITH THE BROOKLYN BRIDGE SOUTHWEST HOUSES

DATED: MARCH 14, 1966 SCALE: 1" = 60'

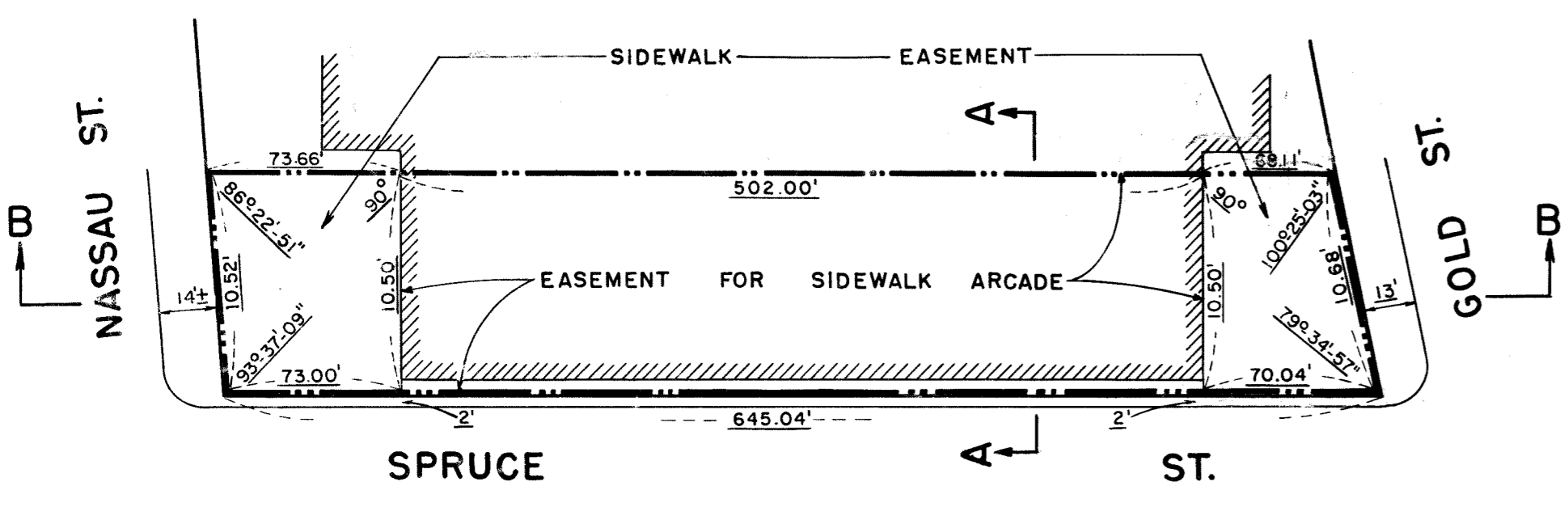
Constance Baker Motley
 PRESIDENT, BOROUGH OF MANHATTAN

Felipe Sanchez P.E.
 TOPOGRAPHICAL ENGINEER

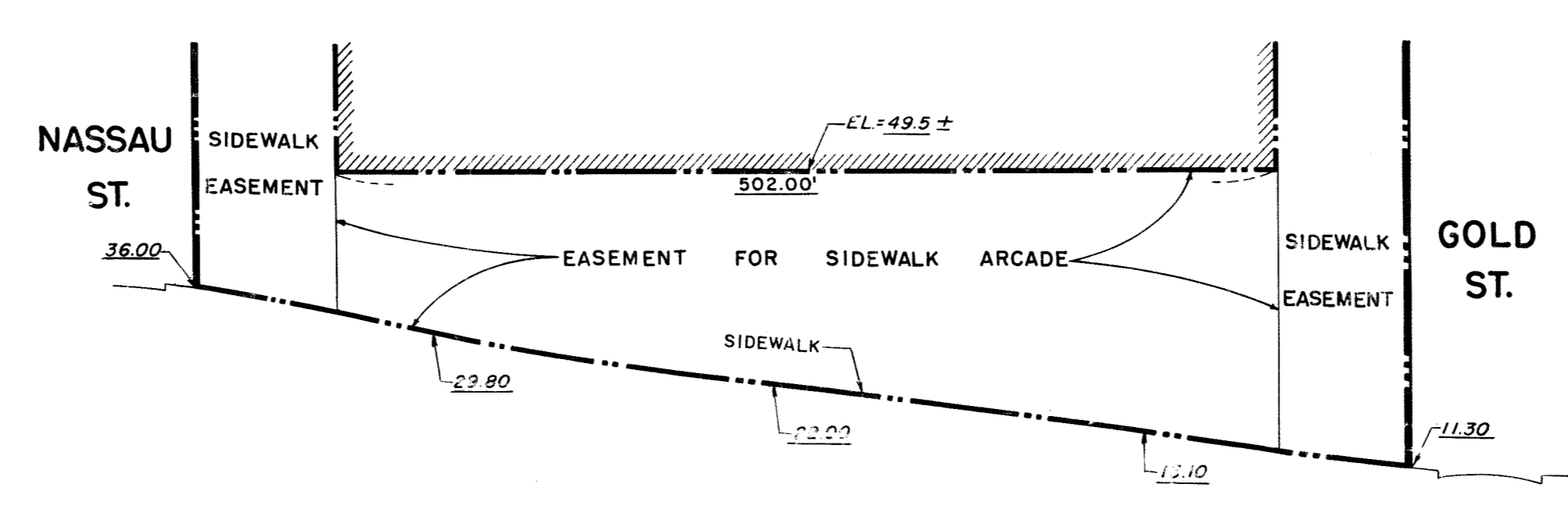
ACC. NO. 29832



SECTION A-A
 (NOT TO SCALE)



EXAGGERATED SKETCH
 (NOT TO SCALE)



SECTION B-B

SCALE HOR. - 1" = 80'
 VERT. - 1" = 20'

DRAWN BY: G.S.
 CHECKED BY: M.J.W.
M. J. Whaley
 DEPUTY TOPOGRAPHICAL ENGINEER

APPROVED FOR DEPARTMENT OF HIGHWAYS
James J. ...
 COMMISSIONER OF HIGHWAYS

DRAWER 40

10/25/66 J. J. ...