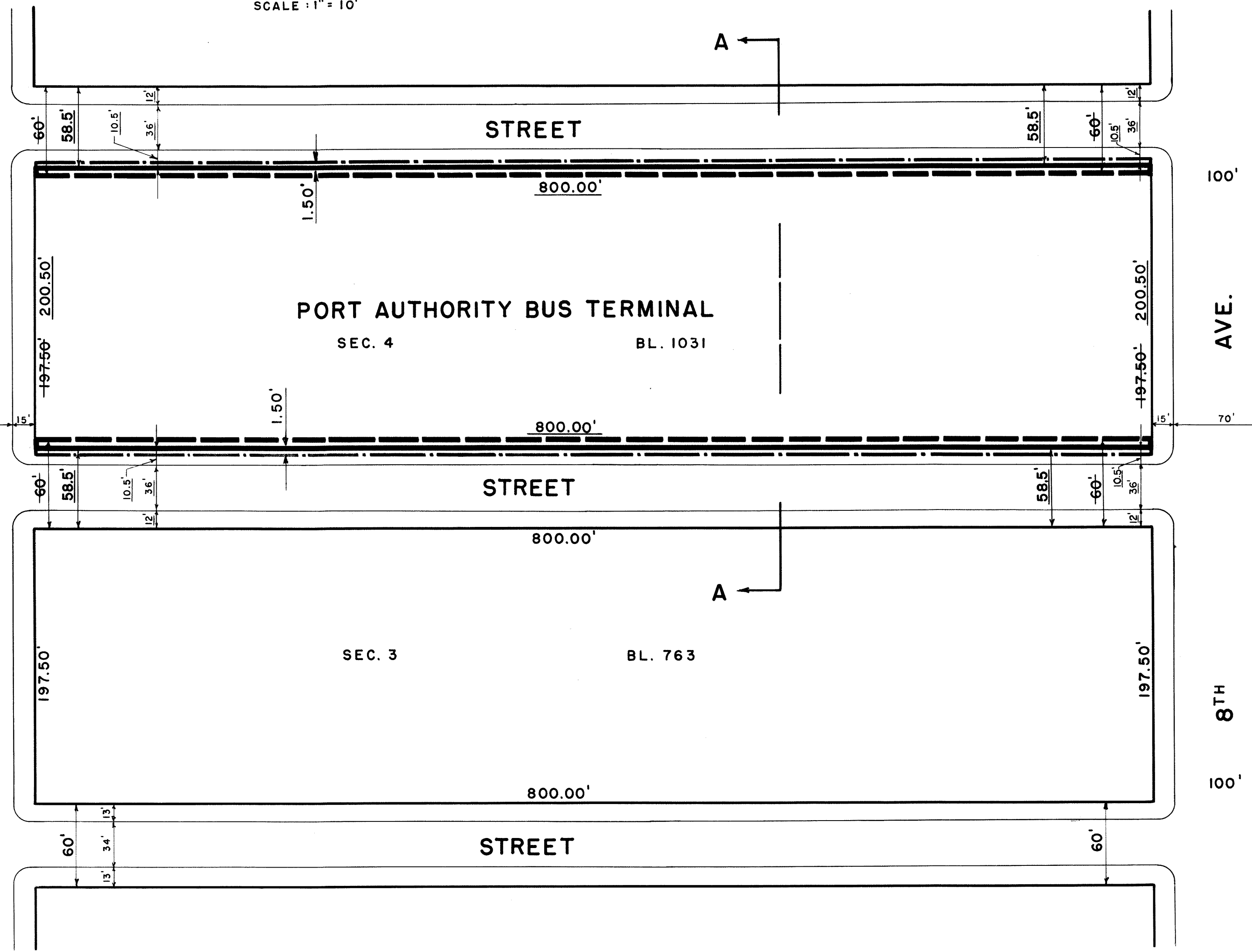
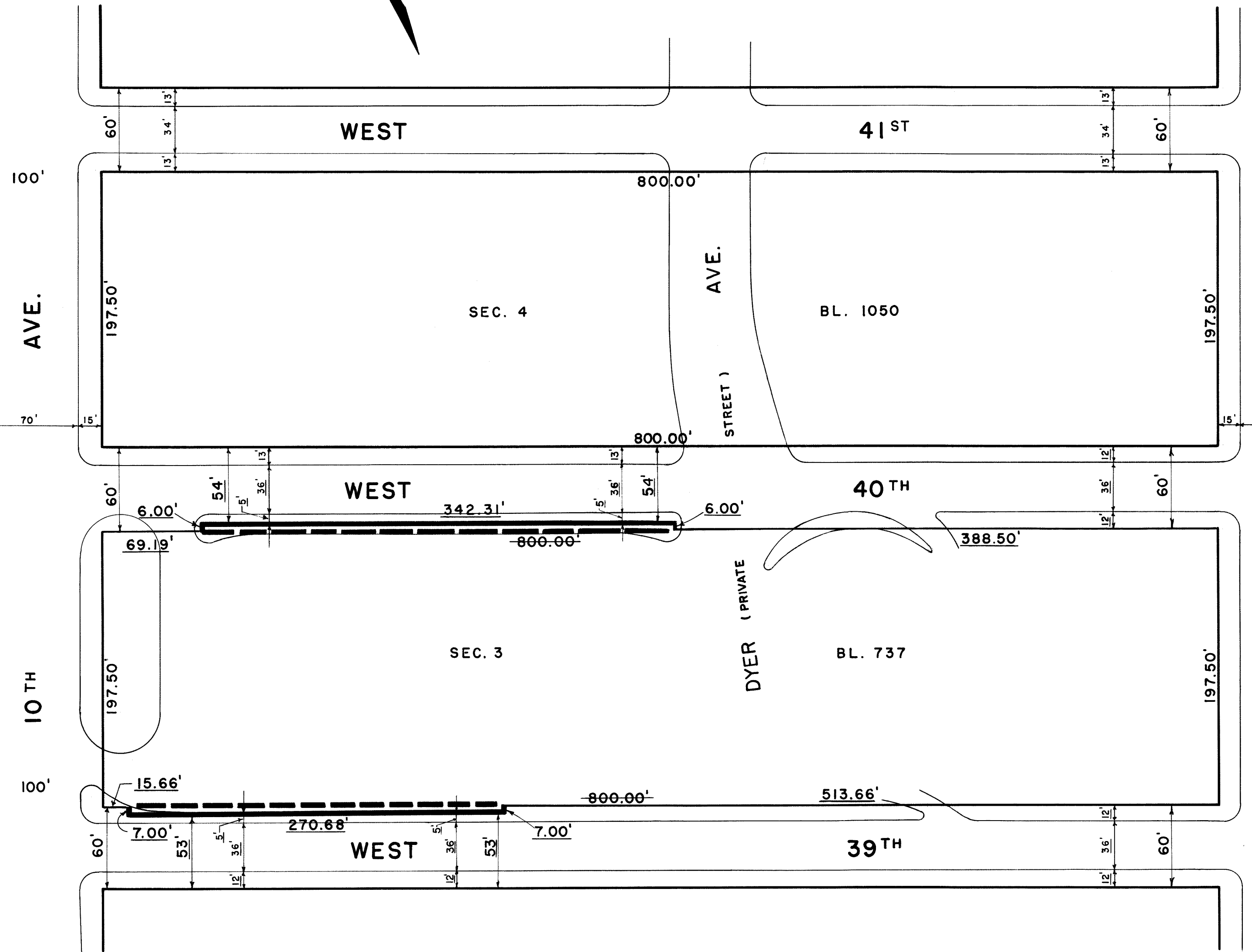


SECTION A-A
SCALE: 1" = 10'



NOTES

- INDICATES STREET LINE HERETOFORE ESTABLISHED AND HEREBY RETAINED.
- INDICATES STREET LINE HEREBY ESTABLISHED.
- INDICATES STREET LINE HERETOFORE ESTABLISHED AND HEREBY ELIMINATED.
- 800.00' INDICATES DIMENSION HERETOFORE ESTABLISHED AND HEREBY RETAINED.
- 513.66' INDICATES DIMENSION HEREBY ESTABLISHED.
- 60' INDICATES DIMENSION HERETOFORE ESTABLISHED AND HEREBY ELIMINATED.
- INDICATES SIDEWALK AND ROADWAY TREATMENT HEREBY ESTABLISHED OR HERETOFORE ESTABLISHED AND RETAINED.
- 15' INDICATES SIDEWALK AND ROADWAY TREATMENT DIMENSION HERETOFORE ESTABLISHED AND RETAINED.
- 10.5' INDICATES SIDEWALK AND ROADWAY TREATMENT DIMENSION HEREBY ESTABLISHED.
- INDICATES LIMITS OF VOLUME HEREBY ELIMINATED.

I, RUTH W. WHALEY, SECRETARY OF THE BOARD OF ESTIMATE OF THE CITY OF NEW YORK DO HEREBY CERTIFY THAT THIS MAP IS ONE OF FIVE SIMILAR MAPS ADOPTED BY THE SAID BOARD OF ESTIMATE ON THE 5TH APRIL, 1962, CAL. 70

DATED: NEW YORK JULY 2 1961

Ruth W. Whaley
SECRETARY BOARD OF ESTIMATE
H. 7

CITY OF NEW YORK
OFFICE OF THE PRESIDENT BOROUGH OF MANHATTAN
DEPARTMENT OF BOROUGH WORKS

MAP SHOWING A CHANGE IN THE STREET SYSTEM BY MODIFYING THE LINES OF PORTIONS OF

WEST 39TH AND WEST 40TH STREETS BETWEEN 9TH AVENUE AND 10TH AVENUE, AND OF WEST 40TH AND WEST 41ST STREETS BETWEEN 8TH AVENUE AND 9TH AVENUE, BY ELIMINATING A VOLUME OF WEST 40TH STREET AND WEST 41ST STREET BELOW A DESIGNATED UPPER LIMITING PLANE BETWEEN 8TH AVENUE AND 9TH AVENUE AND BY ESTABLISHING ROADWAY TREATMENT THEREFOR

DATED: DEC. 11, 1961 SCALE: 1" = 60'

William R. Bredas
PRESIDENT BOROUGH OF MANHATTAN

John T. Carroll
COMMISSIONER OF BOROUGH WORKS

Arthur J. Demergo
CHIEF ENGINEER

DRAWN BY: H.S.

CHECKED BY: F.S.

F. Sanchez
SECTION ENGINEER

Edmund J. Karp
ENGINEER OF PLANNING

Paul F. Petrofen
A&E ENGINEER OF DESIGN