

FIFTH AVE.

WASHINGTON SQUARE

SQUARE

NORTH

WEST

EAST

WEST WASHINGTON PL.

WASHINGTON PL.

SQUARE

SQUARE

WASHINGTON

WASHINGTON

WASHINGTON

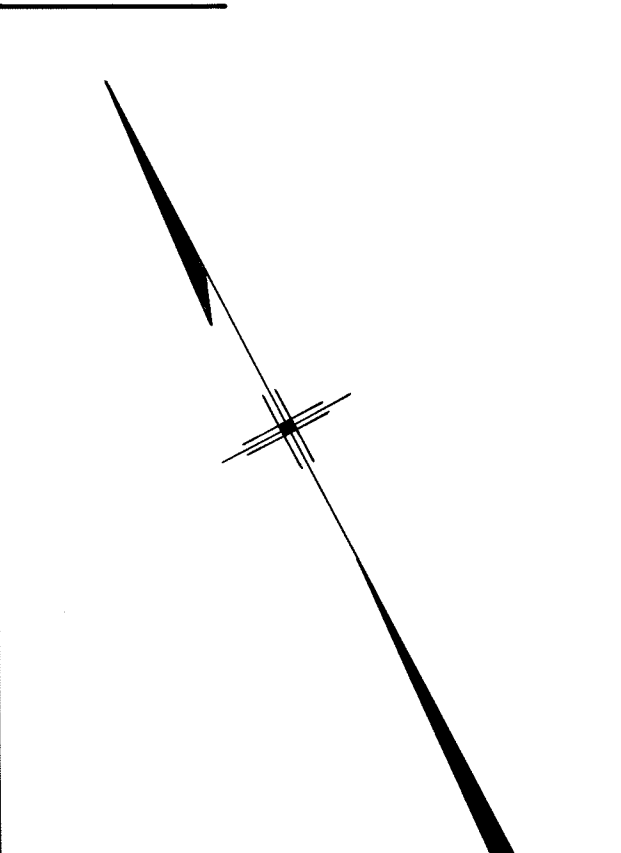
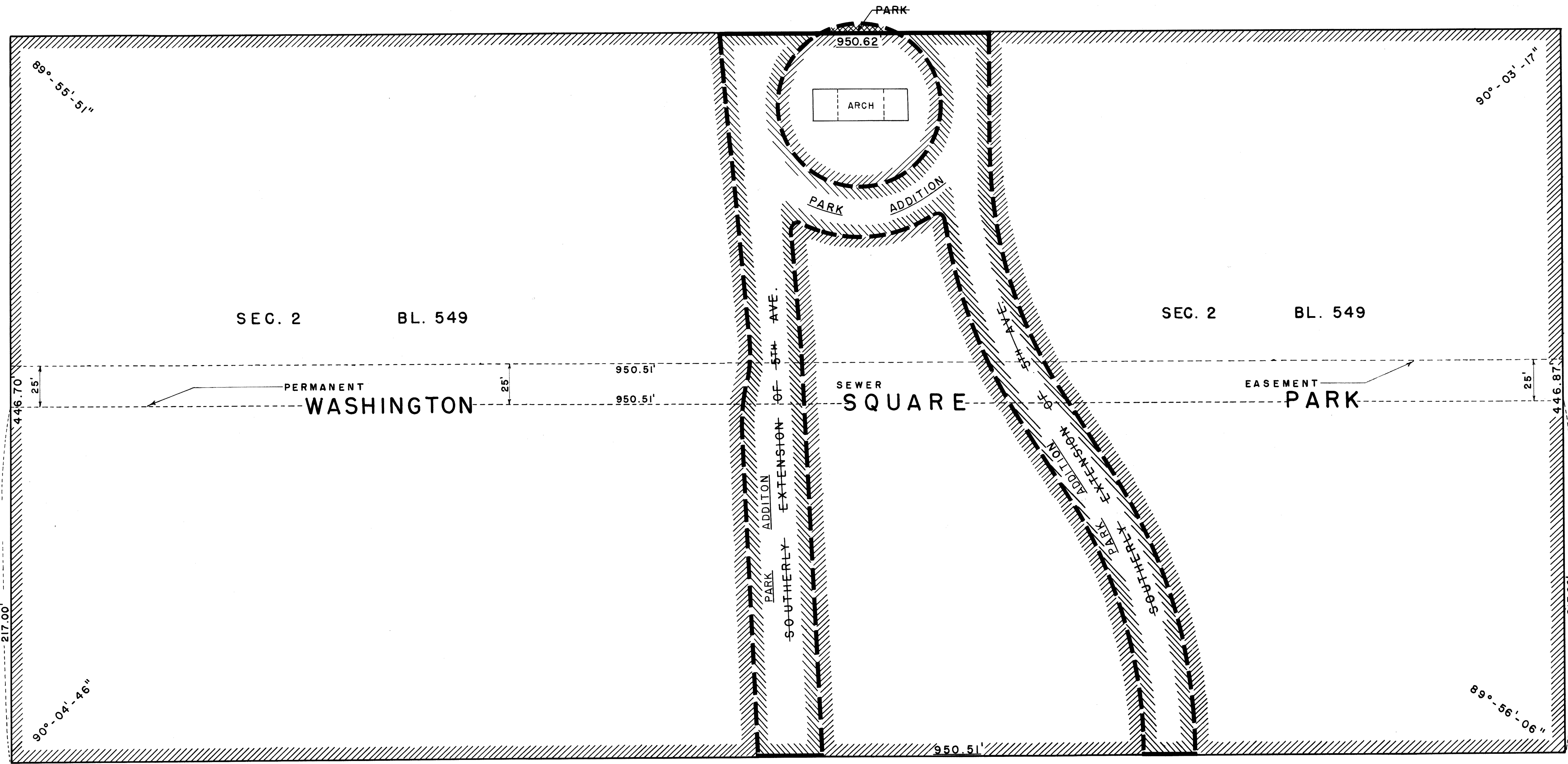
SQUARE

SOUTH

SULLIVAN ST.

THOMPSON ST.

WEST BROADWAY



NOTES

- INDICATES STREET LINE HERETOFORE ESTABLISHED AND HEREBY RETAINED.
- INDICATES STREET LINE HEREBY ESTABLISHED.
- INDICATES STREET LINE HERETOFORE ESTABLISHED AND HEREBY ELIMINATED.
- 446.87' INDICATES DIMENSION HERETOFORE ESTABLISHED AND HEREBY RETAINED.
- 950.51' INDICATES DIMENSION HEREBY ESTABLISHED.
- [PARK] INDICATES PARK HERETOFORE ESTABLISHED AND HEREBY RETAINED.
- [PARK ADDITION] INDICATES PARK ADDITION HEREBY ESTABLISHED.
- [PARK] INDICATES PARK HERETOFORE ESTABLISHED AND HEREBY ELIMINATED.

FOR EARLIER LAYOUTS OF FIFTH AVENUE EXTENSION SEE ACC. NO. 22055 AND ACC. NO. 28923

I, RUTH W. WHALEY, SECRETARY OF THE BOARD OF ESTIMATE OF THE CITY OF NEW YORK DO HEREBY CERTIFY THAT THIS MAP IS ONE OF FIVE SIMILAR MAPS ADOPTED BY THE SAID BOARD OF ESTIMATE ON FEB. 23<sup>RD</sup> 1962, CAL. 127

DATED NEW YORK, MAY 18 1962  
*Ruth W. Whaley*  
 SECRETARY, BOARD OF ESTIMATE

CITY OF NEW YORK  
 OFFICE OF THE PRESIDENT, BOROUGH OF MANHATTAN  
 DEPARTMENT OF BOROUGH WORKS  
 MAP SHOWING A CHANGE IN THE CITY MAP  
 BY ELIMINATING THE LINES OF THE SOUTHERLY EXTENSION OF  
**FIFTH AVENUE**

BETWEEN  
 WASHINGTON SQUARE SOUTH AND WASHINGTON SQUARE NORTH  
 AND BY LAYING OUT  
**A PARK ADDITION**  
 WITHIN THE ABOVE MENTIONED LIMITS

DATED AUG. 10, 1959 SCALE 1" = 40'

*Anthony Danz*  
 PRESIDENT, BOROUGH OF MANHATTAN

AWN BY H.J.  
 CHECKED BY F.S.

*F. J. Landis*  
 SECTION ENGINEER  
*Admiral J. Karp*  
 ENGINEER OF PLANNING

*Richard P. Phipps*  
 ACT. ENGINEER OF DESIGN

APPROVED FOR DEPARTMENT OF PARKS

*Newbold P. Phipps*  
 COMMISSIONER OF PARKS  
 2-14-62

FILED IN THE OFFICE OF THE PRES. BORO. MAN.  
 5/17/62 G.KATZ

*Anthony Danz*  
 CHIEF ENGINEER

Acc. 29743