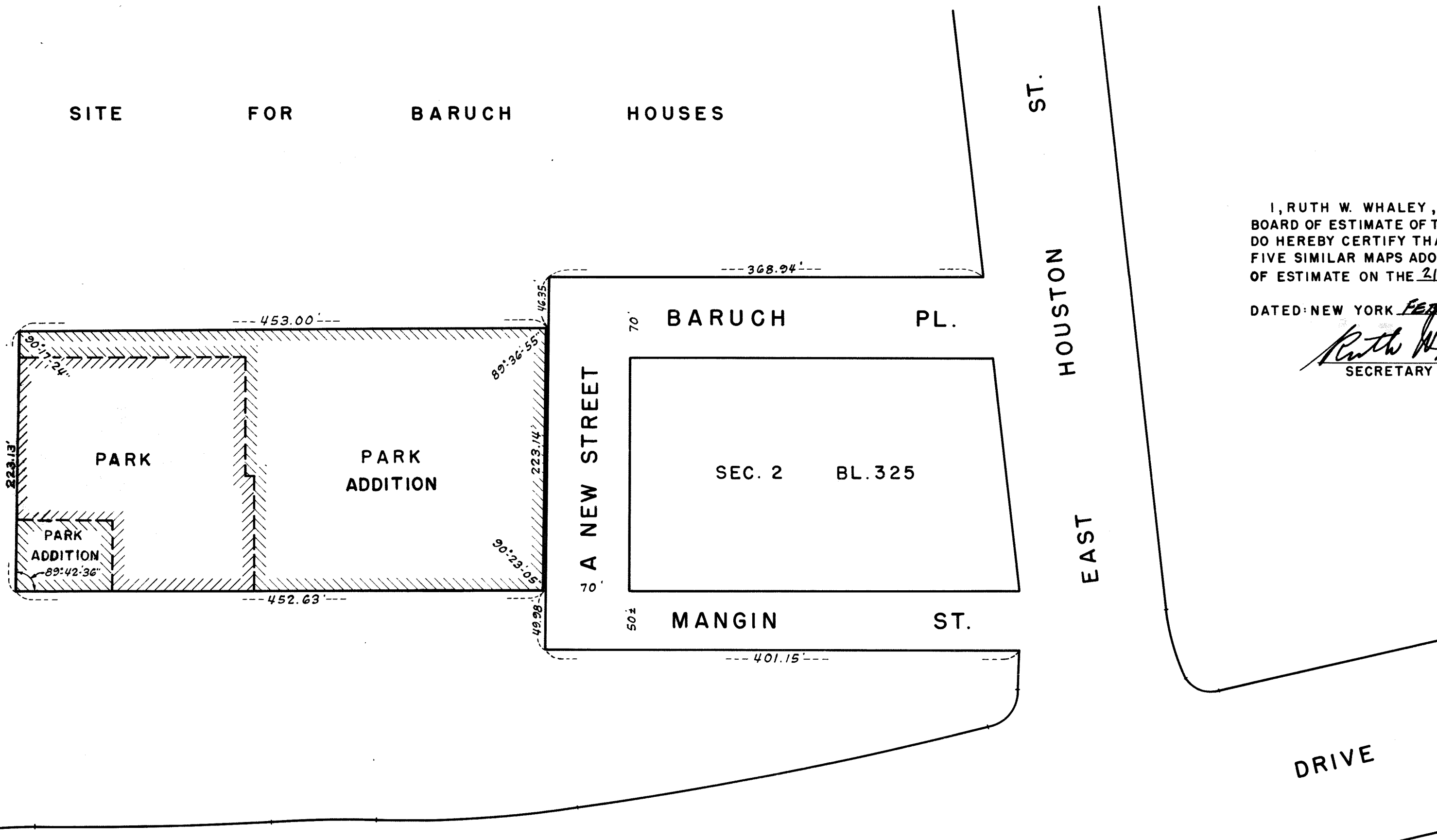


SITE FOR BARUCH HOUSES



I, RUTH W. WHALEY, SECRETARY OF THE BOARD OF ESTIMATE OF THE CITY OF NEW YORK DO HEREBY CERTIFY THAT THIS MAP IS ONE OF FIVE SIMILAR MAPS ADOPTED BY THE SAID BOARD OF ESTIMATE ON THE 21ST DAY OF DEC. 1961

DATED: NEW YORK FEBRUARY 16 1962

Ruth W. Whaley
SECRETARY BOARD OF ESTIMATE

2 BL. 323

FRANKLIN

D.

ROOSEVELT



DRIVE

CITY OF NEW YORK
OFFICE OF THE PRESIDENT BOROUGHS OF MANHATTAN
DEPARTMENT OF BOROUGH WORKS

MAP SHOWING A CHANGE IN THE CITY MAP BY CHANGING THE LINES OF
A PARK
WITHIN THE SITE FOR BARUCH HOUSES ADJACENT TO THE SOUTHERLY SIDE OF
A NEW STREET
BETWEEN
MANGIN STREET AND BARUCH PLACE

DATED: AUG. 1, 1952

NOTES

LINES AND DIMENSIONS PREVIOUSLY ESTABLISHED AND HEREBY RETAINED ARE SHOWN BY FULL BLACK LINES AND BLACK FIGURES.
LINES AND DIMENSIONS HEREBY ESTABLISHED ARE SHOWN BY FULL RED LINES AND RED FIGURES.
LINES PREVIOUSLY ESTABLISHED AND HEREBY ELIMINATED ARE SHOWN BY DASHED RED LINES.
PARK HEREBY ESTABLISHED SHOWN THUS.....  PARK
PARK PREVIOUSLY ESTABLISHED SHOWN THUS.....  PARK

Y: Sanchez
Y: Levy
Shaffert
ENGINEER
Collyer
ARCHITECT

Robert F. Wagner
PRESIDENT BOROUGHS OF MANHATTAN
Anthony Donarigo
CHIEF ENGINEER

FILED IN THE OFFICE OF THE PRES. BORO. MAN. 3/8/62
GK

20