

I, RUTH W. WHALEY, SECRETARY OF THE BOARD OF ESTIMATE OF THE CITY OF NEW YORK DO HEREBY CERTIFY THAT THIS MAP IS ONE OF FIVE SIMILAR MAPS ADOPTED BY THE SAID BOARD OF ESTIMATE ON THE 25TH MAY 1961, CAL. 232
 DATED: NEW YORK July 13, 1961
Ruth W. Whaley
 SECRETARY BOARD OF ESTIMATE

FOR PREVIOUS LAYOUTS OF THIS AREA SEE ACC. NOS. 24484 AND 29141

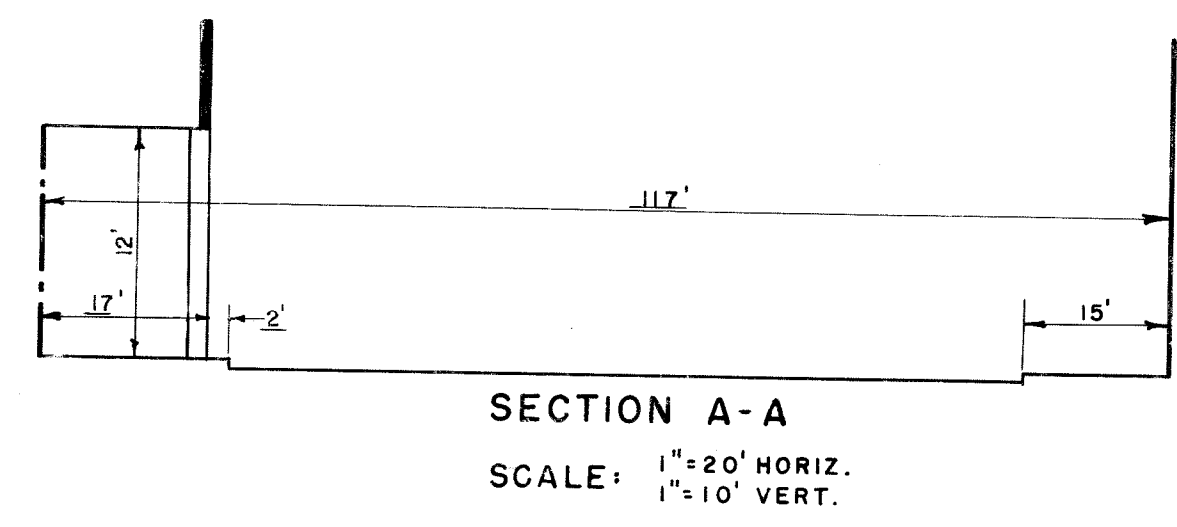
CITY OF NEW YORK
 OFFICE OF THE PRESIDENT BOROUGHS OF MANHATTAN
 DEPARTMENT OF BOROUGH WORKS
 MAP SHOWING A CHANGE IN THE STREET SYSTEM BY ELIMINATING THE WIDENING OF
SECOND AVENUE
 FROM EAST 57TH STREET TO EAST 58TH STREET AND FROM EAST 60TH STREET TO EAST 61TH STREET BY ELIMINATING THE
APPROACH TO THE QUEENSBORO BRIDGE
 IN THE AREA BOUNDED BY EAST 59TH STREET, THIRD AVENUE, EAST 60TH STREET AND SECOND AVENUE BY WIDENING
SECOND AVENUE
 FROM EAST 59TH STREET TO EAST 60TH STREET AND BY ESTABLISHING ROADWAY TREATMENT FOR THE QUEENSBORO BRIDGE PLAZA AND A VEHICULAR UNDERPASS TO SECOND AVENUE

DATED: JAN. 6, 1960

SCALE: 1" = 80'

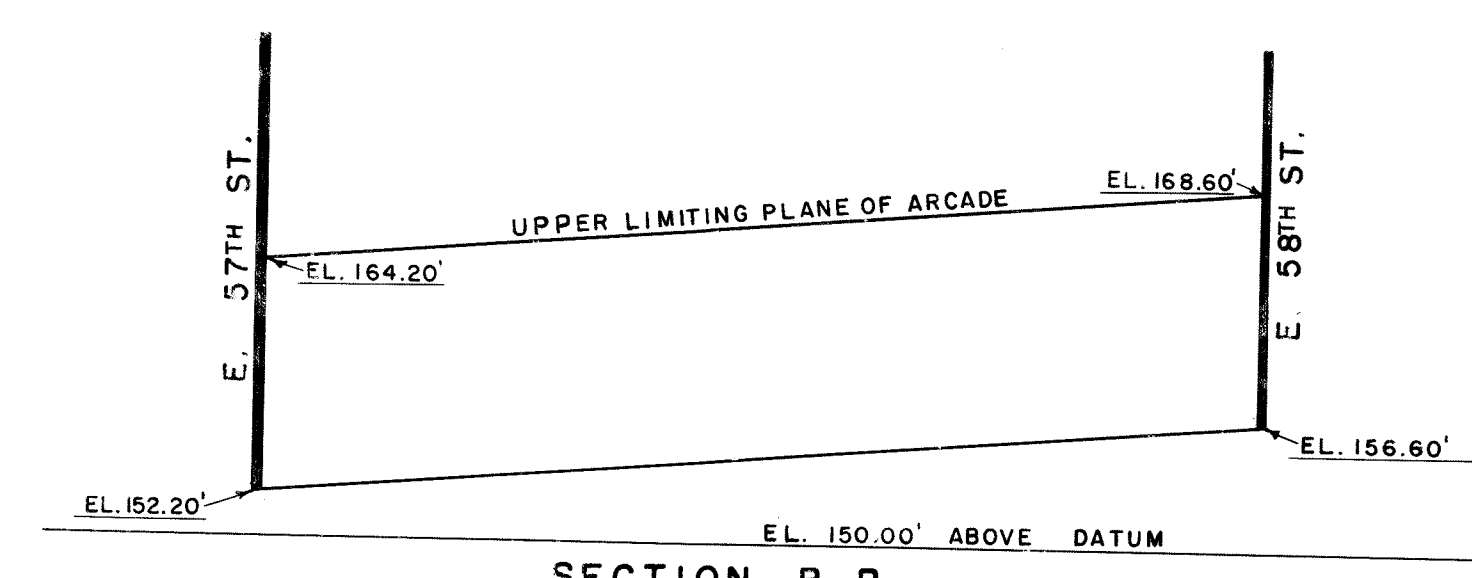
Arthur J. Sweeney
 PRESIDENT BOROUGHS OF MANHATTAN
Anthony J. Donato
 CHIEF ENGINEER

ACC. 29703



SECTION A-A
 SCALE: 1" = 20' HORIZ.
 1" = 10' VERT.

- NOTES
- 152.20' INDICATES ELEVATION HEREBY ESTABLISHED.
 - INDICATES STREET LINE HERETOFORE ESTABLISHED AND HEREBY RETAINED.
 - INDICATES STREET LINE HEREBY ESTABLISHED.
 - INDICATES STREET LINE HERETOFORE ESTABLISHED AND HEREBY ELIMINATED.
 - 283.00' INDICATES DIMENSION HERETOFORE ESTABLISHED AND HEREBY RETAINED.
 - 610.00' INDICATES DIMENSION HEREBY ESTABLISHED.
 - 60' INDICATES DIMENSION HERETOFORE ESTABLISHED AND HEREBY ELIMINATED.
 - INDICATES SIDEWALK AND ROADWAY TREATMENT HEREBY ESTABLISHED OR HERETOFORE ESTABLISHED AND RETAINED.
 - 15' INDICATES SIDEWALK AND ROADWAY TREATMENT DIMENSION HERETOFORE ESTABLISHED AND RETAINED.
 - 15' INDICATES SIDEWALK AND ROADWAY TREATMENT DIMENSION HEREBY ESTABLISHED.
 - INDICATES BRIDGE APPROACH LINE HERETOFORE ESTABLISHED AND HEREBY ELIMINATED.
 - ELEVATIONS ARE REFERRED TO THE BOROUGH WORKS DATUM OF THE BOROUGH OF MANHATTAN WHICH IS 2.75 FEET ABOVE THE U.S.C. & G. DATUM AT SANDY HOOK
 - INDICATES LINE OF SIDEWALK ARCADE.



SECTION B-B
 SCALE: 1" = 40' HORIZ.
 1" = 10' VERT.

DRAWN BY: H.C.F.
 CHECKED BY: F.S.
F. Sander
 SECTION ENGINEER
Edmund S. Kauf
 ENGINEER OF PLANNING

S. P. R.
 ENGINEER OF DESIGN