

I, RUTH W. WHALEY, SECRETARY OF THE BOARD OF ESTIMATE OF THE CITY OF NEW YORK DO HEREBY CERTIFY THAT THIS MAP IS ONE OF FIVE SIMILAR MAPS ADOPTED BY THE SAID BOARD OF ESTIMATE ON 15th SEPT. 1960 CAL. 71

DATED: NEW YORK JANUARY 4 1961

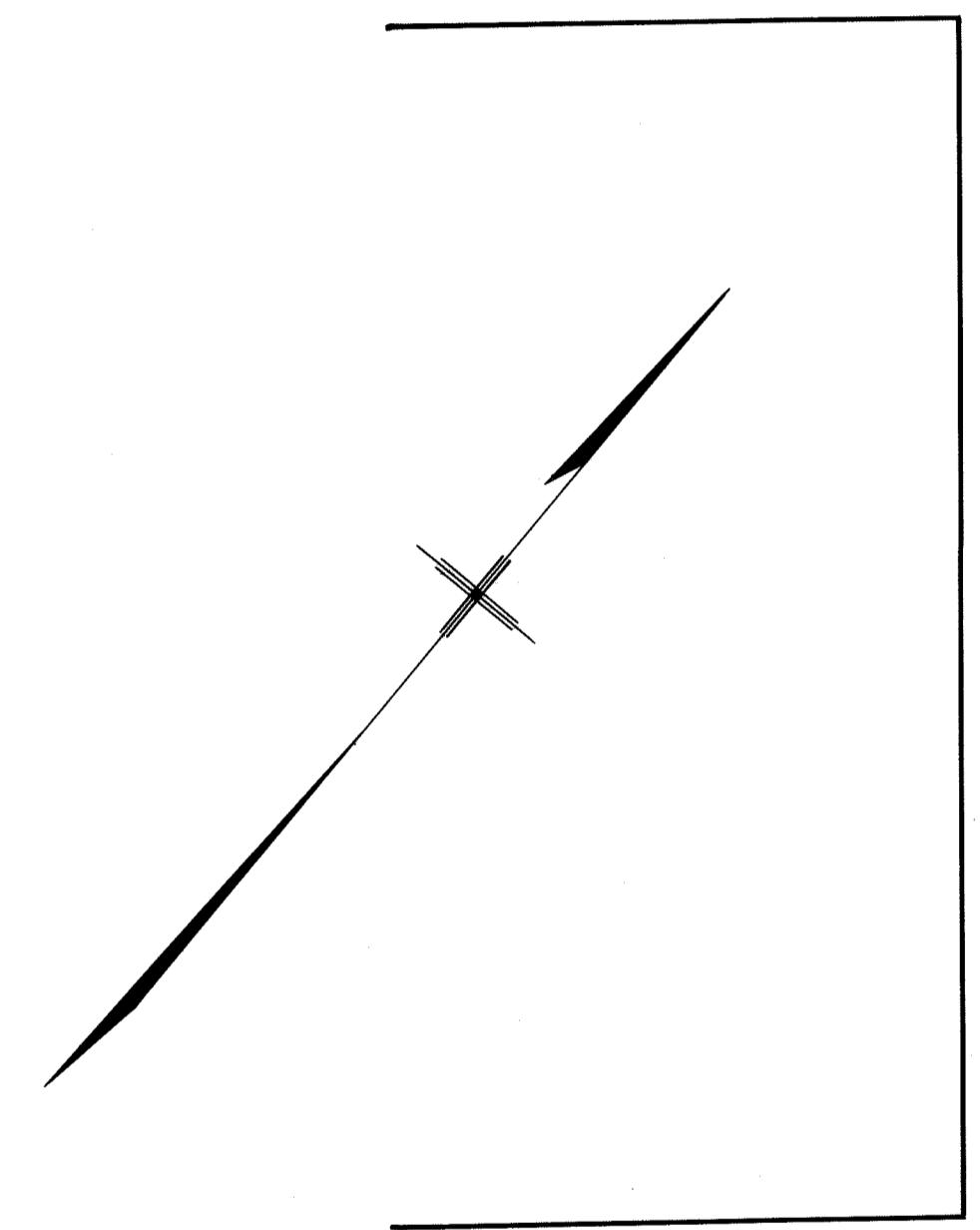
Ruth W. Whaley
SECRETARY BOARD OF ESTIMATE
N.Y.

WATER

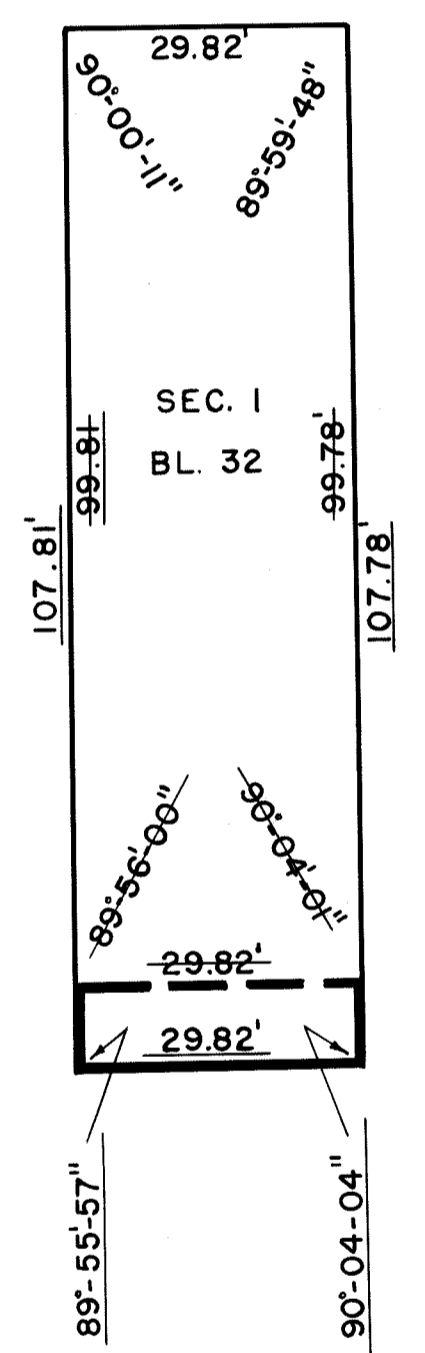
STREET

NOTES

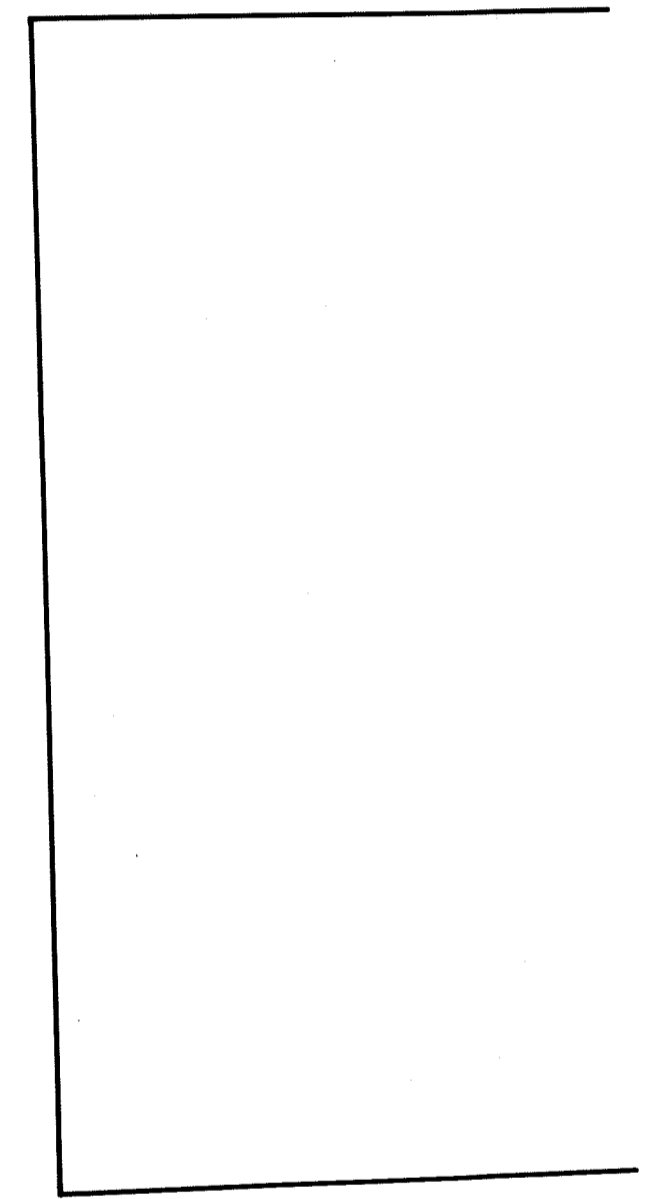
- INDICATES STREET LINE HERETOFORE ESTABLISHED AND HEREBY RETAINED.
- INDICATES STREET LINE HEREBY ESTABLISHED.
- INDICATES STREET LINE HERETOFORE ESTABLISHED AND HEREBY ELIMINATED.
- 29.82' INDICATES DIMENSION HERETOFORE ESTABLISHED AND HEREBY RETAINED.
- 107.78' INDICATES DIMENSION HEREBY ESTABLISHED.
- 99.81' INDICATES DIMENSION HERETOFORE ESTABLISHED AND HEREBY ELIMINATED.



SLIP



SLIP



OLD

STREET

FRONT

CITY OF NEW YORK
OFFICE OF THE PRESIDENT BOROUGHS OF MANHATTAN
DEPARTMENT OF BOROUGHS WORKS

MAP SHOWING A CHANGE IN THE STREET SYSTEM
BY ELIMINATING A PORTION OF
OLD SLIP
BETWEEN WATER STREET AND FRONT STREET

DATED: MAY 17, 1960

SCALE: 1" = 20'

DRAWN BY: *H.C.F.*
CHECKED BY: *F.S.*

F. Sanchez
SECTION ENGINEER
Edmund J. Karp
ENGINEER OF PLANNING

S.B.E.
ENGINEER OF DESIGN

Richard C. Cioffi
ACT. PRESIDENT BOROUGHS OF MANHATTAN

Anthony Donarzo
CHIEF ENGINEER

FILED IN THE OFFICE OF THE PRES. BOROUGHS MAN.
E. Katz 1/17/61

(B)
29662

Draw 19