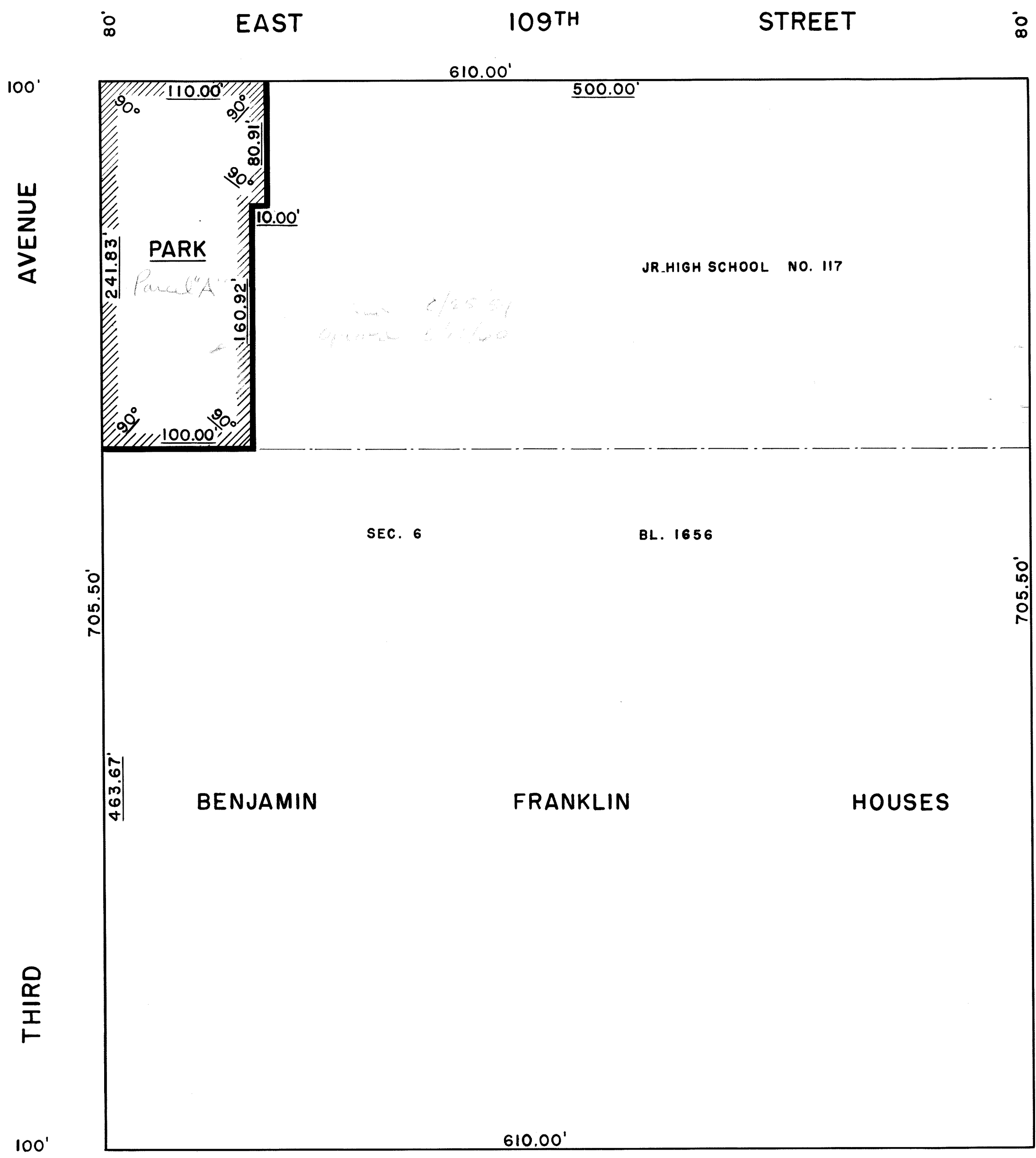


I, RUTH W. WHALEY, SECRETARY OF THE BOARD OF ESTIMATE OF THE CITY OF NEW YORK DO HEREBY CERTIFY THAT THIS MAP IS ONE OF FIVE SIMILAR MAPS ADOPTED BY THE SAID BOARD OF ESTIMATE ON DEC. 17, 1959 CAL. 170

DATED: NEW YORK
Ruth W. Whaley
 SECRETARY BOARD OF ESTIMATE
 N.Y.

DRAWN BY: H.S. & E.C.
 CHECKED BY: F.S.
F. Sanchez
 SECTION ENGINEER
Edmund J. Kap
 ENGINEER OF PLANNING



S. Bl
 ENGINEER OF DESIGN
[Signature]
 COMMISSIONER OF PARKS

NOTES

- INDICATES STREET LINE HERETOFORE ESTABLISHED AND HEREBY RETAINED.
- INDICATES PARK LINE HEREBY ESTABLISHED.
- 705.50' INDICATES DIMENSION HERETOFORE ESTABLISHED AND HEREBY RETAINED.
- 241.83' INDICATES DIMENSION HEREBY ESTABLISHED.
- INDICATES PARK HEREBY ESTABLISHED.

CITY OF NEW YORK
 OFFICE OF THE PRESIDENT BOROUGH OF MANHATTAN
 DEPARTMENT OF BOROUGH WORKS

MAP SHOWING A CHANGE IN THE CITY MAP
 BY LAYING OUT
A PARK
 AT THE CORNER OF 3RD AVENUE AND EAST 109TH STREET
 IN CONNECTION WITH THE
BENJAMIN FRANKLIN HOUSES

DATED: AUG. 14, 1959. SCALE: 1" = 60'

[Signature]
 PRESIDENT BOROUGH OF MANHATTAN
Anthony Donaghy
 CHIEF ENGINEER

FILED IN THE OFFICE OF THE PRES. BORO. MAN. 2/2/60 G. KATZ

(B)
 ACC. 29616

Draw 19