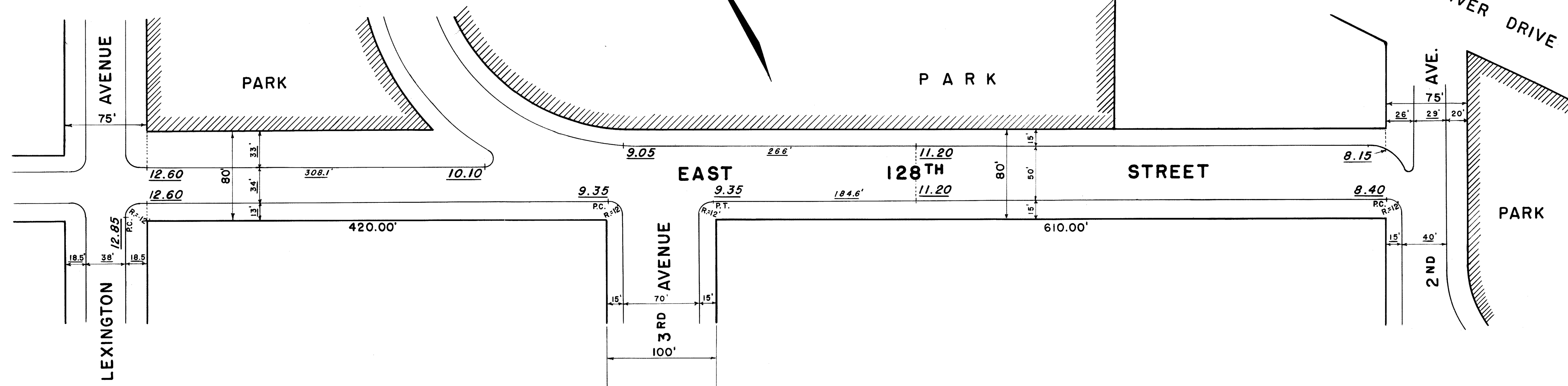


I, RUTH W. WHALEY, SECRETARY OF THE BOARD OF ESTIMATE OF THE CITY OF NEW YORK DO HEREBY CERTIFY THAT THIS MAP IS ONE OF FIVE SIMILAR MAPS ADOPTED BY THE SAID BOARD OF ESTIMATE ON OCT. 8<sup>TH</sup> 1959 CAL. 217

DATED: NEW YORK

*Ruth W. Whaley*  
SECRETARY BOARD OF ESTIMATE



**NOTES**

- INDICATES STREET LINE HERETOFORE ESTABLISHED AND HEREBY RETAINED.
- 80' INDICATES DIMENSION HERETOFORE ESTABLISHED AND HEREBY RETAINED.
- 9.35 INDICATES ELEVATION HEREBY ESTABLISHED.
- 184.6' INDICATES TIE-IN DISTANCES TO ELEVATIONS HEREBY ESTABLISHED.
- INDICATES SIDEWALK AND ROADWAY TREATMENT HEREBY ESTABLISHED OR HERETOFORE ESTABLISHED AND RETAINED.
- 15' INDICATES SIDEWALK AND ROADWAY TREATMENT DIMENSION HERETOFORE ESTABLISHED AND RETAINED.
- 15' INDICATES SIDEWALK AND ROADWAY TREATMENT DIMENSION HEREBY ESTABLISHED.
- ELEVATIONS ARE FOR TOP OF CURB AND ARE REFERRED TO THE BOROUGH WORKS DATUM OF THE BOROUGH OF MANHATTAN WHICH IS 2.75 FEET ABOVE THE U.S.C. & G. DATUM AT SANDY HOOK.
- [Hatched Box] INDICATES PARK HERETOFORE ESTABLISHED AND HEREBY RETAINED.

CITY OF NEW YORK  
OFFICE OF THE PRESIDENT BOROUGH OF MANHATTAN  
DEPARTMENT OF BOROUGH WORKS

**MAP SHOWING A CHANGE IN THE STREET SYSTEM  
BY ESTABLISHING GRADES AND ROADWAY TREATMENT FOR  
EAST 128<sup>TH</sup> STREET  
BETWEEN LEXINGTON AVENUE AND SECOND AVENUE**

DATED: JUNE 2, 1959.

SCALE: 1" = 60'

DRAWN BY: H.S.

CHECKED BY: F.S.

*F. S. Hinchey*  
SECTION ENGINEER

*Edmund J. Karp*  
ENGINEER OF PLANNING

*E. S. Ogle*  
ENGINEER OF DESIGN

*Anthony J. Demergo*  
PRESIDENT BOROUGH OF MANHATTAN  
*Anthony J. Demergo*  
CHIEF ENGINEER

FILED IN THE OFFICE OF THE PRES. BORO. MAN.

8

Daver 19

ACC. 29607