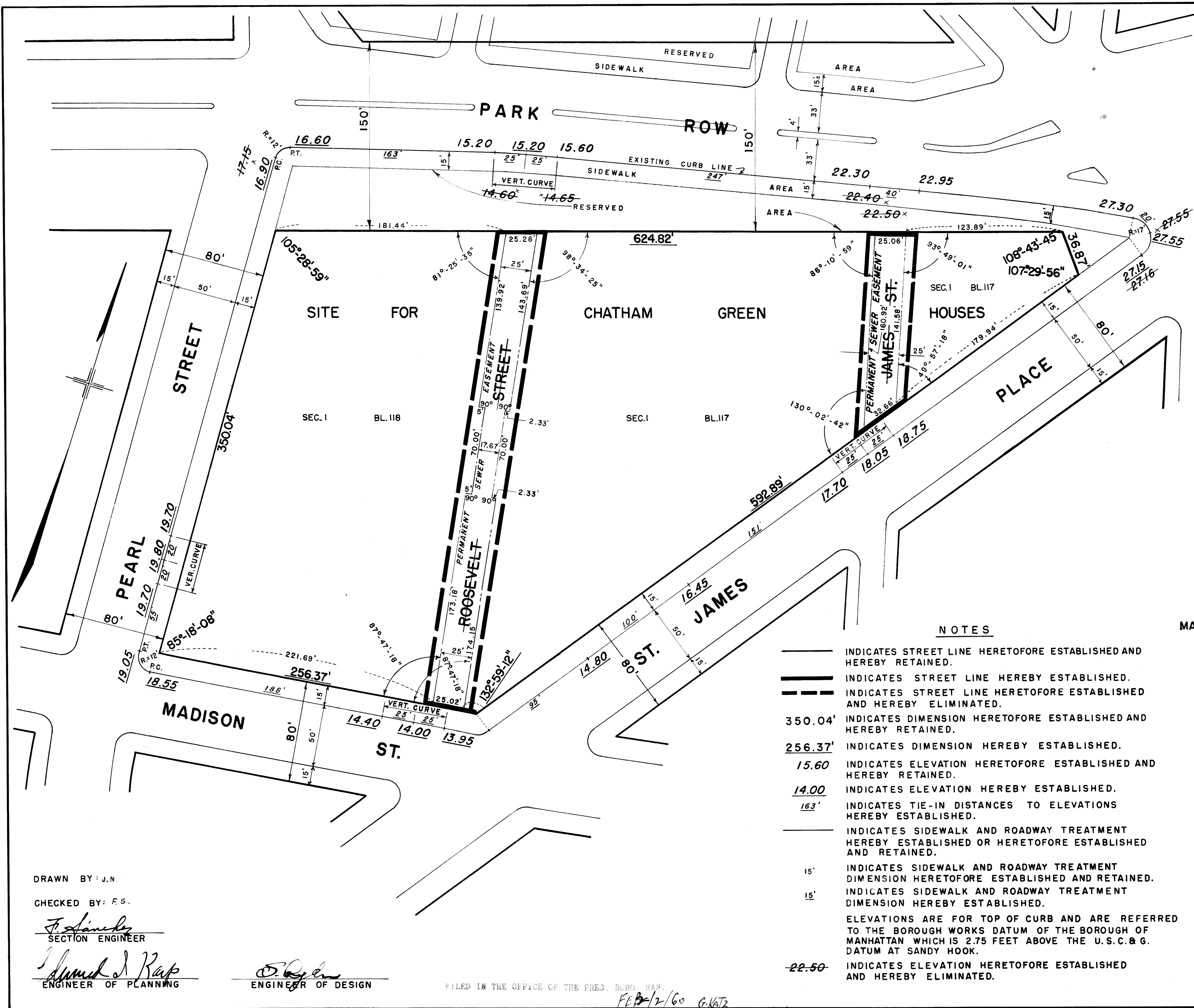


I, RUTH W. WHALEY, SECRETARY OF THE BOARD OF ESTIMATE OF THE CITY OF NEW YORK DO HEREBY CERTIFY THAT THIS MAP IS ONE OF FIVE SIMILAR MAPS ADOPTED BY THE SAID BOARD OF ESTIMATE ON 17TH OF SEPT. 1959. CAL. 100

DATED: NEW YORK
Ruth W. Whaley
 SECRETARY BOARD OF ESTIMATE
 H 7



CITY OF NEW YORK
 OFFICE OF THE PRESIDENT BOROUGHS OF MANHATTAN
 DEPARTMENT OF BOROUGHS WORKS

MAP SHOWING A CHANGE IN THE STREET SYSTEM BY ELIMINATING THE LINES OF
ROOSEVELT STREET
 BETWEEN PARK ROW AND MADISON STREET AND
JAMES STREET
 BETWEEN PARK ROW AND ST. JAMES PLACE IN CONNECTION WITH THE
CHATHAM GREEN HOUSES
 AND BY ESTABLISHING GRADES THEREFOR

NOTES

- INDICATES STREET LINE HERETOFORE ESTABLISHED AND HEREBY RETAINED.
- INDICATES STREET LINE HEREBY ESTABLISHED.
- INDICATES STREET LINE HERETOFORE ESTABLISHED AND HEREBY ELIMINATED.
- 350.04' INDICATES DIMENSION HERETOFORE ESTABLISHED AND HEREBY RETAINED.
- 256.37' INDICATES DIMENSION HEREBY ESTABLISHED.
- 15.60 INDICATES ELEVATION HERETOFORE ESTABLISHED AND HEREBY RETAINED.
- 14.00 INDICATES ELEVATION HEREBY ESTABLISHED.
- 163' INDICATES TIE-IN DISTANCES TO ELEVATIONS HEREBY ESTABLISHED.
- INDICATES SIDEWALK AND ROADWAY TREATMENT HEREBY ESTABLISHED OR HERETOFORE ESTABLISHED AND RETAINED.
- 15' INDICATES SIDEWALK AND ROADWAY TREATMENT DIMENSION HERETOFORE ESTABLISHED AND RETAINED.
- 15' INDICATES SIDEWALK AND ROADWAY TREATMENT DIMENSION HEREBY ESTABLISHED.
- ELEVATIONS ARE FOR TOP OF CURB AND ARE REFERRED TO THE BOROUGHS WORKS DATUM OF THE BOROUGHS OF MANHATTAN WHICH IS 2.75 FEET ABOVE THE U.S.C. & G. DATUM AT SANDY HOOK.
- 22.50- INDICATES ELEVATION HERETOFORE ESTABLISHED AND HEREBY ELIMINATED.

DATED: APRIL 13, 1959. SCALE: 1"=50'

Anthony Donarzo
 PRESIDENT BOROUGHS OF MANHATTAN
Anthony Donarzo
 CHIEF ENGINEER

DRAWN BY: J.N.
 CHECKED BY: F.S.
F. Sanchez
 SECTION ENGINEER
Samuel S. Kap
 ENGINEER OF PLANNING
S. J. Kelly
 ENGINEER OF DESIGN

FILED IN THE OFFICE OF THE PRES. BORO. MAN.
 FEB 2/60 G.H.T.

Drawn 19