




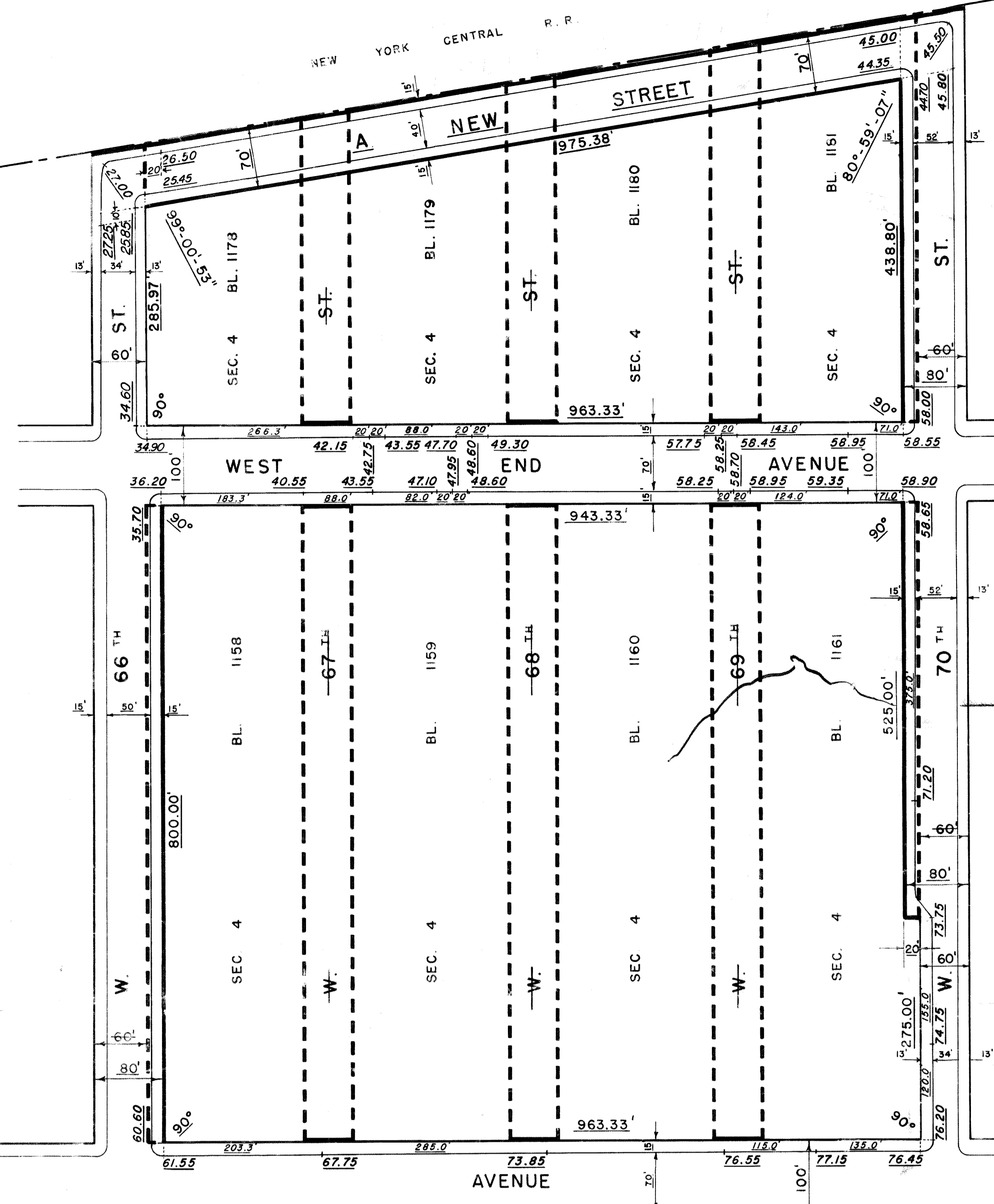
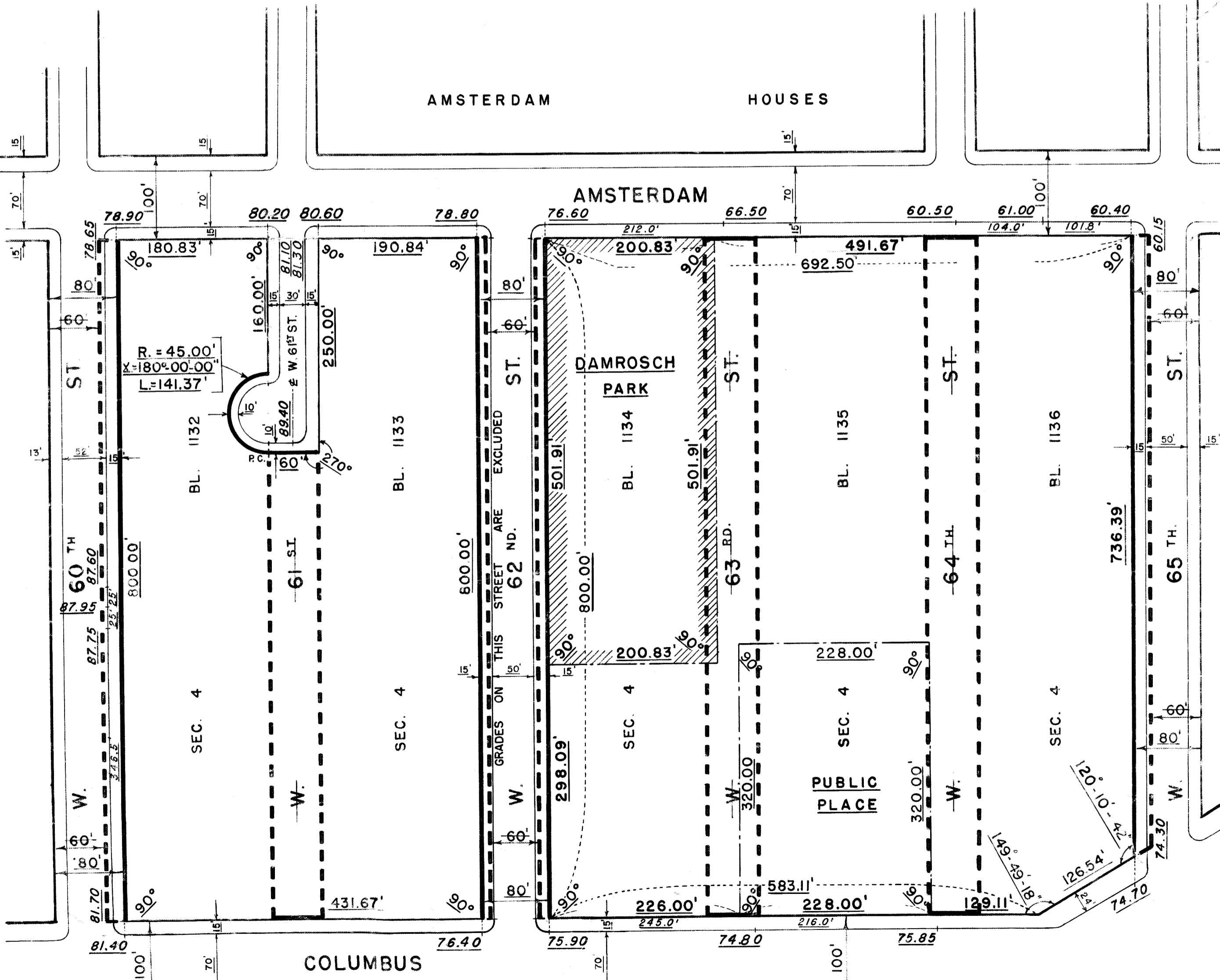


- NOTES**
-  INDICATES PARK HEREBY ESTABLISHED.
  -  INDICATES PUBLIC PLACE HEREBY ESTABLISHED.
  - 26.50  
71.0' INDICATES ELEVATION HEREBY ESTABLISHED.  
INDICATES TIE-IN DISTANCES TO ELEVATIONS HEREBY ESTABLISHED.
  -  INDICATES SIDEWALK AND ROADWAY TREATMENT HEREBY ESTABLISHED OR HERETOFORE ESTABLISHED AND RETAINED.
  -  INDICATES STREET LINE HERETOFORE ESTABLISHED AND HEREBY RETAINED.
  -  INDICATES STREET LINE HERETOFORE ESTABLISHED AND HEREBY ELIMINATED.
  - 100.00 INDICATES DIMENSION HERETOFORE ESTABLISHED AND HEREBY RETAINED.
  - 525.00 INDICATES DIMENSION HEREBY ESTABLISHED.
  - 60- INDICATES DIMENSION HERETOFORE ESTABLISHED AND HEREBY ELIMINATED.
  - 15' INDICATES SIDEWALK AND ROADWAY TREATMENT DIMENSION HEREBY ESTABLISHED.
  - 24' INDICATES SIDEWALK AND ROADWAY TREATMENT DIMENSION HERETOFORE ESTABLISHED AND RETAINED.

I, RUTH W. WHALEY, SECRETARY OF THE BOARD OF ESTIMATE OF THE CITY OF NEW YORK DO HEREBY CERTIFY THAT THIS MAP IS ONE OF FIVE SIMILAR MAPS ADOPTED BY THE SAID BOARD OF ESTIMATE ON THE 12<sup>TH</sup> DAY OF MAY 1959  
 DATED: NEW YORK JUNE 15 1959  
*Ruth W. Whaley*  
 SECRETARY BOARD OF ESTIMATE  
 H-7

*This map presented on June 15, 1959 by*  
 29809



CITY OF NEW YORK  
 OFFICE OF THE PRESIDENT BOROUGH OF MANHATTAN  
 DEPARTMENT OF BOROUGH WORKS

MAP SHOWING A CHANGE IN THE STREET SYSTEM BY ELIMINATING AND WIDENING STREETS IN THE AREA BOUNDED BY WEST 60<sup>TH</sup> STREET, AMSTERDAM AVENUE, WEST 66<sup>TH</sup> STREET, NEW YORK CENTRAL RAILROAD, WEST 70<sup>TH</sup> STREET, AMSTERDAM AVENUE, WEST 65<sup>TH</sup> STREET BROADWAY AND COLUMBUS AVENUE, BY LAYING OUT A NEW STREET ALONG THE EASTERLY SIDE OF THE NEW YORK CENTRAL RAILROAD BETWEEN WEST 66<sup>TH</sup> STREET AND WEST 70<sup>TH</sup> STREET AND BY LAYING OUT A PARK AND A PUBLIC PLACE AND BY ESTABLISHING GRADES AND ROADWAY TREATMENT THEREFOR ALL IN CONNECTION WITH THE SITE FOR LINCOLN SQUARE DEVELOPMENT

DATED: JAN. 29, 1959 SCALE: 1" = 100'

DRAWN BY: E.A.C.H.S.  
 CHECKED BY: F.S.  
*F. Sanchez*  
 SECTION ENGINEER  
*Edmund J. Karp*  
 ENGINEER OF PLANNING

*S. G. P.*  
 ENGINEER OF DESIGN

APPROVED FOR DEPT. OF PARKS:  
*Anthony Donangelo*  
 COMMISSIONER OF PARKS

*Anthony Donangelo*  
 PRESIDENT BOROUGH OF MANHATTAN  
 CHIEF ENGINEER