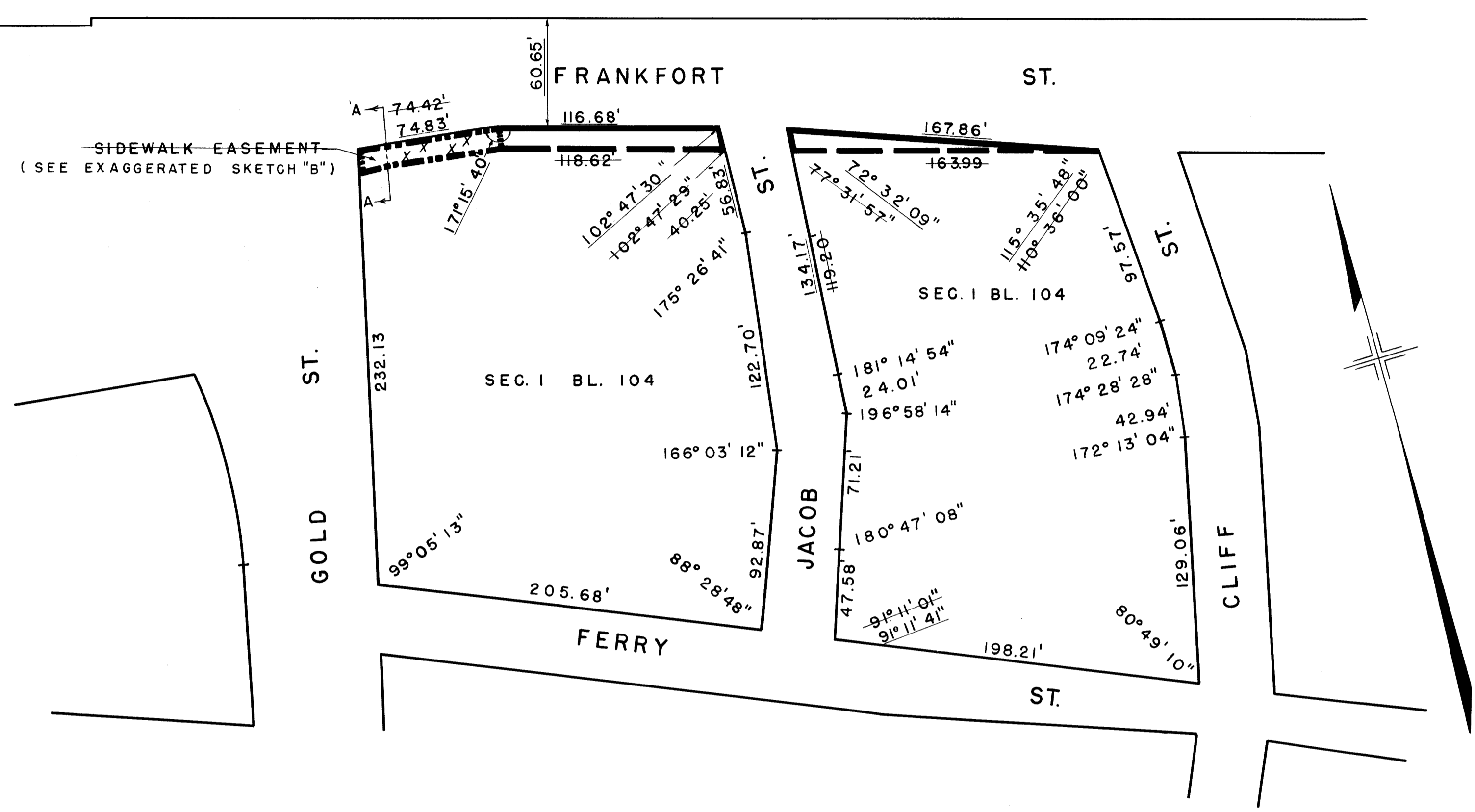


I, RUTH W. WHALEY, SECRETARY OF THE BOARD OF ESTIMATE OF THE CITY OF NEW YORK DO HEREBY CERTIFY THAT THIS MAP IS ONE OF FIVE SIMILAR MAPS ADOPTED BY THE SAID BOARD OF ESTIMATE ON THE 13TH DAY OF FEB. 1959

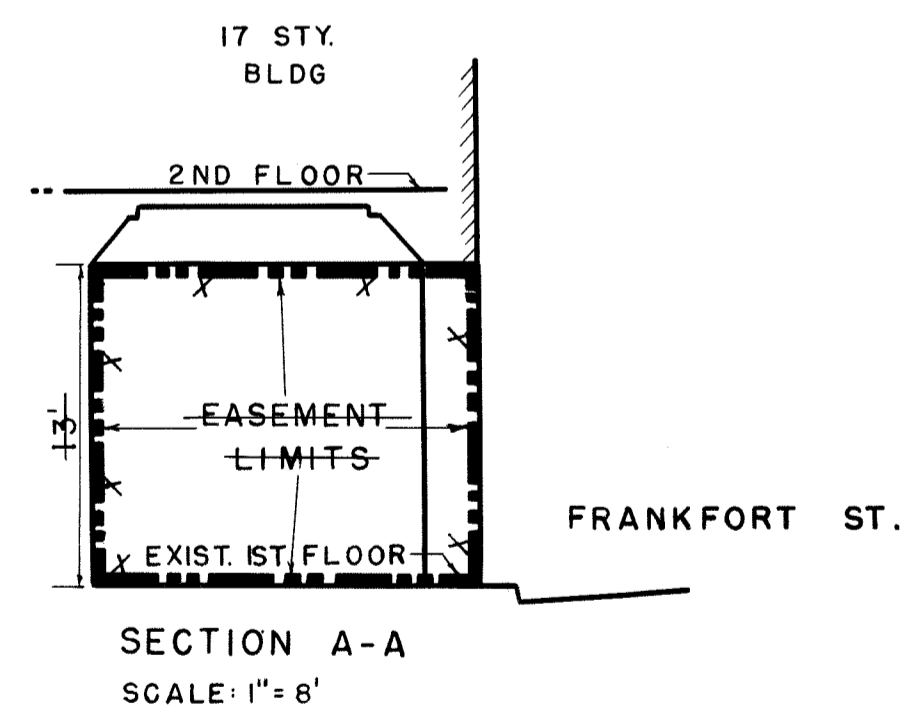
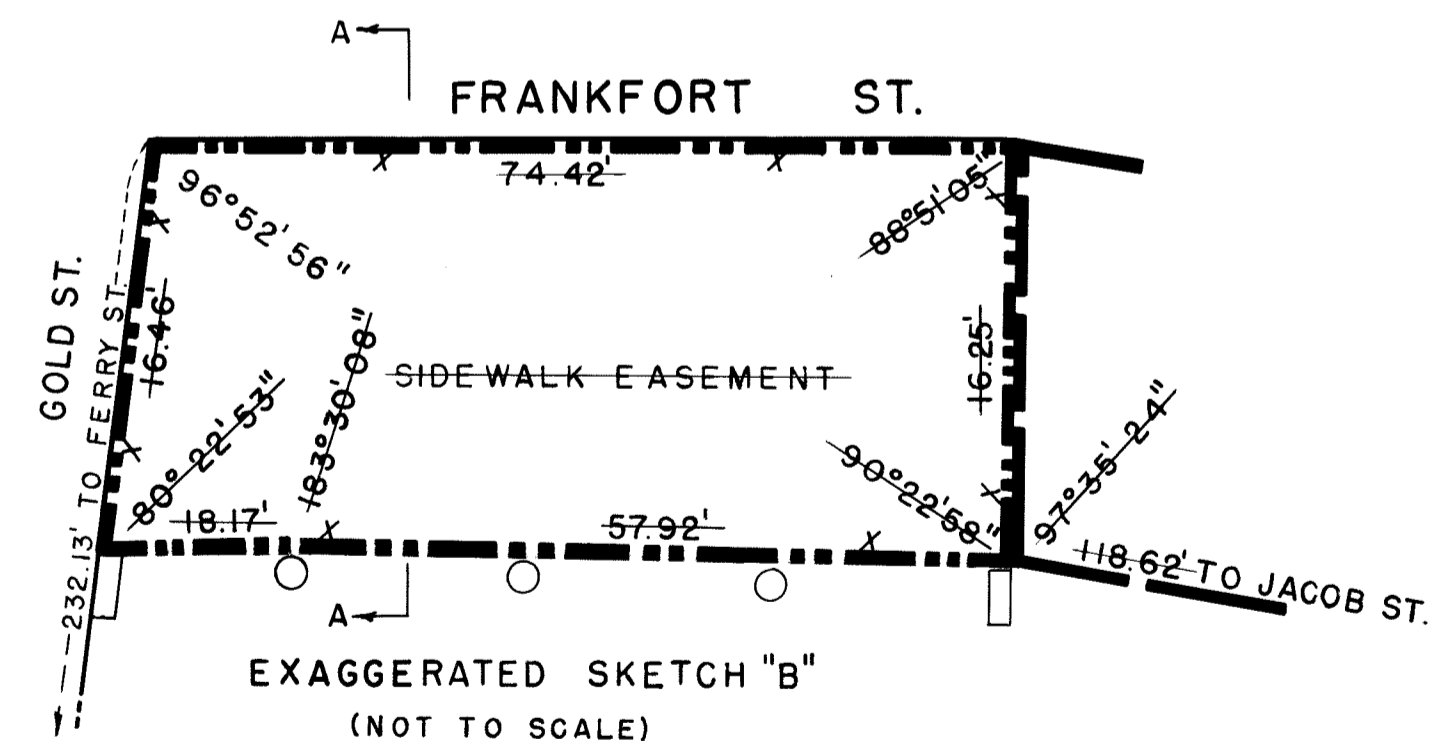
DATED: NEW YORK APRIL 20, 1959

Ruth W. Whaley
SECRETARY BOARD OF ESTIMATE
N.Y.



NOTES

- INDICATES STREET LINE HERETOFORE ESTABLISHED AND HEREBY RETAINED.
- INDICATES STREET LINE HEREBY ESTABLISHED.
- - - INDICATES STREET LINE HERETOFORE ESTABLISHED AND HEREBY ELIMINATED.
- X - - - X INDICATES LINES OF SIDEWALK EASEMENT HERETOFORE ESTABLISHED AND HEREBY ELIMINATED.
- 232.13' INDICATES DIMENSION HERETOFORE ESTABLISHED AND HEREBY RETAINED.
- 116.68' INDICATES DIMENSION HEREBY ESTABLISHED
- ~~+63.99'~~ INDICATES DIMENSION HERETOFORE ESTABLISHED AND HEREBY ELIMINATED.



CITY OF NEW YORK
OFFICE OF THE PRESIDENT BOROUGH OF MANHATTAN
DEPARTMENT OF BOROUGH WORKS
MAP SHOWING A CHANGE IN THE STREET SYSTEM BY MODIFYING THE SOUTHERLY LINE OF
FRANKFORT STREET
BETWEEN CLIFF STREET AND GOLD STREET
AND BY
ELIMINATING THE LINES AND LIMITS OF A THREE DIMENSIONAL, SIDEWALK EASEMENT AT
GOLD AND FRANKFORT STREETS
IN CONNECTION WITH THE FINAL STAGE OF THE
BROOKLYN BRIDGE IMPROVEMENT

DATED: DECEMBER 16, 1958 SCALE: 1" = 50'

Anthony J. Donato
PRESIDENT BOROUGH OF MANHATTAN
Anthony J. Donato
CHIEF ENGINEER

DRAWN BY: H.J.

CHECKED BY: F.S.

F. Sanchez
SECTION ENGINEER

Edmund J. Kauf
ENGINEER OF PLANNING

S. P. [Signature]
ENGINEER OF DESIGN