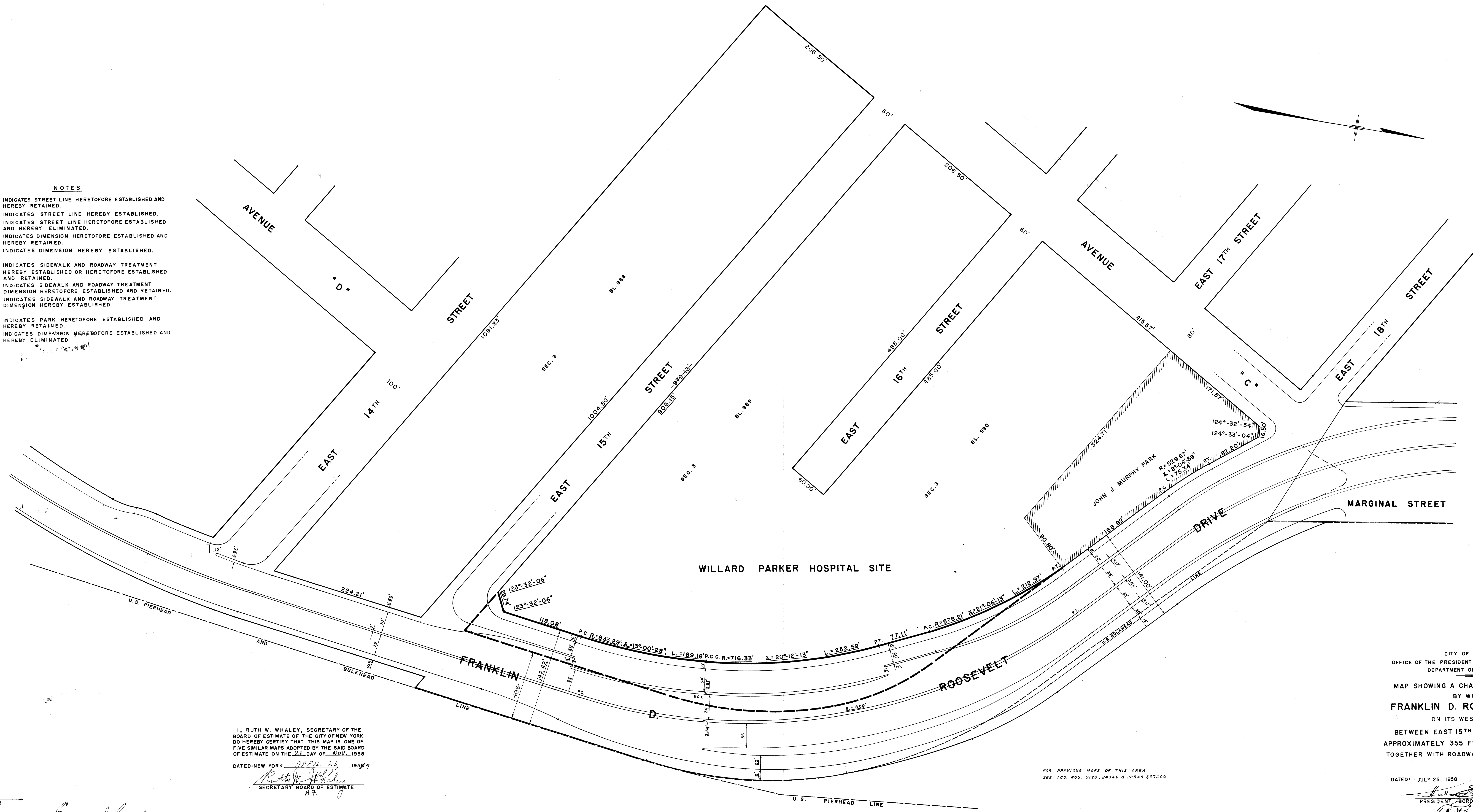


- NOTES**
- INDICATES STREET LINE HERETOFORE ESTABLISHED AND HEREBY RETAINED.
 - INDICATES STREET LINE HEREBY ESTABLISHED.
 - INDICATES STREET LINE HERETOFORE ESTABLISHED AND HEREBY ELIMINATED.
 - 224.21' INDICATES DIMENSION HERETOFORE ESTABLISHED AND HEREBY RETAINED.
 - 906.15' INDICATES DIMENSION HEREBY ESTABLISHED.
 - INDICATES SIDEWALK AND ROADWAY TREATMENT HEREBY ESTABLISHED OR HERETOFORE ESTABLISHED AND RETAINED.
 - 32' INDICATES SIDEWALK AND ROADWAY TREATMENT DIMENSION HERETOFORE ESTABLISHED AND RETAINED.
 - 18' INDICATES SIDEWALK AND ROADWAY TREATMENT DIMENSION HEREBY ESTABLISHED.
 - PARK INDICATES PARK HERETOFORE ESTABLISHED AND HEREBY RETAINED.
 - +60' INDICATES DIMENSION HERETOFORE ESTABLISHED AND HEREBY ELIMINATED.



I, RUTH W. WHALEY, SECRETARY OF THE BOARD OF ESTIMATE OF THE CITY OF NEW YORK DO HEREBY CERTIFY THAT THIS MAP IS ONE OF FIVE SIMILAR MAPS ADOPTED BY THE SAID BOARD OF ESTIMATE ON THE 21 DAY OF MAY, 1958

DATED NEW YORK APRIL 23 1958

Ruth W. Whaley
SECRETARY BOARD OF ESTIMATE
H.T.

DRAWN BY: H.S.
CHECKED BY: F.S.

F. Lincoln
SECTION ENGINEER

Edmund J. Karp
ENGINEER OF PLANNING

Edwards Smith
ENGINEER OF DESIGN

CITY OF NEW YORK
OFFICE OF THE PRESIDENT, BOROUGH OF MANHATTAN
DEPARTMENT OF BOROUGH WORKS

MAP SHOWING A CHANGE IN THE CITY MAP
BY WIDENING
FRANKLIN D. ROOSEVELT DRIVE
ON ITS WESTERLY SIDE
BETWEEN EAST 15TH STREET AND A POINT
APPROXIMATELY 355 FEET EAST OF AVENUE "C"
TOGETHER WITH ROADWAY TREATMENT THEREFOR

DATED: JULY 25, 1958 SCALE: 1"=50'

President, Borough of Manhattan
Chief Engineer

FOR PREVIOUS MAPS OF THIS AREA
SEE ACC. NOS. 9123, 24344 & 28548 4271.05

Drawn 55