

E. 124<sup>TH</sup> ST.

SENATOR ROBERT F. WAGNER SR. HOUSES

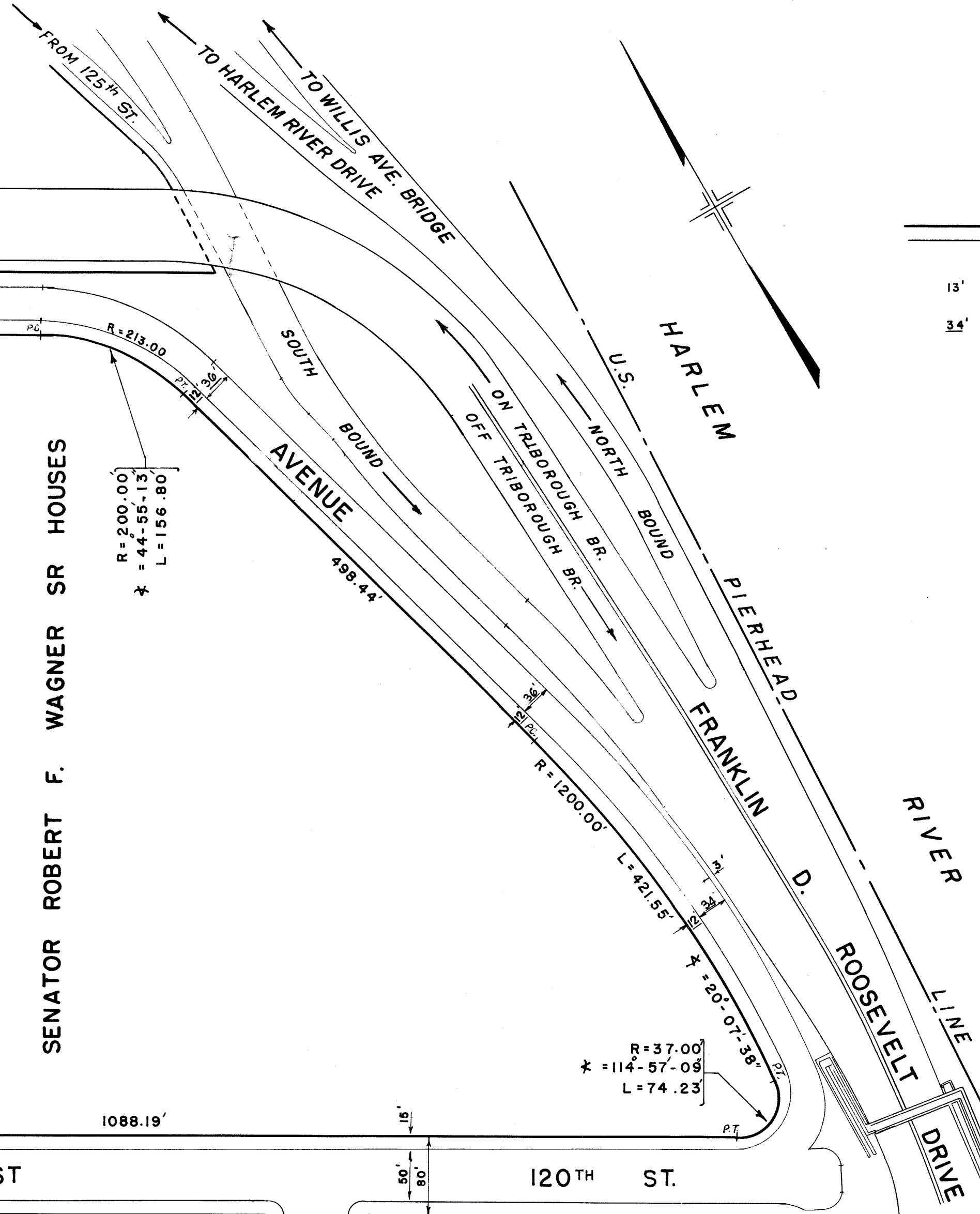
FIRST AVENUE

PALADINO

SENATOR ROBERT F. WAGNER SR HOUSES

EAST

120<sup>TH</sup> ST.



**NOTES**

- INDICATES STREET LINE HERETOFORE ESTABLISHED AND HERE BY RETAINED
- INDICATES ROADWAY AND SIDEWALK TREATMENT HEREBY ESTABLISHED OR HERETOFORE ESTABLISHED AND RETAINED
- 13' INDICATES SIDEWALK AND ROADWAY TREATMENT DIMENSION HERETOFORE ESTABLISHED AND RETAINED
- 34' INDICATES SIDEWALK AND ROADWAY TREATMENT DIMENSION HEREBY ESTABLISHED

CITY OF NEW YORK  
 OFFICE OF THE PRESIDENT BOROUGHS OF MANHATTAN  
 DEPARTMENT OF BOROUGH WORKS

MAP SHOWING A CHANGE IN THE CITY MAP  
 BY CHANGING THE ROADWAY TREATMENT  
 OF  
**FRANKLIN D. ROOSEVELT DRIVE  
 AND PALADINO AVENUE**  
 BETWEEN  
**EAST 120<sup>TH</sup> STREET AND FIRST AVENUE**

DATED: MARCH 14 1957 SCALE 1"=100'

DRAWN BY: E.A.G.  
CHECKED BY: H.S.

*J. Sanchez*  
SECTION ENGINEER

*Edmund Karp*  
ENGINEER OF PLANNING

*Edward Smith*  
ENGINEER OF DESIGN

I, RUTH W. WHALEY, SECRETARY OF THE BOARD OF ESTIMATE OF THE CITY OF NEW YORK DO HEREBY CERTIFY THAT THIS MAP IS ONE OF FIVE SIMILAR MAPS ADOPTED BY THE SAID BOARD OF ESTIMATE ON THE 24<sup>TH</sup> DAY OF JULY 1956

DATED: NEW YORK \_\_\_\_\_ 195

*Ruth W. Whaley*  
SECRETARY BOARD OF ESTIMATE

*Julius J. ...*  
PRESIDENT BOROUGHS OF MANHATTAN

*Anthony Donarzo*  
CHIEF ENGINEER



*Drawn - 19*

*Received for filing in Office of the ...*

ACC29543