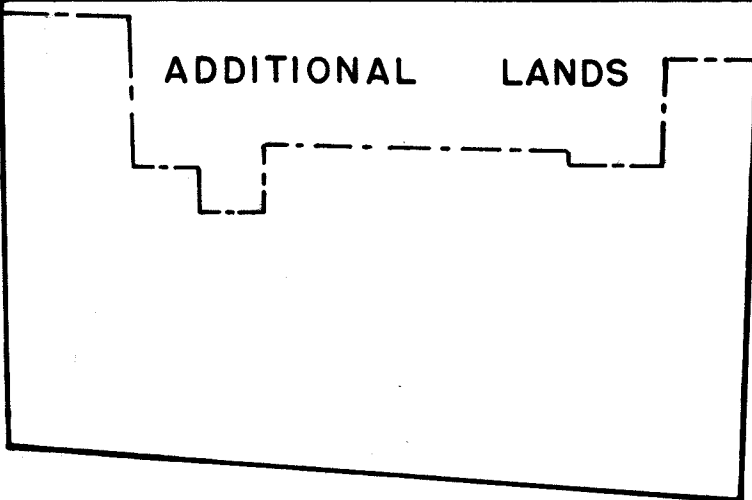
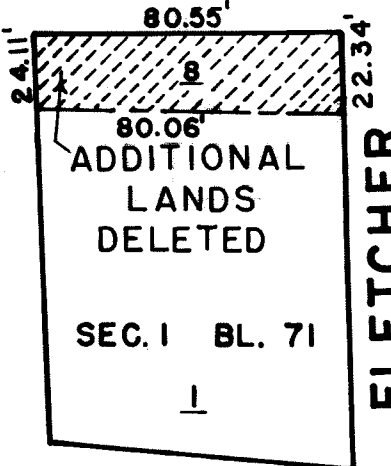
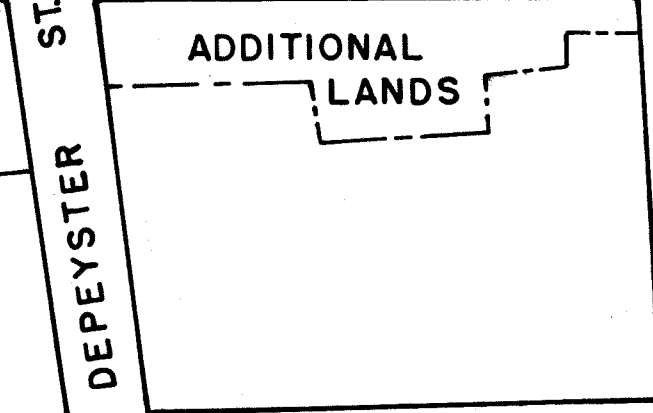


WATER

STREET



FRONT

STREET

I, RUTH W. WHALEY, SECRETARY OF THE BOARD OF ESTIMATE OF THE CITY OF NEW YORK DO HEREBY CERTIFY THAT THIS MAP IS ONE OF FIVE SIMILAR MAPS ADOPTED BY THE SAID BOARD OF ESTIMATE ON THE 23 DAY OF JAN. 1958
 DATED: NEW YORK _____ 195

SECRETARY BOARD OF ESTIMATE

NOTES

- INDICATES LINES HERETOFORE ESTABLISHED.
- - - INDICATES BOUNDARY OF ADDITIONAL LANDS. (ADDITIONAL LAND LINES COINCIDENT WITH STREET LINES ARE DEFINED BY STREET LINES)
- 1 INDICATES LOT NUMBERS.
- ▨ INDICATES ADDITIONAL LANDS TO BE DELETED

CITY OF NEW YORK
 OFFICE OF THE PRESIDENT BOROUGH OF MANHATTAN
 DEPARTMENT OF BOROUGH WORKS
 MAP SHOWING
ADDITIONAL LANDS TO BE DELETED
 FROM THE
ADDITIONAL LANDS MAP
 FOR THE WIDENING OF
WATER STREET
 ON ITS EASTERLY SIDE FROM
 COENTIES SLIP EAST TO FULTON STREET
 AND OF
PEARL STREET
 FROM FULTON STREET TO FRANKFORT STREET

DATED: DEC. 4, 1957

SCALE: 1" = 50'

DRAWN BY: L.D.M.

CHECKED BY: F.S.

F. Sanchez
 SECTION ENGINEER

Edmund J. Karp
 ENGINEER OF PLANNING

E.J. Smith
 ENGINEER OF DESIGN

Thomas J. Donaghy
 PRESIDENT BOROUGH OF MANHATTAN

Anthony Donarigo
 CHIEF ENGINEER

(B)

Drawn 19

ACC. No. 29521