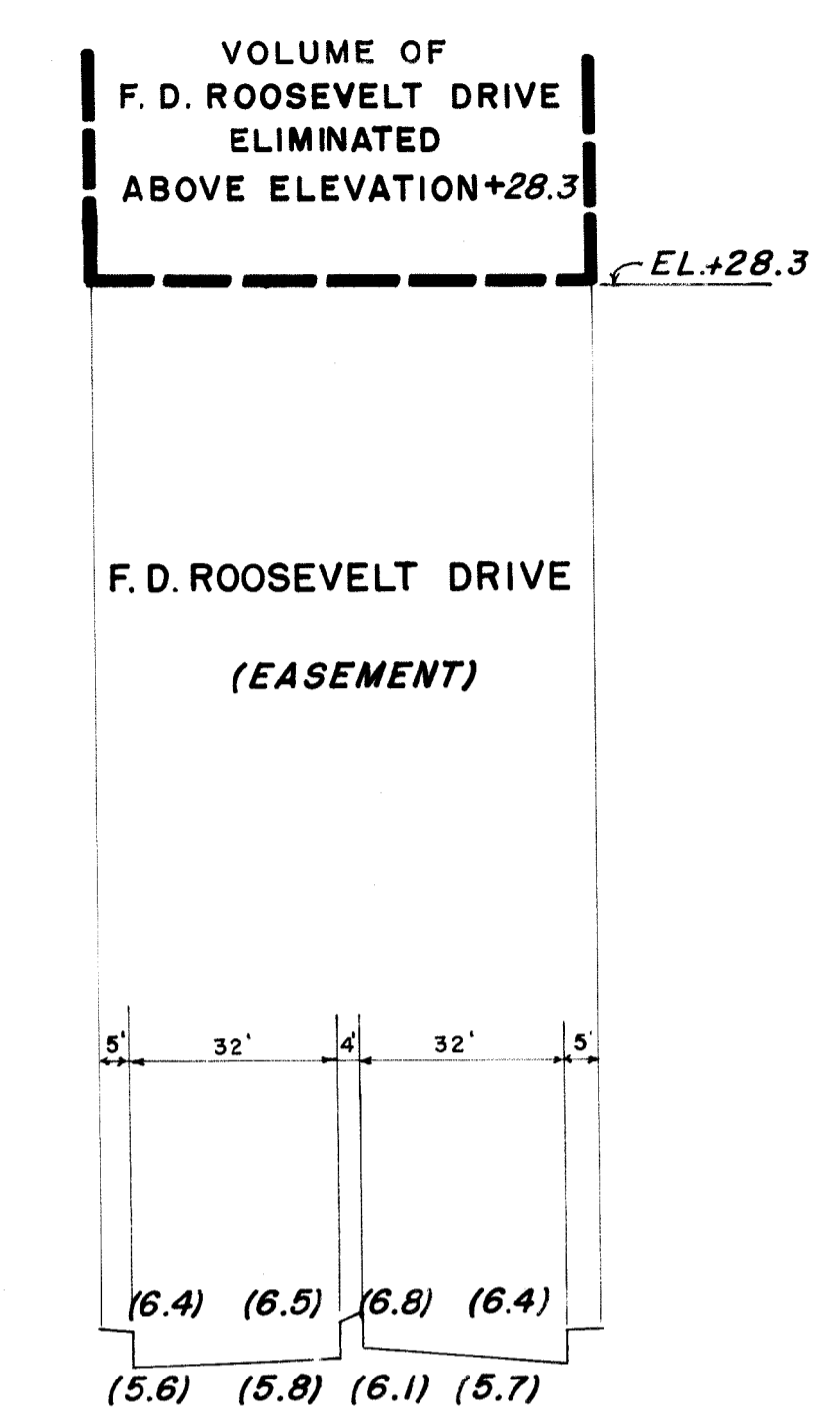


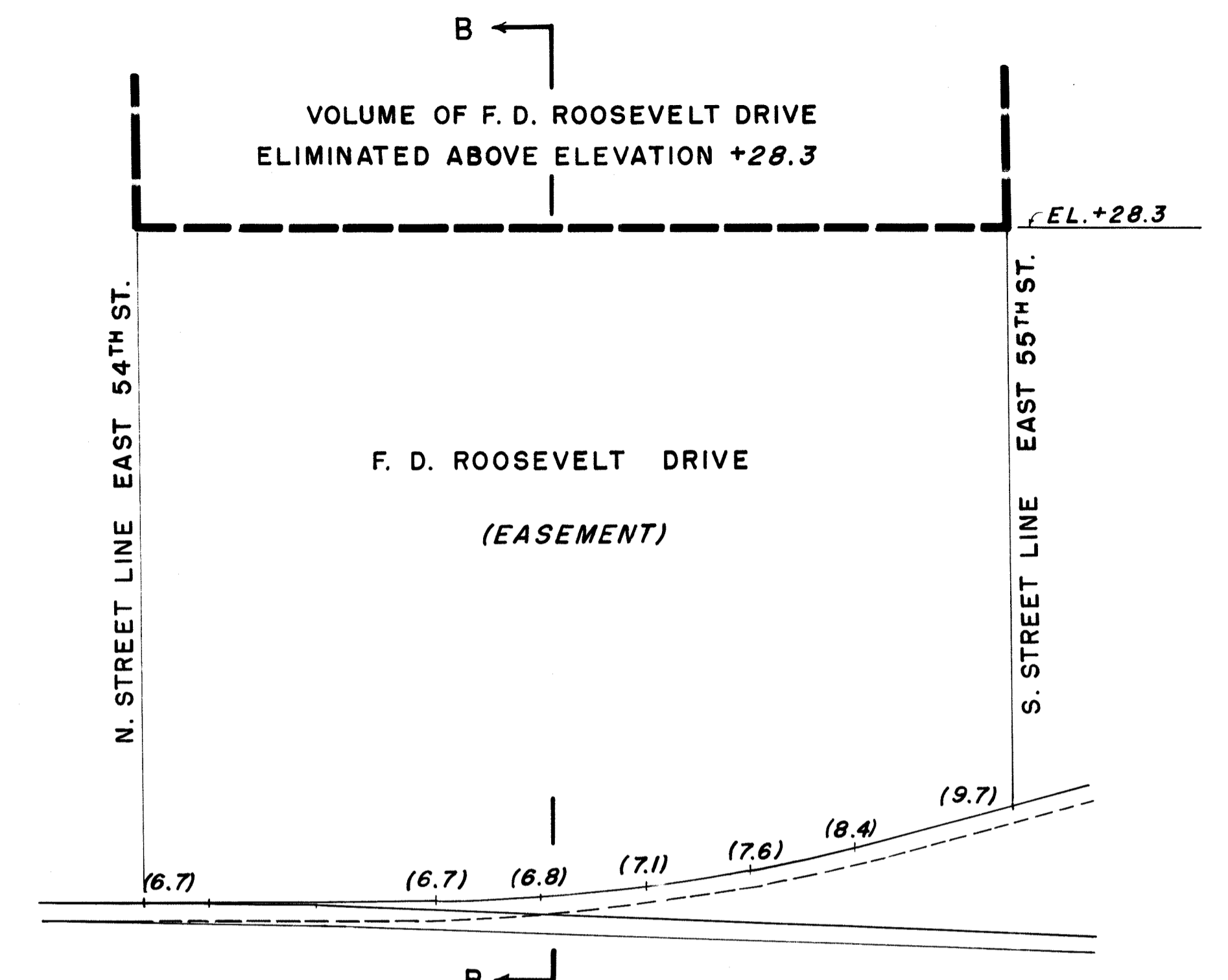
PLAN  
SCALE 1" = 40'

I, RUTH W. WHALEY, SECRETARY OF THE BOARD OF ESTIMATE OF THE CITY OF NEW YORK DO HEREBY CERTIFY THAT THIS MAP IS ONE OF FIVE SIMILAR MAPS ADOPTED BY THE SAID BOARD OF ESTIMATE ON THE 13 DAY OF JUNE 1957  
DATED: NEW YORK JULY 10 1957  
*Ruth W. Whaley*  
SECRETARY BOARD OF ESTIMATE

DRAWN BY: Scherer  
CHECKED BY: H.C.  
*F. Smith* SECTION ENGINEER  
*Edmund J. Karp* ENGINEER OF PLANNING  
*Edward Smith* ENGINEER OF DESIGN



SECTION B-B  
SCALES: HORIZ. - 1" = 30'  
VERT. - 1" = 4'



SECTION A-A  
SCALES: HORIZ. - 1" = 30'  
VERT. - 1" = 4'

- NOTES**
- INDICATES STREET LINE HERETOFORE ESTABLISHED AND HEREBY RETAINED.
  - INDICATES STREET LINE HERETOFORE ESTABLISHED AND HEREBY ELIMINATED.
  - 204.47' INDICATES DIMENSION HERETOFORE ESTABLISHED AND HEREBY RETAINED.
  - 6.00 INDICATES ELEVATION HERETOFORE ESTABLISHED AND HEREBY RETAINED.
  - 32' INDICATES SIDEWALK AND ROADWAY TREATMENT DIMENSION HERETOFORE ESTABLISHED AND RETAINED. ELEVATIONS ARE FOR TOP OF CURB AND ARE REFERRED TO THE BOROUGH WORKS DATUM WHICH IS 2.75 FEET ABOVE THE U.S.C. & G. DATUM AT SANDY HOOK.
  - (6.4) INDICATES EXISTING ELEVATION.

CITY OF NEW YORK  
OFFICE OF THE PRESIDENT BOROUGH OF MANHATTAN  
DEPARTMENT OF BOROUGH WORKS  
MAP SHOWING A CHANGE IN THE STREET SYSTEM  
BY ELIMINATING A VOLUME  
OF  
**FRANKLIN D. ROOSEVELT DRIVE**  
BETWEEN EAST 54<sup>TH</sup> STREET AND EAST 55<sup>TH</sup> STREET  
ABOVE A DESIGNATED LOWER LIMITING PLANE  
DATED: FEB. 5, 1957. SCALES AS SHOWN

*Julius G. ...*  
PRESIDENT BOROUGH OF MANHATTAN  
*Anthony ...*  
CHIEF ENGINEER

(B)

Drawn 19

Office of Borough Works  
Manhattan - 5/10/57

ACC. No. 29483