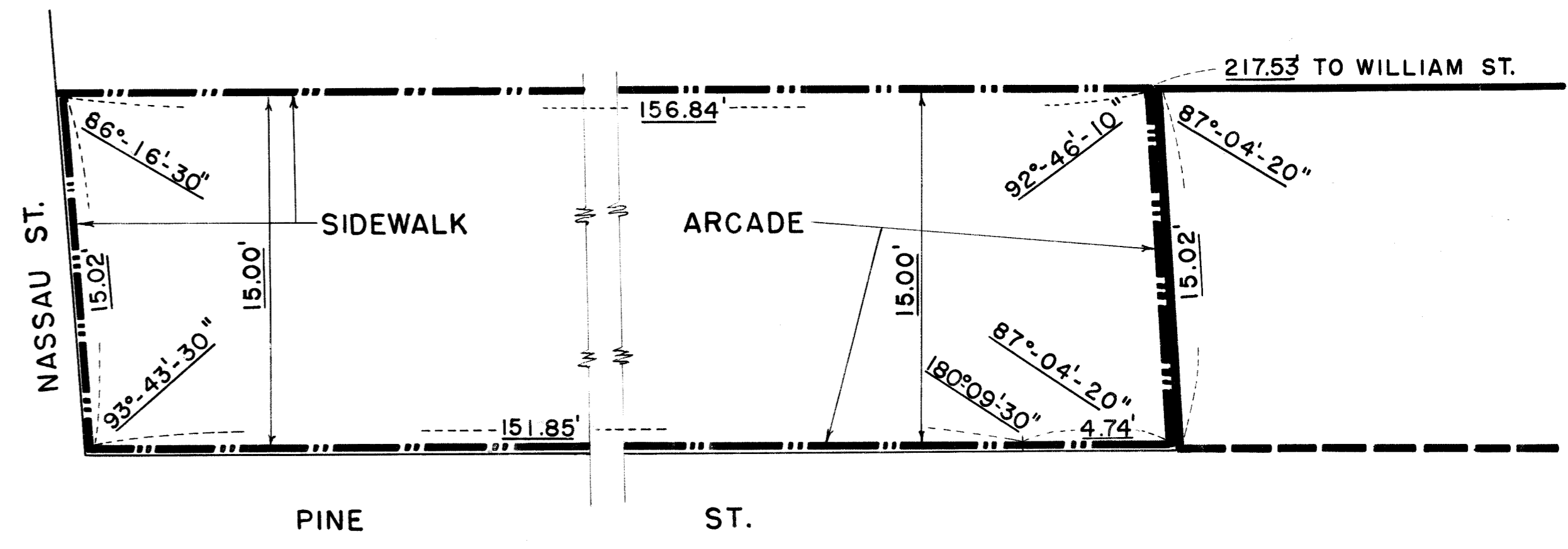


- NOTES**
- INDICATES STREET LINE HERETOFORE ESTABLISHED AND HEREBY RETAINED.
  - - - INDICATES STREET LINE HEREBY ESTABLISHED.
  - INDICATES STREET LINE HERETOFORE ESTABLISHED AND HEREBY ELIMINATED.
  - - - INDICATES ROADWAY AND SIDEWALK TREATMENT HEREBY ESTABLISHED OR HERETOFORE ESTABLISHED AND RETAINED.
  - 125.23' INDICATES DIMENSION HEREBY ESTABLISHED.
  - 30.45' INDICATES ELEVATION HERETOFORE ESTABLISHED AND HEREBY ELIMINATED.
  - 15.75' INDICATES ELEVATION HEREBY ESTABLISHED.
  - 12' INDICATES SIDEWALK AND ROADWAY TREATMENT DIMENSION HEREBY ESTABLISHED.
  - 66' INDICATES TIE-IN DISTANCES TO AN ELEVATION HEREBY ESTABLISHED.
  - 8' INDICATES SIDEWALK DIMENSION HERETOFORE ESTABLISHED AND HEREBY RETAINED.
  - - - INDICATES LINES OF SIDEWALK EASEMENT.
- ELEVATIONS SHOWN ON THIS MAP ARE AT TOP OF CURB AND ARE REFERRED TO THE BOROUGH WORKS DATUM OF THE BOROUGH OF MANHATTAN WHICH IS 2.75 FEET ABOVE MEAN SEA LEVEL AT SANDY HOOK.



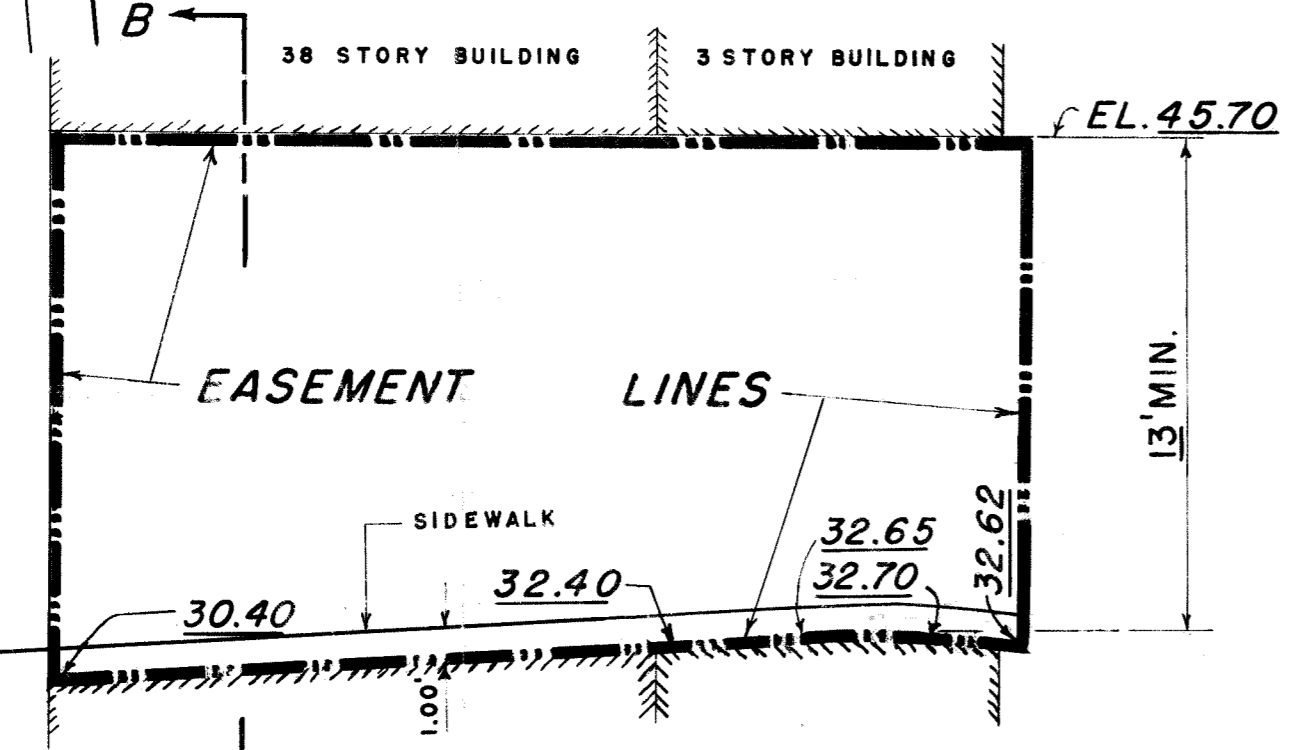
EXAGGERATED SKETCH "C"  
(NOT TO SCALE)

I, RUTH W. WHALEY, SECRETARY OF THE BOARD OF ESTIMATE OF THE CITY OF NEW YORK DO HEREBY CERTIFY THAT THIS MAP IS ONE OF FIVE SIMILAR MAPS ADOPTED BY THE SAID BOARD OF ESTIMATE ON THE 25<sup>TH</sup> DAY OF OCT. 1956.  
DATED: NEW YORK, DECEMBER 6, 1956  
*Ruth W. Whaley*  
SECRETARY BOARD OF ESTIMATE

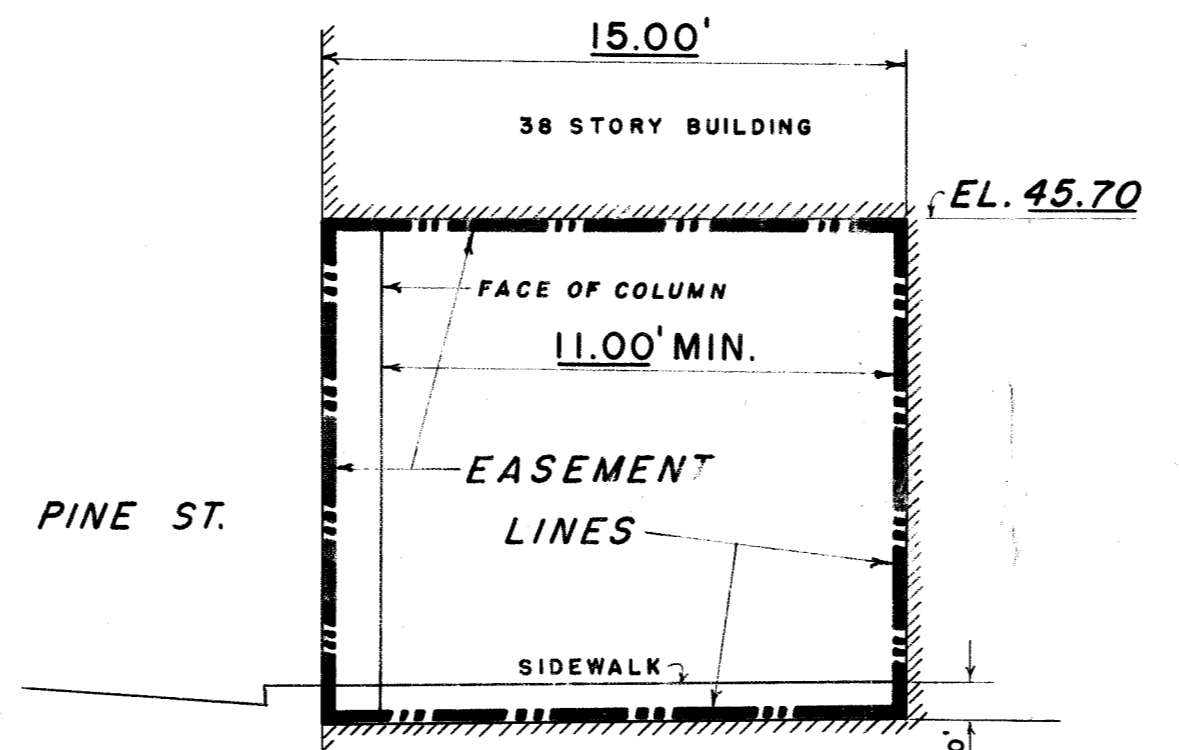
CITY OF NEW YORK  
OFFICE OF THE PRESIDENT, BOROUGH OF MANHATTAN  
DEPARTMENT OF BOROUGH WORKS

MAP SHOWING A CHANGE IN THE STREET SYSTEM BY WIDENING AND ELIMINATING STREETS

IN THE AREA BOUNDED BY  
**LIBERTY STREET, WILLIAM STREET,  
PINE STREET AND NASSAU STREET,**  
BY ESTABLISHING GRADES THEREFOR  
AND BY  
LAYING OUT THE LINES AND LIMITS OF A  
THREE-DIMENSIONAL PERMANENT AND PERPETUAL  
SIDEWALK EASEMENT  
THROUGH PRIVATE PROPERTY, ON THE NORTHERLY SIDE  
OF PINE STREET FROM NASSAU STREET TO A  
POINT APPROXIMATELY 157 FEET EASTERLY THEREOF



SECTION A-A  
SCALES: HORIZ. 1" = 30'  
VERT. 1" = 5'



SECTION B-B  
SCALE: 1" = 5'

DATED: APRIL 16, 1956. SCALE: 1" = 30'

*Edmund J. Karp*  
ENGINEER OF PLANNING

*Edmund Smith*  
ENGINEER OF DESIGN

*Arthur J. ...*  
PRESIDENT, BOROUGH OF MANHATTAN

*Arthur J. ...*  
CHIEF ENGINEER