

NOTES

LINES AND DIMENSIONS PREVIOUSLY ESTABLISHED AND HEREBY RETAINED ARE SHOWN BY FULL BLACK LINES AND BLACK FIGURES.
 LINES AND DIMENSIONS HEREBY ESTABLISHED ARE SHOWN BY FULL RED LINES AND RED FIGURES.
 LINES PREVIOUSLY ESTABLISHED AND HEREBY ELIMINATED ARE SHOWN BY DASHED RED LINES.
 DIMENSIONS PREVIOUSLY ESTABLISHED AND HEREBY ELIMINATED ARE SHOWN BY BLACK FIGURES CROSSED BY A BLACK LINE.
 ELEVATIONS PREVIOUSLY ESTABLISHED AND HEREBY RETAINED ARE SHOWN BY VERTICAL BLACK FIGURES AND WHERE HEREBY DISCONTINUED ARE CROSSED BY A BLACK LINE.
 EXISTING ELEVATIONS ARE SHOWN BY VERTICAL BLACK FIGURES AND ARE ENCLOSED IN PARENTHESIS AND WHERE HEREBY DISCONTINUED ARE CROSSED BY A BLACK LINE.
 ELEVATIONS HEREBY ESTABLISHED ARE SHOWN BY VERTICAL RED FIGURES.
 ALL ELEVATIONS SHOWN ON THIS MAP ARE FOR TOP OF CURB AND ARE REFERRED TO THE BOROUGH WORKS DATUM OF THE BOROUGH OF MANHATTAN WHICH IS 2.750 FEET ABOVE MEAN SEA LEVEL AT SANDY HOOK.
 UNLESS OTHERWISE SHOWN ALL RADII AT CURB INTERSECTIONS ARE 12.00 FT.

I, RUTH W. WHALEY, SECRETARY OF THE BOARD OF ESTIMATE OF THE CITY OF NEW YORK DO HEREBY CERTIFY THAT THIS MAP IS ONE OF FIVE SIMILAR MAPS ADOPTED BY THE SAID BOARD OF ESTIMATE ON THE 25TH DAY OF JUNE 1953.
 DATED NEW YORK August 6, 1953
Ruth W. Whaley
 SECRETARY BOARD OF ESTIMATE

CITY OF NEW YORK
 OFFICE OF THE PRESIDENT BOROUGH OF MANHATTAN
 DEPARTMENT OF BOROUGH WORKS

MAP SHOWING A CHANGE IN THE STREET SYSTEM WITHIN THE AREA BOUNDED BY WEST 139TH ST. WEST 143RD ST. LENOX AVE. FIFTH AVE. AND HARLEM RIVER DRIVE BY LAYING OUT, WIDENING AND ELIMINATING STREET LINES THEREIN AND BY MODIFYING AND ESTABLISHING GRADES THEREFOR IN CONNECTION WITH THE SITE FOR THE NORTH HARLEM SLUM CLEARANCE AREA

DATED: NOV. 10, 1952

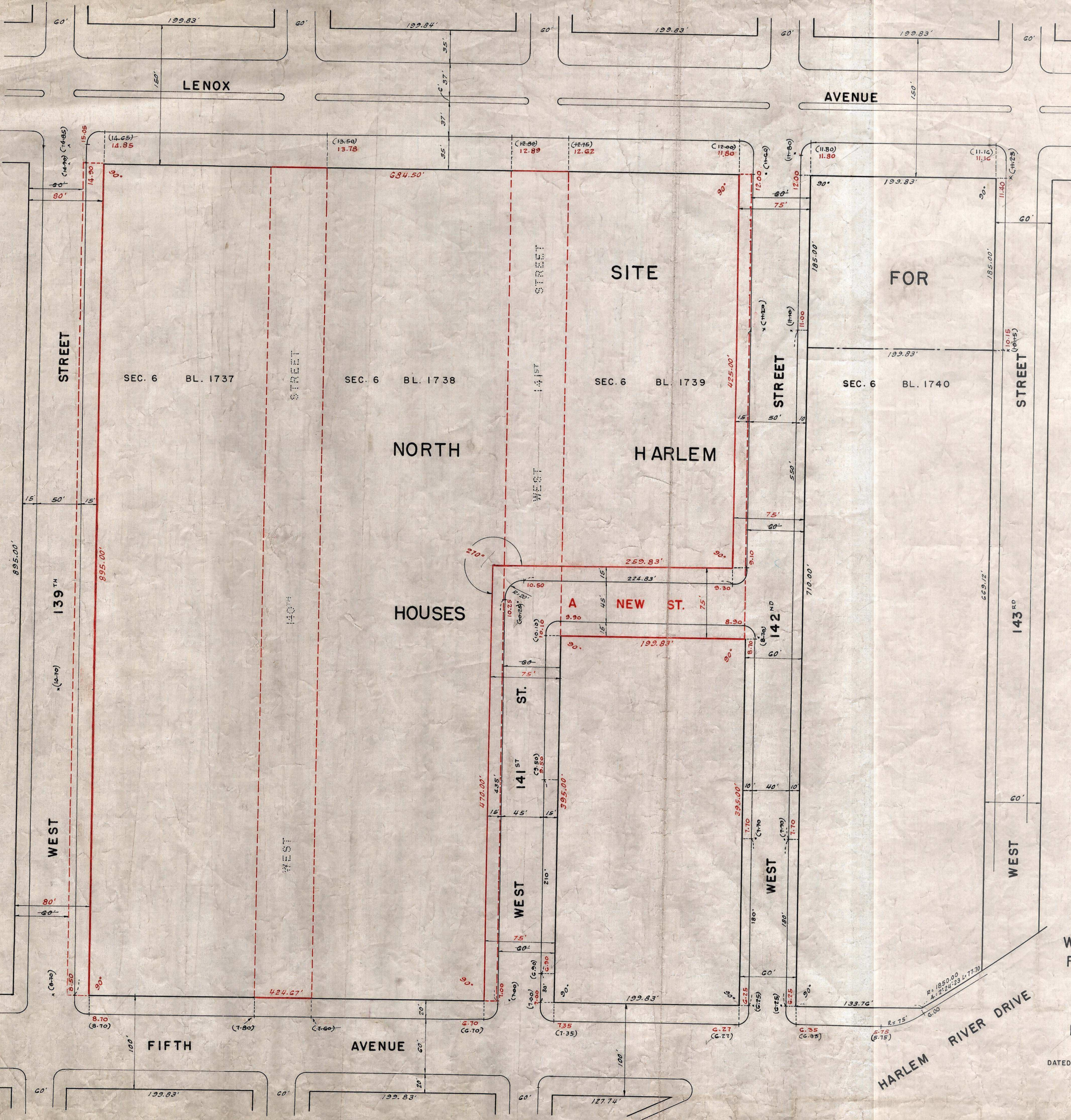
SCALE: 1"=50'

Robert F. Wagner
 PRESIDENT, BOROUGH OF MANHATTAN

Anthony J. Donato
 CHIEF ENGINEER

C

Acc. No. 29237



DRAWN BY: G.L.
 CHECKED BY: W.M.
William H. Moffatt
 SECTION ENGINEER
John Collins
 ENGINEER OF DESIGN

Drawer 39