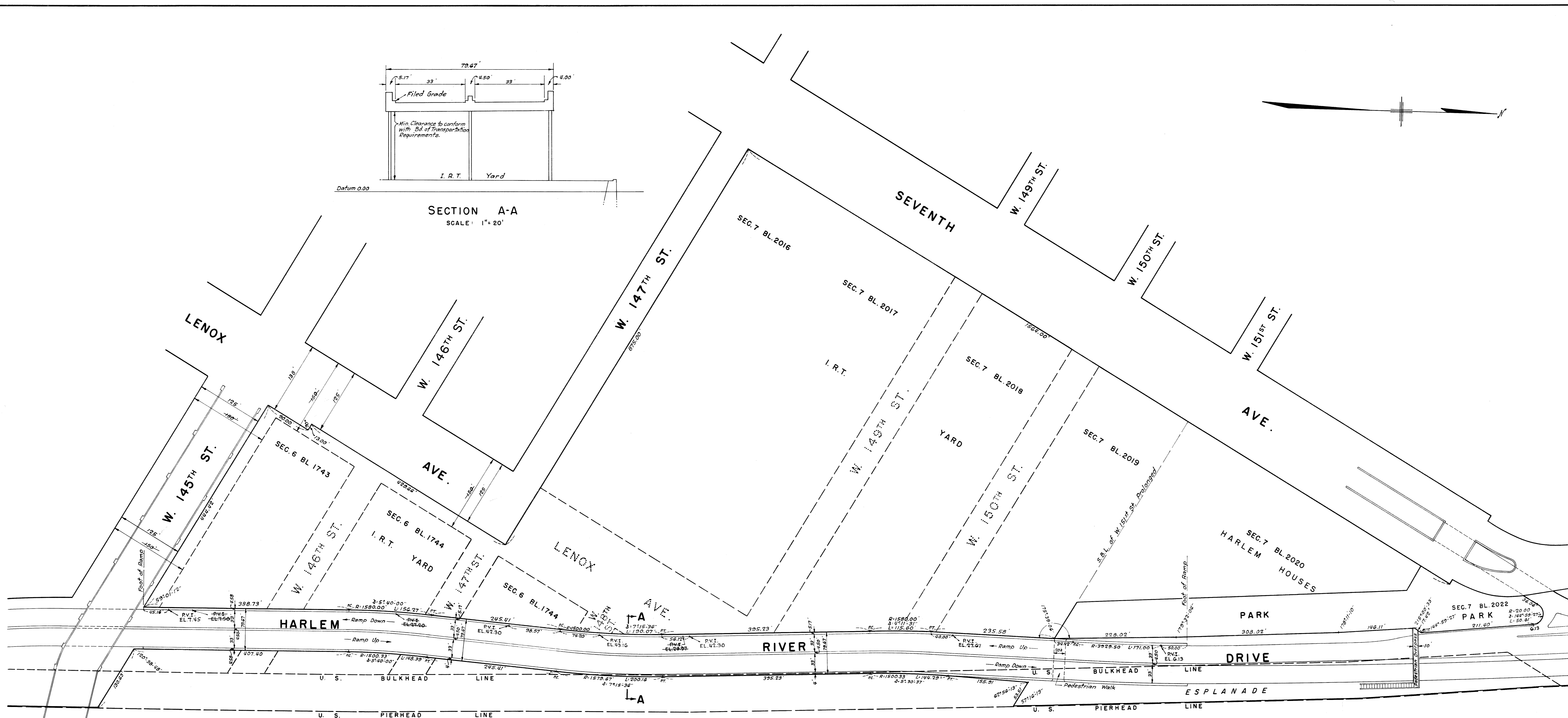
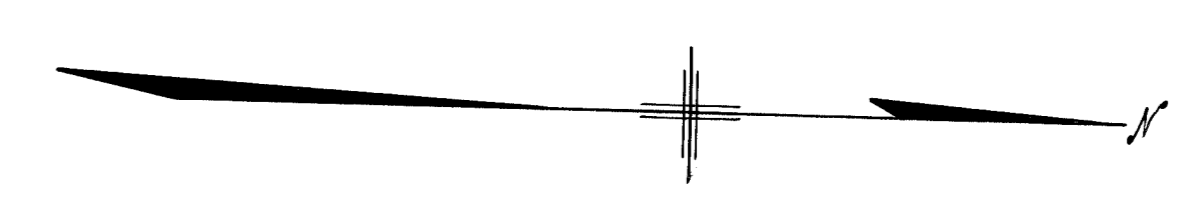


SECTION A-A
SCALE: 1" = 20'



NOTES

1. LINES AND DIMENSIONS PREVIOUSLY ESTABLISHED AND HEREBY RETAINED ARE SHOWN BY FULL BLACK LINES AND BLACK FIGURES. LINES AND DIMENSIONS HEREBY ESTABLISHED ARE SHOWN BY FULL RED LINES AND RED FIGURES.

2. LINES HEREBY ELIMINATED ARE SHOWN BY DASHED RED LINES. GRADES HEREBY ESTABLISHED ARE SHOWN BY VERTICAL RED FIGURES.

3. GRADES PREVIOUSLY ESTABLISHED AND HEREBY RETAINED ARE SHOWN BY VERTICAL BLACK FIGURES.

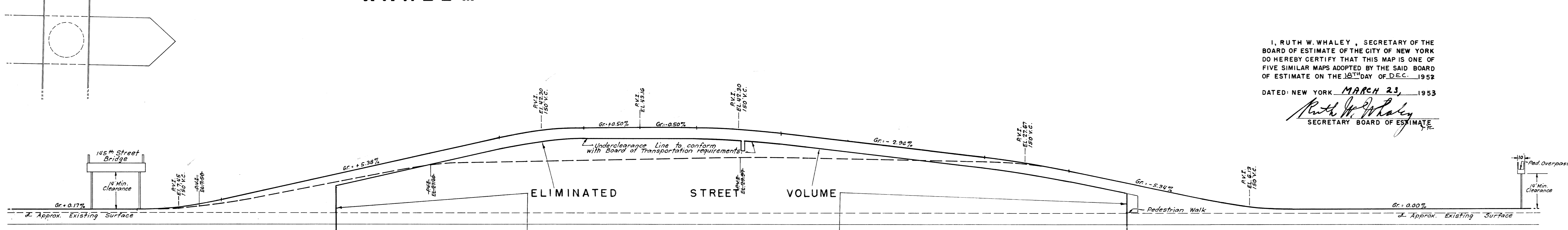
4. GRADES PREVIOUSLY ESTABLISHED AND HEREBY ABOLISHED ARE SHOWN BY VERTICAL BLACK FIGURES CROSSED BY A BLACK LINE.

5. ELEVATIONS SHOWN ON THIS MAP ARE FOR TOP OF CURB AND ARE REFERRED TO THE BOROUGH WORKS DATUM OF THE BOROUGH OF MANHATTAN WHICH IS 2750 FEET ABOVE MEAN SEA LEVEL AT SANDY HOOK.

CITY OF NEW YORK
OFFICE OF THE PRESIDENT BOROUGH OF MANHATTAN
DEPARTMENT OF BOROUGH WORKS

MAP SHOWING A CHANGE IN THE STREET SYSTEM
BY CHANGING THE GRADES OF
HARLEM RIVER DRIVE
BETWEEN
W. 145TH STREET AND W. 150TH STREET,
BY ELIMINATING THE LINES OF
**W. 146TH ST., W. 147TH ST., W. 148TH ST.,
W. 149TH ST. AND W. 150TH ST.**
BETWEEN HARLEM RIVER DRIVE AND SEVENTH AVE.,
AND
LENOX AVENUE
BETWEEN W. 147TH ST. AND HARLEM RIVER DRIVE.
BY CHANGING THE LINES OF
LENOX AVENUE
ON ITS EASTERLY SIDE
BETWEEN W. 145TH ST. AND W. 147TH ST.,
AND
W. 145TH STREET
ON ITS NORTHERLY SIDE
BETWEEN HARLEM RIVER DRIVE AND LENOX AVE.

I, RUTH W. WHALEY, SECRETARY OF THE BOARD OF ESTIMATE OF THE CITY OF NEW YORK DO HEREBY CERTIFY THAT THIS MAP IS ONE OF FIVE SIMILAR MAPS ADOPTED BY THE SAID BOARD OF ESTIMATE ON THE 18TH DAY OF DEC., 1952
DATED NEW YORK MARCH 23, 1953
Ruth W. Whaley
SECRETARY BOARD OF ESTIMATE



PROFILE
SCALE: HOR. 1" = 80'
VERT. 1" = 20'

DRAWN BY: Sanchez
CHECKED BY: [Signature]
SECTION ENGINEER: [Signature]
ENGINEER OF DESIGN: [Signature]

DATED: APRIL 11, 1949
SCALE: 1" = 80'
[Signature]
PRESIDENT BOROUGH OF MANHATTAN
[Signature]
CHIEF ENGINEER
[Signature]
CHIEF ENGINEER OF DESIGN