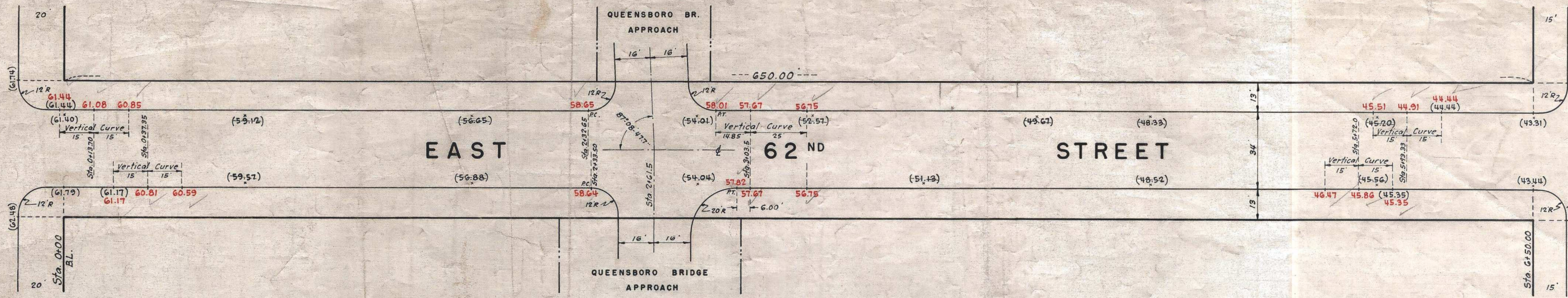


AVE.

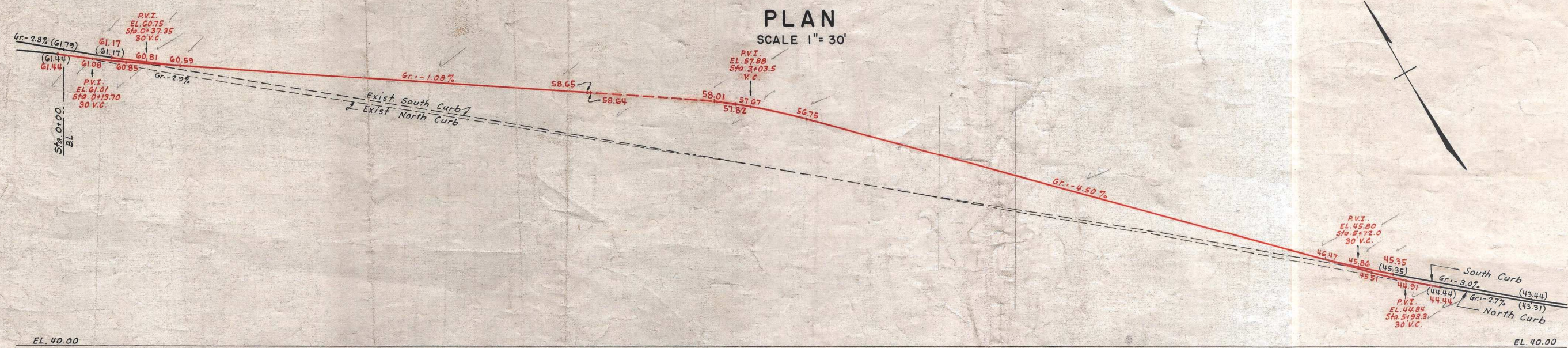
SECOND

AVE.

FIRST



PLAN SCALE 1" = 30'



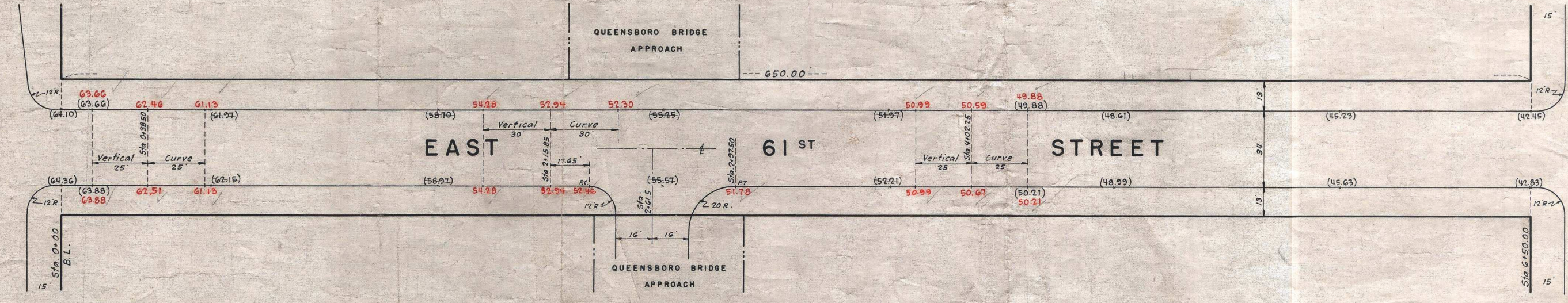
PROFILE SCALES: HOR. 1" = 30' VERT. 1" = 5'

AVE.

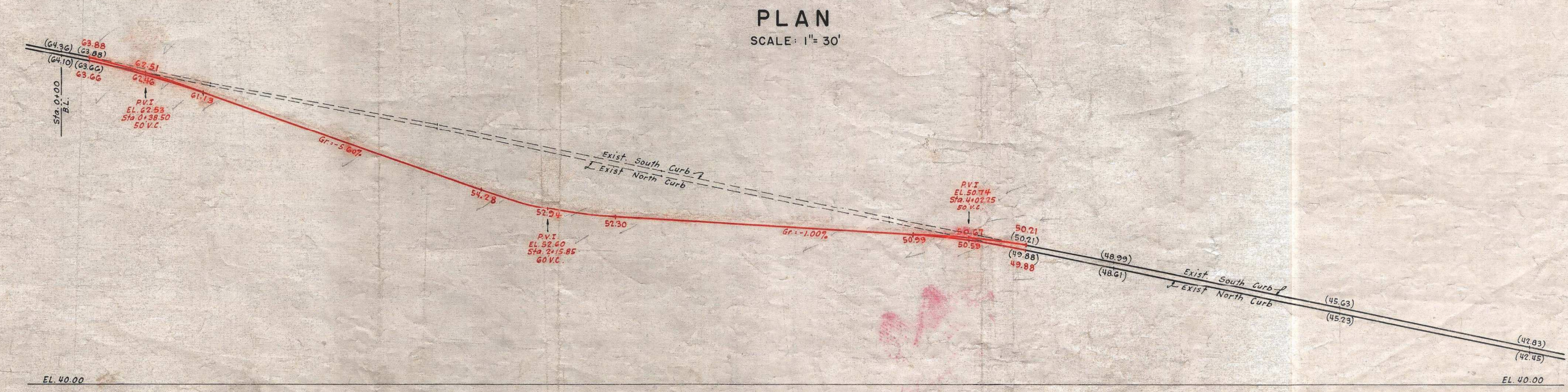
SECOND

AVE.

FIRST



PLAN SCALE 1" = 30'



PROFILE SCALES: HOR. 1" = 30' VERT. 1" = 5'

I, RUTH W. WHALEY, SECRETARY OF THE BOARD OF ESTIMATE OF THE CITY OF NEW YORK DO HEREBY CERTIFY THAT THIS MAP IS ONE OF FIVE SIMILAR MAPS ADOPTED BY THE SAID BOARD OF ESTIMATE ON THE 9TH DAY OF OCT. 1952 DATED: NEW YORK Nov. 24 1952

Ruth W. Whaley
SECRETARY BOARD OF ESTIMATE

NOTES

LINES AND DIMENSIONS PREVIOUSLY ESTABLISHED AND HEREBY RETAINED ARE SHOWN BY FULL BLACK LINES AND BLACK FIGURES.

GRADES HEREBY ESTABLISHED ARE SHOWN BY VERTICAL RED FIGURES.

GRADES PREVIOUSLY ESTABLISHED AND HEREBY ABOLISHED ARE SHOWN BY VERTICAL BLACK FIGURES CROSSED BY A BLACK LINE.

EXISTING SURFACE ELEVATIONS ARE SHOWN BY VERTICAL BLACK FIGURES ENCLOSED IN PARENTHESIS AND WHERE HEREBY DISCONTINUED ARE CROSSED BY A BLACK LINE.

ELEVATIONS SHOWN ON THIS MAP ARE FOR TOP OF CURB, AND ARE REFERRED TO THE BOROUGH WORKS DATUM OF THE BOROUGH OF MANHATTAN WHICH IS 2.750 FEET ABOVE MEAN SEA LEVEL AT SANDY HOOK.

CITY OF NEW YORK
OFFICE OF THE PRESIDENT BOROUGH OF MANHATTAN
DEPARTMENT OF BOROUGH WORKS

MAP SHOWING A CHANGE OF GRADE
ON
EAST 61ST STREET
AND
EAST 62ND STREET
BETWEEN
FIRST AVENUE AND SECOND AVENUE

DATED: JAN. 18, 1952

SCALE AS SHOWN

DRAWN BY: Sanchez
CHECKED BY: S.L.
William J. Hoff
SECTION ENGINEER
J. D. Rollins
ENGINEER OF DESIGN

Robert F. Wagner, Jr.
PRESIDENT BOROUGH OF MANHATTAN
Anthony Donato
CHIEF ENGINEER

Drawer 39

ACC. NO. 29200 (6)