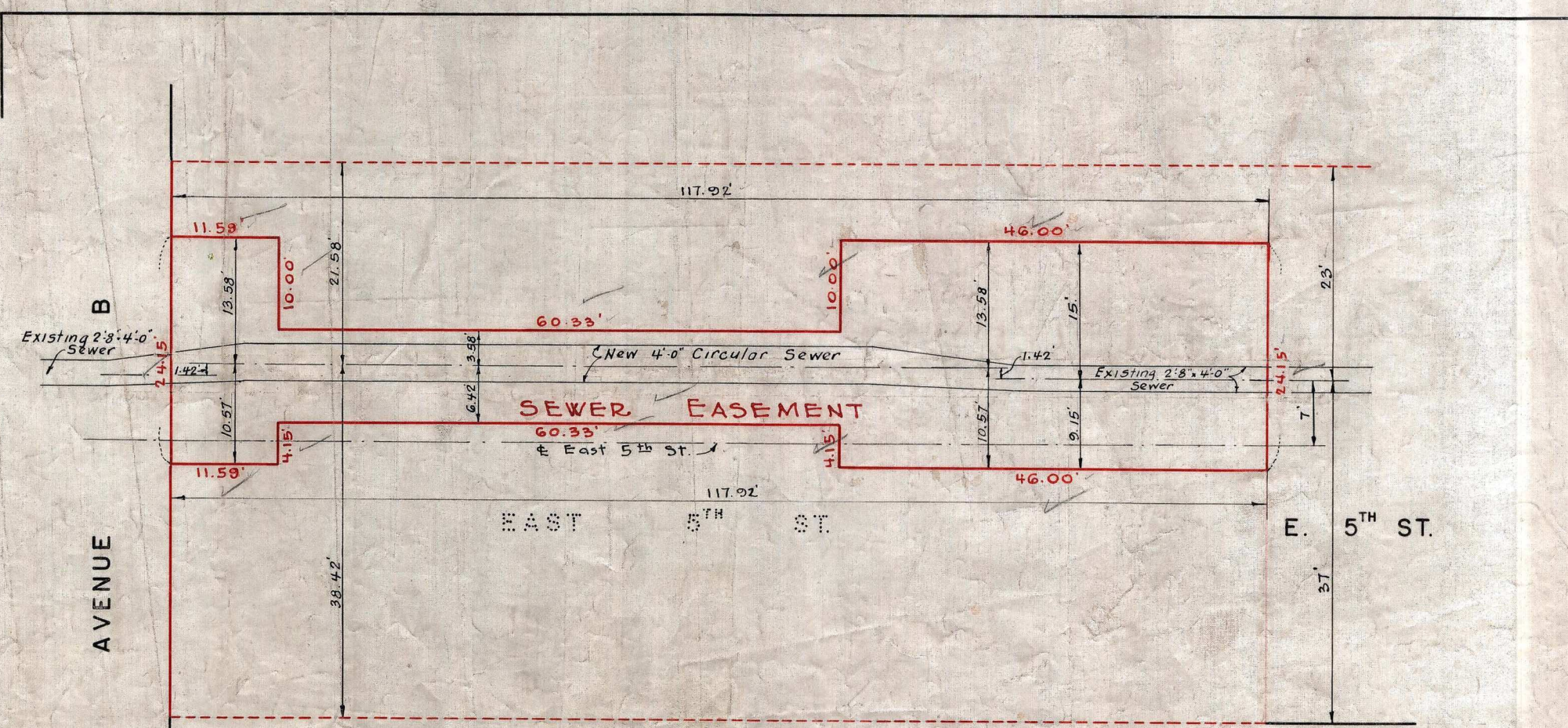


SECTION THRU SEWER EASEMENT
AT 10' WIDTH
SCALE 1/4" = 1'-0"

I, RUTH W. WHALEY, SECRETARY OF THE BOARD OF ESTIMATE OF THE CITY OF NEW YORK DO HEREBY CERTIFY THAT THIS MAP IS ONE OF FIVE SIMILAR MAPS ADOPTED BY THE SAID BOARD OF ESTIMATE ON THE 20TH DAY OF MARCH 1952
DATED NEW YORK April 21 1952
Ruth W. Whaley
SECRETARY, BOARD OF ESTIMATE

LEGEND
LINES AND DIMENSIONS PREVIOUSLY ESTABLISHED AND HEREBY RETAINED ARE SHOWN BY FULL BLACK LINES AND BLACK FIGURES.
LINES AND DIMENSIONS HEREBY ESTABLISHED ARE SHOWN BY FULL RED LINES AND RED FIGURES.
LINES PREVIOUSLY ESTABLISHED AND HEREBY ELIMINATED ARE SHOWN BY DASHED RED LINES.
GRADES HEREBY ESTABLISHED ARE SHOWN BY VERTICAL RED FIGURES.
EXISTING SURFACE ELEVATIONS ARE SHOWN BY VERTICAL BLACK FIGURES ENCLOSED IN PARENTHESES.
ELEVATIONS SHOWN ON THIS MAP ARE AT TOP OF CURB AND ARE REFERRED TO THE BOROUGH WORKS DATUM OF THE BOROUGH OF MANHATTAN WHICH IS 2.75 FEET ABOVE MEAN SEA LEVEL AT SANDY HOOK.

CITY OF NEW YORK
OFFICE OF THE PRESIDENT BOROUGH OF MANHATTAN
DEPARTMENT OF BOROUGH WORKS
MAP SHOWING A CHANGE IN THE STREET SYSTEM
BY ELIMINATING AND CHANGING THE LINES OF
EAST 5TH STREET
FROM AVENUE B TO A POINT 243 FEET EASTERLY THEREFROM
AND BY ESTABLISHING GRADES THEREFOR
DATED: SEPT. 5, 1951 SCALE 1" = 40'



ENLARGED PLAN OF SEWER EASEMENT
SCALE 1" = 10'

DRAWN BY *H. Kulp*
CHECKED BY *Handy*
William J. Hoff
SECTION ENGINEER
L. O. Collin
ENGINEER OF DESIGN

Robert F. Wagner
PRESIDENT, BOROUGH OF MANHATTAN
Anthony Donarzo
CHIEF ENGINEER