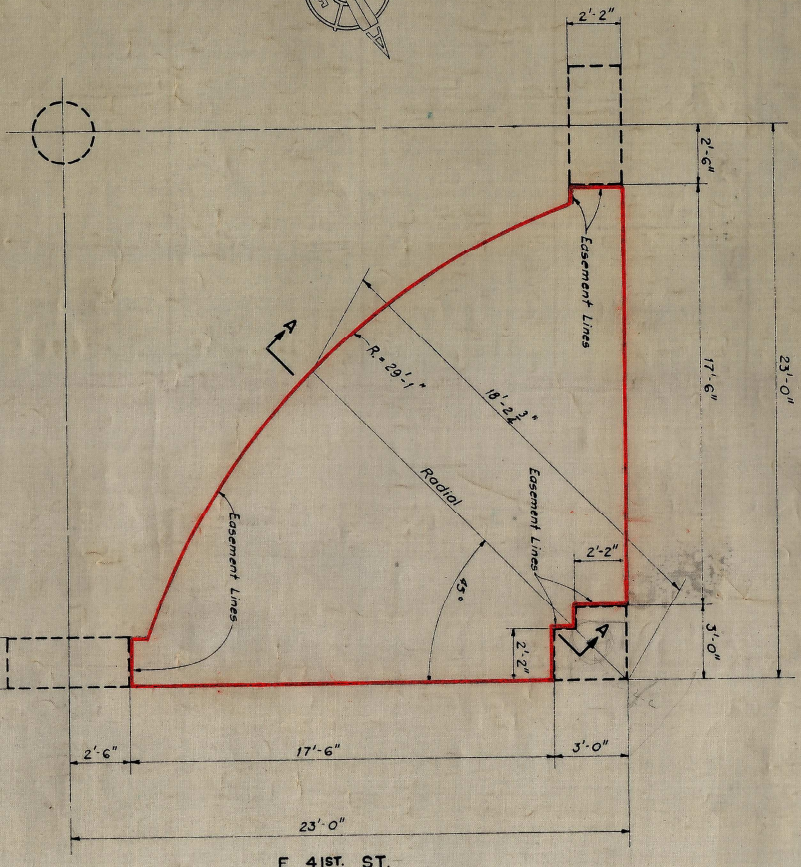


FIRST AVE.

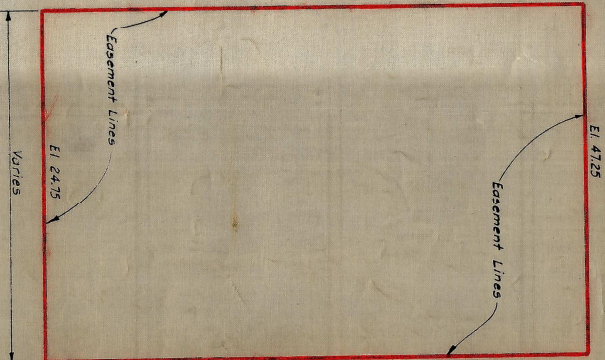
23'-0"



PLAN

ELEVATIONS SHOWN ON THIS MAP ARE REFERRED TO THE BOROUGH WORKS DATUM OF THE BOROUGH OF MANHATTAN WHICH IS 2.75 FEET ABOVE MEAN SEA LEVEL AT SANDY HOOK.

E. 4th ST.



SECTION A-A

William G. Fowler
 Acting
 CHIEF SECRETARY OF ESTIMATE
 BOARD OF ESTIMATE OF THE CITY OF NEW YORK
 DO HEREBY CERTIFY THAT THIS MAP IS ONE OF
 FIVE SIMILAR MAPS ADOPTED BY THE SAID BOARD
 OF ESTIMATE ON THE 17 DAY OF October 1980
 DATED: NEW YORK

William G. Fowler
 CHIEF SECRETARY OF ESTIMATE

LAYING OUT LINES AND LIMITS OF
 THREE-DIMENSIONAL PERMANENT AND PERPETUAL
 SIDEWALK EASEMENT
 THROUGH PRIVATE PROPERTY AT
 THE SOUTHEAST CORNER OF 1ST AVE. AND 41ST ST.

DATED DEC. 4, 1947

SCALE: 1/4" = 1 FT.

CITY OF NEW YORK
 OFFICE OF THE PRESIDENT
 DEPARTMENT OF BOROUGH WORKS

MAP

Luigi Starni
 PRESIDENT BOROUGH OF MANHATTAN

Robert C. Lee
 CHIEF ENGINEER OF DESIGN

Nicholas Lee
 CHIEF ENGINEER

PREPARED BY
 ANDREWS & CLARK TOGETHER WITH
 PARSONS, BRINCKERHOFF, HOGAN & MACDONALD
 NEW YORK