

ENGINEER OF DESIGN
John J. Ryan

SECTION ENGINEER
John J. Ryan

CHECKED BY S.M.
DRAWN BY L.F.D.

CHIEF ENGINEER OF DESIGN
John J. Ryan

PRESIDENT BOROUGH OF MANHATTAN
John J. Ryan

DATED DEC. 2, 1948
SCALE AS SHOWN

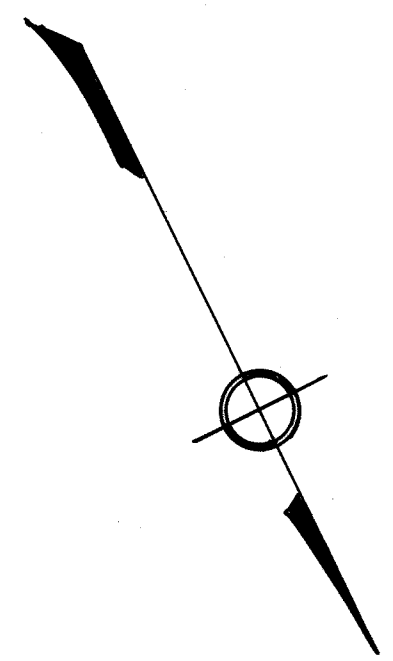
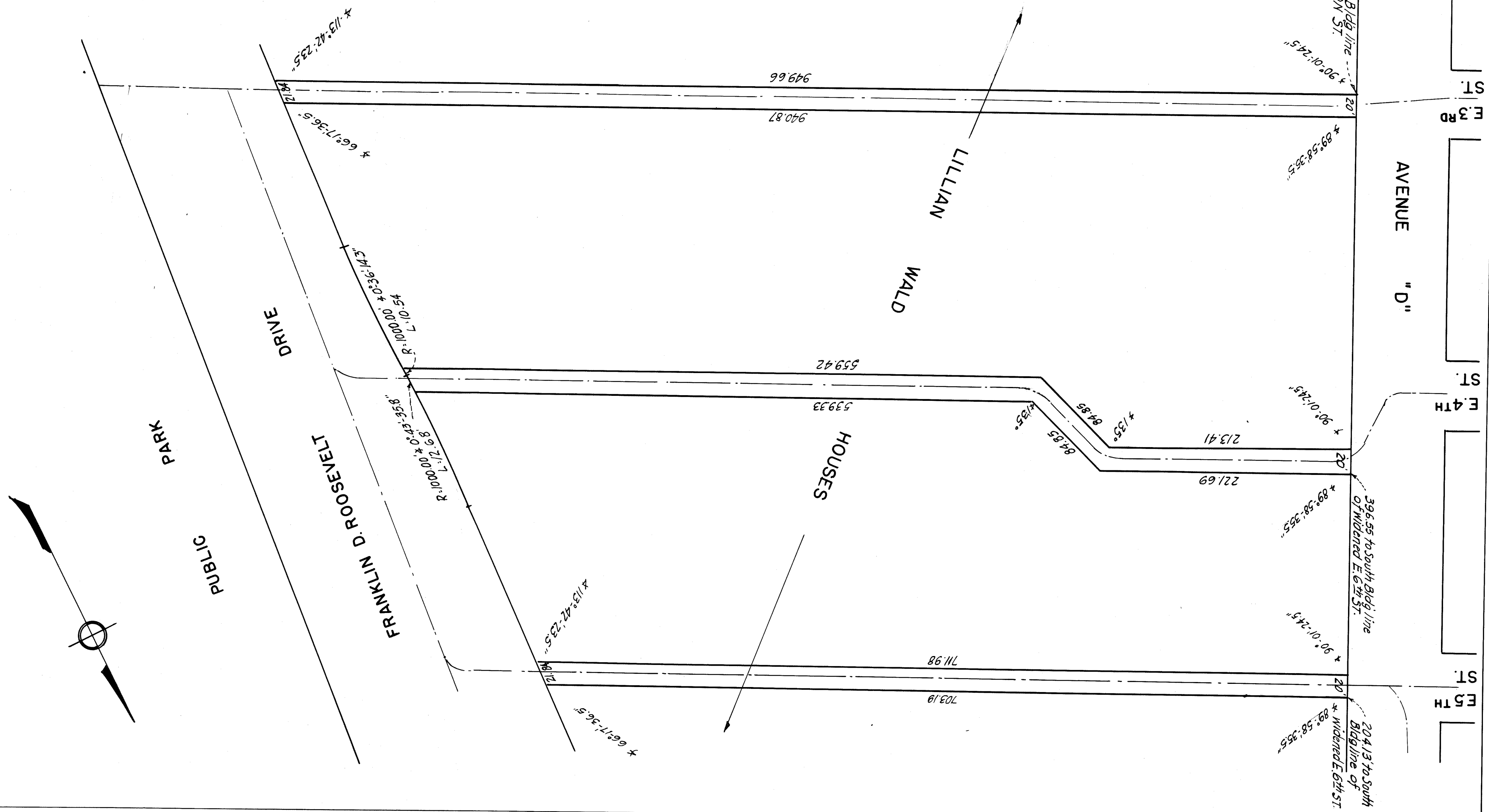
SECRETARY BOARD OF ESTIMATE
Mark W. W. W. W.

NOVEMBER 8, 1954
DATED: NEW YORK

BOARD OF ESTIMATE OF THE CITY OF NEW YORK
DO HEREBY CERTIFY THAT THIS MAP IS ONE OF
FIVE SIMILAR MAPS ADOPTED BY THE SAID BOARD
OF ESTIMATE ON THE 17th DAY OF *October*, 1949

MAP OR PLAN
SHOWING THE PERMANENT AND PERPETUAL
EASEMENT FOR SEWER PURPOSES
RETAINED BY THE CITY OF NEW YORK,
THROUGH THE LILLIAN WALD HOUSES
SITE, IN THE BED OF FORMER EAST 3RD ST,
EAST 4TH ST, AND EAST 5TH ST.
OFFICE OF THE PRESIDENT
BOROUGH OF MANHATTAN
DEPARTMENT OF BOROUGH WORKS
CITY OF NEW YORK

SCALE 1"=60'



(B)