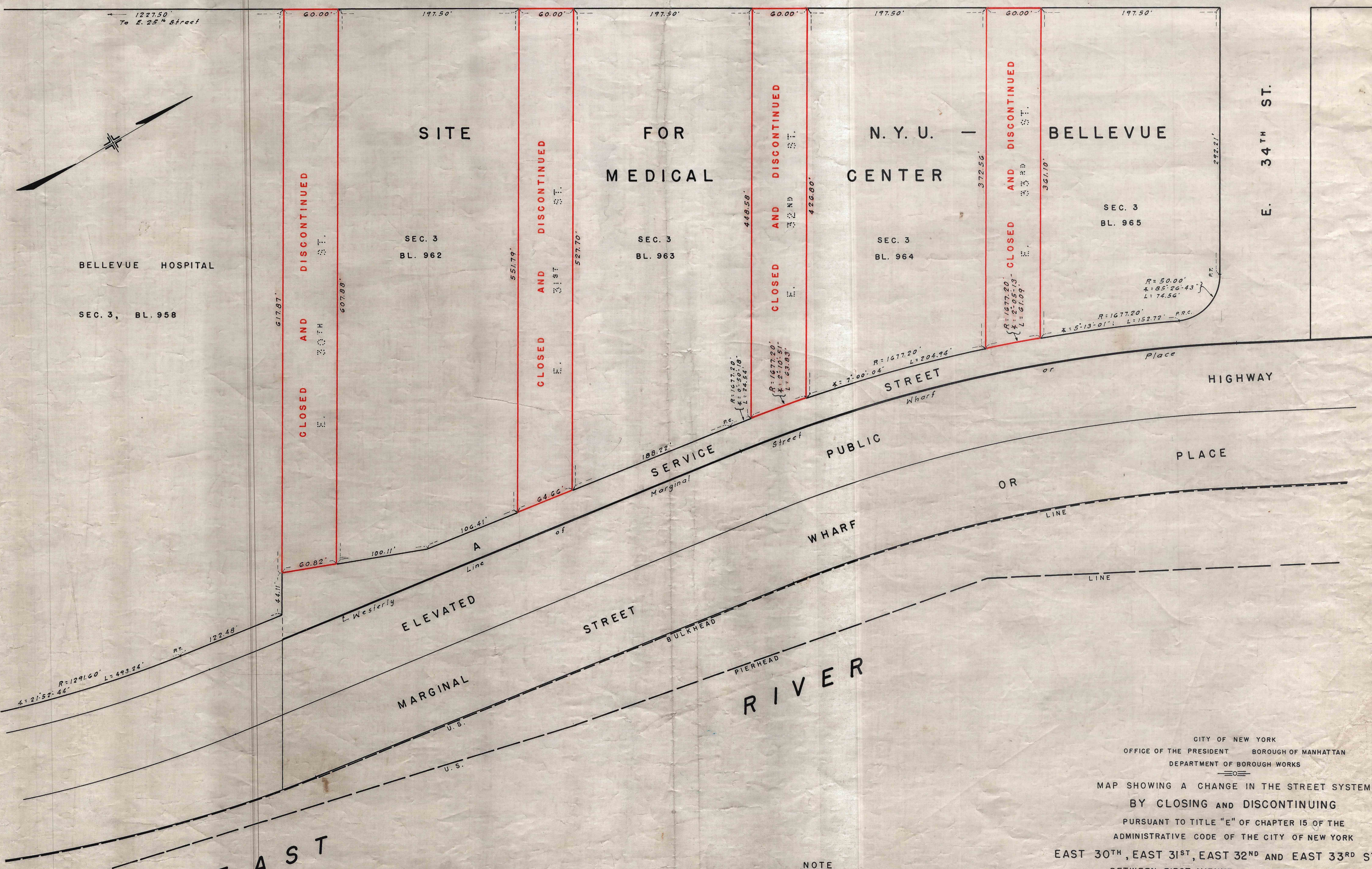


DESIGNED BY: H. WEHSMAN
 DRAWN BY: H. WEHSMAN
 CHECKED BY: E.S.
 SECTION ENGINEER
 DIVISION OF RECORDS AND PLANS
 BUREAU OF PUBLIC WORKS
 CITY OF NEW YORK

FIRST AVENUE



CITY OF NEW YORK
 OFFICE OF THE PRESIDENT BOROUGH OF MANHATTAN
 DEPARTMENT OF BOROUGH WORKS
 MAP SHOWING A CHANGE IN THE STREET SYSTEM
 BY CLOSING AND DISCONTINUING
 PURSUANT TO TITLE "E" OF CHAPTER 15 OF THE
 ADMINISTRATIVE CODE OF THE CITY OF NEW YORK
 EAST 30TH, EAST 31ST, EAST 32ND AND EAST 33RD STREETS
 BETWEEN FIRST AVENUE AND A SERVICE STREET

NOTE
 STREETS TO BE CLOSED AND DISCONTINUED ARE
 ENCLOSED IN SOLID RED LINES.

I, HILDA G. SCHWARTZ, SECRETARY OF THE
 BOARD OF ESTIMATE OF THE CITY OF NEW YORK
 DO HEREBY CERTIFY THAT THIS MAP IS ONE OF
 FIVE SIMILAR MAPS ADOPTED BY THE SAID BOARD
 OF ESTIMATE ON THE 23RD DAY OF JULY, 1949
 DATED: NEW YORK, November 14, 1949
 Hilda G. Schwartz
 SECRETARY BOARD OF ESTIMATE

DATED: MAY 20, 1949 SCALE: 1" = 50'
 Hugo E. Hays
 PRESIDENT BOROUGH OF MANHATTAN
 Michael K. ...
 CHIEF ENGINEER
 ...
 CHIEF ENGINEER OF DESIGN

DRAWN BY: H. Wehsman
 CHECKED BY: E.S.
 SECTION ENGINEER
 H. Wehsman
 ENGINEER OF DESIGN