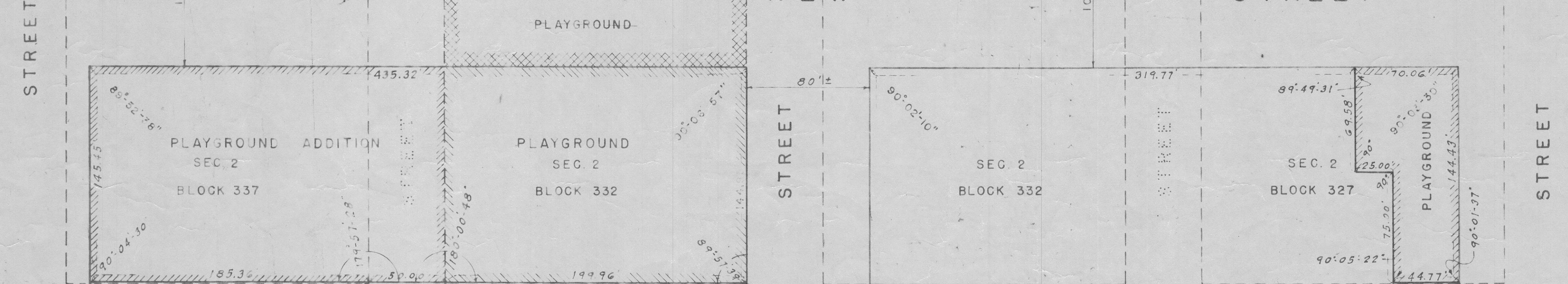


DELANCEY STREET

CENTER LINE OF WILLIAMSBURG BRIDGE

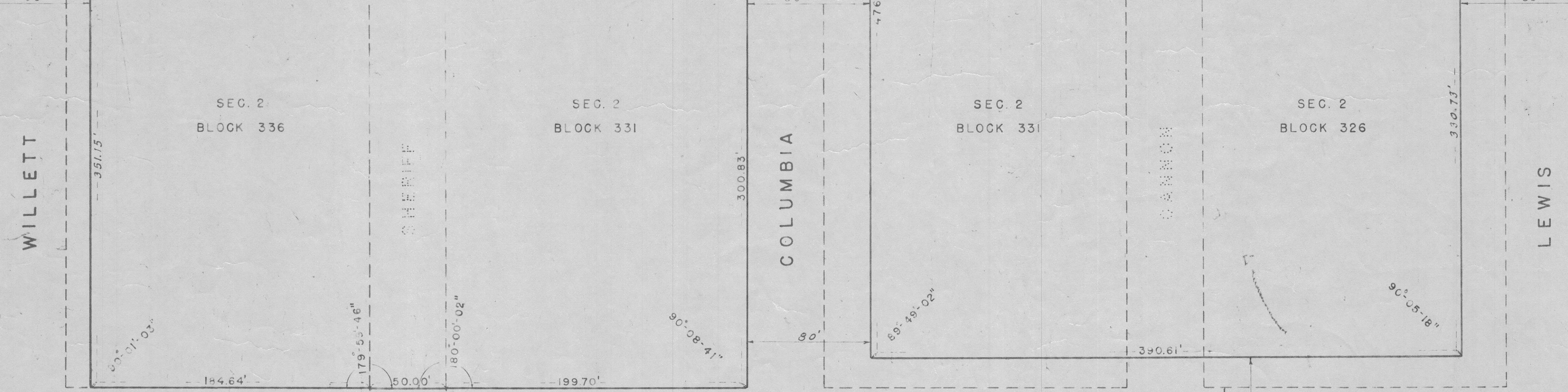
NEW STREET

WILLETT STREET COLUMBIA STREET CANNON STREET LEWIS STREET

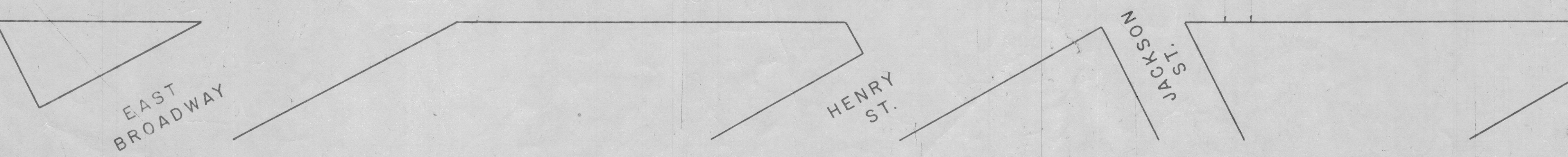


GRAND STREET

WILLETT STREET COLUMBIA STREET CANNON STREET LEWIS STREET



GRAND STREET



NOTES

LINES AND DIMENSIONS PREVIOUSLY ESTABLISHED AND HEREBY RETAINED ARE SHOWN BY FULL BLACK LINES AND BLACK FIGURES.  
LINES AND DIMENSIONS HEREBY ESTABLISHED ARE SHOWN BY FULL RED LINES AND RED FIGURES.  
LINES PREVIOUSLY ESTABLISHED AND HEREBY DISCONTINUED ARE SHOWN BY DASHED RED LINES.  
DIMENSIONS HEREBY DISCONTINUED ARE SHOWN BY BLACK FIGURES GROSSED BY A BLACK LINE.

- PLAYGROUND PREVIOUSLY ESTABLISHED SHOWN THIS:
- PLAYGROUND AREA HEREBY ELIMINATED SHOWN THIS:
- PLAYGROUND OR PLAYGROUND ADDITION HEREBY ESTABLISHED SHOWN THIS:

CITY OF NEW YORK  
OFFICE OF THE PRESIDENT BOROUGH OF MANHATTAN  
DEPARTMENT OF BOROUGH WORKS

MAP SHOWING A CHANGE IN THE STREET SYSTEM BY ELIMINATING FROM THE CITY MAP THE LINES OF

- BROOME STREET BETWEEN WILLETT STREET AND LEWIS STREET
- SHERIFF STREET BETWEEN GRAND STREET AND A NEW STREET
- CANNON STREET BETWEEN GRAND STREET AND A NEW STREET BY WIDENING
- WILLETT STREET ON ITS EASTERLY SIDE BETWEEN GRAND STREET AND A NEW STREET
- COLUMBIA STREET ON ITS EASTERLY SIDE BETWEEN GRAND STREET AND A NEW STREET
- LEWIS STREET ON ITS WESTERLY SIDE BETWEEN GRAND STREET AND A NEW STREET
- GRAND STREET ON ITS NORTHERLY SIDE BETWEEN COLUMBIA STREET AND LEWIS STREET BY LAYING OUT
- A NEW STREET ALONG THE SOUTHERLY SIDE OF WILLIAMSBURG BRIDGE BETWEEN WILLETT STREET AND LEWIS STREET AND BY LAYING OUT

A PLAYGROUND AND A PLAYGROUND ADDITION

DRAWN BY: *H. Naksman*  
CHECKED BY: *J. Last*  
*William H. Haffatt*  
SECTION ENGINEER  
*J. C. Collyer*  
ENGINEER OF DESIGN

I, HILDA G. SCHWARTZ, SECRETARY OF THE BOARD OF ESTIMATE OF THE CITY OF NEW YORK DO HEREBY CERTIFY THAT THIS MAP IS ONE OF FIVE SIMILAR MAPS ADOPTED BY THE SAID BOARD ON THE 23<sup>RD</sup> DAY OF OCTOBER 1947  
DATED: NEW YORK December 23, 1947

*Hilda G. Schwartz*  
SECRETARY BOARD OF ESTIMATE

DATED: MARCH 5, 1947  
*Hugo E. Rogers*  
PRESIDENT BOROUGH OF MANHATTAN  
*Michael H. DeLoach*  
CHIEF ENGINEER  
*Robert T. ...*  
CHIEF ENGINEER OF DESIGN