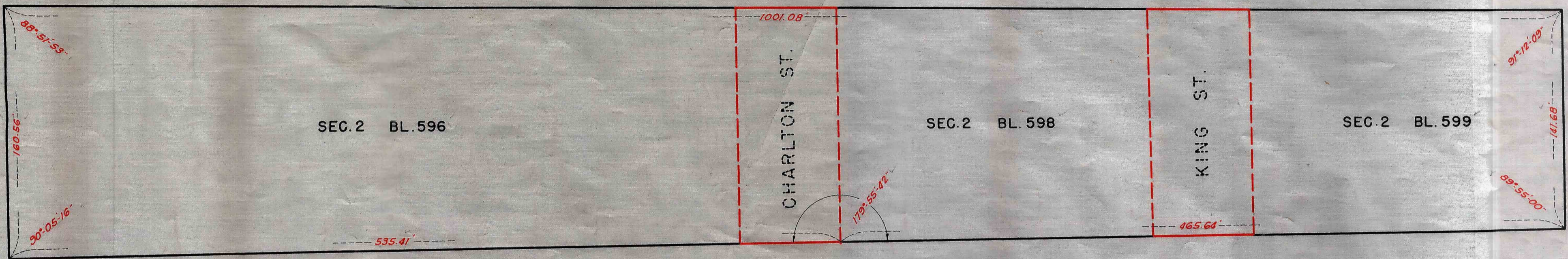


STREET

WASHINGTON STREET

STREET



HOUSTON

GREENWICH STREET

SPRING

VANDAM ST.

CHARLTON ST.

KING ST.

WEST

I, HILDA G. SCHWARTZ, SECRETARY OF THE BOARD OF ESTIMATE OF THE CITY OF NEW YORK DO HEREBY CERTIFY THAT THIS MAP IS ONE OF FIVE SIMILAR MAPS ADOPTED BY THE SAID BOARD OF ESTIMATE ON THE 24TH DAY OF APRIL 1947
 DATED: NEW YORK MAY 16, 1947

Hilda G. Schwartz
 SECRETARY BOARD OF ESTIMATE

NOTES

- LINES PREVIOUSLY ESTABLISHED AND HEREBY RETAINED ARE SHOWN BY FULL BLACK LINES.
- LINES AND DIMENSIONS HEREBY ESTABLISHED ARE SHOWN BY FULL RED LINES AND RED FIGURES.
- LINES PREVIOUSLY ESTABLISHED AND HEREBY DISCONTINUED ARE SHOWN BY DASHED RED LINES.

DRAWN BY: Sanchez
 CHECKED BY: E. Karp
William Hoffmann
 SECTION ENGINEER
J. C. Collyer
 ENGINEER OF DESIGN

CITY OF NEW YORK
 OFFICE OF THE PRESIDENT BOROUGH OF MANHATTAN
 DEPARTMENT OF BOROUGH WORKS
 MAP SHOWING A CHANGE IN THE STREET SYSTEM
 BY ELIMINATING FROM THE CITY MAP THE LINES OF
CHARLTON STREET AND KING STREET
 BETWEEN
 GREENWICH STREET AND WASHINGTON STREET

SCALE: 1" = 50' DATE: Sept. 26, 1945
Eugene Nathan
 PRESIDENT BOROUGH OF MANHATTAN
Dean G. Edwards
 CHIEF ENGINEER
Charles W. Williams
 COMMISSIONER OF BOROUGH WORKS