

CITY OF NEW YORK  
OFFICE OF THE PRESIDENT  
DEPARTMENT OF BOROUGH WORKS

BOROUGH OF MANHATTAN

**FINAL DAMAGE MAP**  
IN THE MATTER OF ACQUIRING TITLE FOR  
**THE WIDENING OF EAST RIVER DRIVE**  
ON ITS WESTERLY SIDE

FROM  
EAST 92<sup>ND</sup> STREET TO EAST 99<sup>TH</sup> STREET  
AND FOR

**THE PUBLIC PARKS**

BETWEEN  
FIRST AVENUE AND EAST RIVER DRIVE  
FROM

EAST 95<sup>TH</sup> STREET TO EAST 97<sup>TH</sup> STREET

IN THE BOROUGH OF MANHATTAN  
CITY OF NEW YORK

DATED: OCT. 15, 1945

SCALE: 1"=30'

*Edgar Wallace*  
PRESIDENT BOROUGH OF MANHATTAN

*Dean G. Edwards*  
CHIEF ENGINEER

*Charles W. Williams*  
COMMISSIONER OF BOROUGH WORKS

APPROVED BY THE BOARD OF ESTIMATE ON ..... 1945

ACTING SECRETARY, BOARD OF ESTIMATE

DAMAGE NO.	BLOCK NO.	LOT NO.	AREA TO BE ACQUIRED - SQ. FT.	REMAINING AREA SQ. FT.	OWNER	REMARKS
1	1572	23	4.6	2,345.4	PRIVATE	
2	1572	24	5.46	2,295.4	PRIVATE	
3	1572	25	17.27	2,177.3	PRIVATE	
4	1572	26	35.27	1,436.5	PRIVATE	
5	1572	27	59.3	1,165.0	PRIVATE	
6	1572	28	79.29	799.6	PRIVATE	
7	1572	29	1,094.0	330.2	PRIVATE	
8	1573	18	158.0	3,460.0	CITY OF NEW YORK	
9	1573	18	7,254.6		CITY OF NEW YORK	
10	1573	14	31.3	10,039.7	PRIVATE	OUTSHORE OF RANDEL LINE
11	1573	1	4,267.0	59,987.0	PRIVATE	OUTSHORE OF RANDEL LINE
12	1574	16	7,274.2	0.0	CITY OF NEW YORK	OUTSHORE OF RANDEL LINE
13	1574	108	13,058.0	6,689.1	PRIVATE	OUTSHORE OF RANDEL LINE
14	1574	12	430.0	9,639.3	PRIVATE	OUTSHORE OF RANDEL LINE
15	1575	1	27,391.8	0.0	PRIVATE	FOR PARK PURPOSES-OUTSHORE OF RANDEL LINE
16	1575	1	21,757.1	0.0	PRIVATE	OUTSHORE OF RANDEL LINE
17	1690	1	12,658.4	0.0	PRIVATE	FOR PARK PURPOSES-OUTSHORE OF RANDEL LINE
18	1690	1	4,296.1	0.0	PRIVATE	OUTSHORE OF RANDEL LINE
19	1690	45	13,187.2	0.0	PRIVATE	FOR PARK PURPOSES-OUTSHORE OF RANDEL LINE
20	1690	45	3,767.3	0.0	PRIVATE	OUTSHORE OF RANDEL LINE
21	1691	1	6,118.5	37,224.5	PRIVATE	OUTSHORE OF RANDEL LINE
22	1692	1	6,761.3	57,905.0	PRIVATE	OUTSHORE OF RANDEL LINE

## TABLE OF ASSESSED VALUATIONS (CORRECTED AS OF 1945)

DAMAGE NO	BLOCK NO	LOT NO	ASSESSED VALUATION OF BUILDINGS *			ASSESSED VALUATION OF LAND *			REMARKS
			1943	1944	1945	1943	1944	1945	
1	1572	23	—	—	—	20.	19.	17.	PRIVATE
2	1572	24	—	—	—	232.	220.	180.	"
3	1572	25	—	—	—	735.	700.	570.	"
4	1572	26	—	—	—	1,675.	1,580.	1,380.	"
5	1572	27	—	—	—	2,592.	2,430.	2,025.	"
6	1572	28	—	—	—	3,976.	3,728.	3,106.	"
7	1572	29	—	—	—	9,085.	7,700.	6,160.	"
8	1573	18	—	—	—	770.	770.	770.	CITY OF NEW YORK
9	1573	18	—	—	—	35,350.	35,350.	35,350.	"
10	1573	14	35,000.	30,000.	30,000.	93.	93.	93.	PRIVATE
11	1573	1	20,000.	15,000.	15,000.	15,272.	15,272.	15,139.	"
12	1574	16	—	—	—	55,000.	55,000.	55,000.	CITY OF NEW YORK
13	1574	108	34,000.	31,000.	31,000.	38,048.	38,048.	38,048.	PRIVATE
14	1574	12	12,000.	10,000.	10,000.	1,153.	1,153.	1,153.	"
15	1575	1	750,000.	750,000.	750,000.	147,600.	147,600.	147,600.	PRIVATE - FOR PARK PURPOSES
16	1575	1	750,000.	750,000.	750,000.	117,400.	117,400.	117,400.	PRIVATE
17	1690	1	33,000.	28,000.	28,000.	42,580.	42,580.	42,580.	PRIVATE - FOR PARK PURPOSES
18	1690	1	33,000.	28,000.	28,000.	14,420.	14,420.	14,420.	PRIVATE
19	1690	45	500.	500.	200.	44,290.	44,290.	44,290.	PRIVATE - FOR PARK PURPOSES
20	1690	45	500.	500.	200.	12,710.	12,710.	12,710.	PRIVATE
21	1691	1	35,000.	25,000.	25,000.	18,330.	18,330.	18,330.	"
22	1692	1	500.	500.	500.	17,765.	17,765.	17,765.	PRIVATE

\* VALUATIONS OF BUILDINGS AS GIVEN IN ABOVE TABLE ARE TOTAL VALUATIONS OF IMPROVEMENTS ON EVERY TAX LOT.  
 • LAND VALUATIONS AS GIVEN IN ABOVE TABLE REFER TO THE DAMAGE PARCELS AND ARE PRO-RATED ACCORDING TO THE AREA OF THE PARCEL TO BE ACQUIRED.

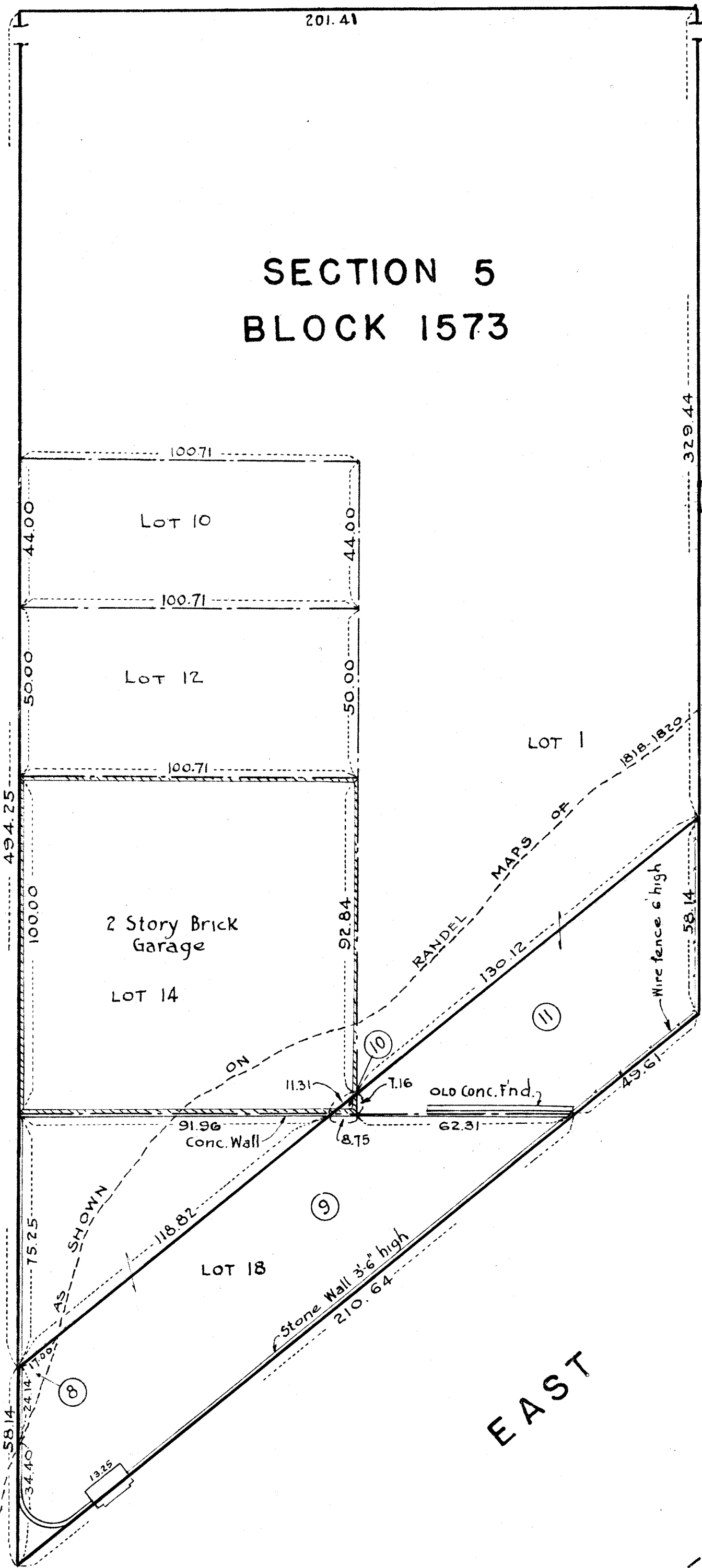


FIRST

201.41

SECTION 5  
BLOCK 1573

EAST 93<sup>RD</sup> STREET

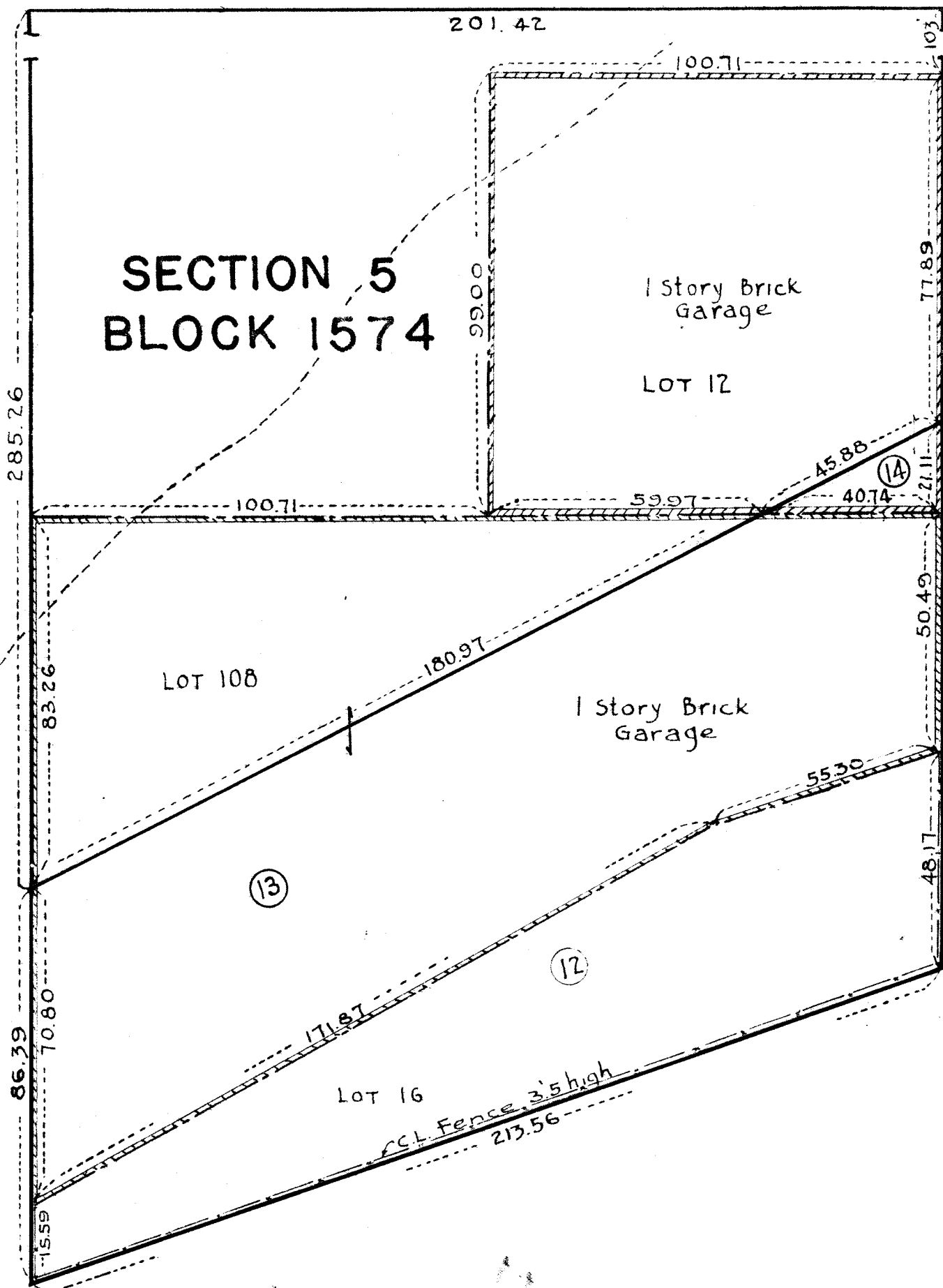


AVENUE

201.42

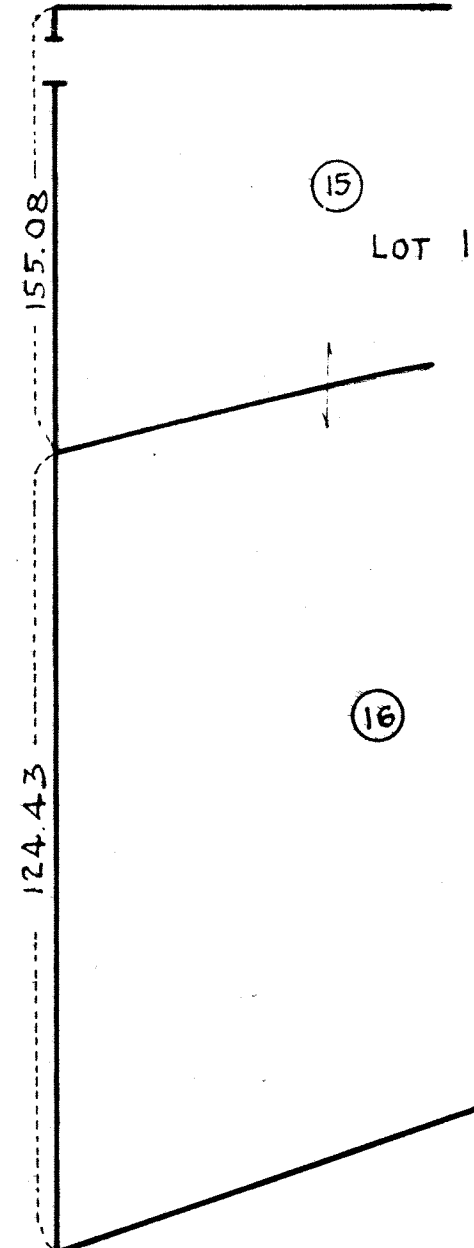
SECTION 5  
BLOCK 1574

EAST 94<sup>TH</sup> STREET



EAST 95<sup>TH</sup> STREET

DRIVE



RIVER

RIVER

EAST

U.S. BULK-HEAD

ACC. No. 28631

SCALE: 1"=30'

TER LINE AS SHOWN ON RANDEL MAPS 1812-1820

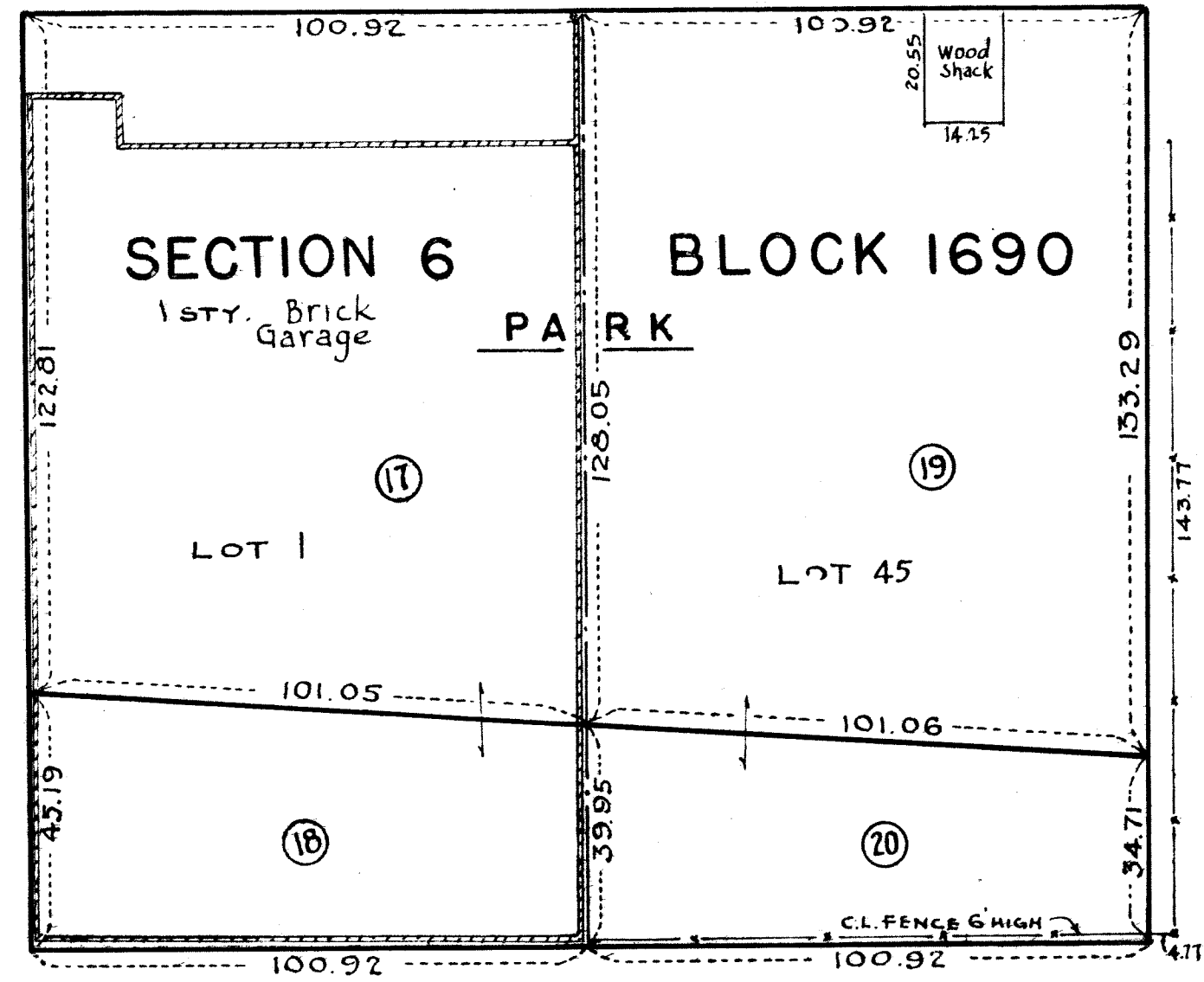
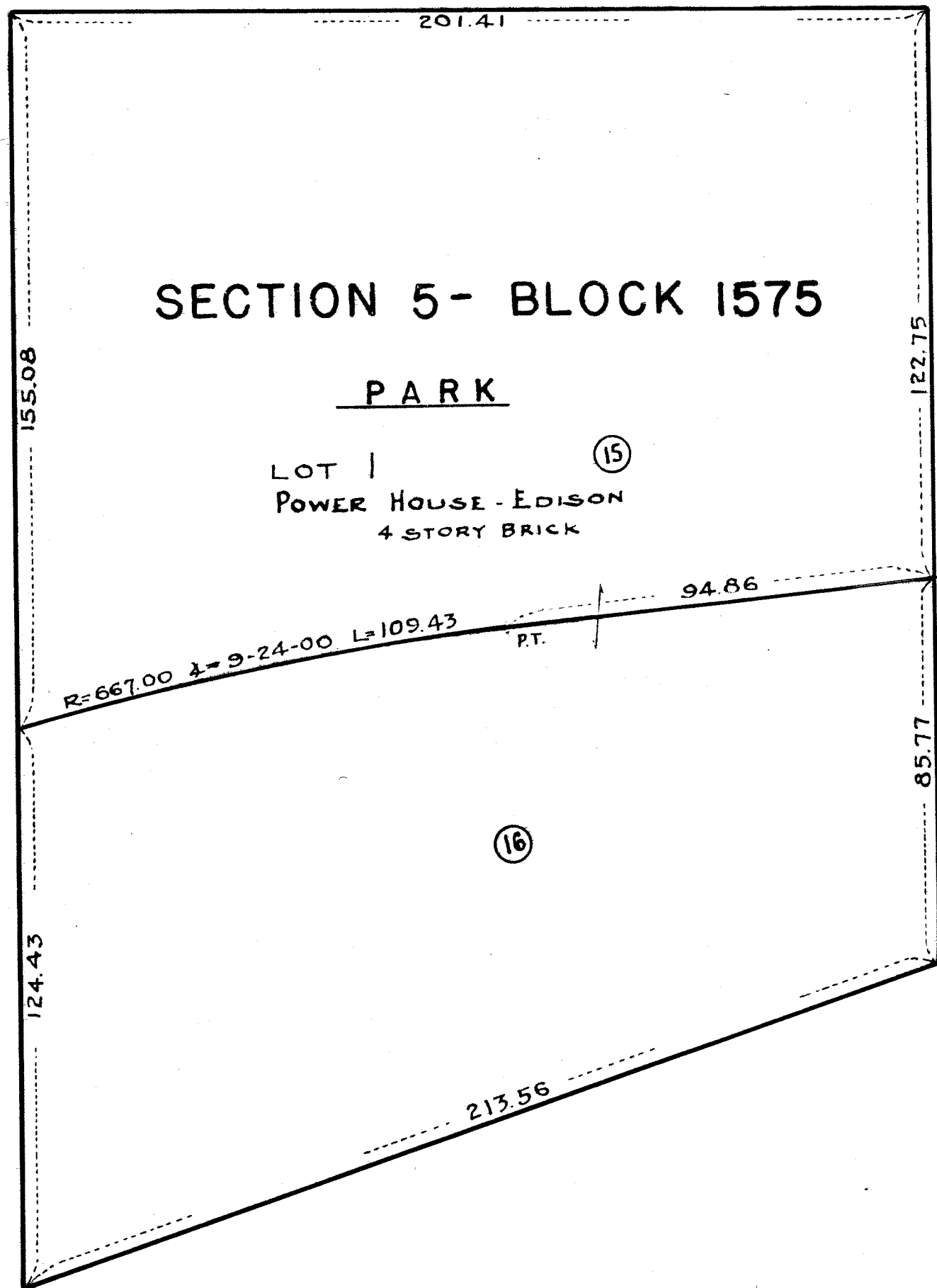
FIRST

AVENUE

EAST 95<sup>TH</sup> STREET

EAST 96<sup>TH</sup> STREET

EAST 97<sup>TH</sup> STREET



RIVER

DRIVE

RIVER

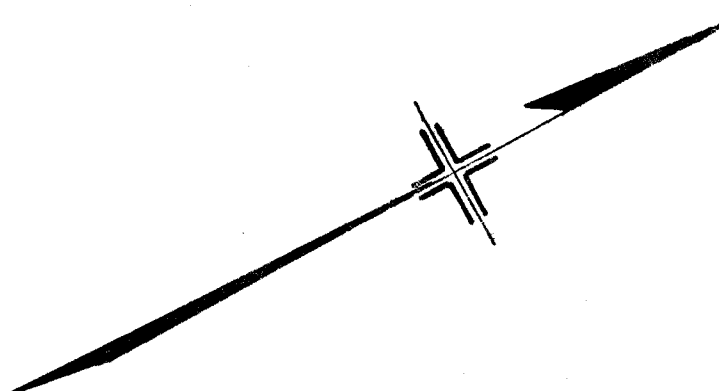
EAST

EAST

BULKHEAD

LINE

U.S.



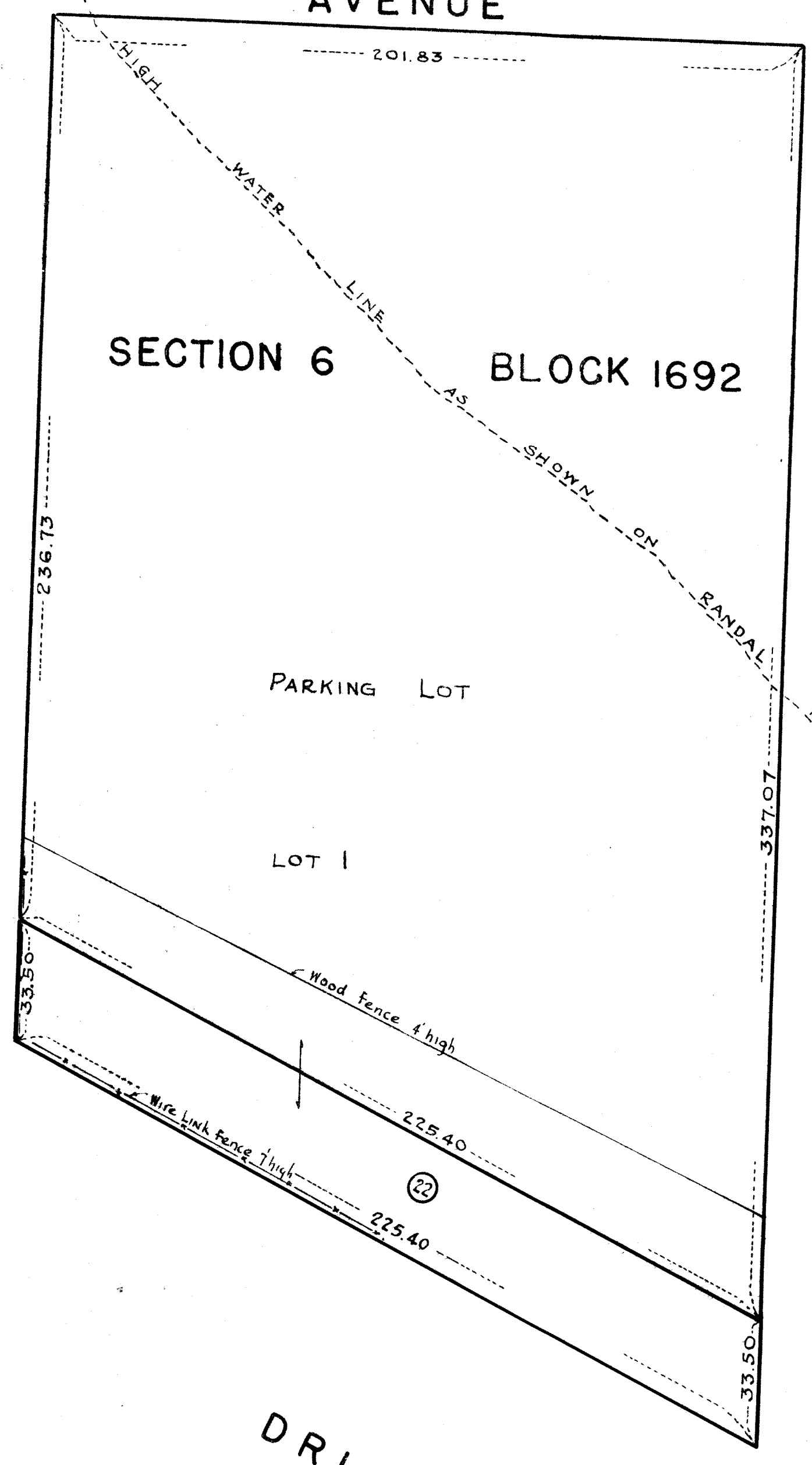
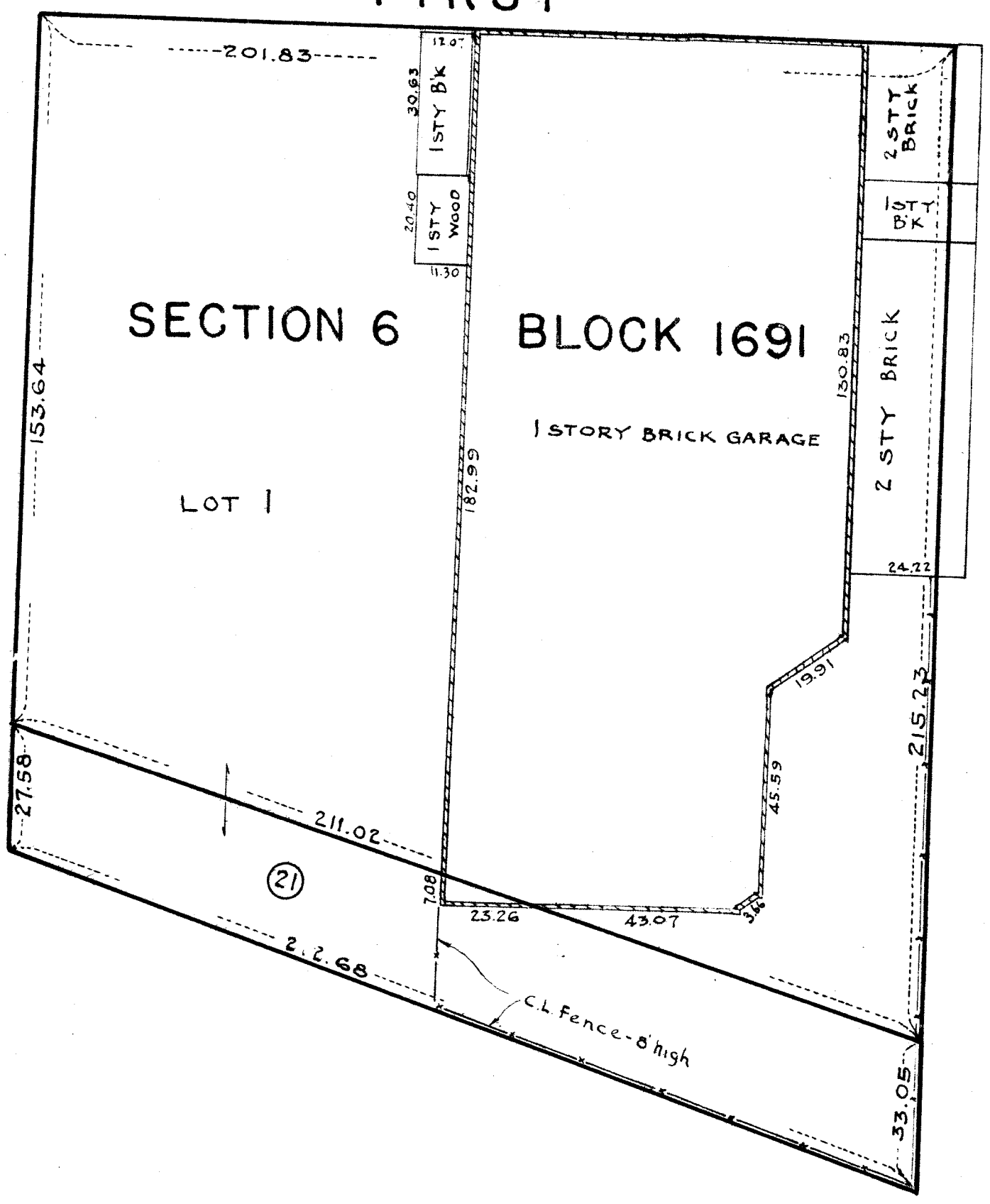
FIRST

AVENUE

EAST 97 TH STREET

EAST 98 TH STREET

EAST 99 TH STREET



EAST RIVER DRIVE

EAST RIVER

BULKHEAD LINE

