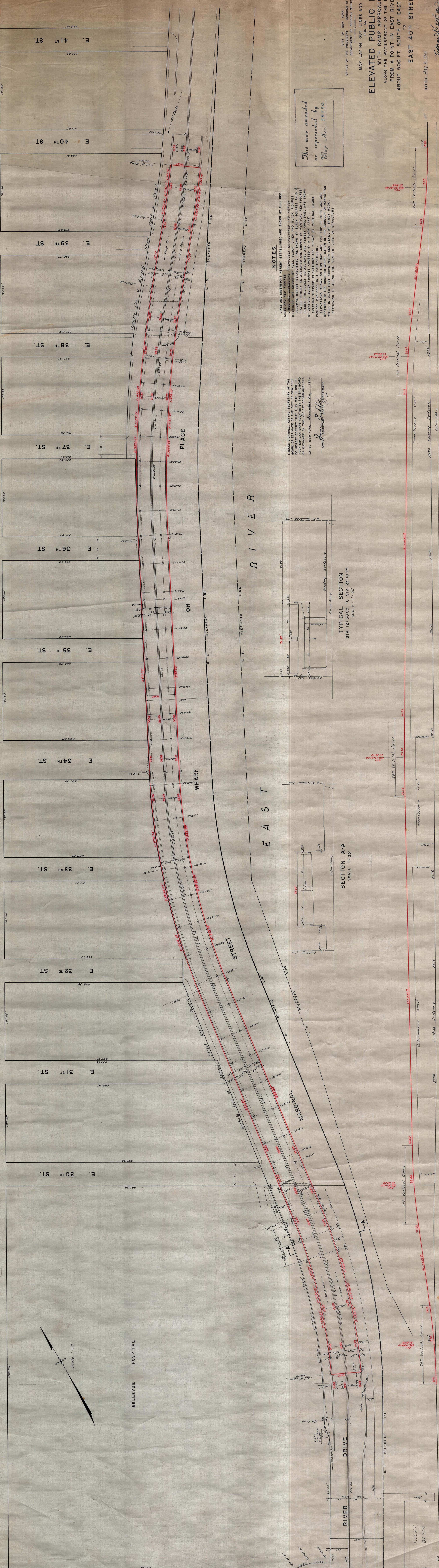


CITY OF NEW YORK
 OFFICE OF THE PRESIDENT OF THE BOARD OF ESTIMATES AND APPOINTMENTS
 DEPARTMENT OF PUBLIC WORKS

ELEVATED PUBLIC HIGHWAY
 FOR AN
MAP LAYING OUT LINES AND GRADES
 WITH RAMP APPROACHES
 ALONG THE WATERFRONT OF THE EAST RIVER
 FROM A POINT IN EAST RIVER DRIVE
 ABOUT 500 FT. SOUTH OF EAST 30TH STREET
 TO
EAST 40TH STREET

DATE: MAY 8, 1934
 SCALE: 1" = 50'
 ENGINEER: *Dean B. Stoddard*
 CHIEF ENGINEER
 SUPERVISOR: *Frederick W. Hall*
 COMMISSIONER OF PUBLIC WORKS

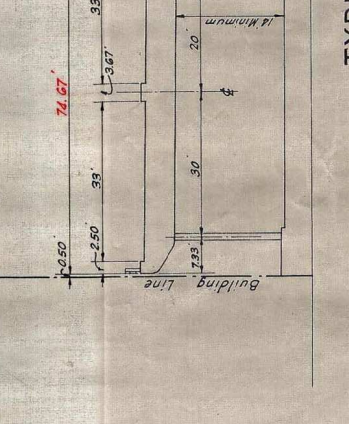
This map amended
 or superseded by
 Map No. 28930



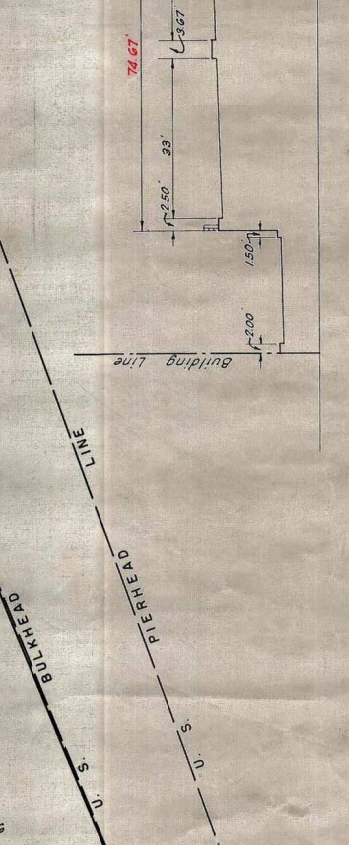
NOTES

LINES AND DIMENSIONS HEREBY ESTABLISHED ARE SHOWN BY FULL RED LINES AND RED FIGURES EXCEPT WHERE SHOWN OTHERWISE. DIMENSIONS AND GRADES RETURNED ARE SHOWN BY FULL BLACK LINES AND BLACK FIGURES. CURVES HEREBY ESTABLISHED ARE SHOWN BY BLACK SQUARES THIS MAP IS THE PROPERTY OF THE CITY OF NEW YORK AND NO PART OF IT IS TO BE REPRODUCED OR TRANSMITTED IN ANY FORM OR BY ANY MEANS WITHOUT THE WRITTEN PERMISSION OF THE BOARD OF ESTIMATES AND APPOINTMENTS. GRADES PREVIOUSLY ESTABLISHED AND HEREBY ABOLISHED ARE SHOWN BY VERTICAL BLACK FIGURES CROSSED BY A BLACK LINE. GRADES HEREBY ESTABLISHED ARE SHOWN BY VERTICAL BLACK FIGURES ENCLOSED IN A PARENTHESIS SHOWING THE ELEVATION SHOWN ON THIS MAP ARE FOR TOP OF CURB, AND ARE NOT TO BE CONSIDERED AS FINISH GRADES. GRADES ARE SHOWN WHICH IS 2.700 FEET ABOVE MEAN SEA LEVEL AT SANDY HOOK STATIONING IS ALONG THE CENTER LINE OF STRUCTURE.

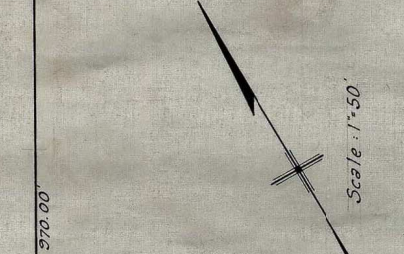
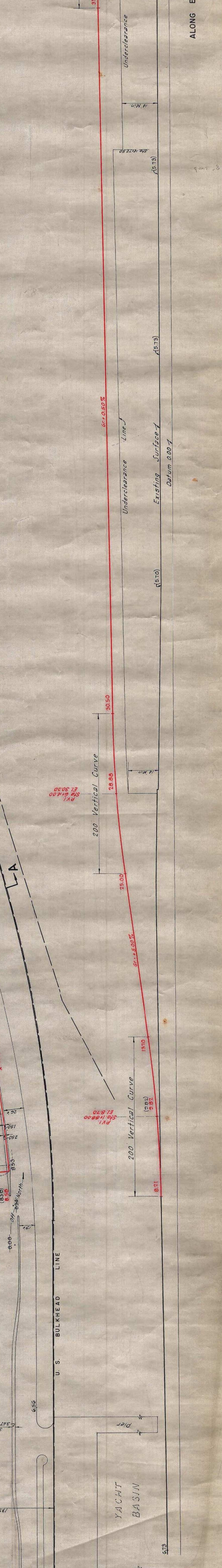
TYPICAL SECTION



SECTION A-A



PROFILE



DRAWN BY: *Frederick W. Hall*
 CHECKED BY: *Dean B. Stoddard*
 SUPERVISOR OF PUBLIC WORKS
 CITY OF NEW YORK