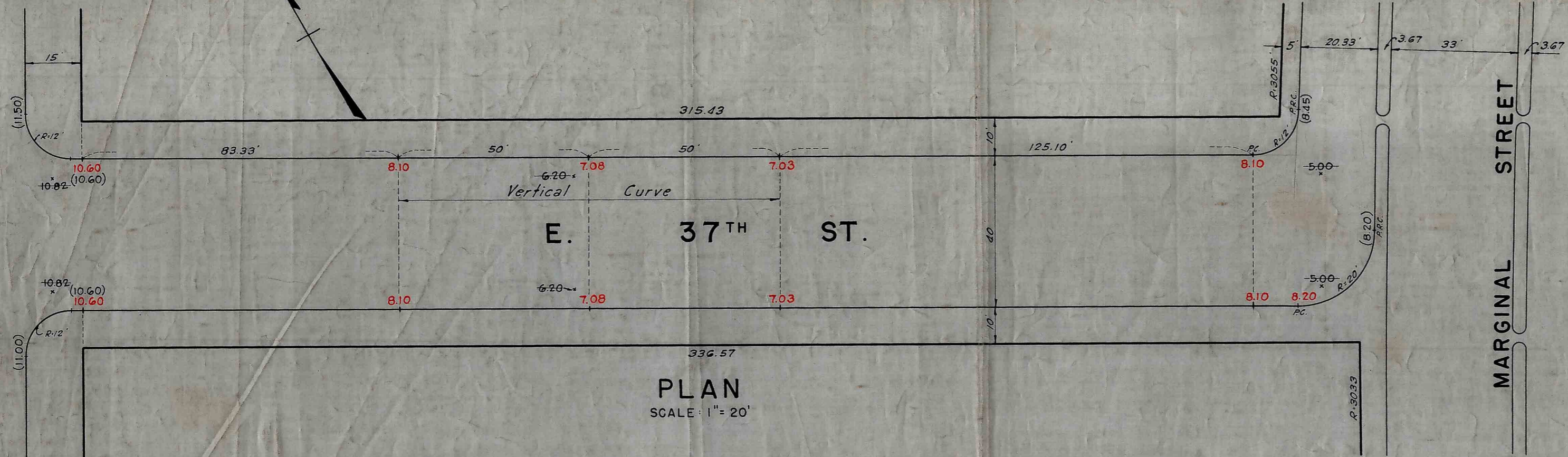


ISAAC EICHHOLZ, ACTING SECRETARY OF THE BOARD OF ESTIMATE OF THE CITY OF NEW YORK DO HEREBY CERTIFY THAT THIS MAP IS ONE OF FOUR SIMILAR MAPS ADOPTED BY THE SAID BOARD OF ESTIMATE ON THE 4<sup>TH</sup> DAY OF DEC. 1942 DATED: NEW YORK Nov. 12, 1943

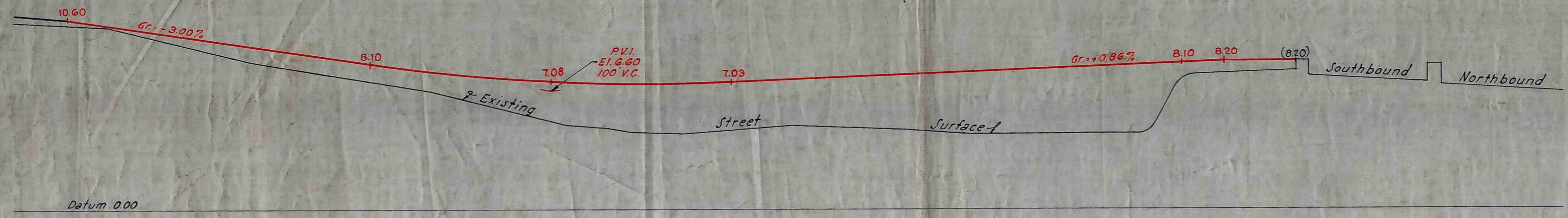
*Isaac Eichholz*  
ACTING SECRETARY BOARD OF ESTIMATE

AVE.

FIRST



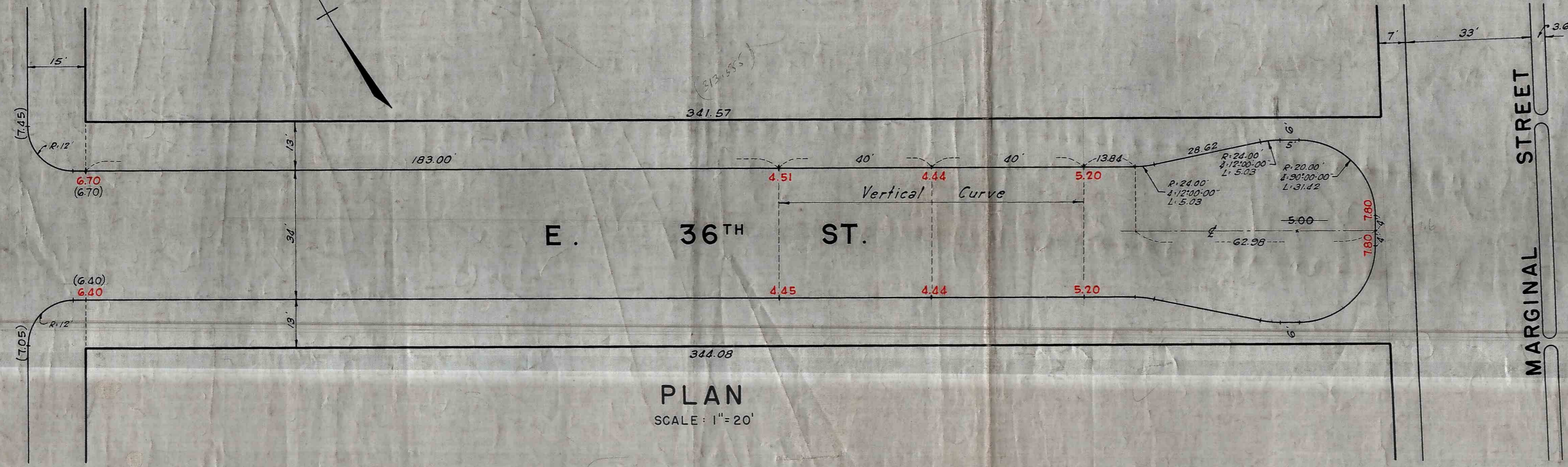
PLAN  
SCALE: 1" = 20'



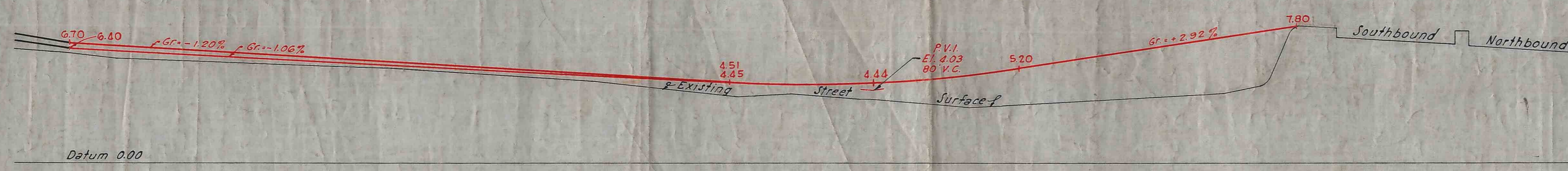
PROFILE  
SCALES: HOR. 1" = 20'  
VERT. 1" = 4'

AVE.

FIRST



PLAN  
SCALE: 1" = 20'



PROFILE  
SCALES: HOR. 1" = 20'  
VERT. 1" = 4'

LEGEND

LINES AND DIMENSIONS PREVIOUSLY ESTABLISHED AND HEREBY RETAINED ARE SHOWN BY FULL BLACK LINES AND BLACK FIGURES.  
GRADES HEREBY ESTABLISHED ARE SHOWN BY VERTICAL RED FIGURES.  
GRADES PREVIOUSLY ESTABLISHED AND HEREBY ABOLISHED ARE SHOWN BY VERTICAL BLACK FIGURES CROSSED BY A BLACK LINE.  
EXISTING SURFACE ELEVATIONS ARE SHOWN BY VERTICAL BLACK FIGURES ENCLOSED IN PARENTHESIS  
ELEVATIONS SHOWN ON THIS MAP ARE FOR TOP OF CURB, AND ARE REFERRED TO THE BOROUGH WORKS DATUM OF THE BOROUGH OF MANHATTAN WHICH IS 2.750 FEET ABOVE MEAN SEA LEVEL AT SANDY HOOK.

CITY OF NEW YORK  
OFFICE OF THE PRESIDENT BOROUGH OF MANHATTAN  
DEPARTMENT OF BOROUGH WORKS  
MAP SHOWING A CHANGE OF GRADE  
ON  
**EAST 36<sup>TH</sup> STREET**  
AND  
**EAST 37<sup>TH</sup> STREET**  
BETWEEN  
**FIRST AVENUE AND THE MARGINAL STREET**

DATED: JUNE 16, 1942

*Colon Neelander*  
PRESIDENT BOROUGH OF MANHATTAN

*J. J. ...*  
CHIEF ENGINEER

*W. B. ...*  
COMMISSIONER OF BOROUGH WORKS

DRAWN BY: Sanchez  
CHECKED BY: Korp  
*William ...*  
SECTION ENGINEER  
*...*  
ENGINEER OF DESIGN