

INWOOD HILL PARK

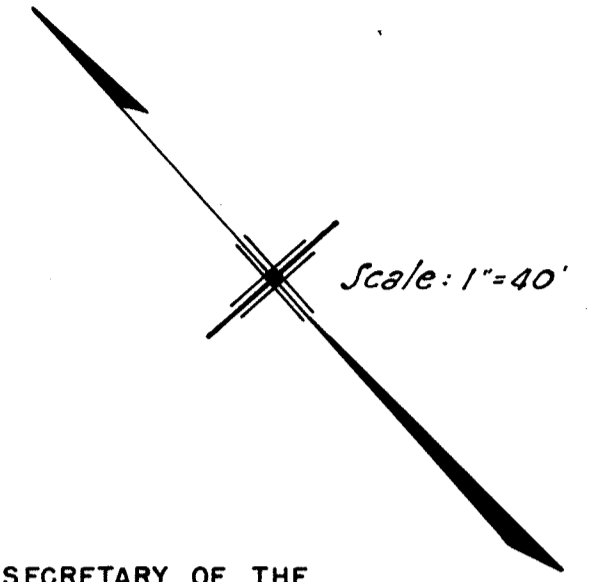
SECTION 8 BLOCK 2255

H U D S O N

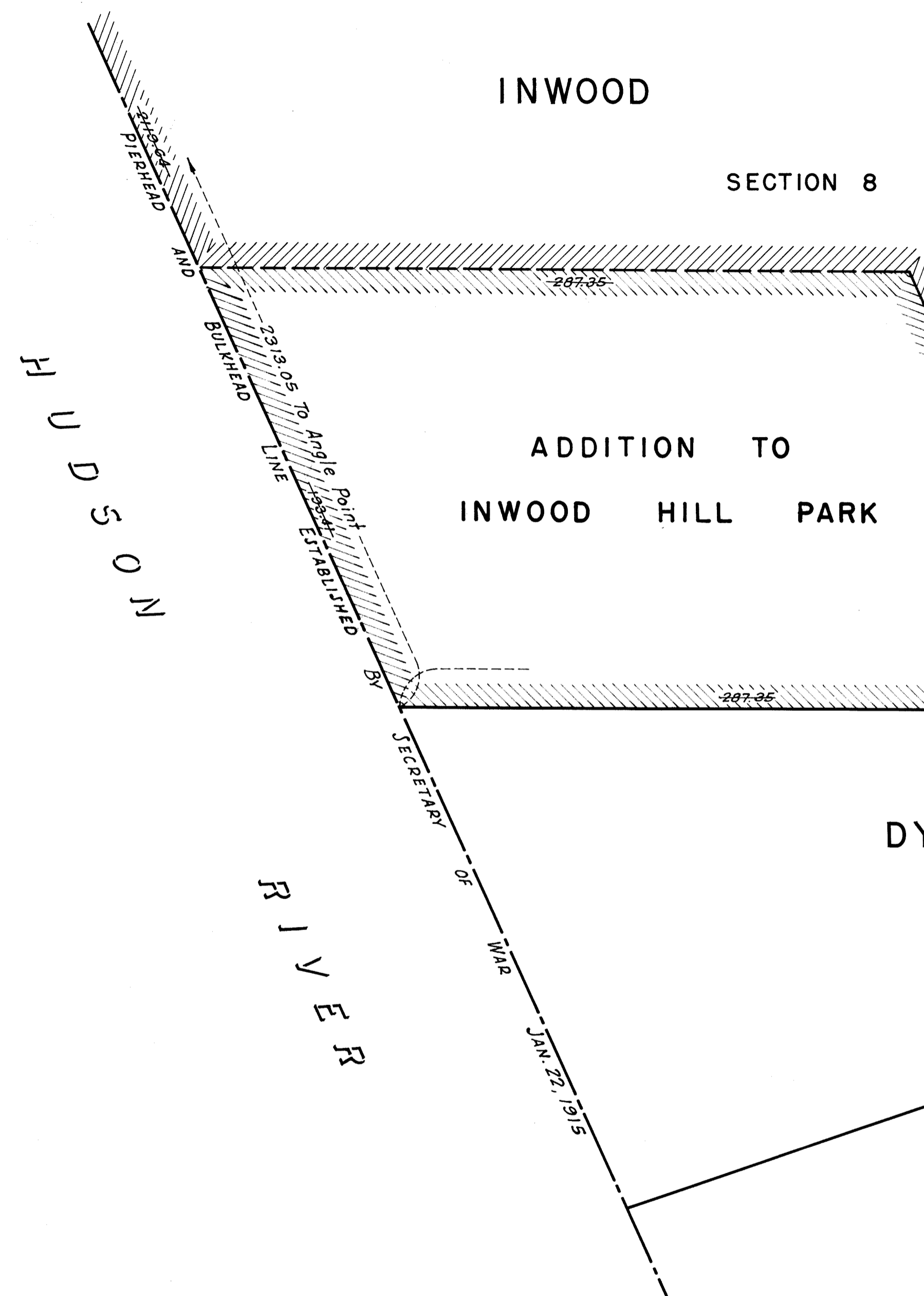
R I V E R

ADDITION TO INWOOD HILL PARK

DYCKMAN STREET



ISAAC EICHHOLZ, ACTING SECRETARY OF THE BOARD OF ESTIMATE OF THE CITY OF NEW YORK DO HEREBY CERTIFY THAT THIS MAP IS ONE OF FOUR SIMILAR MAPS ADOPTED BY THE SAID BOARD OF ESTIMATE ON THE 4TH DAY OF DEC. 1942 DATED: NEW YORK Oct. 27, 1943



LEGEND

LINES AND DIMENSIONS PREVIOUSLY ESTABLISHED AND HEREBY RETAINED ARE SHOWN BY FULL BLACK LINES AND BLACK FIGURES. DIMENSIONS HEREBY ESTABLISHED ARE SHOWN BY RED FIGURES. LINES PREVIOUSLY ESTABLISHED AND HEREBY SUPERSEDED ARE SHOWN BY DASHED BLACK LINES. DIMENSIONS PREVIOUSLY ESTABLISHED AND HEREBY SUPERSEDED ARE SHOWN BY BLACK FIGURES CROSSED BY A BLACK LINE. PARK ADDITION HEREBY ESTABLISHED IS SHOWN THUS... [Hatched box] PARK HERETOFORE ESTABLISHED IS SHOWN THUS... [Cross-hatched box]

DRAWN BY Sanchez CHECKED BY Korp William J. Hall ACT. SECTION ENGINEER H.C. Collyer ENGINEER OF DESIGN

CITY OF NEW YORK OFFICE OF THE PRESIDENT BOROUGH OF MANHATTAN DEPARTMENT OF BOROUGH WORKS MAP SHOWING A CHANGE IN THE CITY PLAN BY LAYING OUT AN ADDITION TO INWOOD HILL PARK ALONG THE NORTHERLY SIDE OF DYCKMAN STREET AT THE HUDSON RIVER

DATED: JUNE 19, 1942 Commissioner of Parks, President Borough of Manhattan, Chief Engineer, Commissioner of Borough Works

Drawn 15

Filed in the Office of the Borough Clerk, Manhattan 11/3/43

Acc. No. 28495