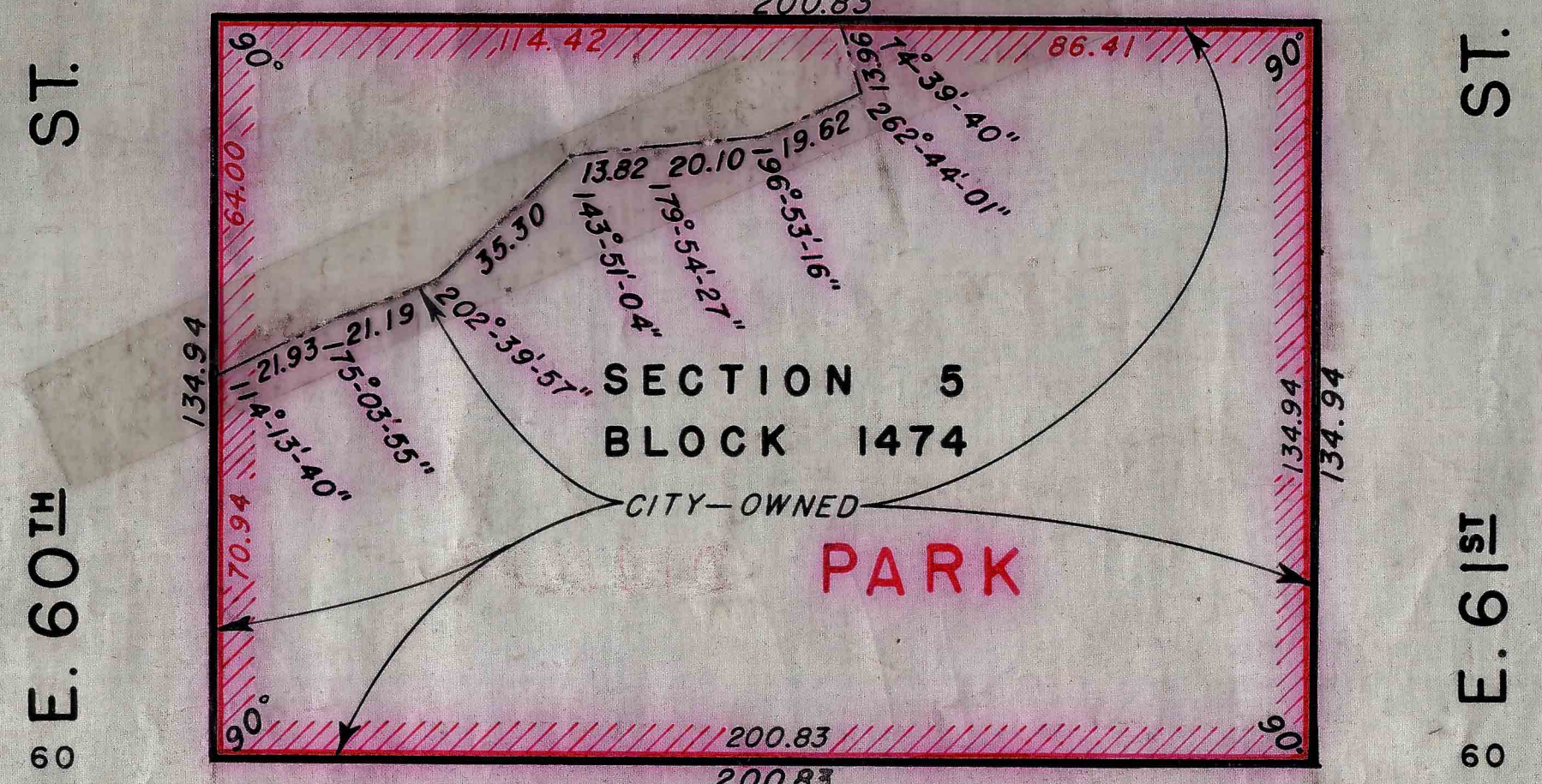
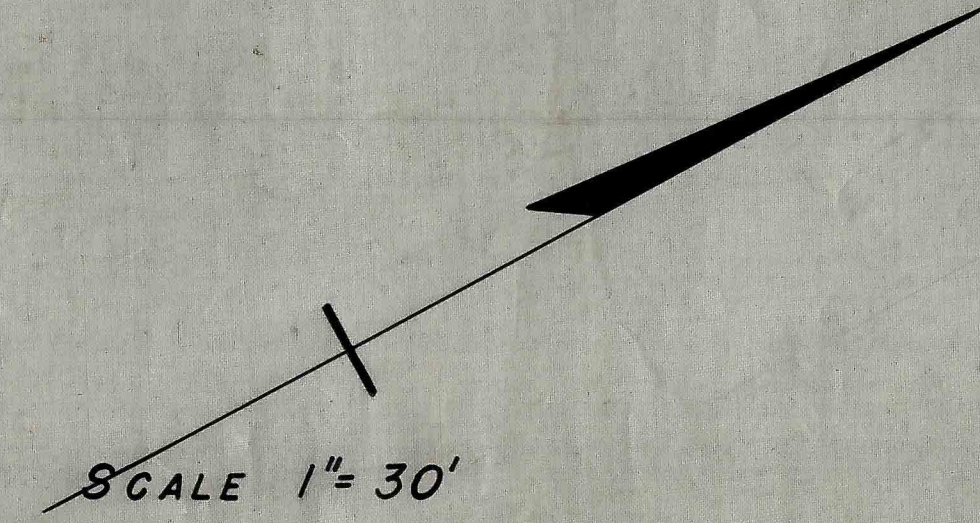


60 100 YORK AVE. 100 60



LEGEND
LINES AND DIMENSIONS PREVIOUSLY ESTABLISHED AND HEREBY RETAINED ARE SHOWN BY FULL BLACK LINES AND BLACK FIGURES
LINES AND DIMENSIONS HEREBY ESTABLISHED ARE SHOWN BY FULL RED LINES AND RED FIGURES.
BOUNDARIES OF PARK HEREBY LAID OUT ARE ENCLOSED IN RED LINES AND CROSS-HATCHED

EAST RIVER DRIVE.

CITY OF NEW YORK
DEPARTMENT OF PARKS
MAP
LAYING OUT A
PARK
IN THE AREA BOUNDED BY
EAST 60TH. STREET, YORK AVENUE, EAST 61ST.
STREET AND EAST RIVER DRIVE.
BOROUGH OF MANHATTAN
SEPTEMBER 30, 1942

[Signature]
COMMISSIONER OF PARKS.

MARGINAL STREET WHARF OR PLACE.

U.S. PIERHEAD LINE

EAST RIVER.

C.P. 474
7/28/38

RECEIVED
DEPARTMENT OF PARKS
BOARD OF ESTIMATE
SEP 30 1942