

CITY OF NEW YORK
OFFICE OF THE PRESIDENT BOROUGH OF MANHATTAN
DEPARTMENT OF BOROUGH WORKS

DRAFT DAMAGE MAP
IN THE MATTER OF ACQUIRING TITLE TO
A STREET DESIGNATED AS
EAST RIVER DRIVE

BETWEEN
EAST 14TH STREET AND EAST 30TH STREET
AND TO
AVENUE B
BETWEEN
EAST 21ST STREET AND MARGINAL STREET
IN THE BOROUGH OF MANHATTAN
CITY OF NEW YORK

DATED: NOVEMBER 23, 1942

SCALE: 1" = 50'

Eugene Wilson, Jr.
PRESIDENT, BOROUGH OF MANHATTAN

Dean G. Edwards
CHIEF ENGINEER

Walter D. Bingham
COMMISSIONER OF BOROUGH WORKS

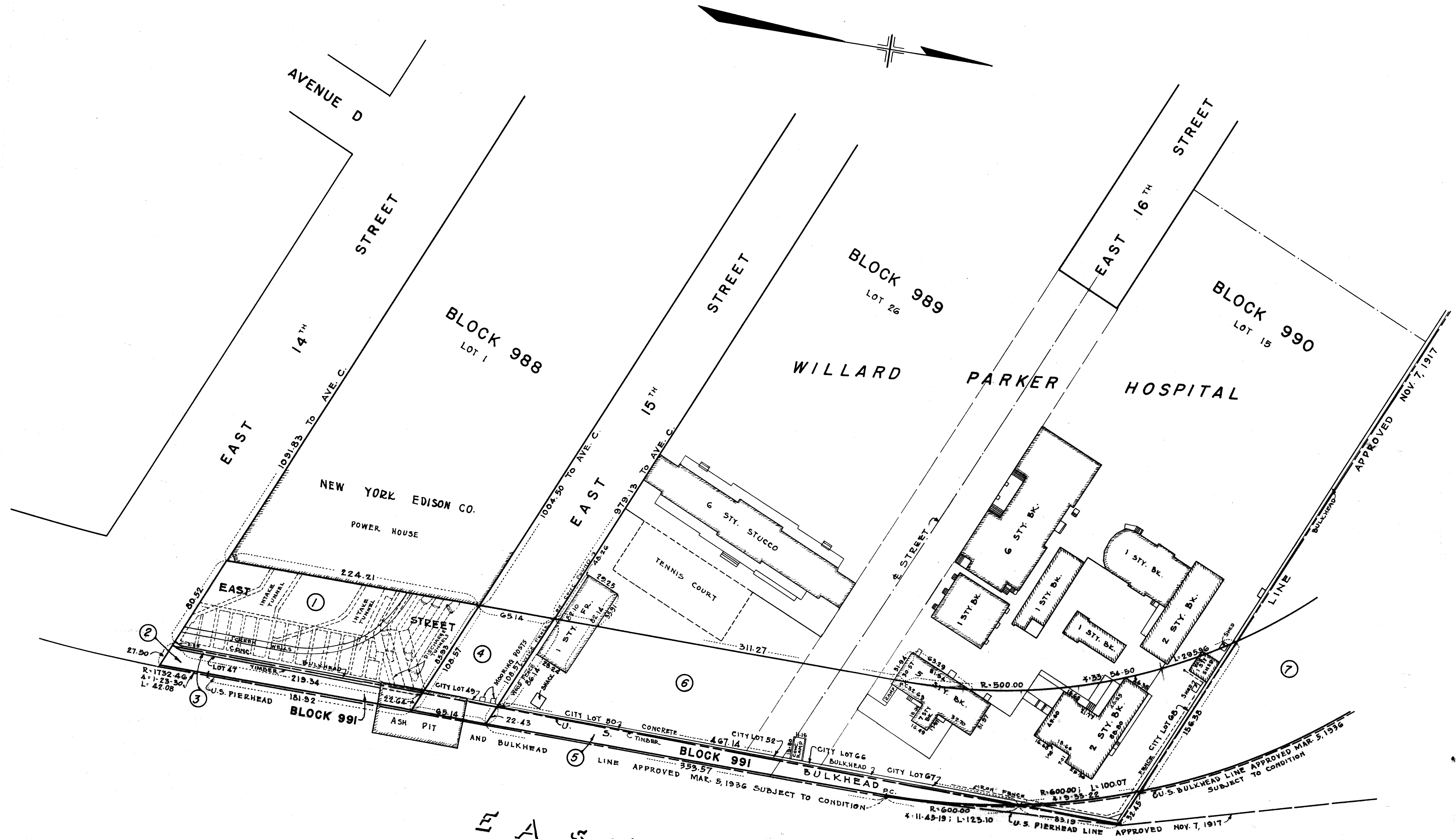
APPROVED BY THE BOARD OF ESTIMATE ON 1943

SECRETARY, BOARD OF ESTIMATE

Sheet 15

ACC. No. **28445**

B

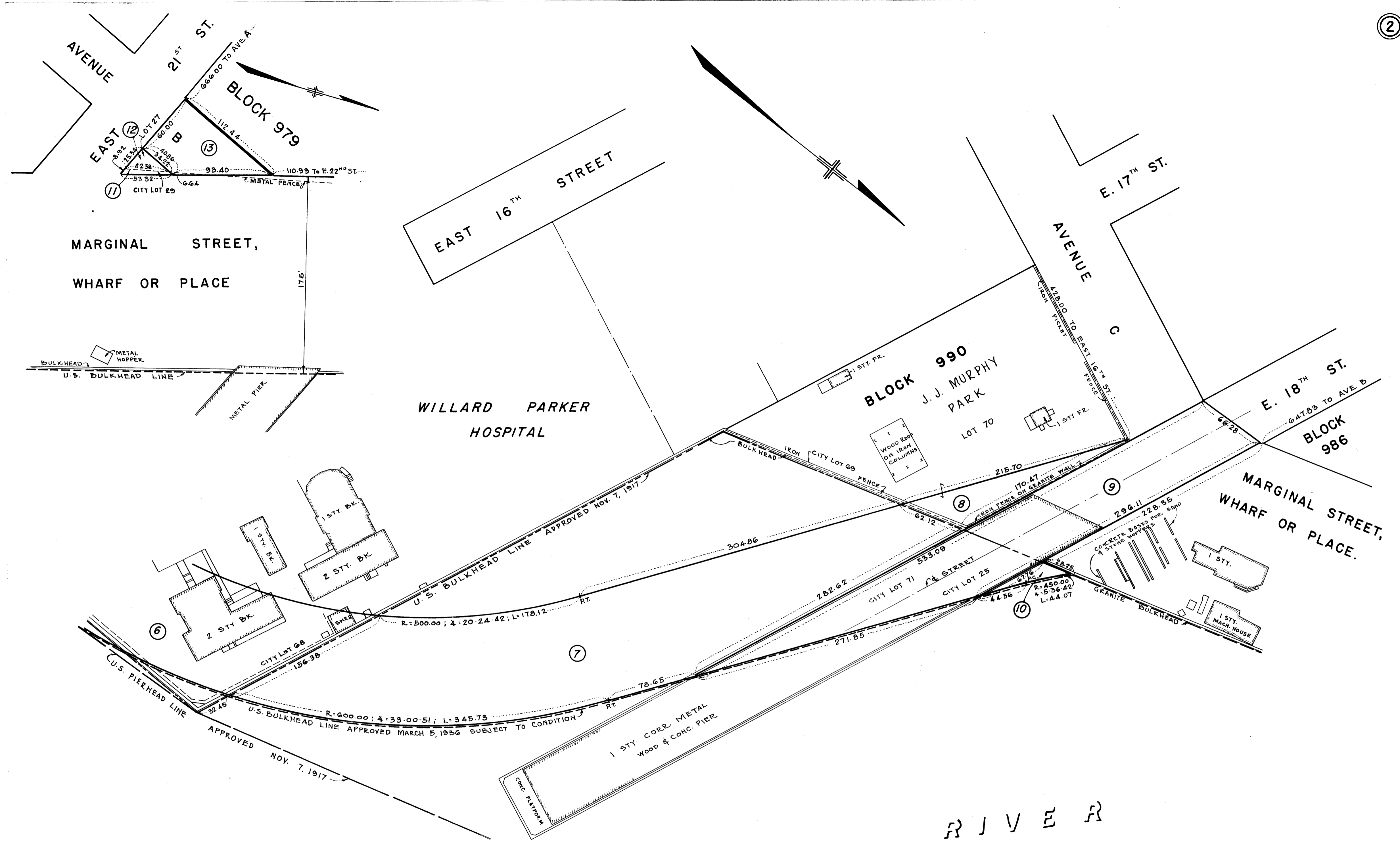


EAST

RIVER

Drawn 15

Scale 1"=50'



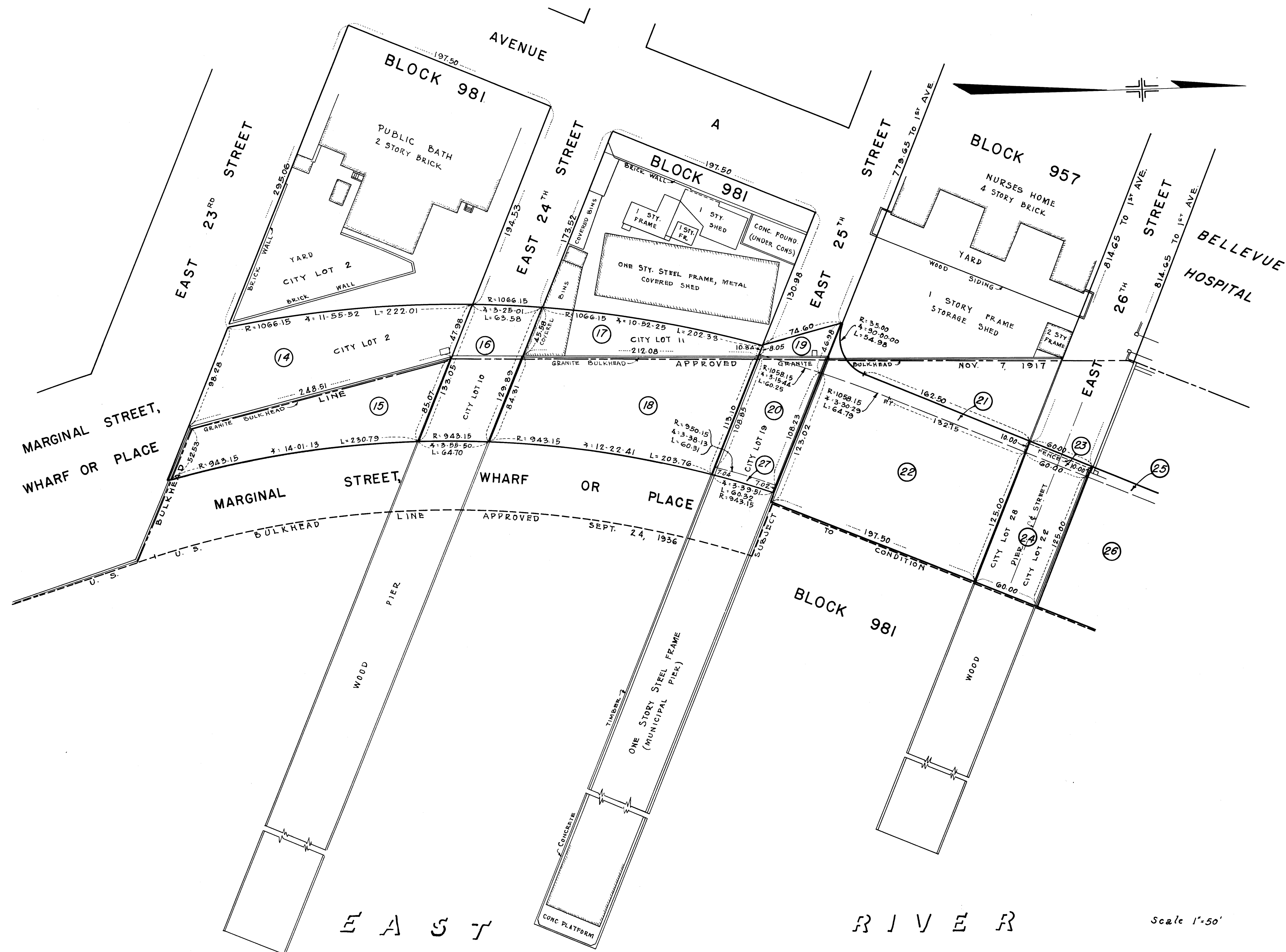
E A S T

R I V E R

Scale 1"=50'

Drawn 15

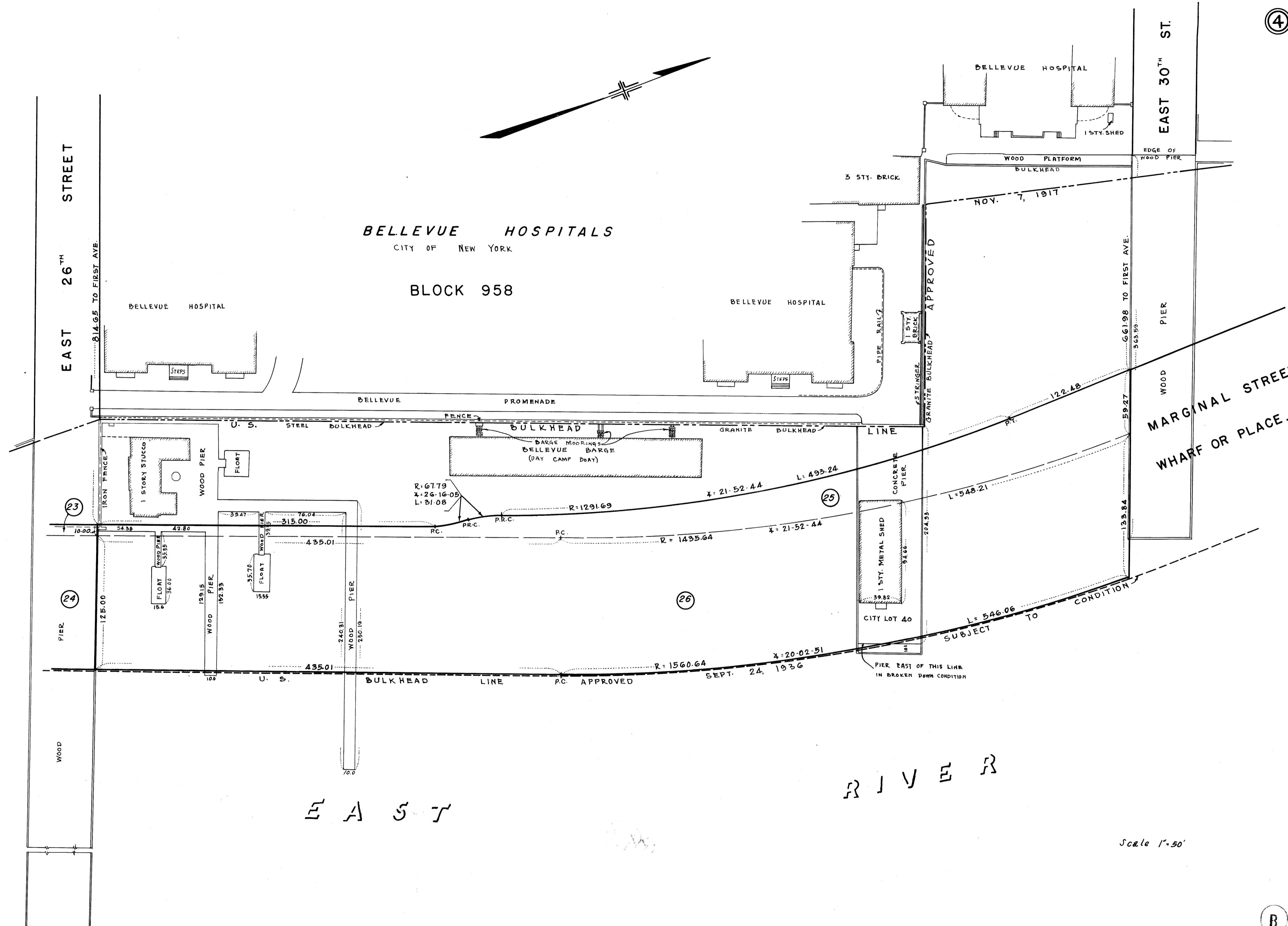
ACC. No. 28445



Drawn 15

Scale 1"=50'

ACC. No. 28445



BELLEVUE HOSPITALS
CITY OF NEW YORK

BLOCK 958

EAST 26TH STREET

EAST 30TH ST.

MARGINAL STREET,
WHARF OR PLACE.

EAST

RIVER

Scale 1"=50'

Drawn 15

ACC. No. 28445 **B**

