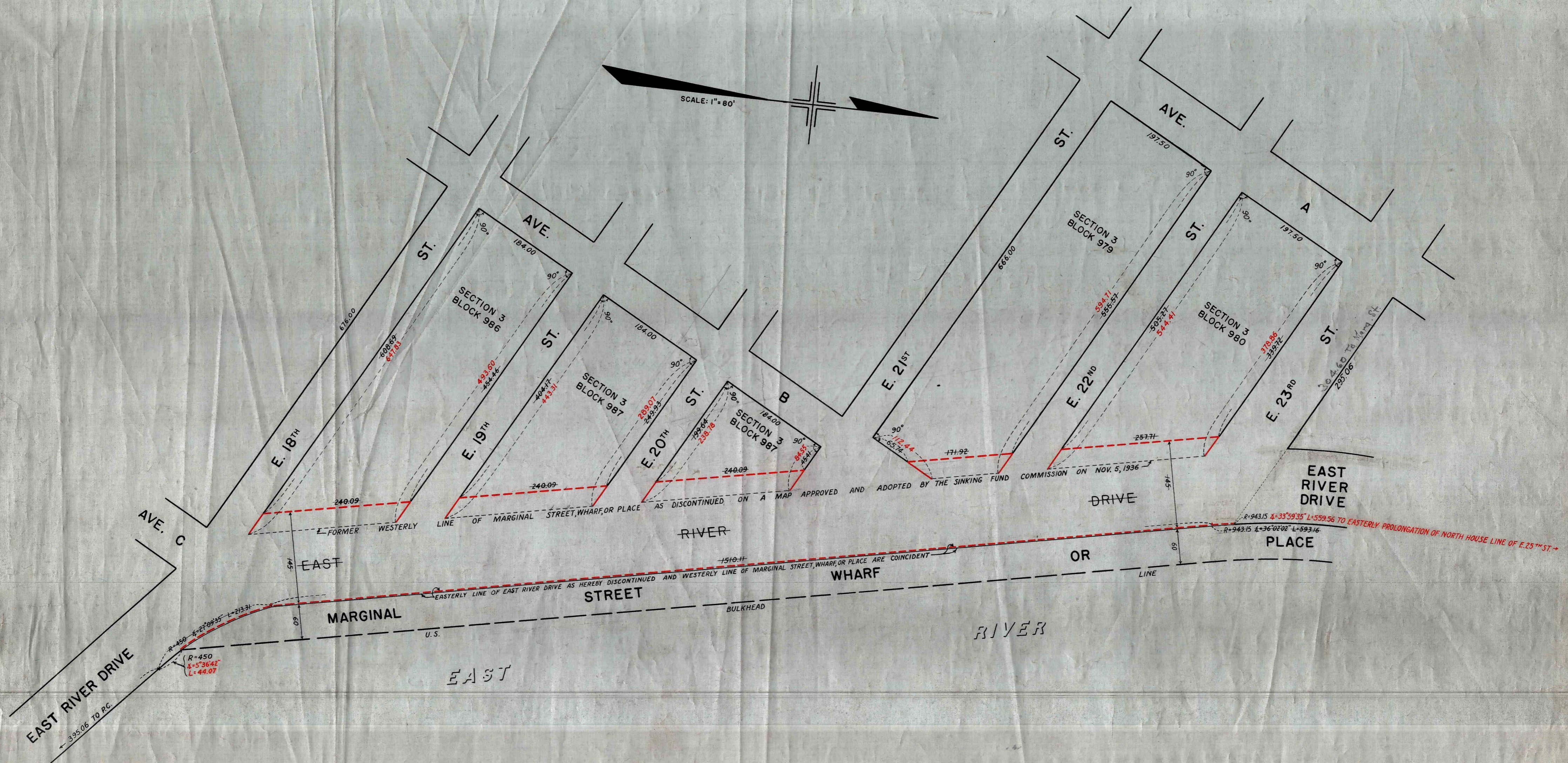
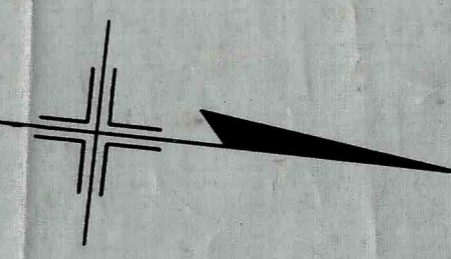


SCALE: 1" = 80'



LEGEND

LINES AND DIMENSIONS PREVIOUSLY ESTABLISHED AND HEREBY RETAINED ARE SHOWN BY FULL BLACK LINES AND BLACK FIGURES. LINES AND DIMENSIONS HEREBY ESTABLISHED ARE SHOWN BY FULL RED LINES AND RED FIGURES. LINES HEREBY DISCONTINUED ARE SHOWN BY DASHED RED LINES. DIMENSIONS PREVIOUSLY ESTABLISHED AND HEREBY ABOLISHED ARE SHOWN BY BLACK FIGURES CROSSED BY A BLACK LINE.

ANNA H. CLARK, SECRETARY OF THE BOARD OF ESTIMATE OF THE CITY OF NEW YORK DO HEREBY CERTIFY THAT THIS MAP IS ONE OF FOUR SIMILAR MAPS ADOPTED BY THE SAID BOARD OF ESTIMATE ON THE 22nd DAY OF SEPTEMBER, 1940. Anna H. Clark SECRETARY, BOARD OF ESTIMATE.

CITY OF NEW YORK OFFICE OF THE PRESIDENT BOROUGH OF MANHATTAN DEPARTMENT OF BOROUGH WORKS

MAP SHOWING A CHANGE IN THE STREET SYSTEM BY ELIMINATING FROM THE CITY MAP THE LINES OF EAST RIVER DRIVE BETWEEN EAST 18TH STREET AND EAST 23RD STREET DATED: MARCH 19, 1940

Signature of President, Borough of Manhattan

Signature of Chief Engineer

Signature of Commissioner of Borough Works

DRAWN BY R.T.G. CHECKED BY W.M.

Signature of Section Engineer

Signature of Engineer of Design

Drawer 39

ACC. No. 28412