

CITY OF NEW YORK
OFFICE OF THE PRESIDENT BOROUGH OF MANHATTAN
DEPARTMENT OF BOROUGH WORKS

DRAFT DAMAGE MAP
IN THE MATTER OF ACQUIRING TITLE FOR
THE WIDENING OF EAST RIVER DRIVE
ON ITS WESTERLY SIDE
FROM
EAST 92ND STREET TO EAST 99TH STREET
AND FOR
THE PUBLIC PARKS
BETWEEN
FIRST AVENUE AND EAST RIVER DRIVE
FROM
EAST 95TH STREET TO EAST 97TH STREET
IN THE BOROUGH OF MANHATTAN
CITY OF NEW YORK

DATED SEPT. 3RD 1942

SCALE: 1"=30'

Edouard Walker Jr.
PRESIDENT BOROUGH OF MANHATTAN

F. Hammond
CHIEF ENGINEER

W. B. Bingham
COMMISSIONER OF BOROUGH WORKS

APPROVED BY THE BOARD OF ESTIMATE ON 1942

SECRETARY, BOARD OF ESTIMATE

SCHEDULE

DAMAGE NO.	BLOCK NO.	LOT NO.	AREA TO BE ACQUIRED - SQ. FT.	REMAINING AREA SQ. FT.	OWNER	REMARKS
1	1572	23	4.6	2,245.4	PRIVATE	
2	1572	24	5.46	2,295.4	PRIVATE	
3	1572	25	17.27	2,177.3	PRIVATE	
4	1572	26	35.27	1,936.5	PRIVATE	
5	1572	27	55.93	1,165.0	PRIVATE	
6	1572	28	79.29	799.6	PRIVATE	
7	1572	29	1,094.0	330.2	PRIVATE	
8	1573	18	158.0	3,460.0	CITY OF NEW YORK	
9	1573	18	7254.6		CITY OF NEW YORK	
10	1573	14	31.3	10,039.7	PRIVATE	OUTSHORE OF RANDEL LINE
11	1573	1	4,267.0	59,987.0	PRIVATE	OUTSHORE OF RANDEL LINE
12	1574	16	7,274.2	0.0	CITY OF NEW YORK	OUTSHORE OF RANDEL LINE
13	1574	108	13,058.0	6,689.1	PRIVATE	OUTSHORE OF RANDEL LINE
14	1574	12	430.0	9,639.3	PRIVATE	OUTSHORE OF RANDEL LINE
15	1575	1	27,391.8	0.0	PRIVATE	FOR PARK PURPOSES-OUTSHORE OF RANDEL LINE
16	1575	1	2,1757.1	0.0	PRIVATE	OUTSHORE OF RANDEL LINE
17	1690	1	12,658.4	0.0	PRIVATE	FOR PARK PURPOSES-OUTSHORE OF RANDEL LINE
18	1690	1	4,296.1	0.0	PRIVATE	OUTSHORE OF RANDEL LINE
19	1690	45	13,187.2	0.0	PRIVATE	FOR PARK PURPOSES-OUTSHORE OF RANDEL LINE
20	1690	45	3,767.3	0.0	PRIVATE	OUTSHORE OF RANDEL LINE
21	1691	1	6,118.5	37,224.5	PRIVATE	OUTSHORE OF RANDEL LINE
22	1692	1	6,761.3	57,905.0	PRIVATE	OUTSHORE OF RANDEL LINE

TABLE OF ASSESSED VALUATIONS (CORRECTED AS OF 1945)

DAMAGE NO	BLOCK NO	LOT NO	ASSESSED VALUATION OF BUILDINGS *				ASSESSED VALUATION OF LAND •			REMARKS
			1943	1944	1945	1943	1944	1945		
1	1572	23	—	—	—	20.	19.	17.	PRIVATE	
2	1572	24	—	—	—	232.	220.	180.	"	
3	1572	25	—	—	—	735.	700.	570.	"	
4	1572	26	—	—	—	1,675.	1,580.	1,380.	"	
5	1572	27	—	—	—	2,592.	2,430.	2,025.	"	
6	1572	28	—	—	—	3,976.	3,728.	3,106.	"	
7	1572	29	—	—	—	8,085.	7,700.	6,160.	"	
8	1573	18	—	—	—	770.	770.	770.	CITY OF NEW YORK	
9	1573	18	—	—	—	35,350.	35,350.	35,350.	"	
10	1573	14	35,000.	30,000.	30,000.	93.	93.	93.	PRIVATE	
11	1573	1	20,000.	15,000.	15,000.	15,272.	15,272.	15,139.	"	
12	1574	16	—	—	—	55,000.	55,000.	55,000.	CITY OF NEW YORK	
13	1574	108	34,000.	31,000.	31,000.	38,048.	38,048.	38,048.	PRIVATE	
14	1574	12	12,000.	10,000.	10,000.	1,153.	1,153.	1,153.	"	
15	1575	1	750,000.	750,000.	750,000.	147,600.	147,600.	147,600.	PRIVATE - FOR PARK PURPOSES	
16	1575	1	750,000.	750,000.	750,000.	117,400.	117,400.	117,400.	PRIVATE	
17	1690	1	33,000.	28,000.	28,000.	42,580.	42,580.	42,580.	PRIVATE - FOR PARK PURPOSES	
18	1690	1	33,000.	28,000.	28,000.	14,420.	14,420.	14,420.	PRIVATE	
19	1690	45	500.	500.	200.	44,290.	44,290.	44,290.	PRIVATE - FOR PARK PURPOSES	
20	1690	45	500.	500.	200.	12,710.	12,710.	12,710.	PRIVATE	
21	1691	1	35,000.	25,000.	25,000.	18,330.	18,330.	18,330.	"	
22	1692	1	500.	500.	500.	17,765.	17,765.	17,765.	PRIVATE	

* VALUATIONS OF BUILDINGS AS GIVEN IN ABOVE TABLE ARE TOTAL VALUATIONS OF IMPROVEMENTS ON EVERY TAX LOT.
 • LAND VALUATIONS AS GIVEN IN ABOVE TABLE REFER TO THE DAMAGE PARCELS AND ARE PRO-RATED ACCORDING TO THE AREA OF THE PARCEL TO BE ACQUIRED.

FIRST

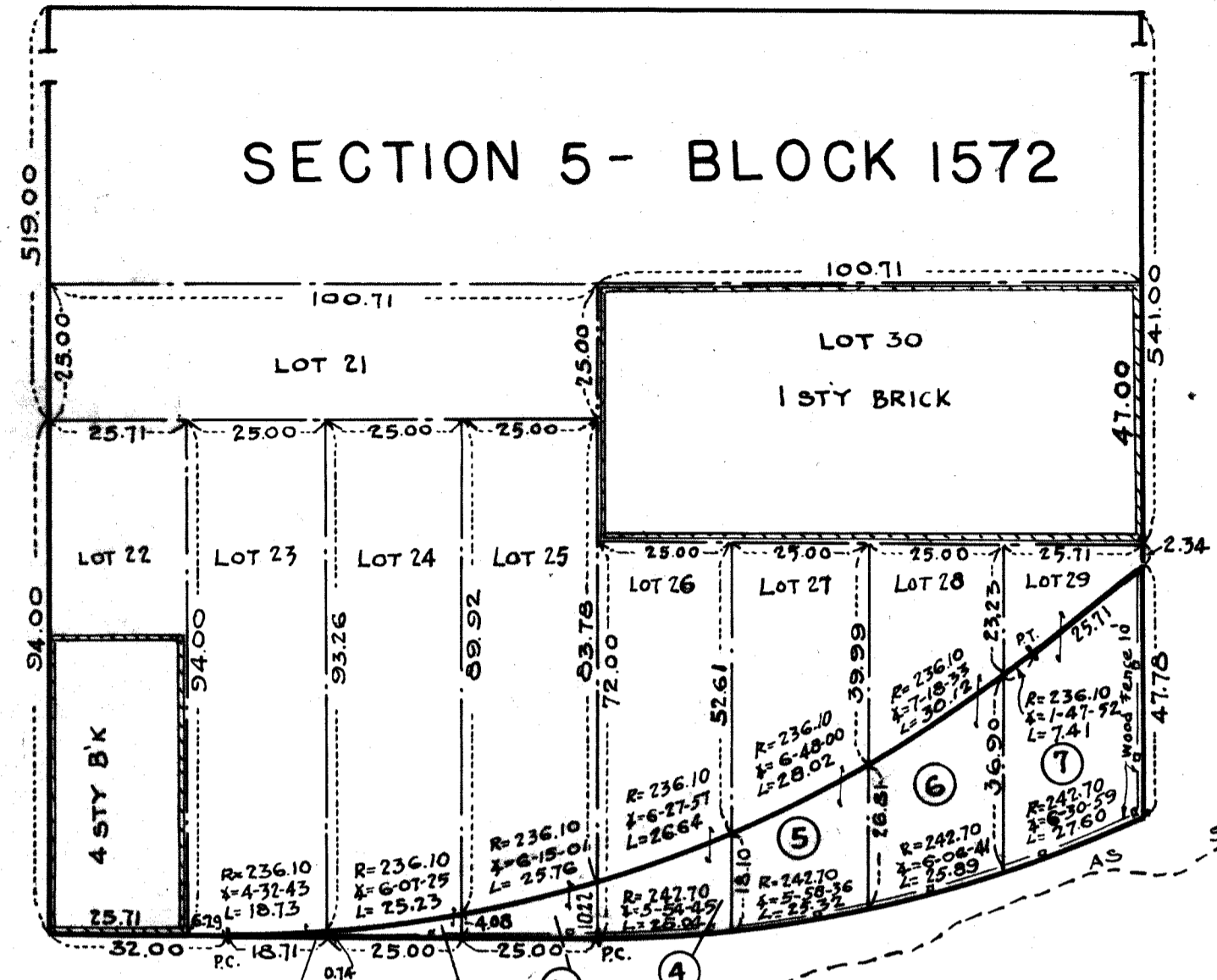
AVENUE

①

EAST 92ND STREET

EAST 93RD STREET

SECTION 5 - BLOCK 1572



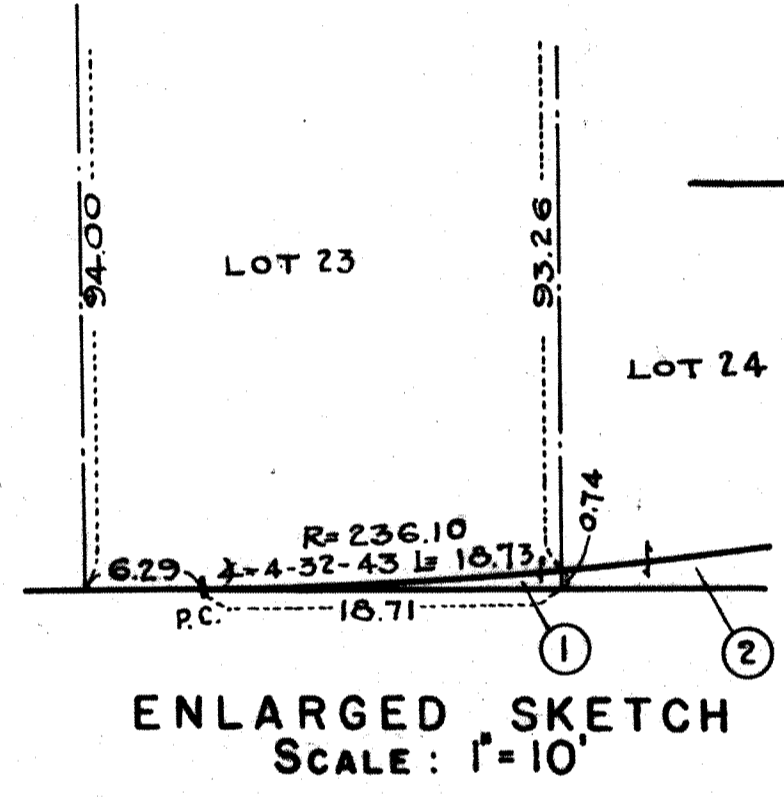
DRIVE

RIVER

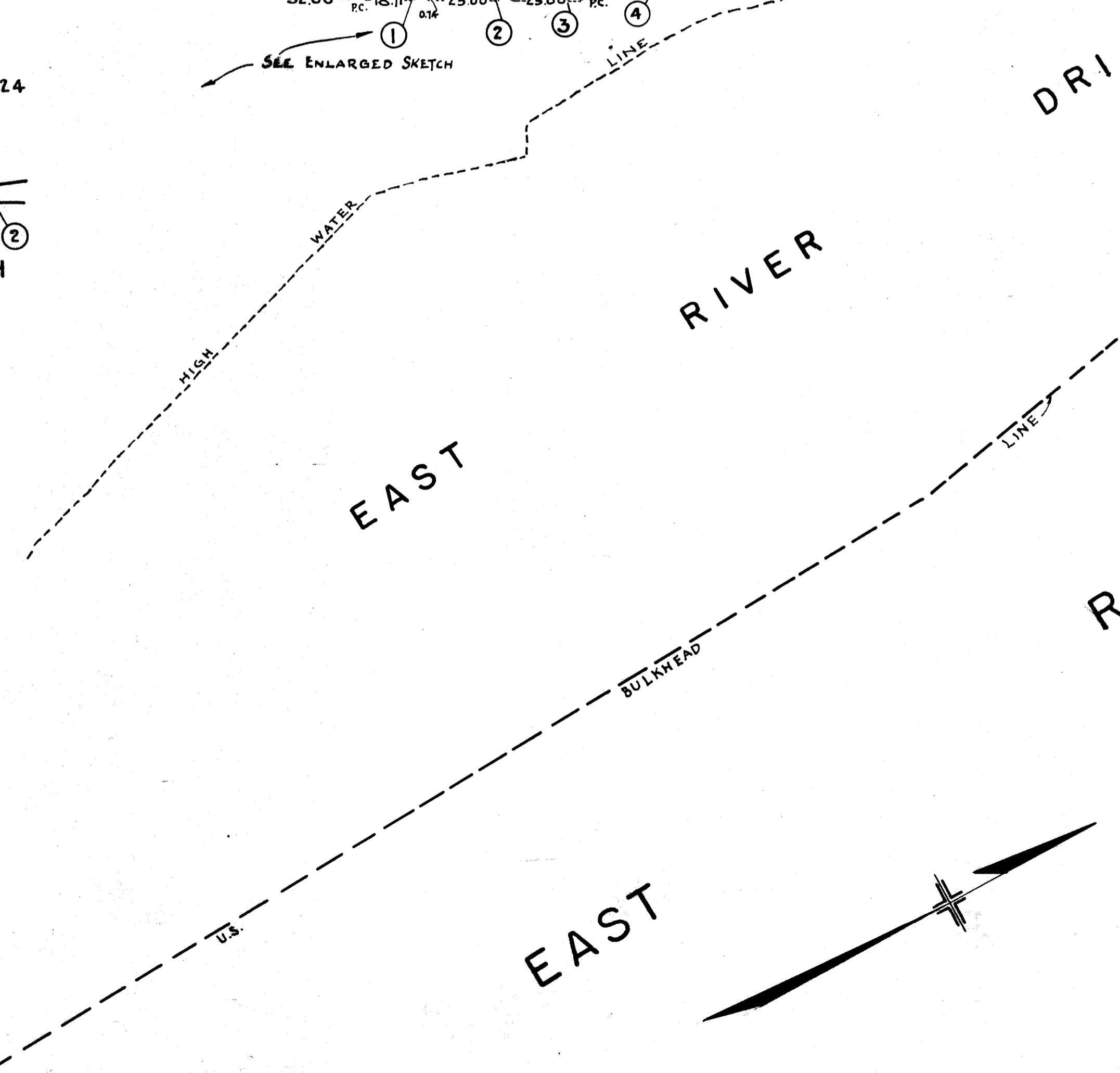
EAST

RIVER

EAST



SEE ENLARGED SKETCH



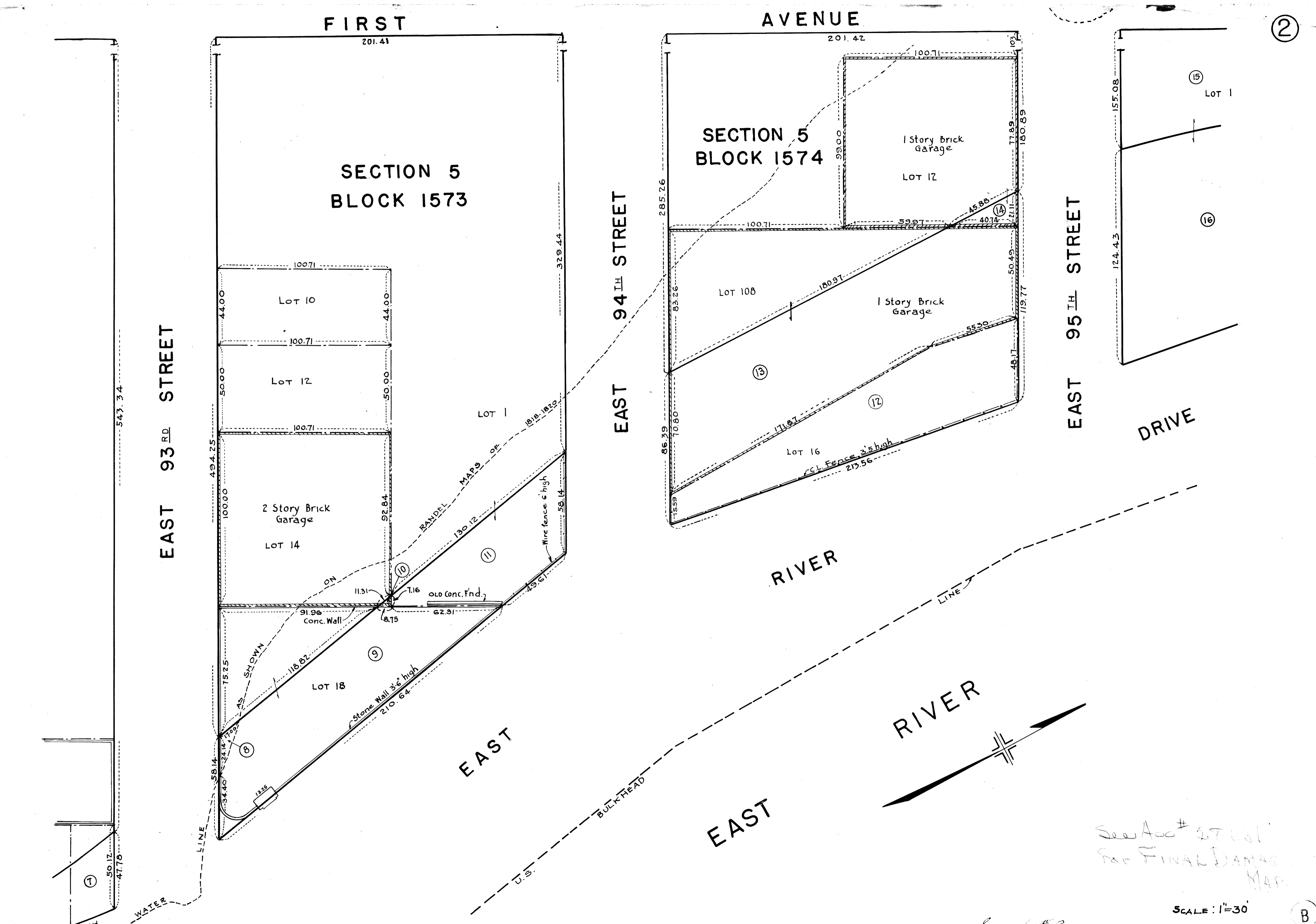
SCALE: 1"=30'

ⓑ

ACC. No. 28418

Drawn 15

Sheet 6-#1



FIRST AVENUE

FIRST AVENUE

EAST 93RD STREET

EAST 94TH STREET

EAST 95TH STREET

DRIVE

SECTION 5
BLOCK 1573

SECTION 5
BLOCK 1574

LOT 10

LOT 12

LOT 14

LOT 18

LOT 1

LOT 108

1 Story Brick
Garage

LOT 12

LOT 16

LOT 1

LOT 1

RIVER

RIVER

EAST

EAST

See Acc # 27001
for FINAL DAMAGE
MAP

SCALE: 1"=30'

ACC. No. 28413

Sheet 6 of 2

2

B

3

HIGH WATER LINE AS SHOWN ON RANDOL MAPS 1898-1820

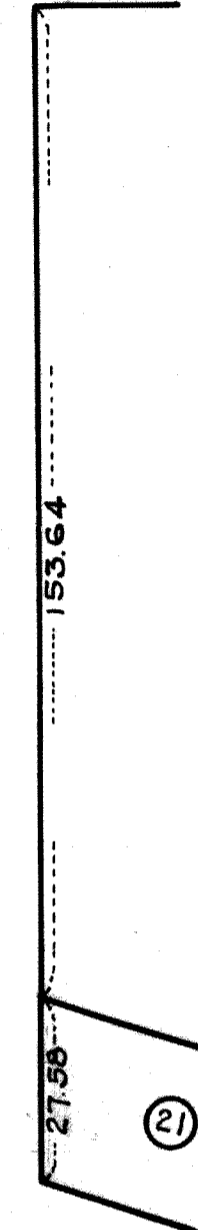
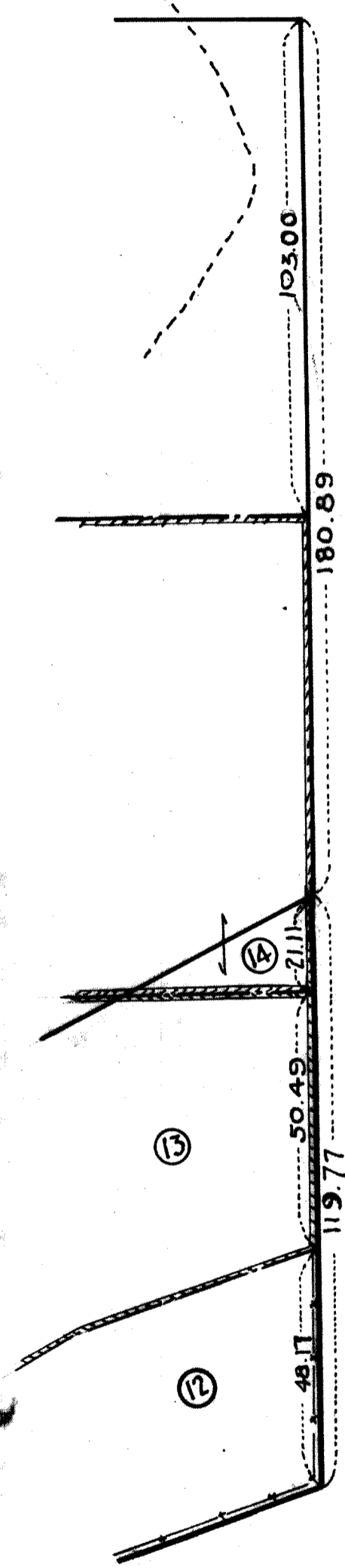
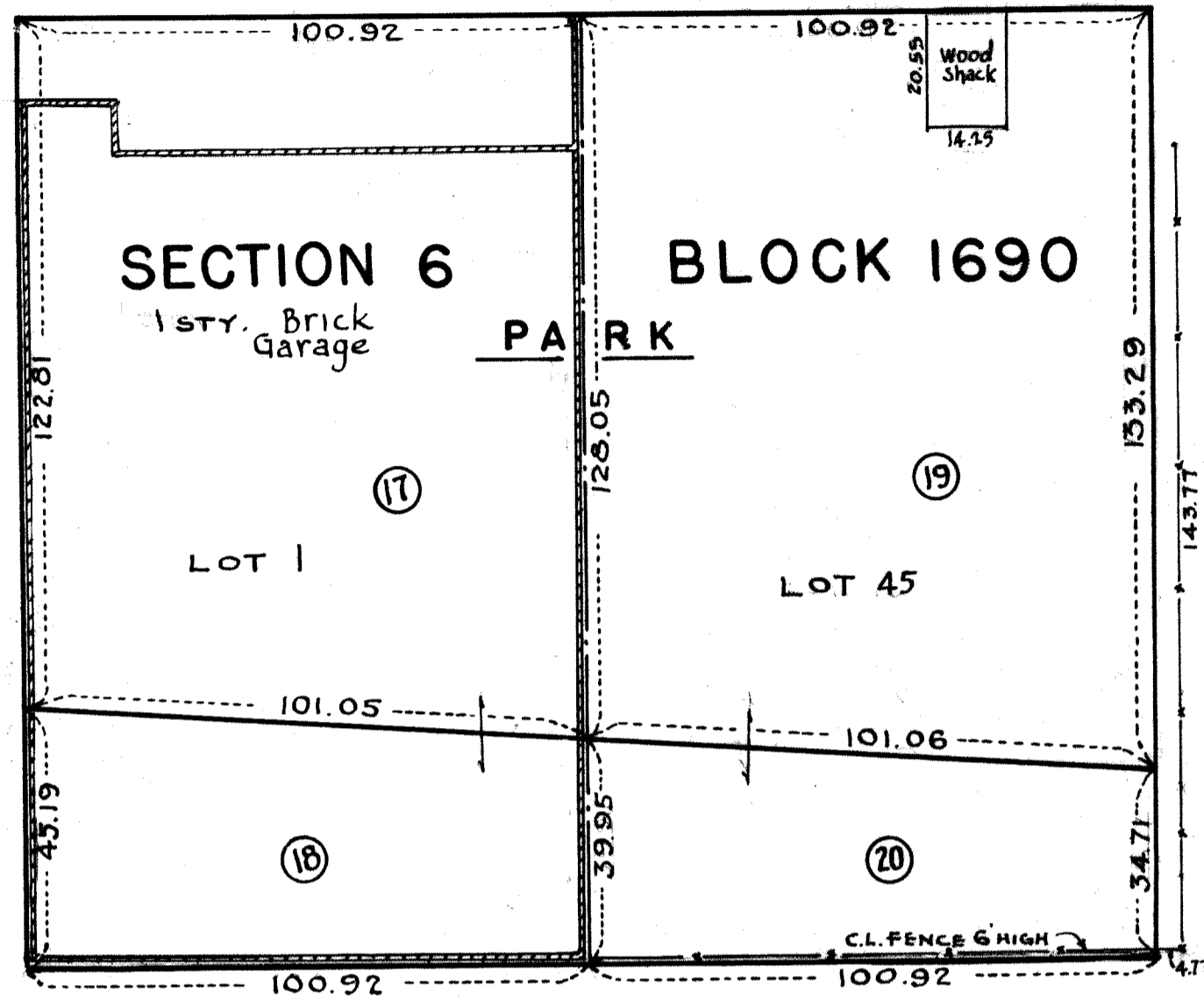
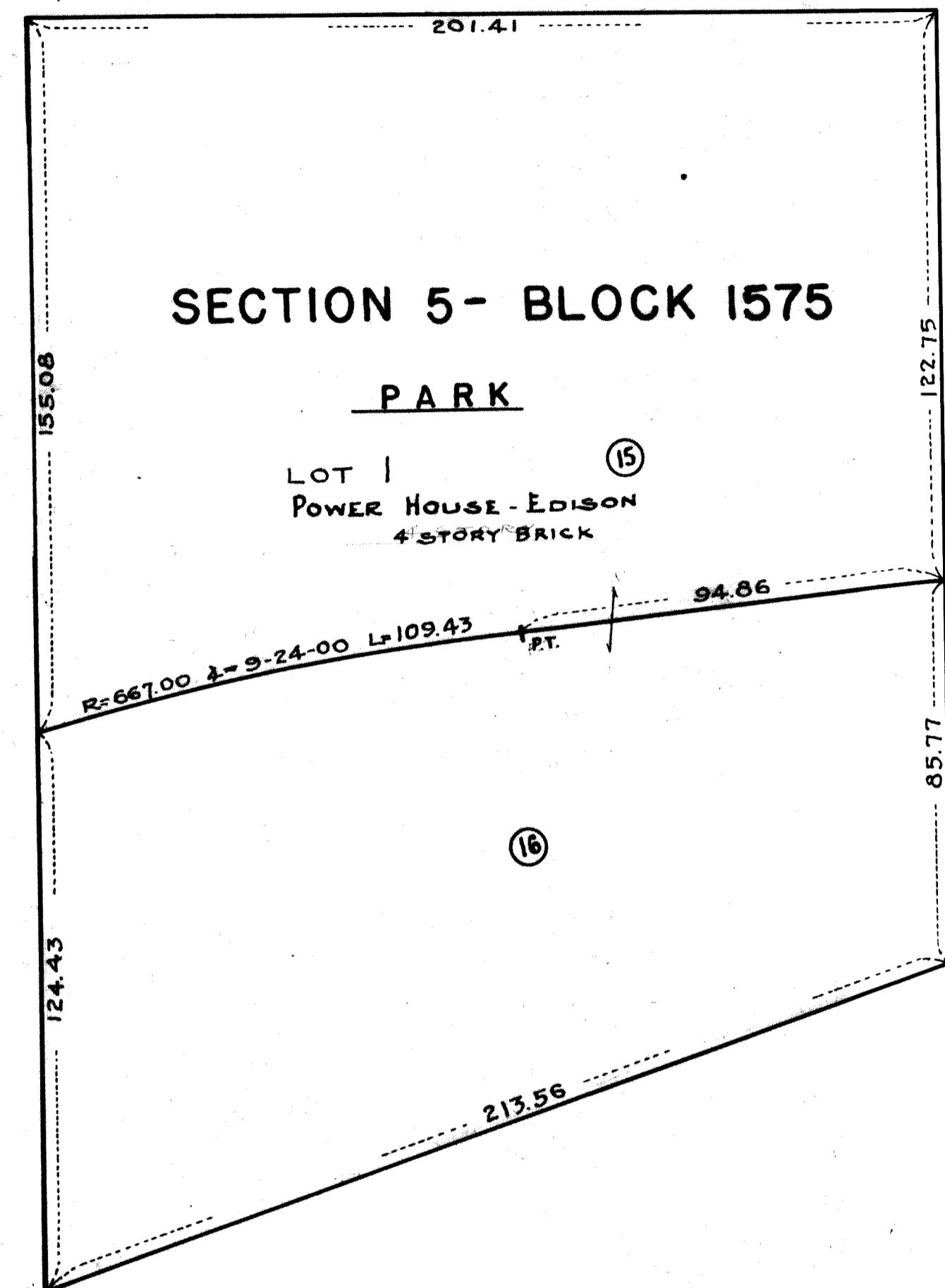
FIRST AVENUE

AVENUE

EAST 95th STREET

EAST 96th STREET

EAST 97th STREET



RIVER DRIVE

EAST

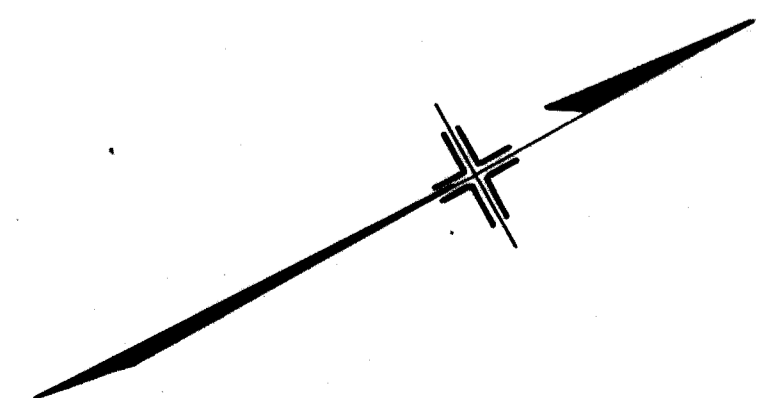
RIVER

EAST

BULKHEAD

LINE

U.S.



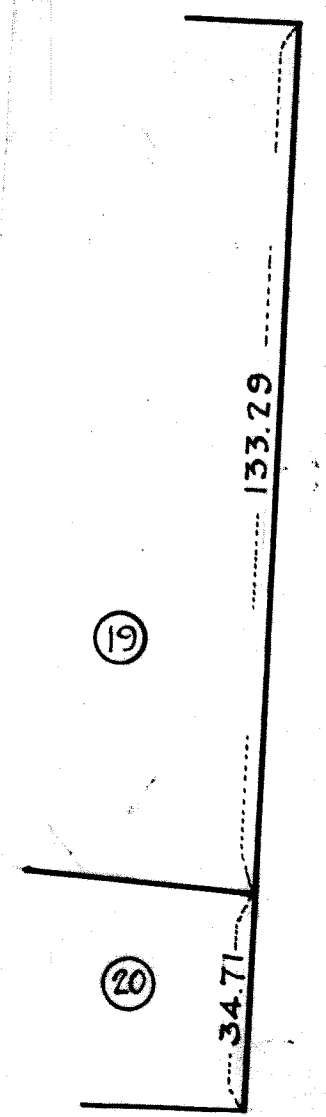
SCALE: 1"=30'

ACC. No. 28419

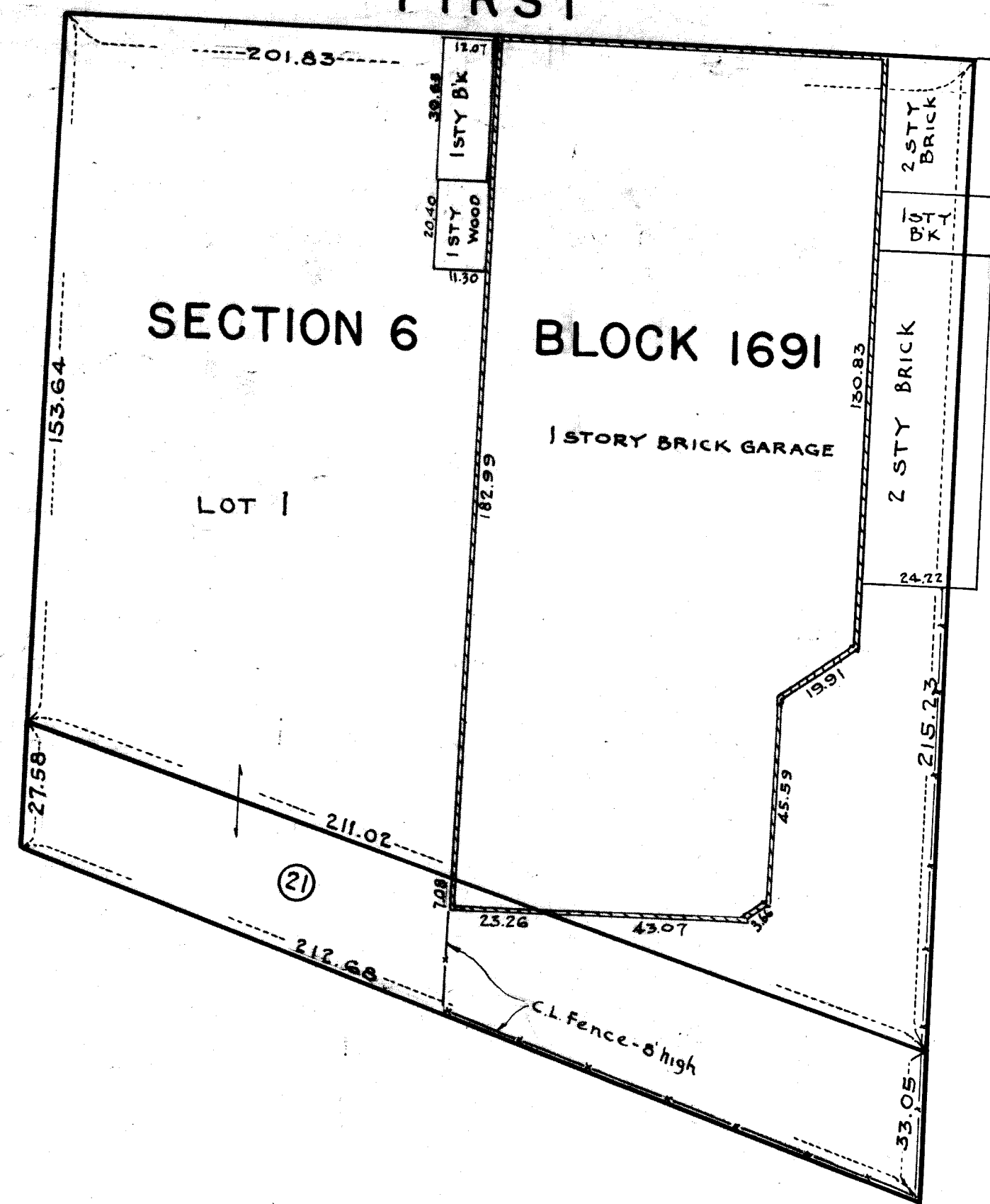
B

Sheet 6 of 3

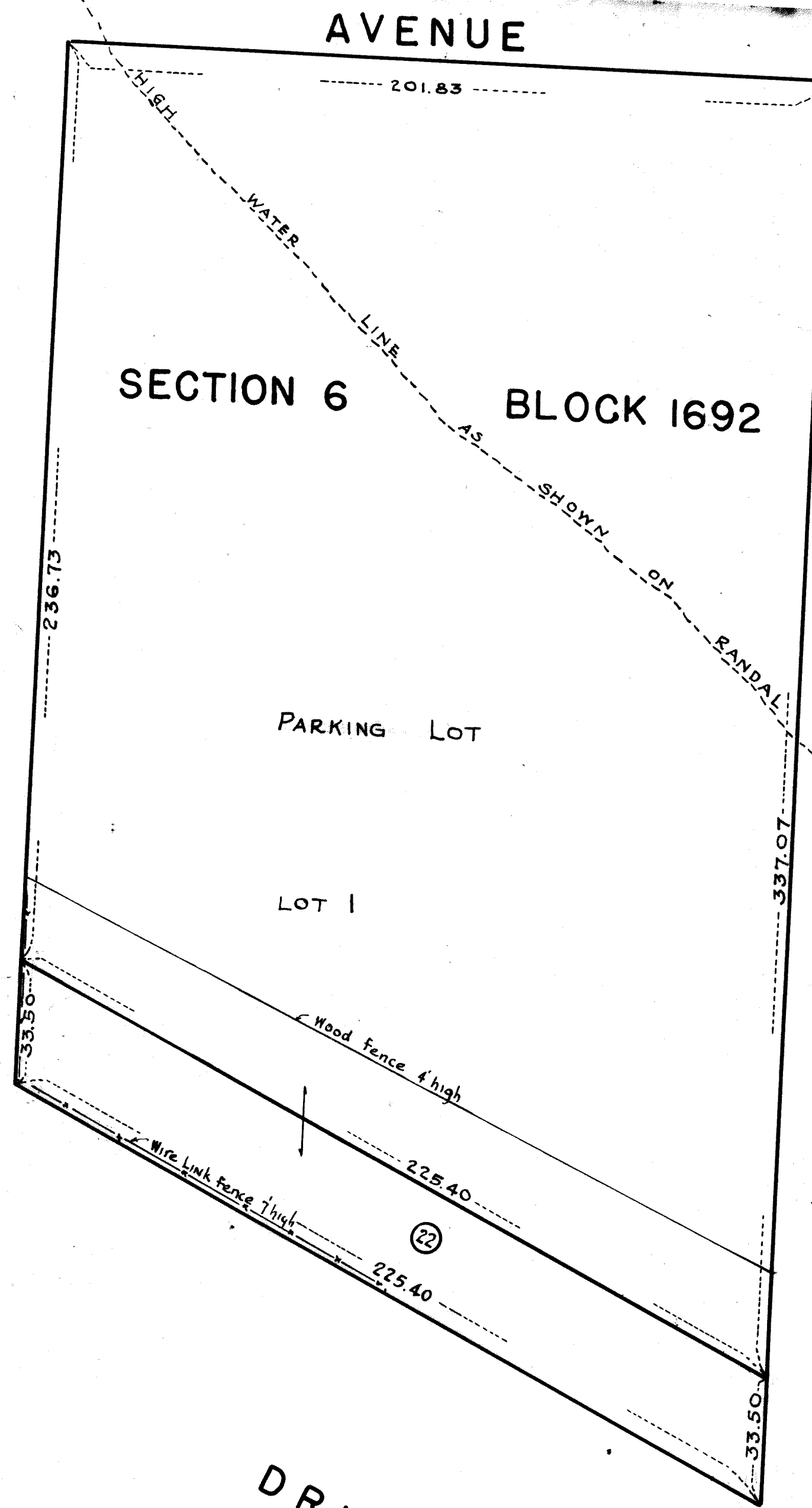
Drawn 15



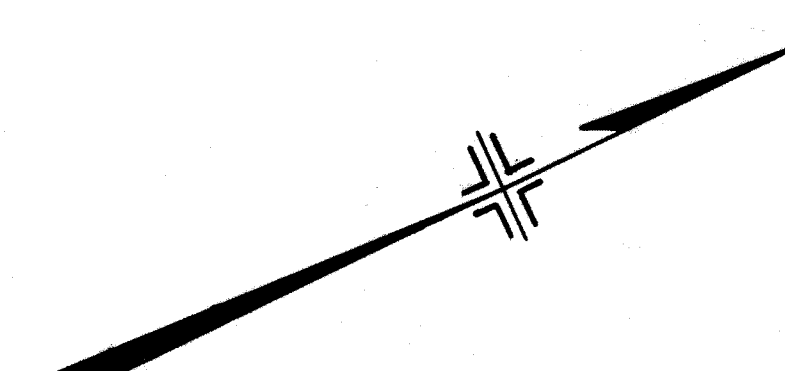
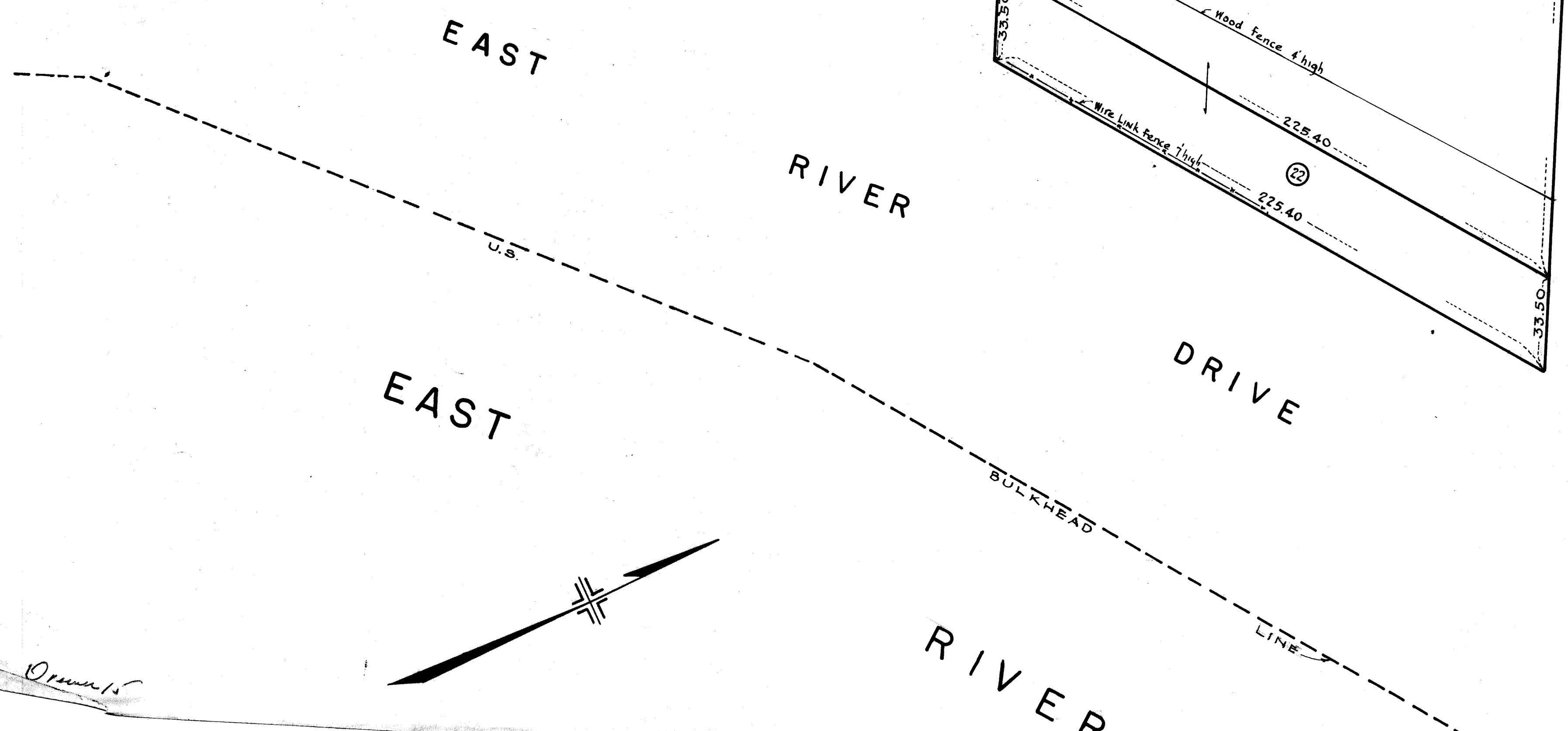
EAST 97th STREET



EAST 98th STREET



EAST 99th STREET



4

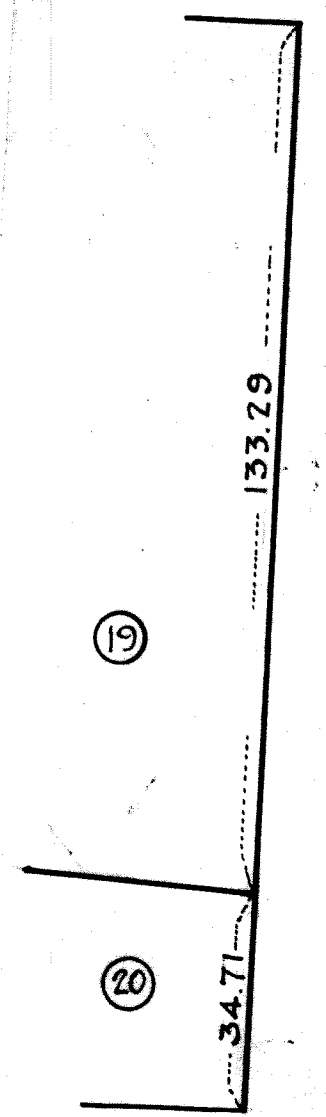
SCALE: 1"=30'

B

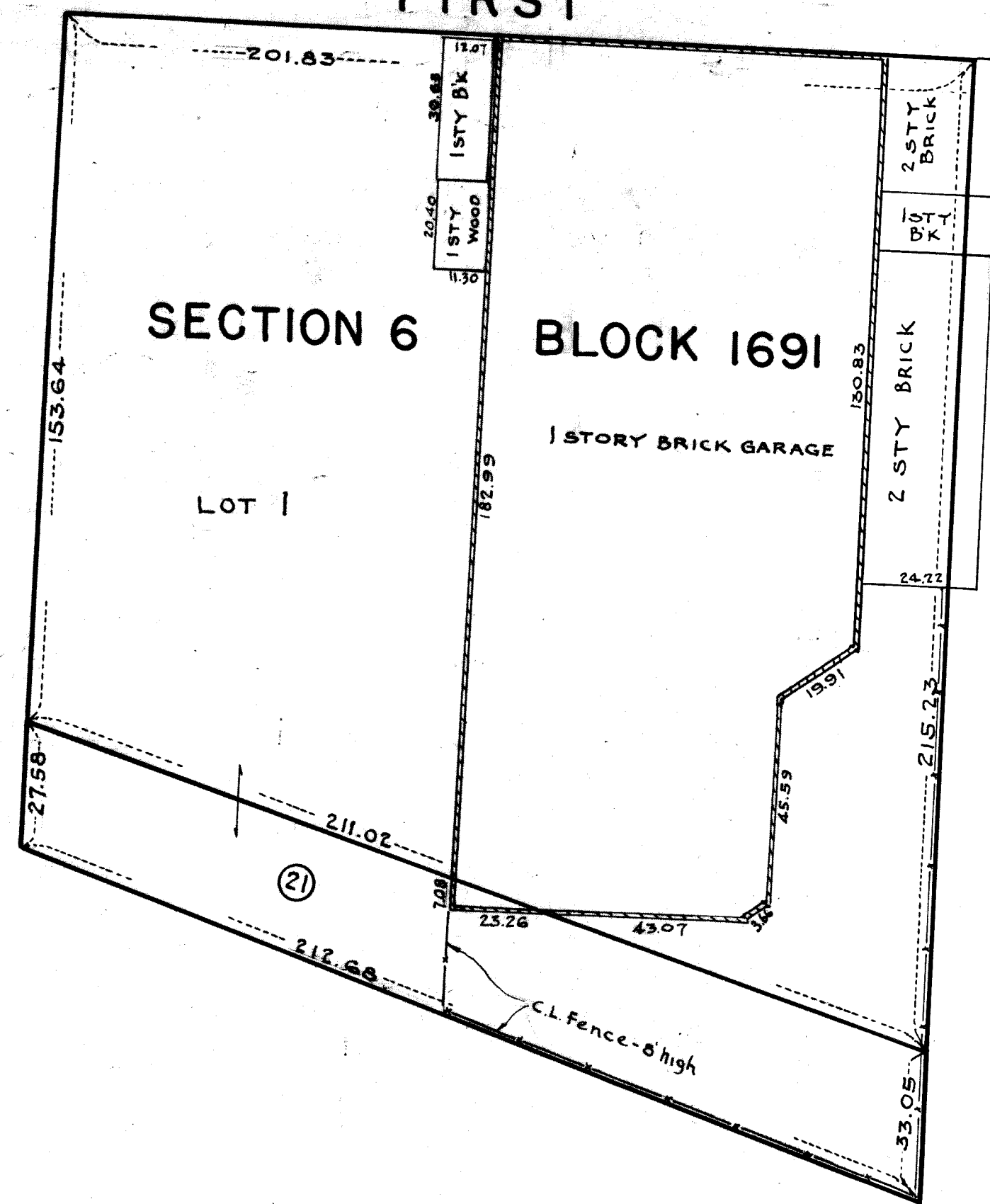
ACC. No. 28413

Sheet 6-4

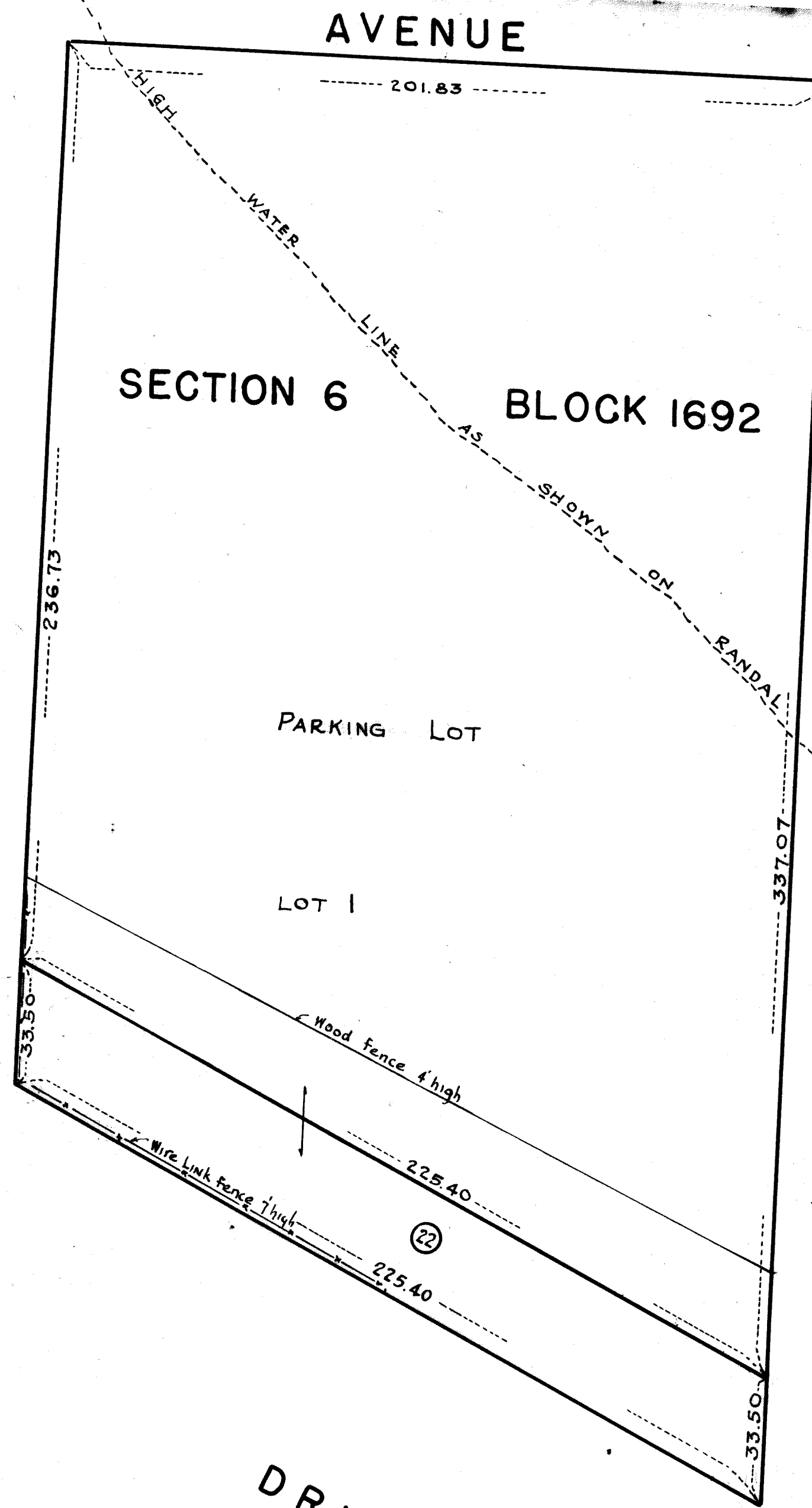
Orman 15



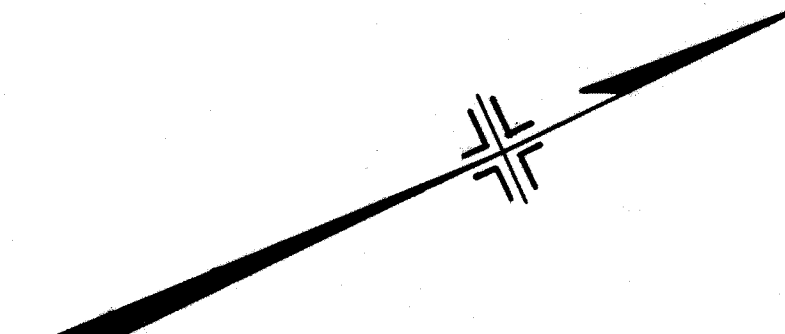
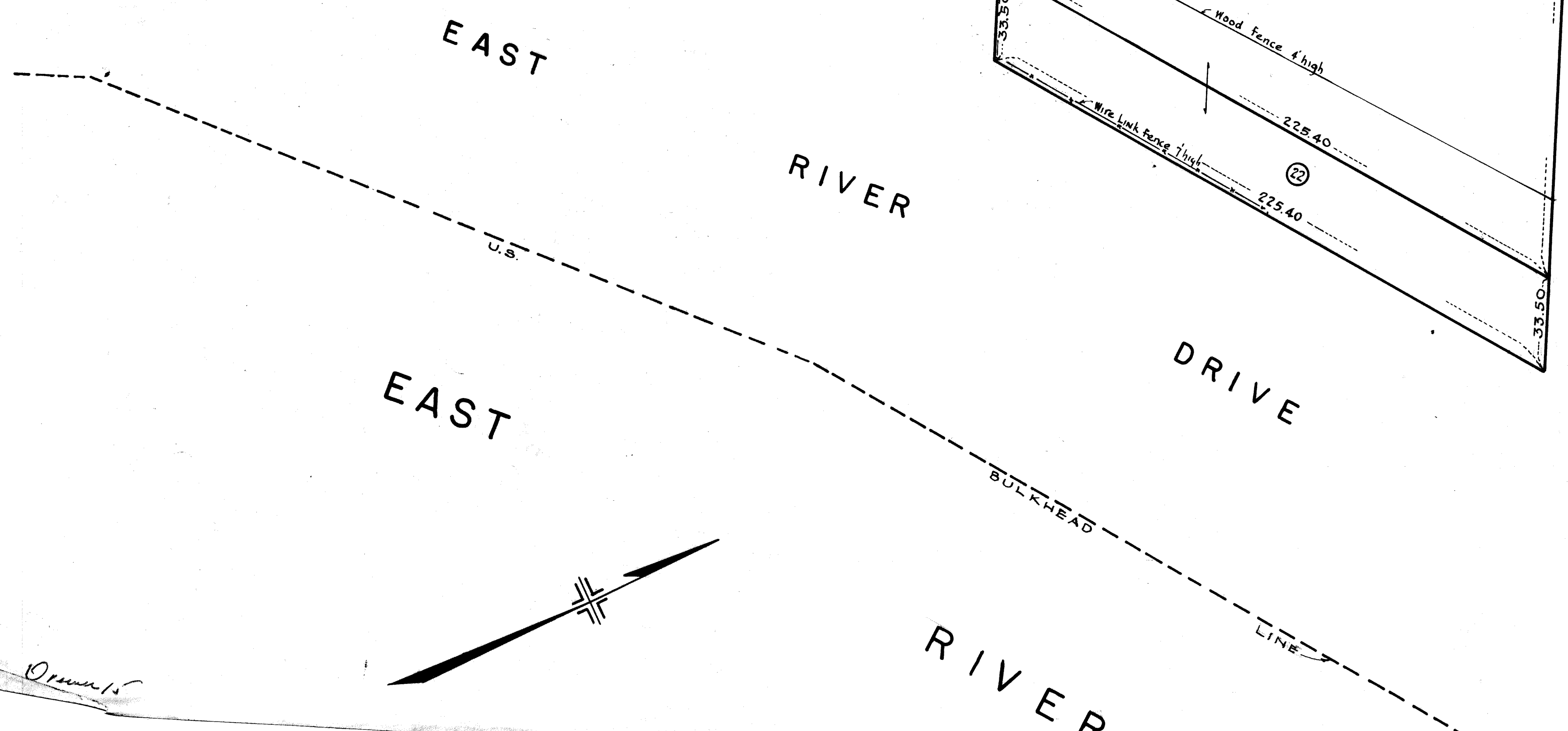
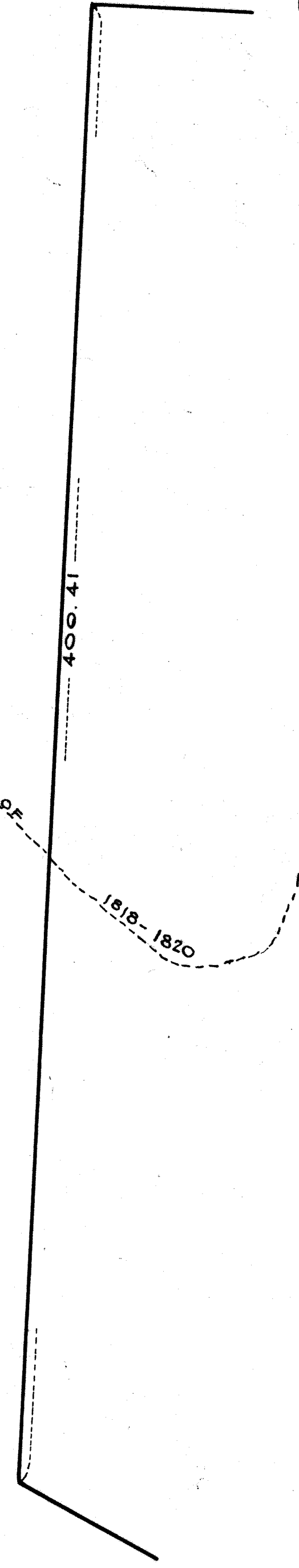
EAST 97 TH STREET



EAST 98 TH STREET



EAST 99 TH STREET



Ormsby

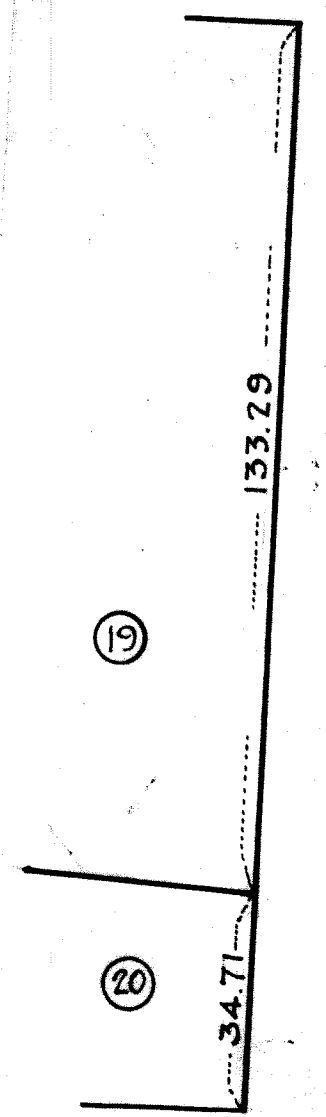
Sheet 6-4

SCALE: 1"=30'

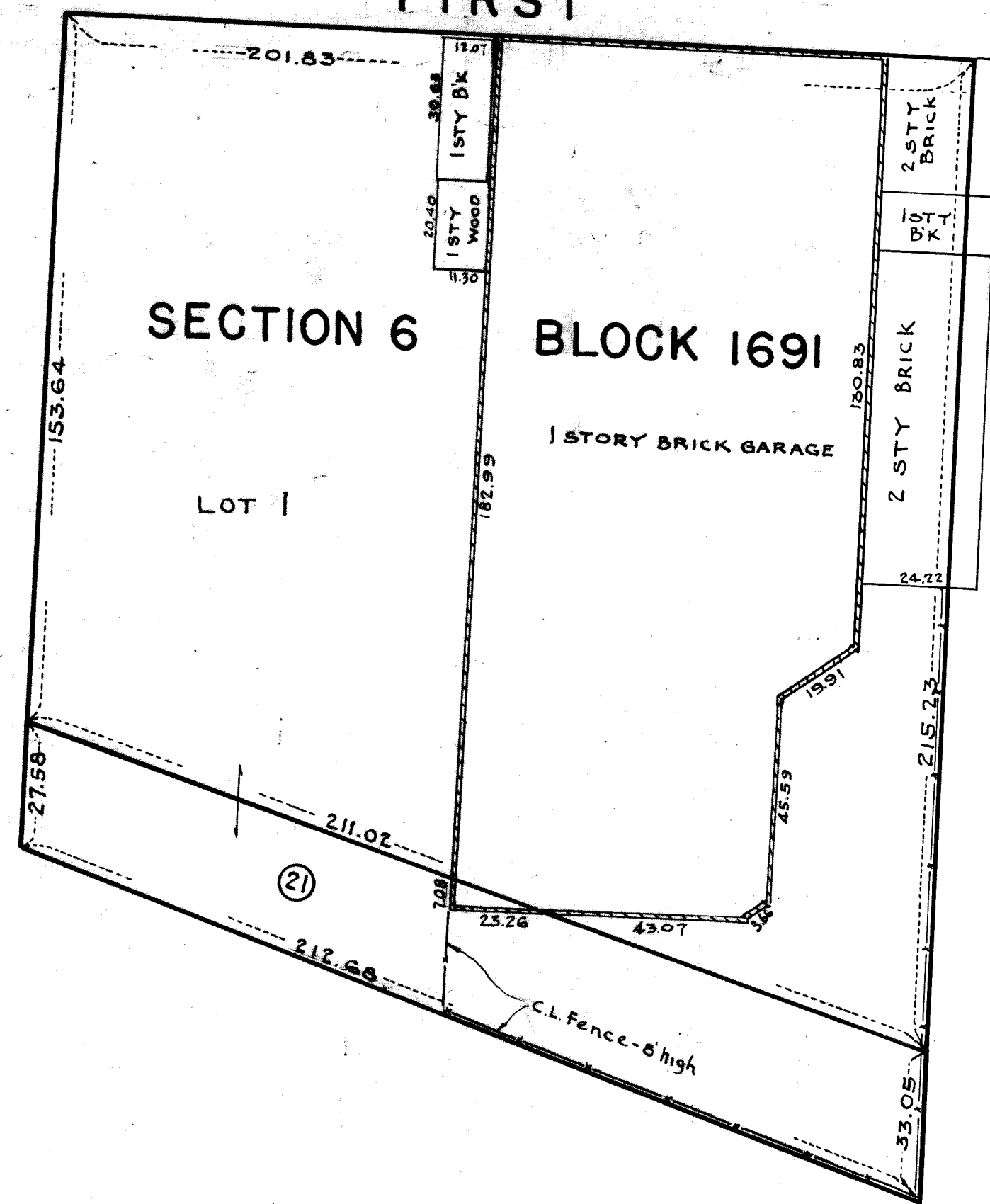
ACC. No. 28413

4

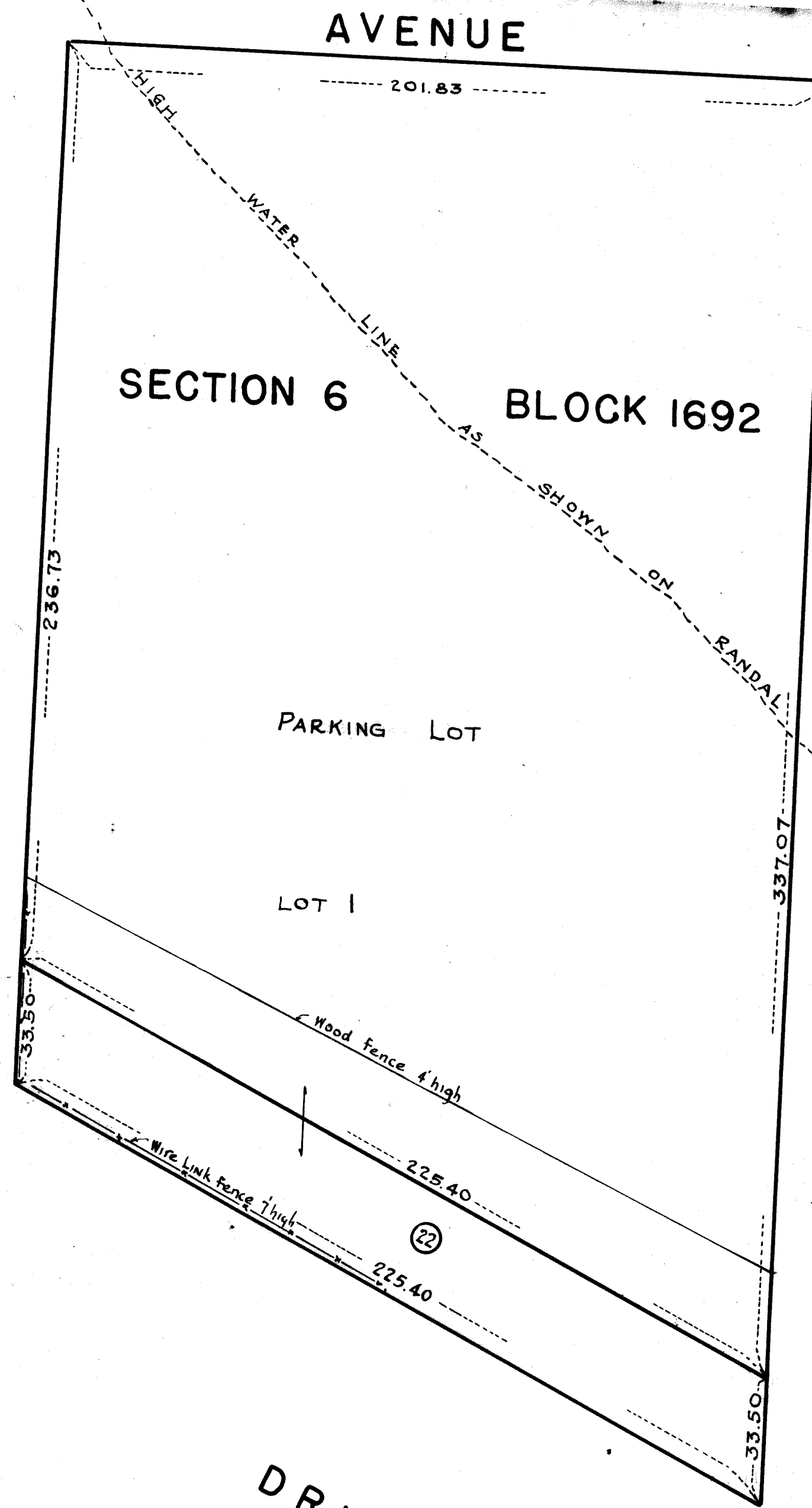
B



EAST 97 TH STREET



EAST 98 TH STREET



EAST 99 TH STREET

4

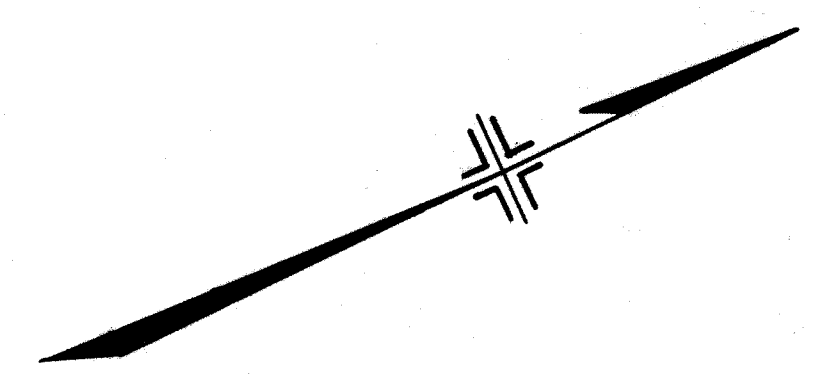
EAST

RIVER

EAST

DRIVE

RIVER



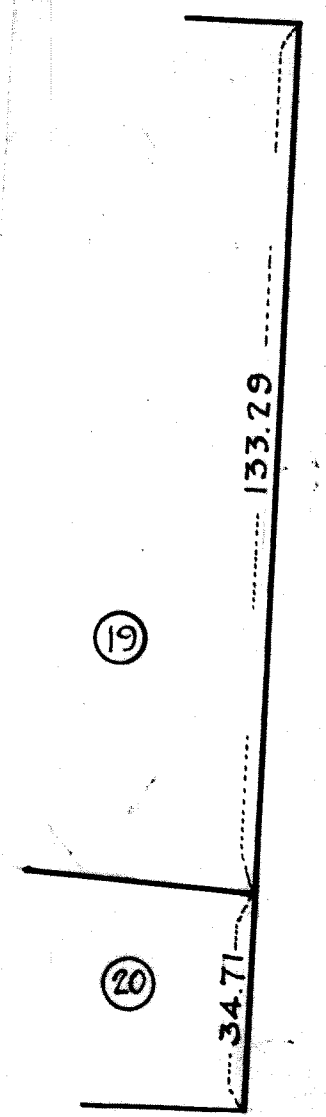
Orman

Sheet 6-4

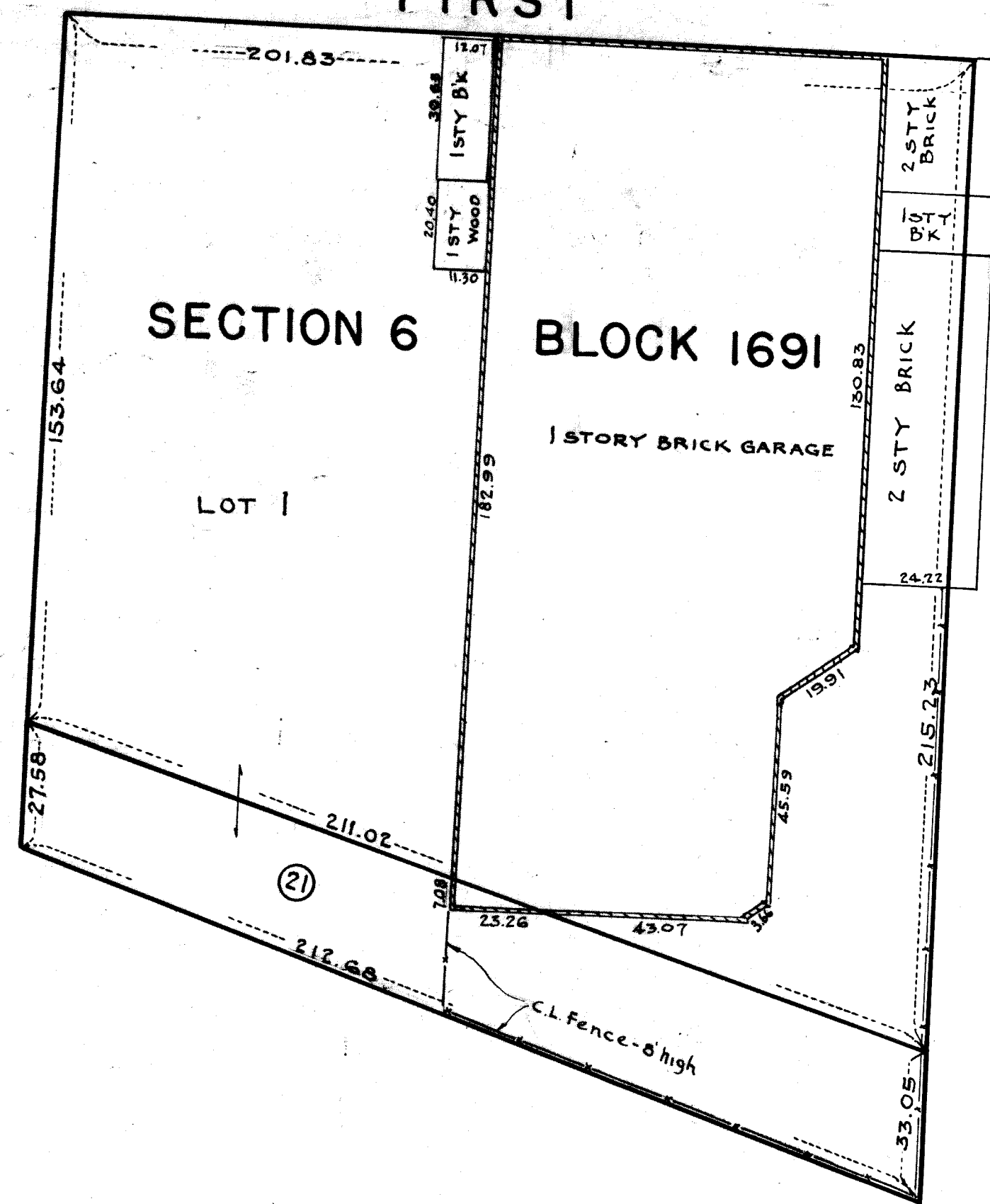
SCALE: 1"=30'

B

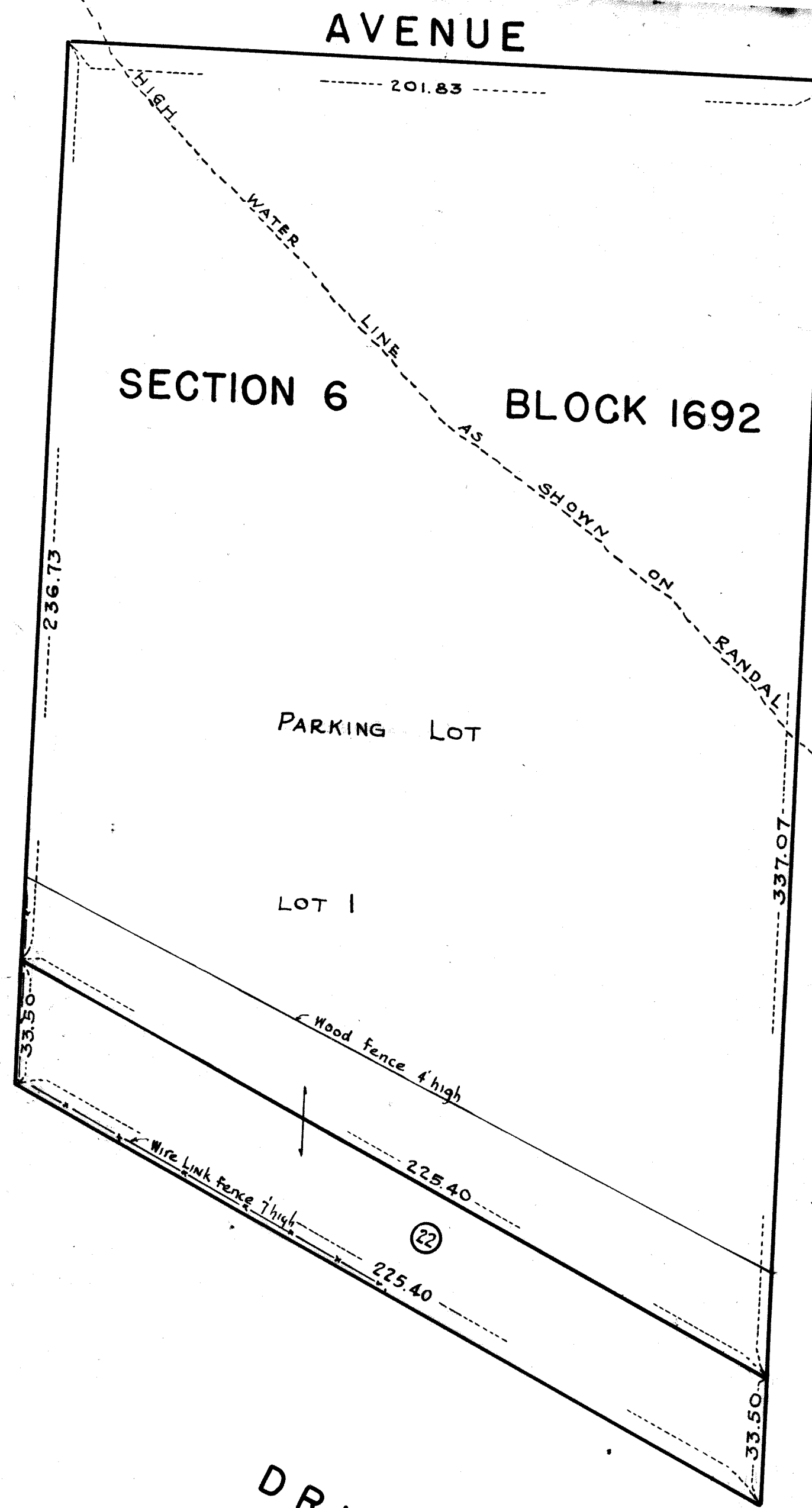
ACC. No. 28413



EAST 97 TH STREET



EAST 98 TH STREET



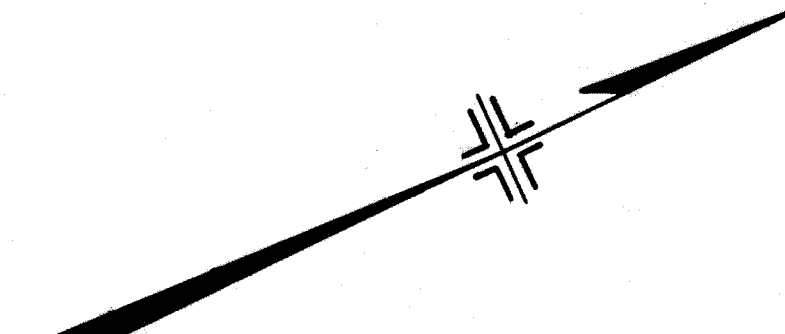
EAST 99 TH STREET

4

EAST RIVER DRIVE

EAST RIVER

BULKHEAD LINE

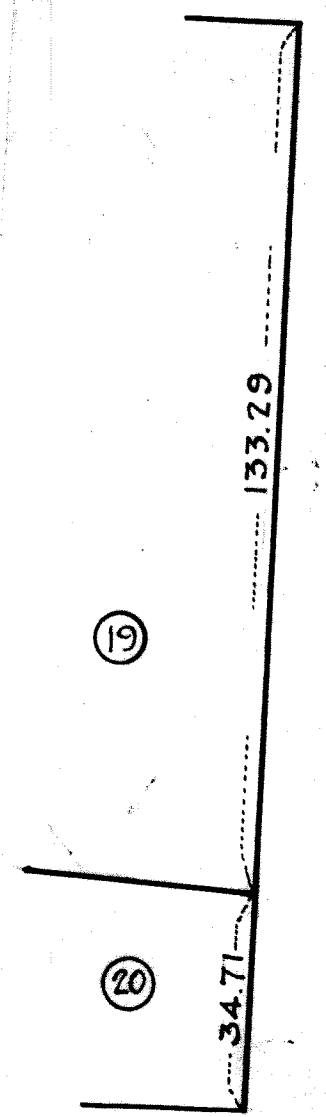


Orman's

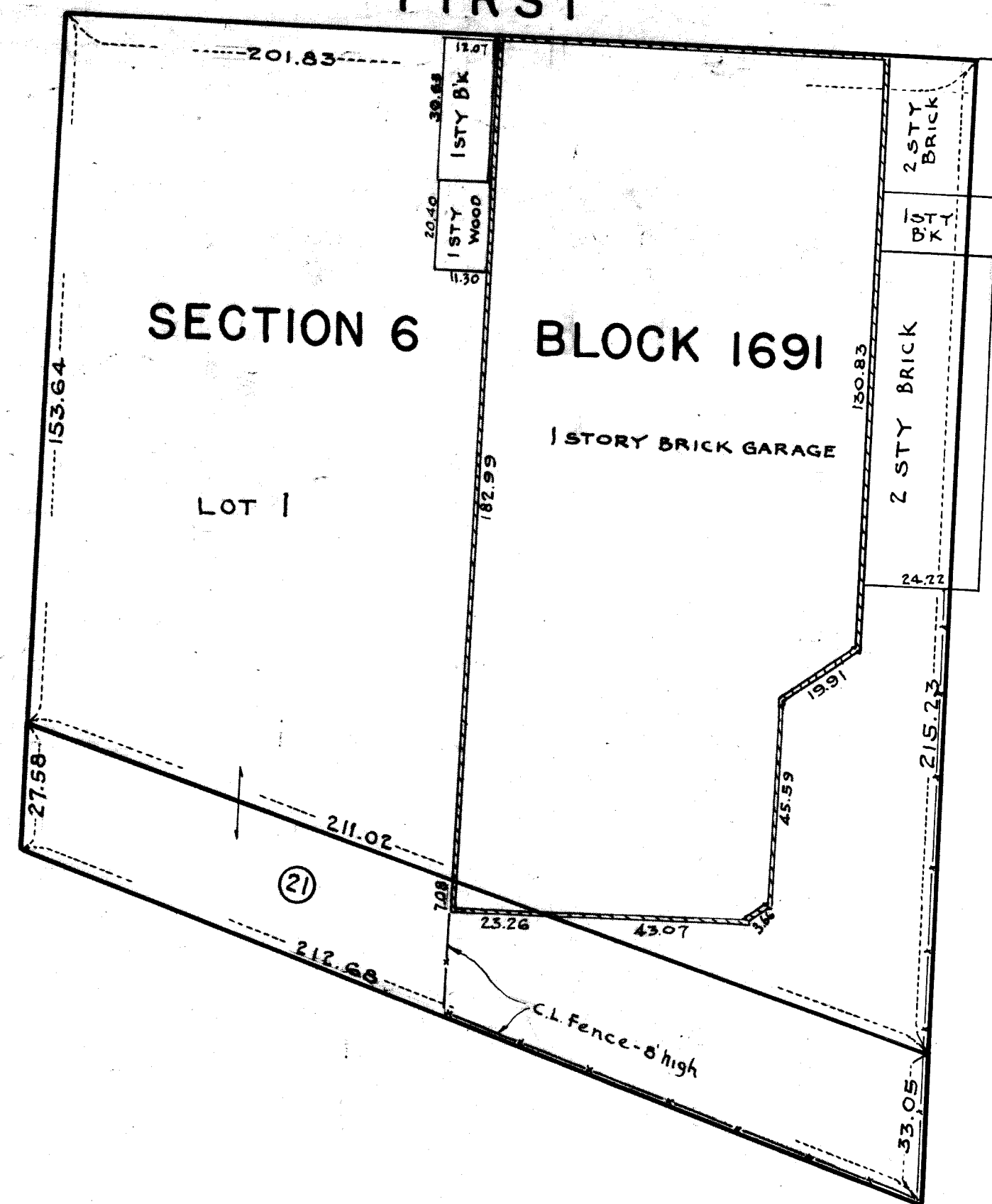
Sheet 6-4

SCALE: 1"=30'
ACC. No. 28413

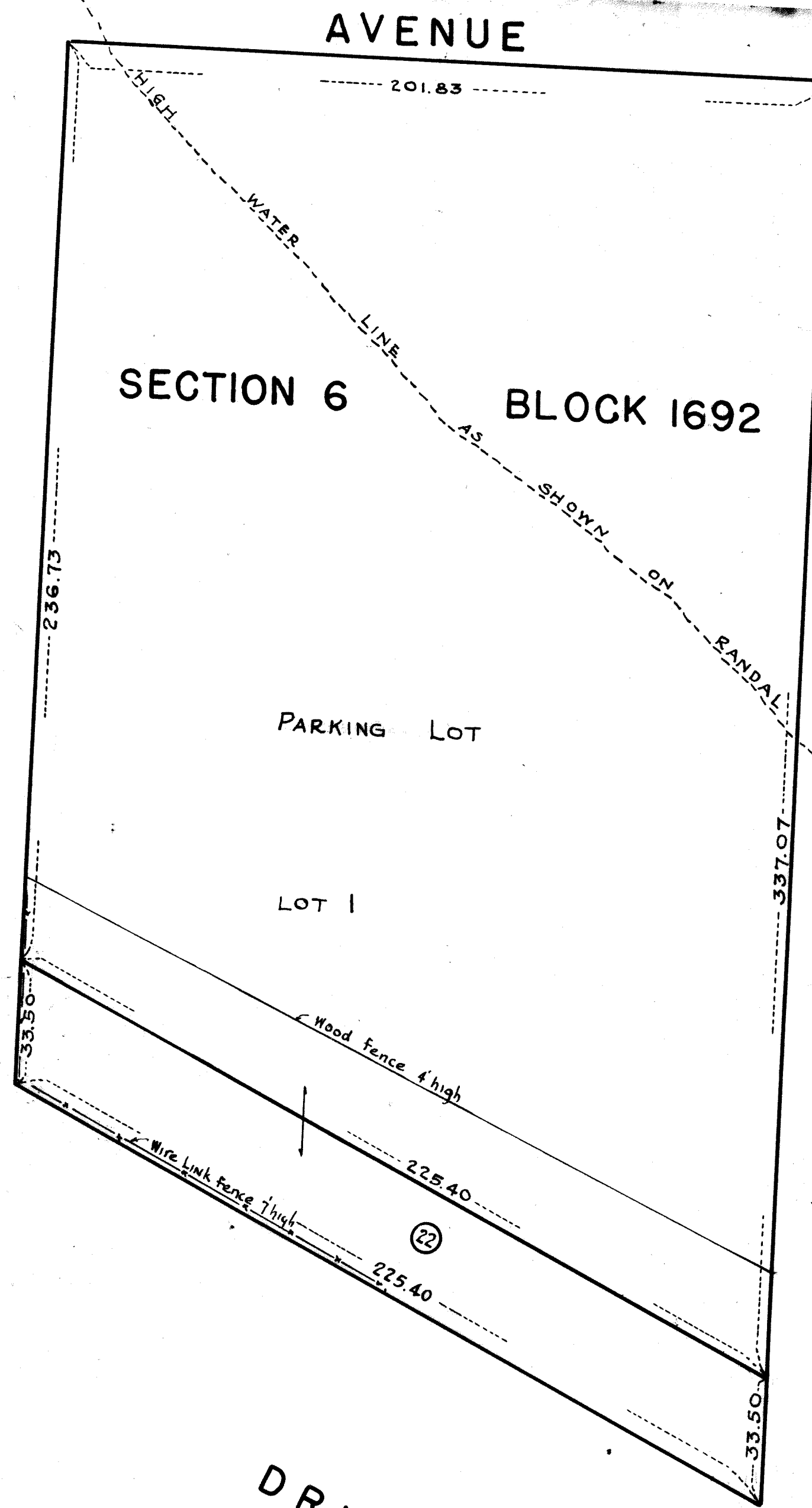
B



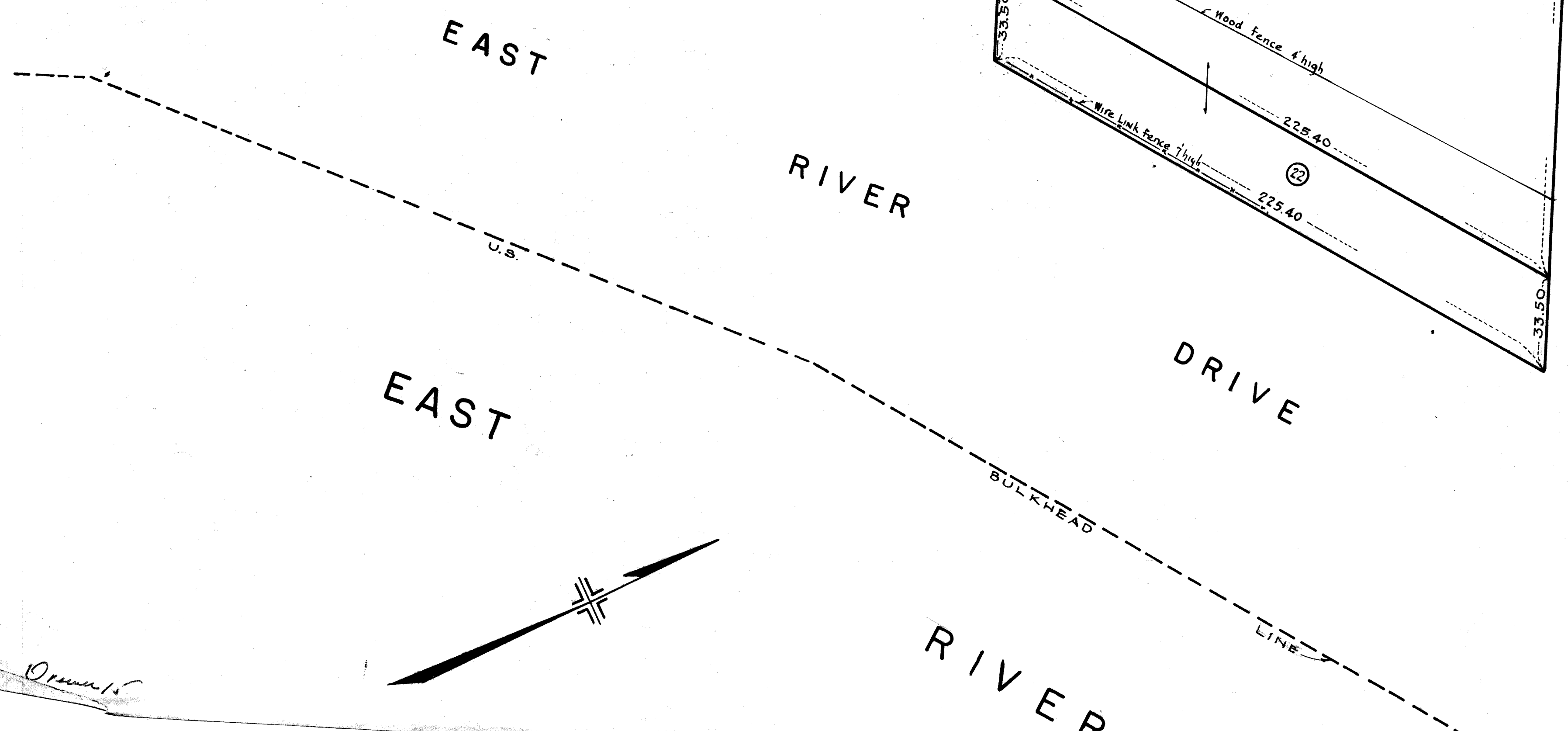
EAST 97 TH STREET



EAST 98 TH STREET



EAST 99 TH STREET



4

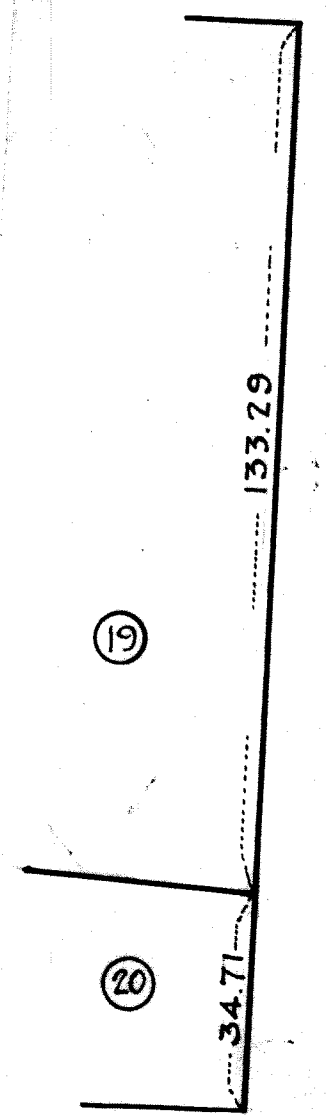
Orman

Sheet 6-4

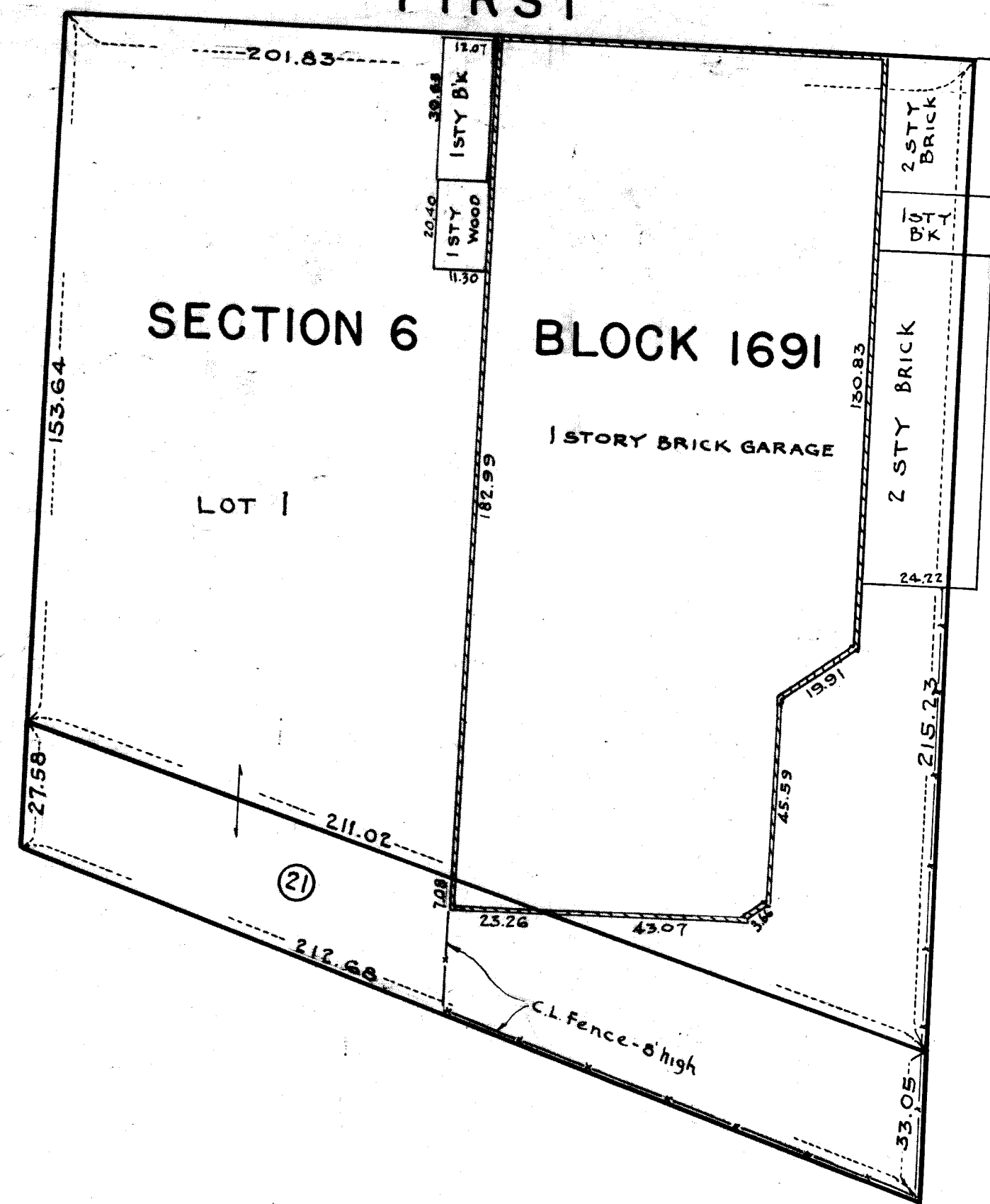
SCALE: 1"=30'

B

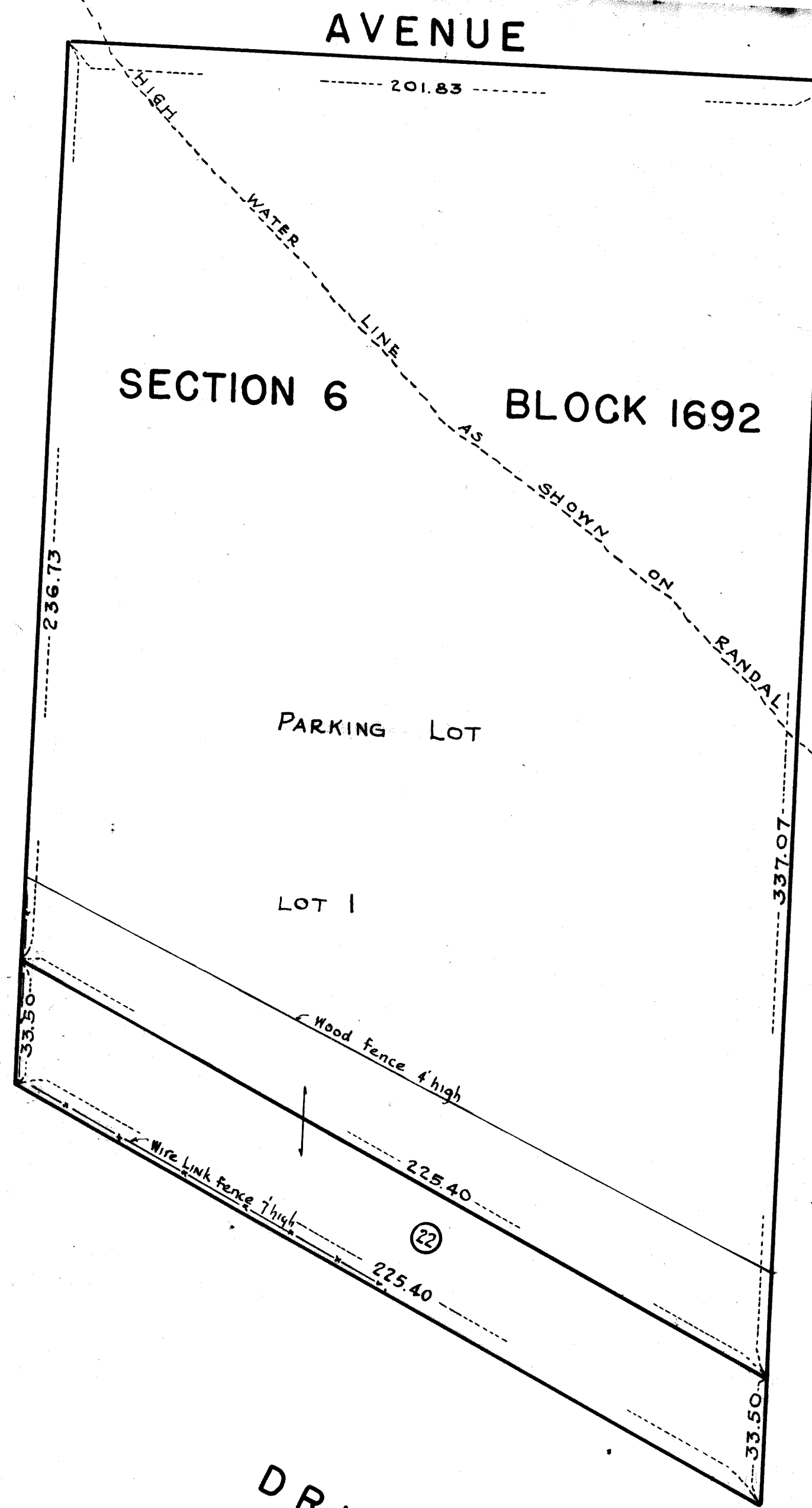
ACC. No. 28413



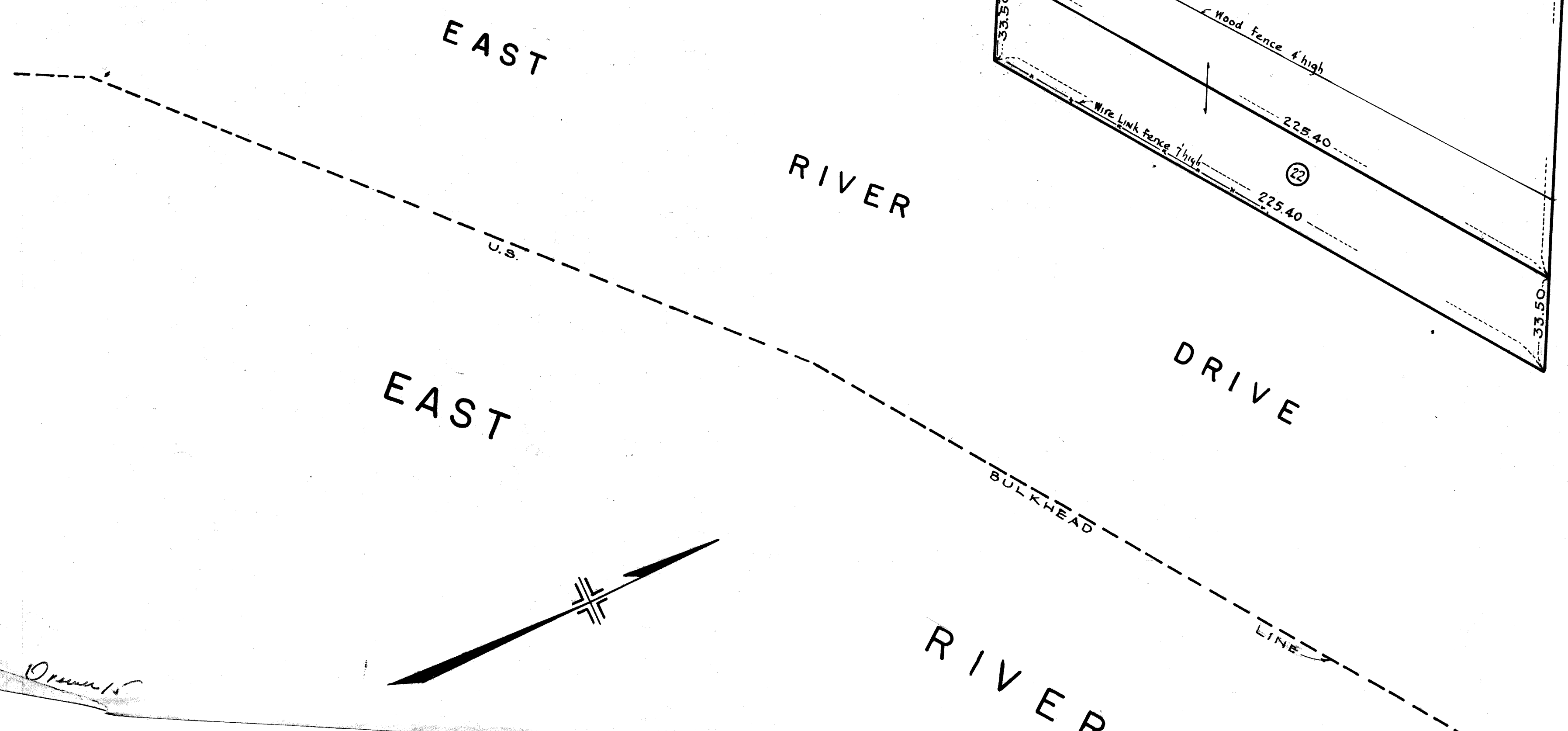
EAST 97 TH STREET



EAST 98 TH STREET



EAST 99 TH STREET



4

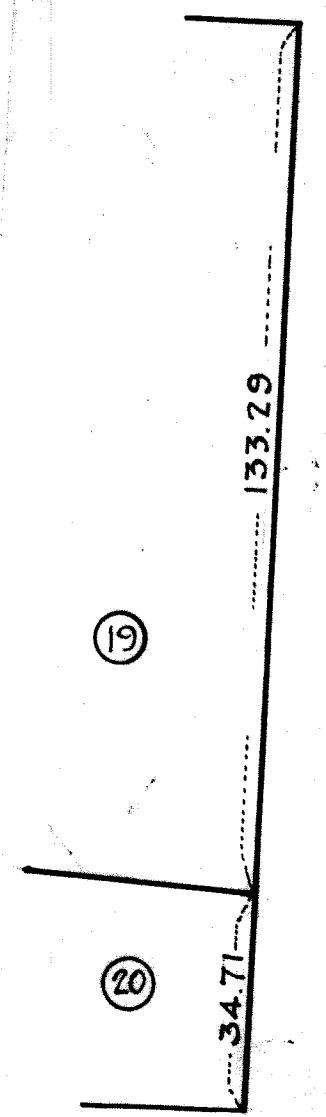
Orman 15

Sheet 6-4

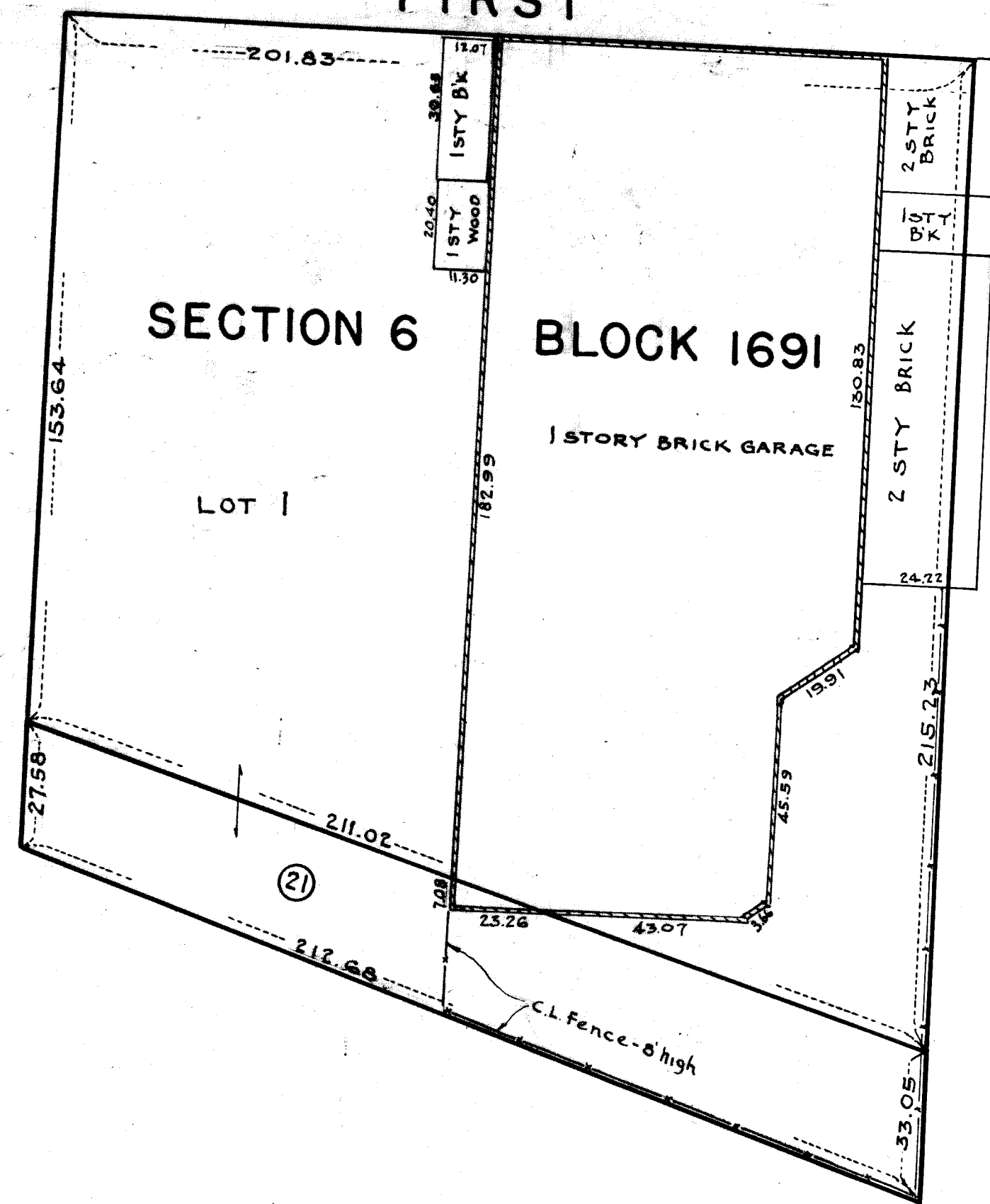
SCALE: 1"=30'

B

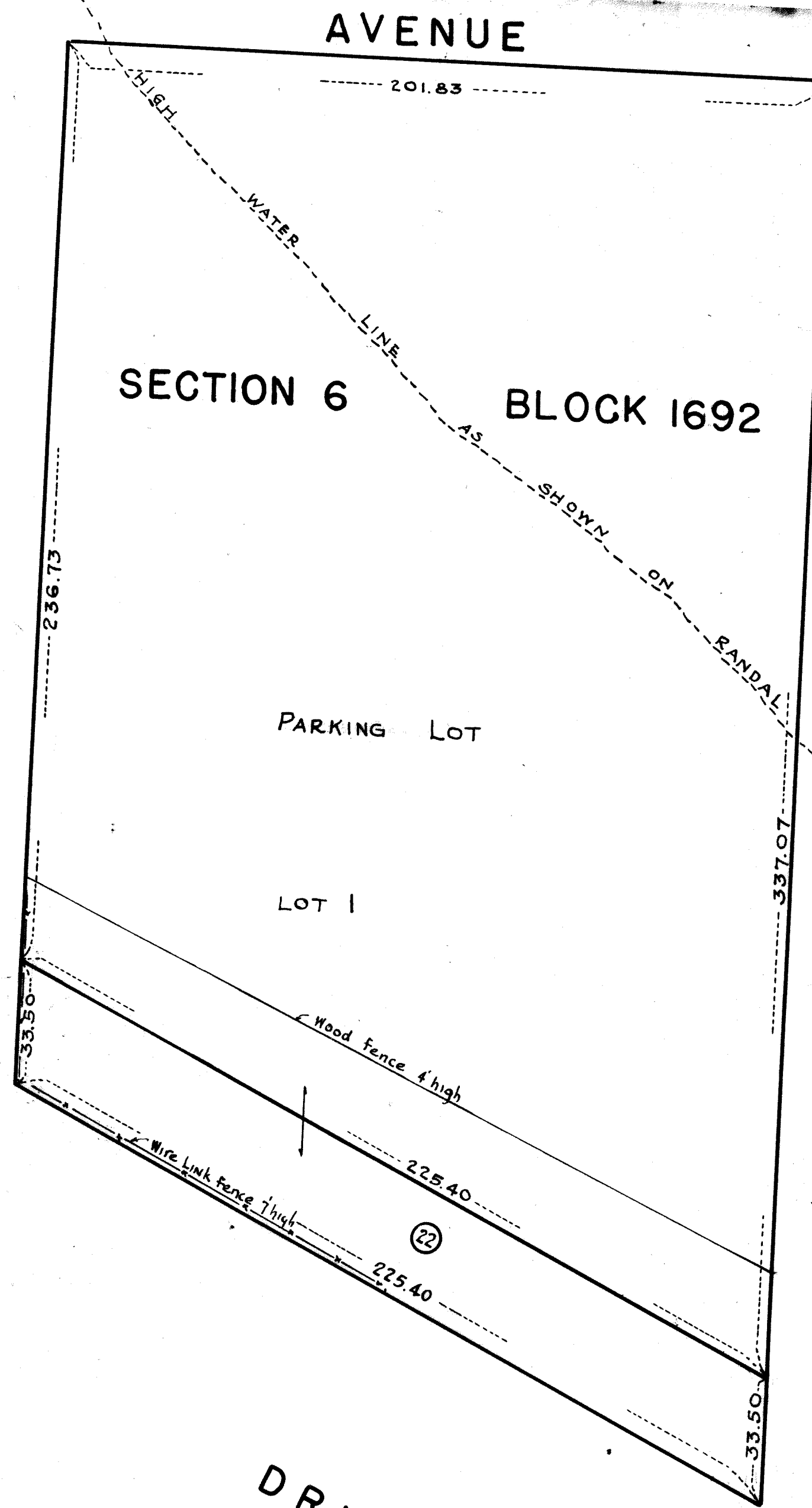
ACC. No. 28413



EAST 97 TH STREET



EAST 98 TH STREET



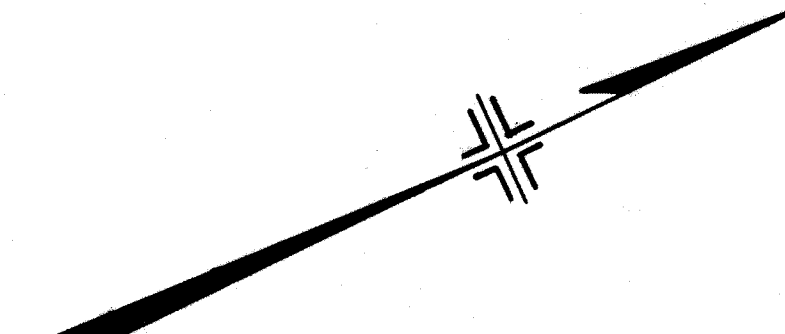
EAST 99 TH STREET

4

EAST RIVER DRIVE

U.S. BULKHEAD LINE

RIVER



Orman

Sheet 6-4

SCALE: 1"=30'
ACC. No. 28413

B