

LEXINGTON AVE.

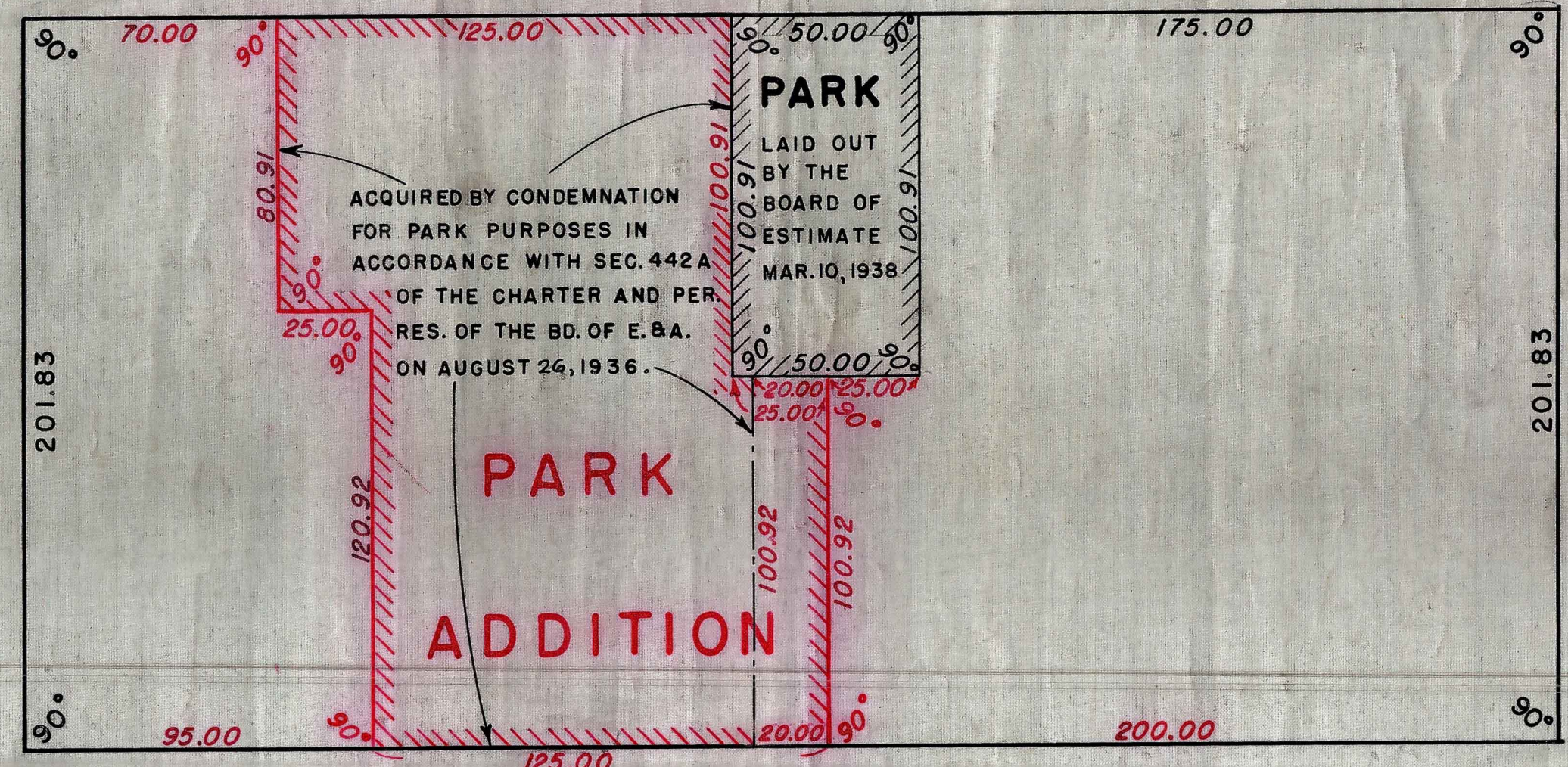
EAST 106<sup>TH</sup> STREET.

STREET.

THIRD AVE.

EAST 105<sup>TH</sup> STREET.

STREET.



**NOTES**

LINES AND DIMENSION PREVIOUSLY LAID OUT AND HEREBY RETAINED ARE SHOWN BY FULL BLACK LINES AND BLACK FIGURES.

LINES AND DIMENSIONS HEREBY ESTABLISHED ARE SHOWN BY FULL RED LINES AND RED FIGURES

PARK ADDITION HEREBY ESTABLISHED IS SHOWN THUS:



I, ANNA H. CLARK, SECRETARY OF THE BOARD OF ESTIMATE OF THE CITY OF NEW YORK DO HEREBY CERTIFY THAT THIS MAP IS ONE OF FOUR SIMILAR MAPS ADOPTED BY THE SAID BOARD OF ESTIMATE, ON THE 25<sup>th</sup> DAY OF JUNE, 1942.

*Anna H. Clark*  
 SECRETARY, BOARD OF ESTIMATE.  
 A.H.C.

SCALE 1" = 40'

CITY OF NEW YORK      BOROUGH OF MANHATTAN  
 OFFICE OF THE PRESIDENT  
 DEPARTMENT OF BOROUGH WORKS  
 MAP SHOWING A CHANGE IN THE STREET SYSTEM  
 BY LAYING OUT A

**PUBLIC PARK**

WITHIN THE AREA BOUNDED BY  
 EAST 106 TH. STREET, THIRD AVENUE, EAST 105 TH.  
 STREET, AND LEXINGTON AVENUE.

JANUARY 29, 1942

*Sequoia Wadsworth*  
 PRESIDENT BOROUGH OF MANHATTAN.

*W. C. Cummings*  
 CHIEF ENGINEER

*W. C. Cummings*  
 COMMISSIONER OF BOROUGH WORKS

*W. C. Cummings*  
 COMMISSIONER OF PARKS

(26x35)  
 G