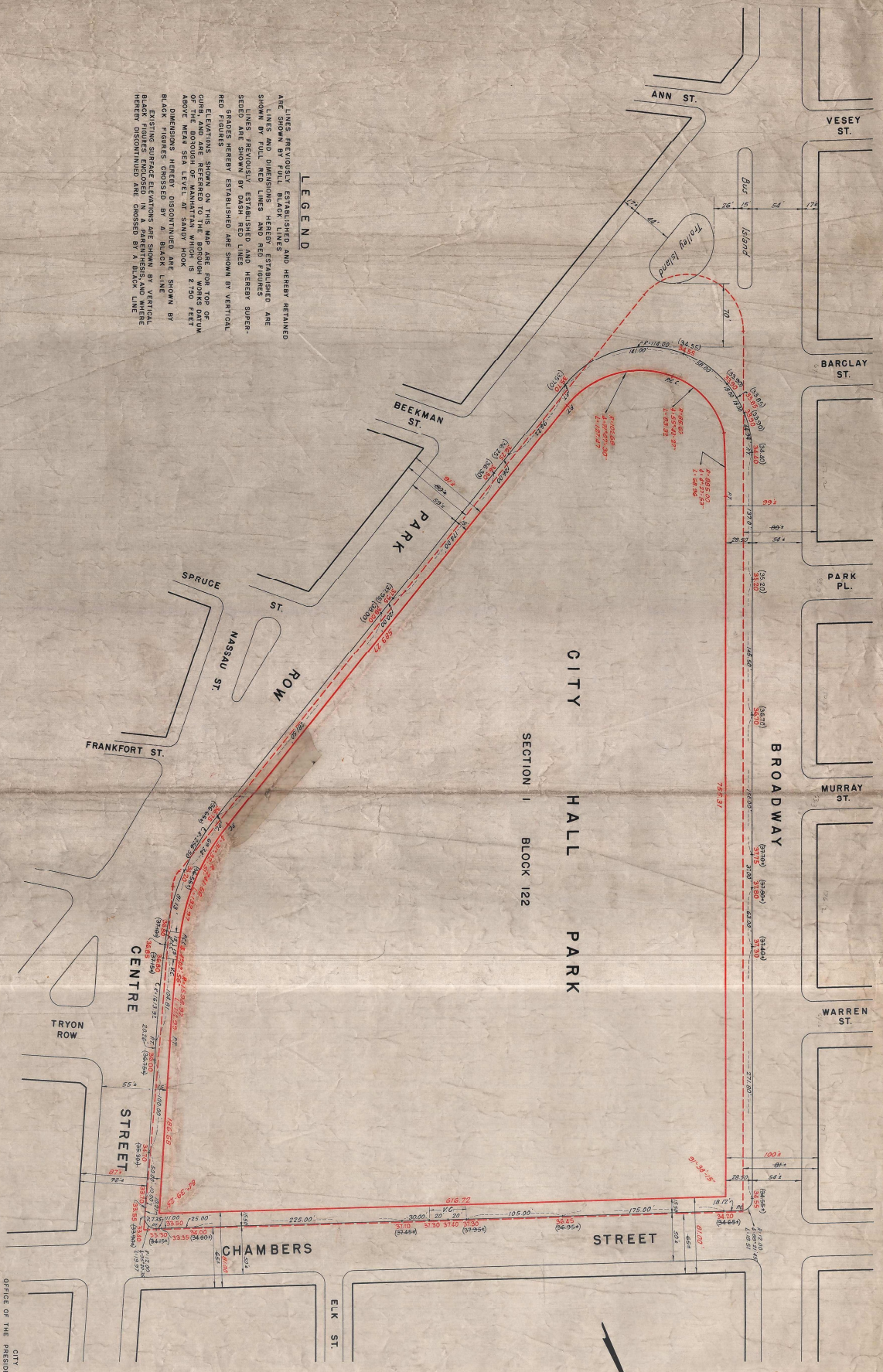


DRAWN BY *Charles H. Smith*
CHECKED BY *William H. Smith*
ENGINEER DESIGN
1941

APPROVED FOR DEPARTMENT OF PARKS
COMMISSIONER OF PARKS
1941

LEGEND
LINES PREVIOUSLY ESTABLISHED AND HEREBY RETAINED ARE SHOWN BY FULL BLACK LINES
LINES AND DIMENSIONS HEREBY ESTABLISHED ARE SHOWN BY RED LINES
LINES PREVIOUSLY ESTABLISHED AND HEREBY SUPERSEDED ARE SHOWN BY DASH RED LINES
GRADES HEREBY ESTABLISHED ARE SHOWN BY VERTICAL RED FIGURES
EXISTING GRADES ARE SHOWN BY VERTICAL BLACK FIGURES
EXISTING SURFACE ELEVATIONS ARE SHOWN BY VERTICAL BLACK FIGURES ENCLOSED IN A PARENTHESIS AND WHERE NECESSARY INDICATED BY A BLACK LINE



CITY OF NEW YORK
BUREAU OF MANHATTAN
DEPARTMENT OF PARKS
WORKS
MAP SHOWING A CHANGE IN THE CITY MAP
BY WIDENING
CHAMBERS STREET
ALONG THE SOUTHERLY SIDE BETWEEN BROADWAY AND CENTRE STREET
AND WIDENING
CENTRE STREET
ALONG THE WESTERLY SIDE BETWEEN CHAMBERS STREET AND PARK ROW
BY CHANGING THE LINES OF
CITY HALL PARK
AND ESTABLISHING CURB GRADES AROUND THE PARK
DATED APRIL 15, 1941

APPROVED FOR DEPARTMENT OF PARKS
COMMISSIONER OF PARKS
1941