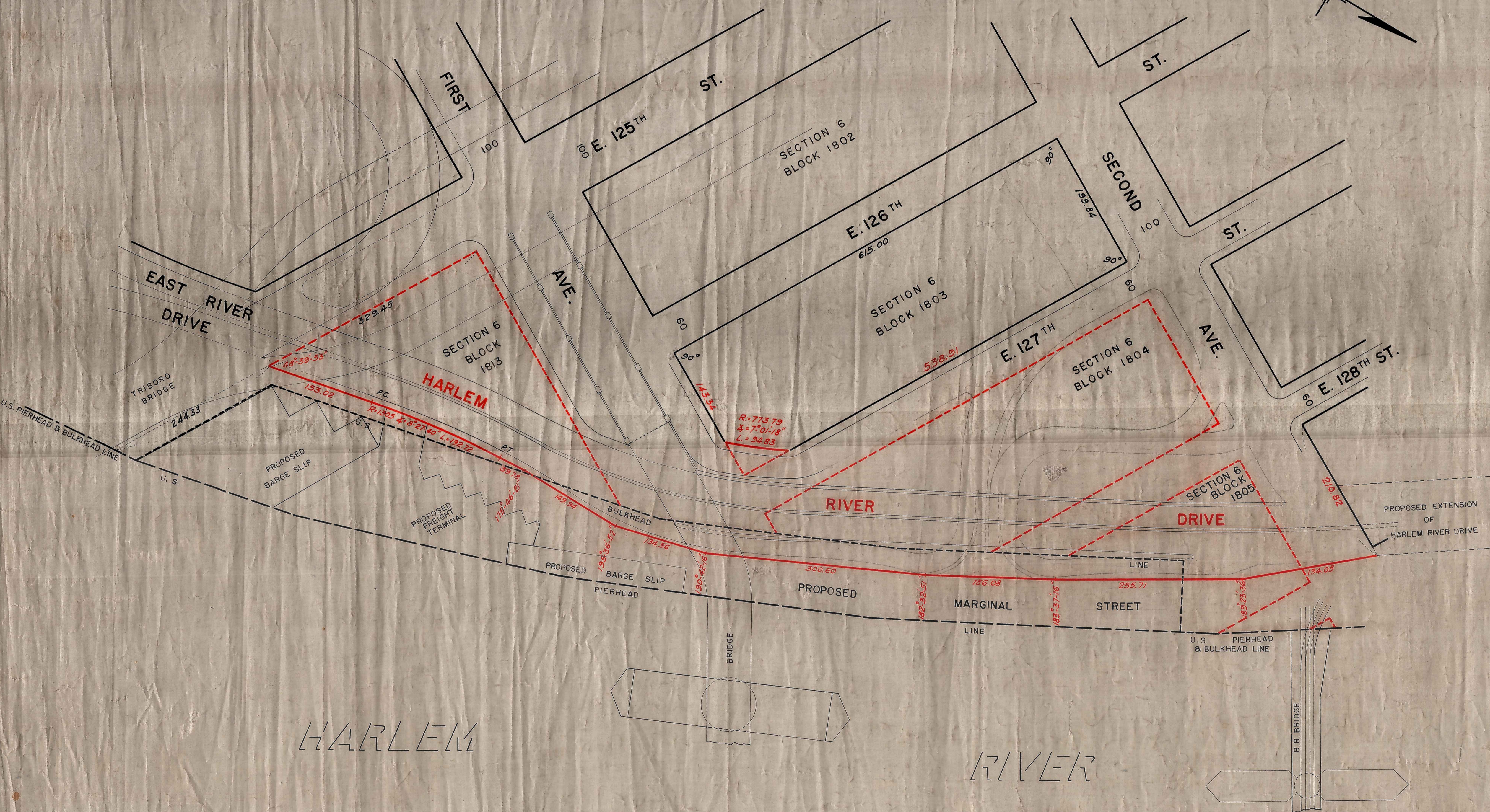
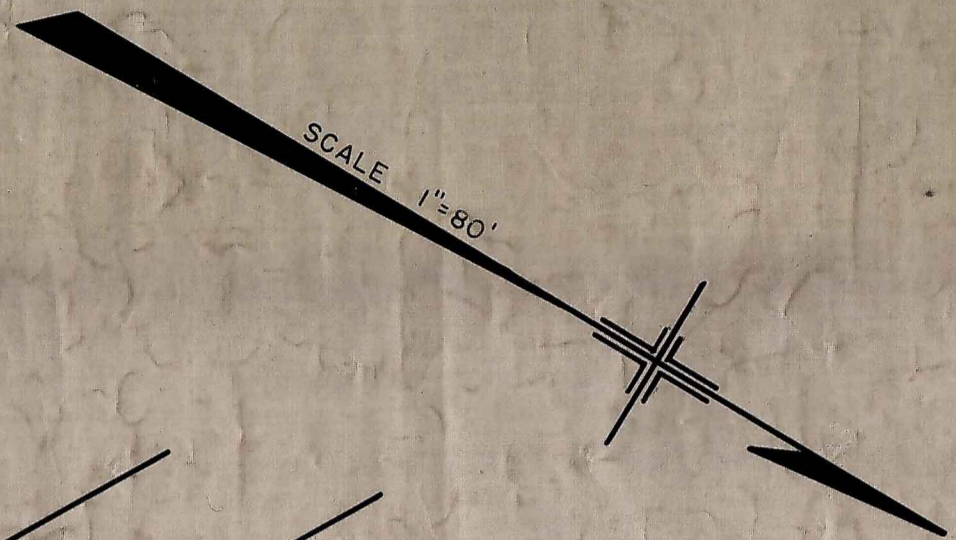


1941-1942
 1943-1944
 1945-1946
 1947-1948
 1949-1950
 1951-1952
 1953-1954
 1955-1956
 1957-1958
 1959-1960
 1961-1962
 1963-1964
 1965-1966
 1967-1968
 1969-1970
 1971-1972
 1973-1974
 1975-1976
 1977-1978
 1979-1980
 1981-1982
 1983-1984
 1985-1986
 1987-1988
 1989-1990
 1991-1992
 1993-1994
 1995-1996
 1997-1998
 1999-2000
 2001-2002
 2003-2004
 2005-2006
 2007-2008
 2009-2010
 2011-2012
 2013-2014
 2015-2016
 2017-2018
 2019-2020
 2021-2022
 2023-2024
 2025-2026
 2027-2028
 2029-2030
 2031-2032
 2033-2034
 2035-2036
 2037-2038
 2039-2040
 2041-2042
 2043-2044
 2045-2046
 2047-2048
 2049-2050
 2051-2052
 2053-2054
 2055-2056
 2057-2058
 2059-2060
 2061-2062
 2063-2064
 2065-2066
 2067-2068
 2069-2070
 2071-2072
 2073-2074
 2075-2076
 2077-2078
 2079-2080
 2081-2082
 2083-2084
 2085-2086
 2087-2088
 2089-2090
 2091-2092
 2093-2094
 2095-2096
 2097-2098
 2099-2100

LEGEND

LINES AND DIMENSIONS PREVIOUSLY ESTABLISHED AND HEREBY RETAINED
 ARE SHOWN BY FULL BLACK LINES AND BLACK FIGURES.
 LINES AND DIMENSIONS HEREBY ESTABLISHED ARE SHOWN BY FULL RED
 LINES AND RED FIGURES.
 LINES HEREBY DISCONTINUED ARE SHOWN BY DASHED RED LINES.



I, FRANCES LEHRICH, SECRETARY OF THE BOARD OF ESTIMATE
 OF THE CITY OF NEW YORK DO HEREBY CERTIFY THAT THIS
 MAP IS ONE OF FOUR SIMILAR MAPS ADOPTED BY THE SAID
 BOARD OF ESTIMATE ON THE 6TH DAY OF MARCH 1941
 Frances Lehrich
 SECRETARY, BOARD OF ESTIMATE

afg

HARLEM

RIVER

CITY OF NEW YORK BOROUGH OF MANHATTAN
 OFFICE OF THE PRESIDENT
 DEPARTMENT OF BOROUGH WORKS

MAP SHOWING A CHANGE IN THE STREET SYSTEM
 BY LAYING OUT
 A STREET DESIGNATED AS
HARLEM RIVER DRIVE
 ALONG THE HARLEM RIVER
 BETWEEN
 EAST 125TH STREET
 AND
 SECOND AVENUE

DRAWN BY BAP
 CHECKED BY EMT
 SECTION ENGINEER
 ENGINEER OF DESIGN

APPROVED FOR DEPT. OF DOCKS
 Commissioner of Docks

DATE: MARCH 4, 1940
 Chief Engineer

PRES. BORO. OF MANHATTAN

SCALE: 1"=80'

COMM. OF BORO. WORKS

Drawer 38-C

ACC: 28132