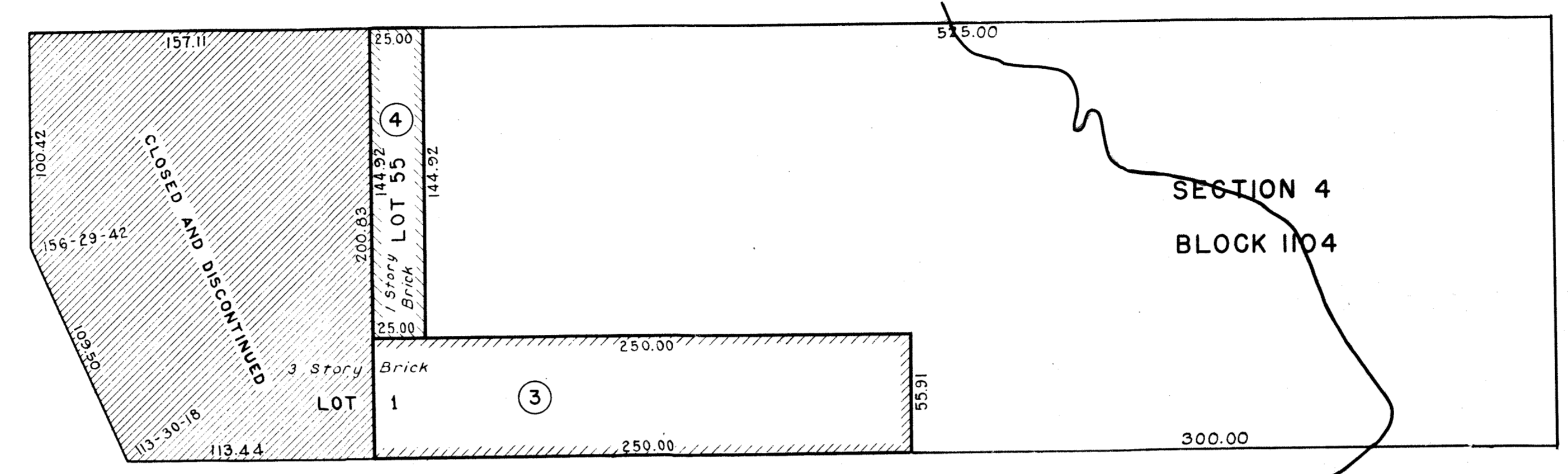


U.S. BULKHEAD LINE ESTABLISHED BY SECRETARY OF WAR APRIL 25, 1890

MARGINAL STREET  
TWELFTH WHARF OR PLACE

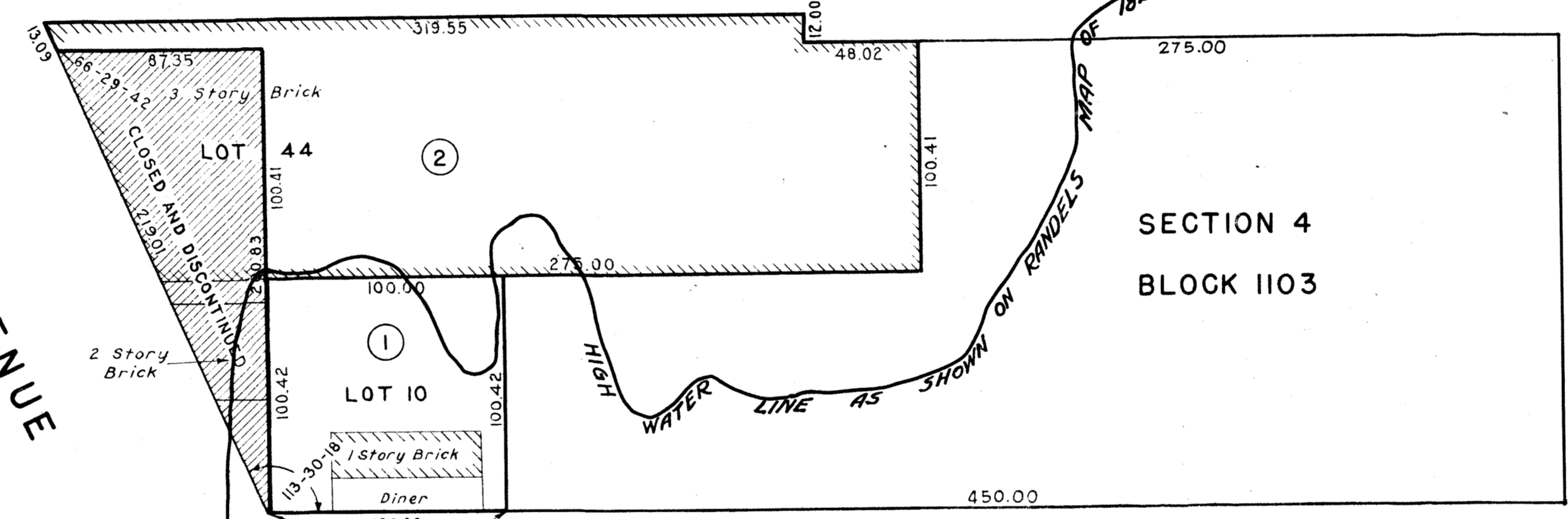
WEST 57TH STREET

AVENUE

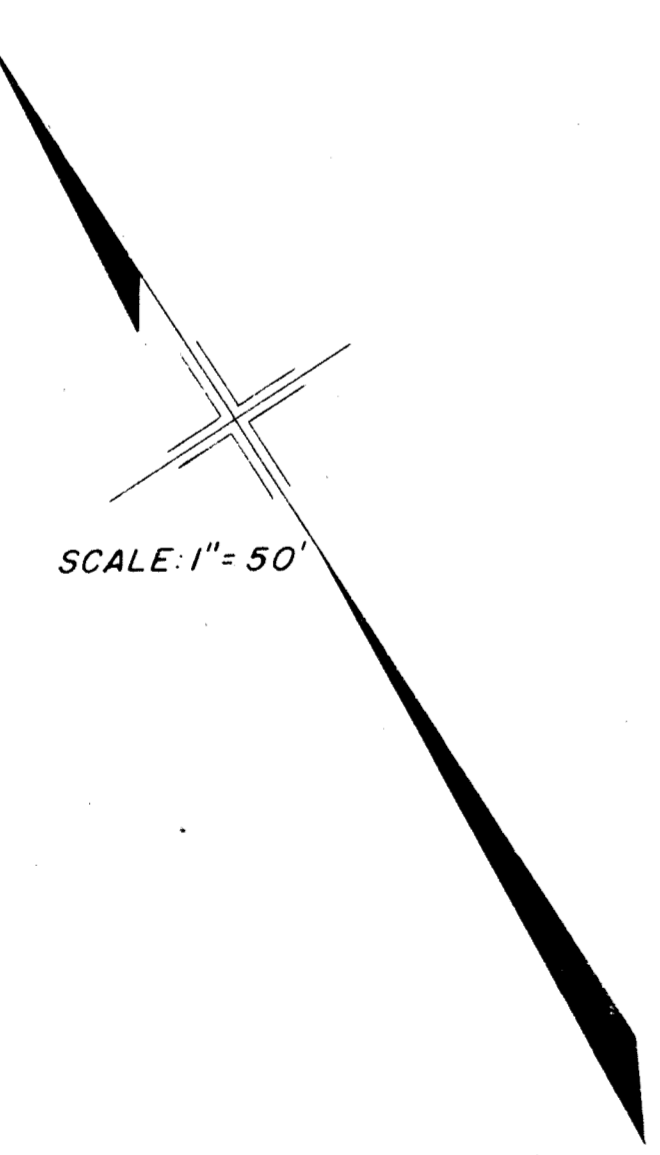


WEST 56TH STREET

ELEVENTH AVENUE



WEST 55TH STREET



DAMAGE PARCELS ARE SHOWN THUS ①

PARCEL	BLOCK	LOT	AREA	REMARKS
1	1103	10	10,042.0	
2	1103	44	31,416.0	
3	1104	1	13,977.5	
4	1104	55	3,623.0	

DRAWN BY: L.M. Atkinson  
CHECKED BY: J.L.

William D. Smith  
ACTING SECTION ENGINEER

W.C. Collier  
ENGINEER OF DESIGN

CITY OF NEW YORK  
OFFICE OF THE PRESIDENT  
DEPARTMENT OF BOROUGH WORKS  
**DAMAGE MAP**  
IN THE MATTER OF  
CLOSING AND DISCONTINUING PORTIONS OF  
**12TH AVENUE**  
BETWEEN  
**WEST 55TH STREET AND WEST 57TH STREET**  
PURSUANT TO CHAPTER 15 TITLE "E" OF  
THE ADMINISTRATIVE CODE FOR THE CITY OF NEW YORK

DATED: MAY 27, 1941 SCALE: 1" = 50'

President Borough of Manhattan

Chief Engineer

Commissioner of Borough Works

DRAWN 23

ACC. No. 24120