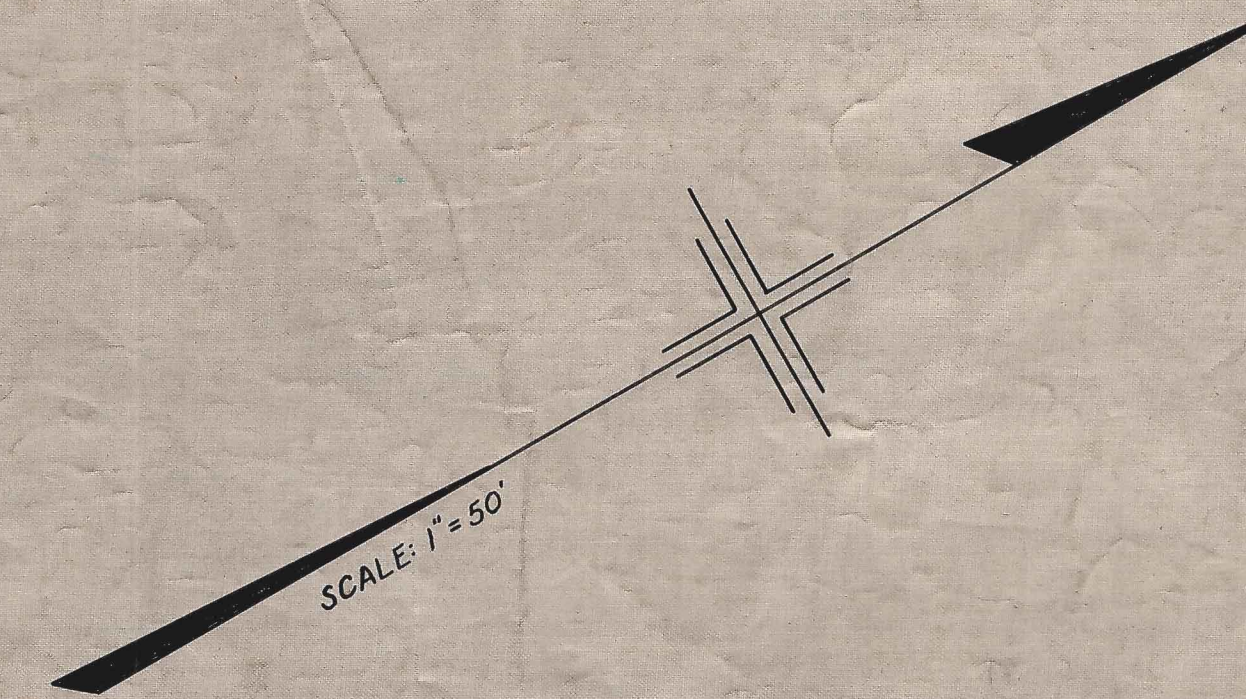
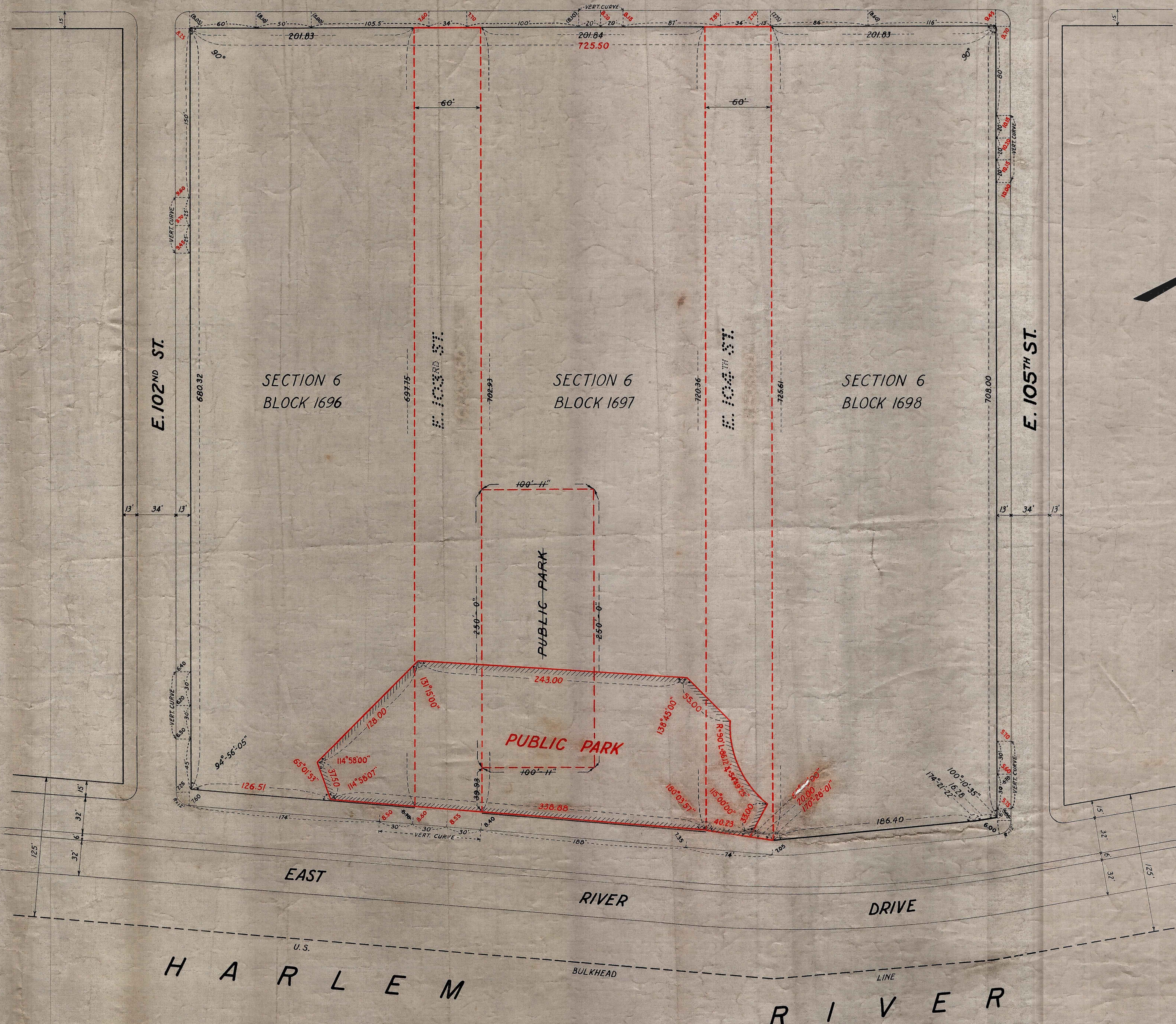


FIRST AVE.



LEGEND

of STREET

LINES AND DIMENSIONS PREVIOUSLY ESTABLISHED AND HEREBY RETAINED ARE SHOWN BY FULL BLACK LINES AND BLACK FIGURES.

LINES AND DIMENSIONS HEREBY ESTABLISHED ARE SHOWN BY FULL RED LINES AND RED FIGURES.

LINES PREVIOUSLY ESTABLISHED AND HEREBY SUPERSEDED ARE SHOWN BY DASH RED LINES.

DIMENSIONS HEREBY DISCONTINUED ARE SHOWN BY BLACK FIGURES CROSSED BY A BLACK LINE.

BOUNDARY OF PUBLIC PARK HEREBY LAID OUT IS SHOWN THUS

GRADES HEREBY ESTABLISHED ARE SHOWN BY VERTICAL RED FIGURES.

GRADES PREVIOUSLY ESTABLISHED AND HEREBY RETAINED ARE SHOWN BY VERTICAL BLACK FIGURES.

GRADES PREVIOUSLY ESTABLISHED AND HEREBY ABOLISHED ARE SHOWN BY VERTICAL BLACK FIGURES CROSSED BY A BLACK LINE.

EXISTING SURFACE GRADES ARE SHOWN BY VERTICAL BLACK FIGURES ENCLOSED IN PARENTHESES.

ELEVATIONS SHOWN ON THIS MAP ARE REFERRED TO THE BOROUGH WORKS DATUM OF THE BOROUGH OF MANHATTAN, WHICH IS 2.75 FEET ABOVE MEAN SEA LEVEL AT SANDY HOOK.

CITY OF NEW YORK
 OFFICE OF THE PRESIDENT BOROUGH OF MANHATTAN
 DEPARTMENT OF BOROUGH WORKS

MAP SHOWING A CHANGE IN THE STREET SYSTEM
 BY ELIMINATING FROM THE CITY MAP THE LINES OF
 EAST 103RD STREET AND EAST 104TH STREET
 BETWEEN FIRST AVENUE AND EAST RIVER DRIVE
 BY LAYING OUT
 A PUBLIC PARK
 ADJACENT TO EAST RIVER DRIVE
 BETWEEN EAST 102ND STREET AND EAST 104TH STREET
 AND ESTABLISHING
 CURB GRADES AROUND THE AREA AFFECTED

DATED: MARCH 1, 1940 SCALE: 1" = 50'

Stuyvesant
 PRESIDENT, BOROUGH OF MANHATTAN

F. Stearns
 CHIEF ENGINEER

W. S. ...
 COMMISSIONER OF BOROUGH WORKS

I, FRANCES LEHRICH, SECRETARY OF THE BOARD OF ESTIMATE OF THE CITY OF NEW YORK DO HEREBY CERTIFY THAT THIS MAP IS ONE OF FOUR SIMILAR MAPS ADOPTED BY THE SAID BOARD OF ESTIMATE ON THE 12TH DAY OF SEPT. 1940.

DATED: NEW YORK, October 13, 1940.

Frances Lehrich
 SECRETARY, BOARD OF ESTIMATE

APPROVED FOR DEPT. OF PARKS
[Signature]
 COMMISSIONER OF PARKS

DRAWN BY RTG.
 CHECKED BY JLS
[Signature]
 SECTION ENGINEER
[Signature]
 ENGINEER OF DESIGN

Draw 34

FILE No. 85-2

ACC. No. 28047