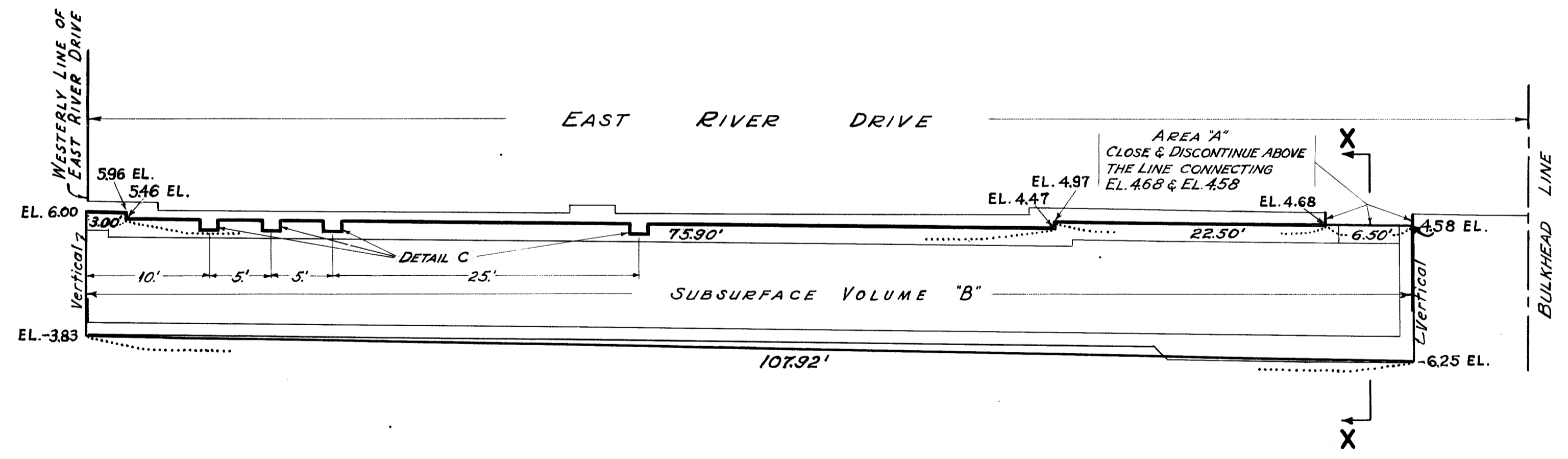
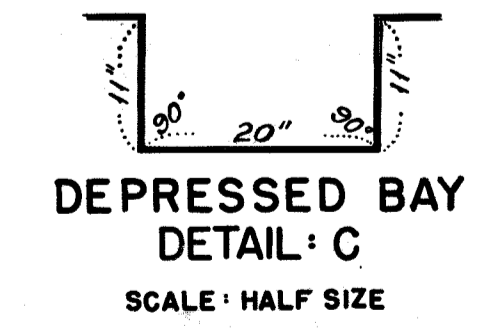


**PLAN**  
SCALE: 1" = 8'



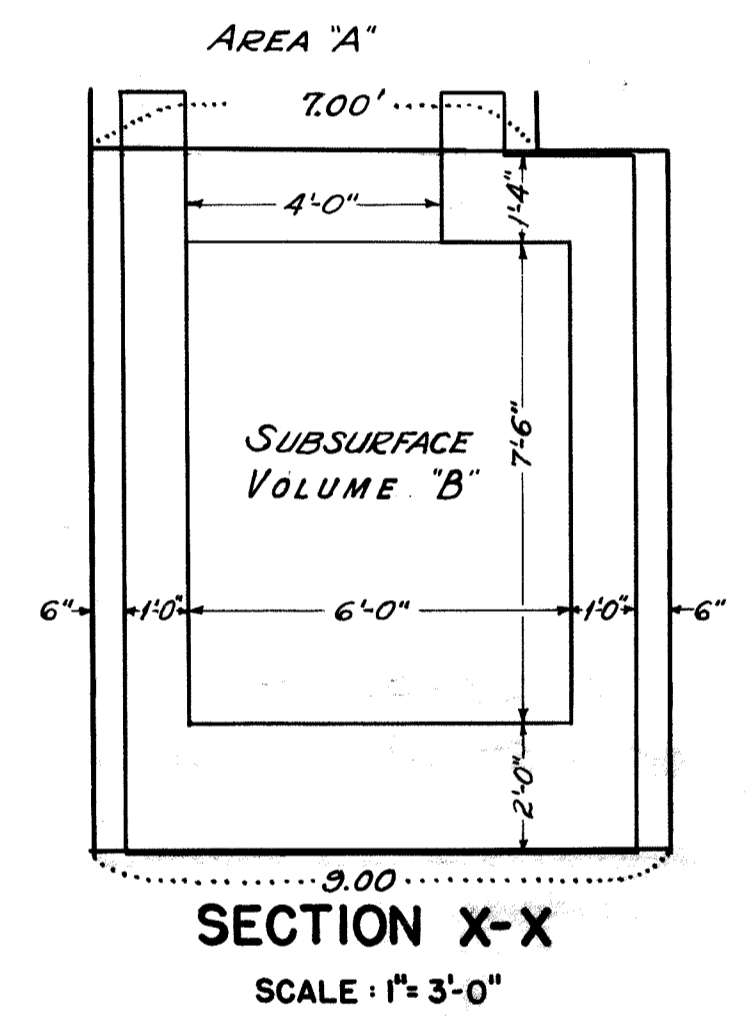
**CENTER LINE ELEVATION**  
SCALE: 1" = 8'



**DEPRESSED BAY  
DETAIL: C**  
SCALE: HALF SIZE

DRAWN BY J.R.R.  
CHECKED BY W.M.  
*J. C. Collins*  
SECTION ENGINEER  
*J. C. Collins*  
ENGINEER OF DESIGN

I, FRANCES LEHRICH, SECRETARY OF THE BOARD OF ESTIMATE OF THE CITY OF NEW YORK DO HEREBY CERTIFY THAT THIS MAP IS ONE OF FOUR SIMILAR MAPS ADOPTED BY THE SAID BOARD OF ESTIMATE ON THE 7<sup>th</sup> DAY OF March 1940  
DATED: NEW YORK, APR. 11 5 1940  
*Frances Lehigh* 476.  
SECRETARY, BOARD OF ESTIMATE



**SECTION X-X**  
SCALE: 1" = 3'-0"

CITY OF NEW YORK  
OFFICE OF THE PRESIDENT BOROUGH OF MANHATTAN  
DEPARTMENT OF BOROUGH WORKS  
**MAP SHOWING A CHANGE IN STREET SYSTEM BY  
CLOSING AND DISCONTINUING**  
PURSUANT TO TITLE "E" OF CHAPTER 15 OF THE  
ADMINISTRATIVE CODE OF THE CITY OF NEW YORK  
**A 6.5x7.0 RECTANGULAR AREA IN  
EAST RIVER DRIVE**  
AND  
**A SUBSURFACE VOLUME FOR A TUNNEL EASEMENT  
UNDER AND ACROSS  
EAST RIVER DRIVE**  
BETWEEN EAST 64<sup>TH</sup> STREET AND EAST 65<sup>TH</sup> STREET  
DATED: DEC. 7, 1939. SCALE: AS SHOWN

*Francis Lehigh*  
PRESIDENT, BOROUGH OF MANHATTAN  
*J. C. Collins*  
CHIEF ENGINEER  
*M. O. Bings*  
COMMISSIONER OF BOROUGH WORKS

Filed in the Office of the Recorder  
Borough of Manhattan 4/15/40  
ACC. No. 27970

Drawn 14