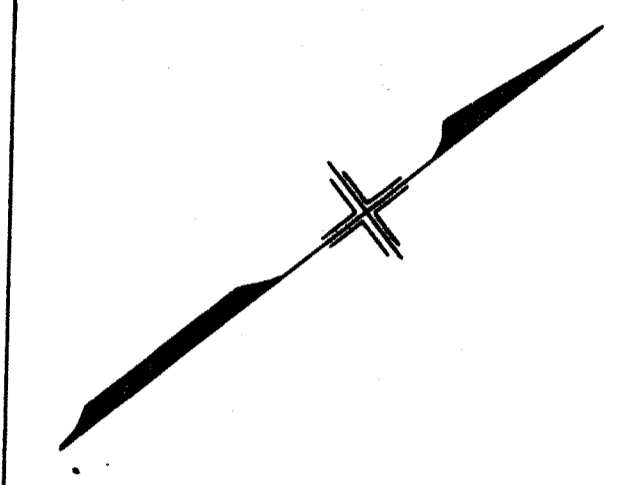


I, FRANCIS LEHUGH, SECRETARY OF THE BOARD OF ESTIMATE AND APPORTIONMENT OF THE CITY OF NEW YORK DO HEREBY CERTIFY THAT THIS MAP IS ONE OF THREE SIMILAR MAPS MADE AT THE DIRECTION OF AND ADOPTED BY THE SAID BOARD OF ESTIMATE AND APPORTIONMENT ON THE 28th DAY OF JULY 1938

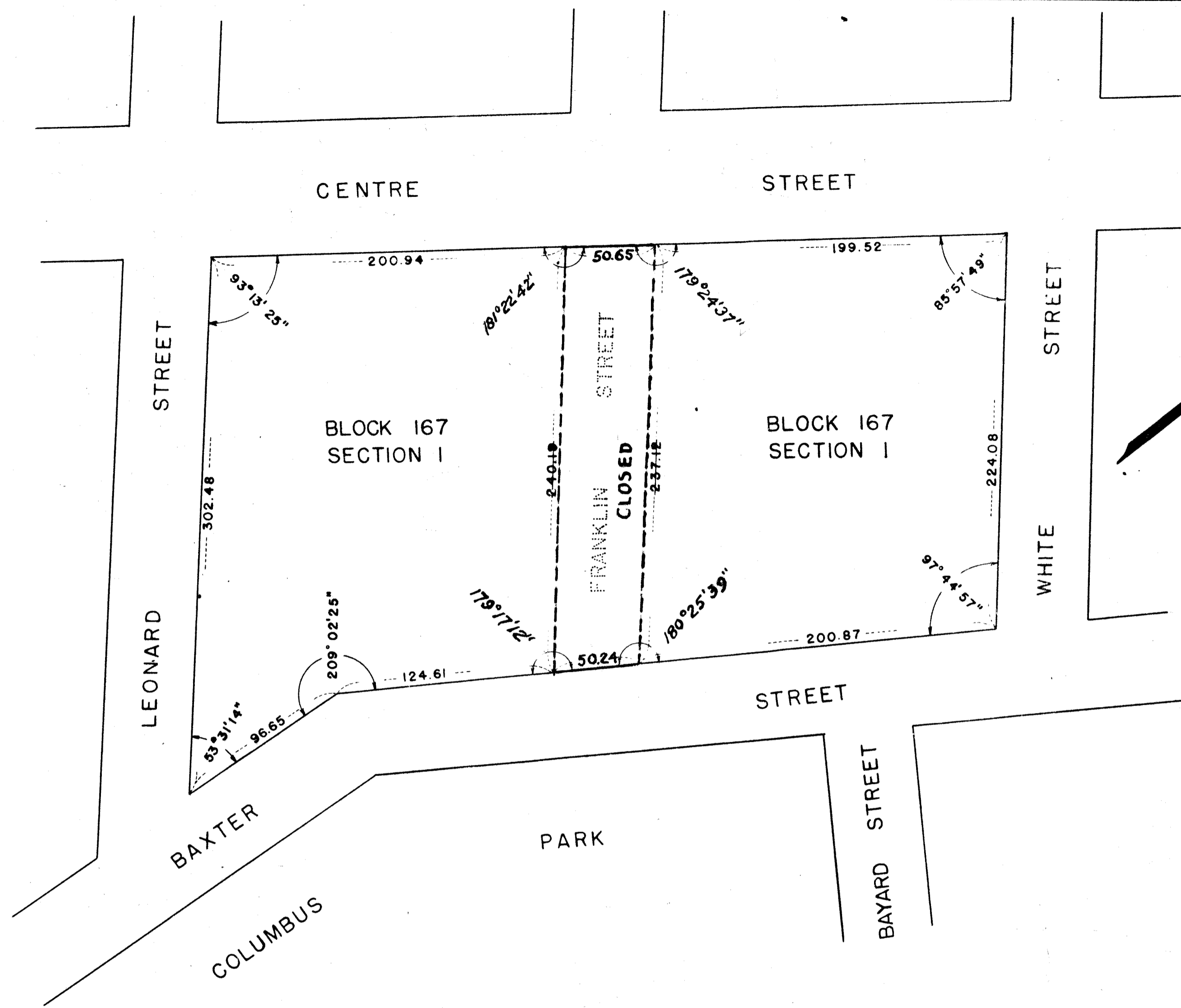
DATED: NEW YORK February 2, 1940

Francis Lehugh
 SECRETARY, BOARD OF ESTIMATE AND APPORTIONMENT
 474.



I, PEARL BERNSTEIN, SECRETARY OF THE BOARD OF ESTIMATE AND APPORTIONMENT OF THE CITY OF NEW YORK DO HEREBY CERTIFY THAT THIS MAP IS ONE OF THREE SIMILAR MAPS MADE AT THE DIRECTION OF AND ADOPTED BY THE SAID BOARD OF ESTIMATE AND APPORTIONMENT ON THE DAY OF _____ 19____ AND APPROVED BY THE MAYOR ON THE _____ DAY OF _____ 19____ SUPERSEDING ALL MAPS HERETOFORE FILED AFFECTING THE AREA EMBRACED BY SAID MAP IN SO FAR AS IT MAKES ANY CHANGES THEREIN.
 PREPARED FOR THE BOARD OF ESTIMATE AND APPORTIONMENT UNDER AUTHORITY OF THE CHARTER OF THE CITY OF NEW YORK.
 DATED NEW YORK _____ 19____

SECRETARY
 BOARD OF ESTIMATE AND APPORTIONMENT



LEGEND
 LINES AND DIMENSIONS PREVIOUSLY ESTABLISHED AND HEREBY RETAINED ARE SHOWN BY FULL BLACK LINES AND BLACK FIGURES.
 LINES AND DIMENSIONS HEREBY ESTABLISHED ARE SHOWN BY FULL RED LINES AND RED FIGURES.
 LINES PREVIOUSLY ESTABLISHED AND HEREBY SUPERSEDED ARE SHOWN BY DASH RED LINES.
 DIMENSIONS HEREBY DISCONTINUED ARE SHOWN BY BLACK FIGURES CROSSED BY A BLACK LINE.

DRAWN BY W.P.A.
 CHECKED BY M.G.
W.P.A.
 SECTION ENGINEER
M.G.
 ENGINEER OF DESIGN

Drawn 14

CITY OF NEW YORK BOROUGH OF MANHATTAN
 OFFICE OF THE PRESIDENT
 DEPARTMENT OF PUBLIC WORKS
 BUREAU OF SEWERS AND HIGHWAYS
MAP SHOWING A CHANGE IN THE STREET SYSTEM BY
CLOSING
FRANKLIN STREET
 BETWEEN
CENTRE STREET AND BAXTER STREET

DATED NOVEMBER 20, 1937

SCALE: 1" = 50' 0"

W.P.A.
 CHIEF ENGINEER

Samuel Levy
 PRESIDENT, BOROUGH OF MANHATTAN

Filed in the Office of the Borough President, Manhattan 2/13/40

FILE No. 56.2 Acc. No. 27945

B