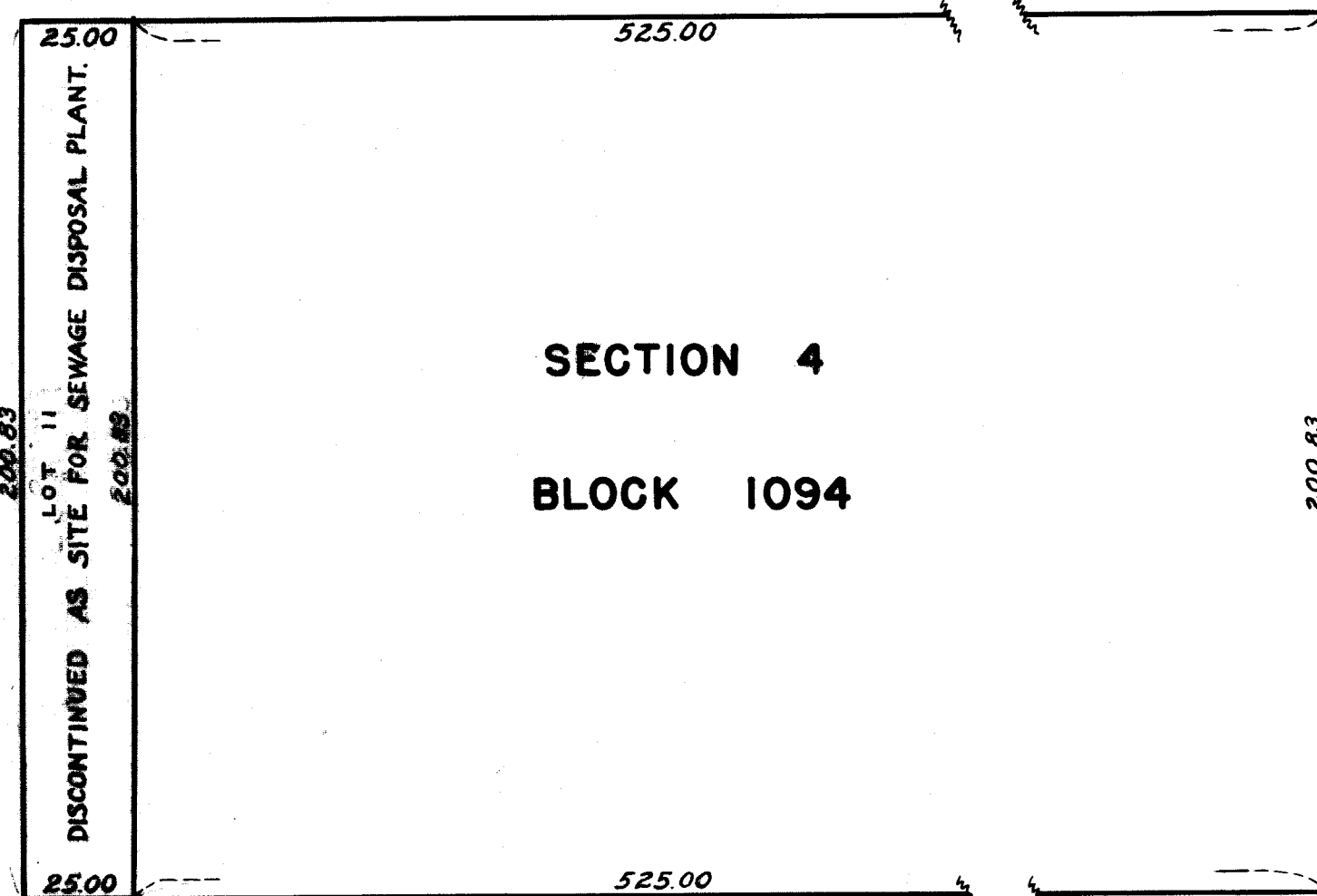


12TH AVENUE

W. 47TH ST.

11TH AVENUE



SECTION 4
BLOCK 1094

W. 46TH ST.

SCALE: 1" = 40'

I, FRANCES LEHRICH, SECRETARY OF THE BOARD OF ESTIMATE OF THE CITY OF NEW YORK, DO HEREBY CERTIFY THAT THIS MAP IS ONE OF FOUR SIMILAR MAPS ADOPTED BY THE SAID BOARD OF ESTIMATE ON THE 18TH DAY OF MAY, 1939.

DATED, NEW YORK February 2, 1940

Frances Lehrich
SECRETARY, BOARD OF ESTIMATE.
A.F.G.

CITY OF NEW YORK
OFFICE OF THE PRESIDENT, BOROUGH OF MANHATTAN
DEPARTMENT OF BOROUGH WORKS

MAP DISCONTINUING
THE SITE ACQUIRED FOR SEWER PURPOSES
ALONG THE EASTERLY SIDE OF
12TH AVENUE
BETWEEN
WEST 46TH ST. AND WEST 47TH ST.

DATED Feb. 3, 1939

Walter H. ...
PRESIDENT, BOROUGH OF MANHATTAN

J. J. ...
CHIEF ENGINEER

COMMISSIONER OF BOROUGH WORKS

DRAWN BY J. Whitman

CHECKED BY W. MOFFATT

A. ...
SECTION ENGINEER

J. ...
ENGINEER OF DESIGN

Drawn 1/4

FILE NO. 42.2 Acc. No. 27943